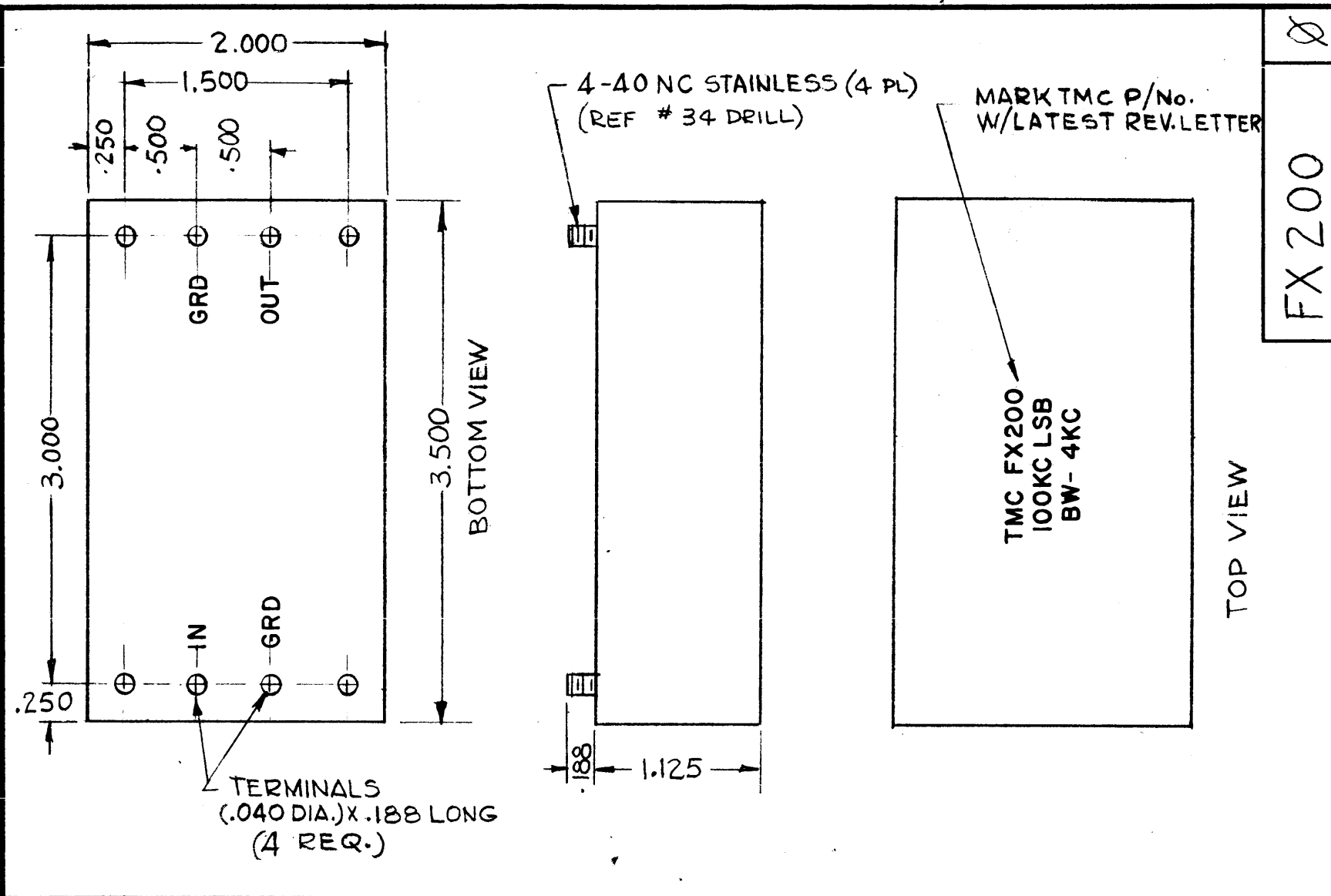


STANDARD DRAWING



REVISIONS					
SYM	DESCRIPTION	DATE	E.M.N. NO.	DRAFT	CHKD APPD
X	EXPER. RELEASE	12-23-64		G.D.L.	
Ø	ORIGINAL RELEASE FOR PRODUCTION	12-31-64	Ø	KB	

- ELECTRICAL SPECIFICATIONS**
- TYPE: BAND PASS, CRYSTAL
  - db MEASUREMENT ARE RELATIVE TO MAX. SIGNAL RESPONSE IN PASS BAND
  - CARRIER FREQUENCY: 100.000Kc
  - CARRIER SUPPRESSION: 20db MIN.
  - 3db POINTS: 96.000Kc MAX, 99.750Kc MIN.
  - 60db POINTS: 93.000Kc MIN., 100.250Kc MAX.
  - ALL RETURN LOBES AND SPURIOUS SHALL BE -60db OR GREATER OVER THE RANGE OF ±50Kc FROM CARRIER
  - MAXIMUM PASS BAND: RIPPLE: 2.5db MAX.
  - VOLTAGE LOSS OR GAIN: 0db ±2db
  - INPUT IMPEDANCE: 10K Ω ±5% RESISTIVE
  - OUTPUT IMPEDANCE: 1000Ω ±5% RESISTIVE

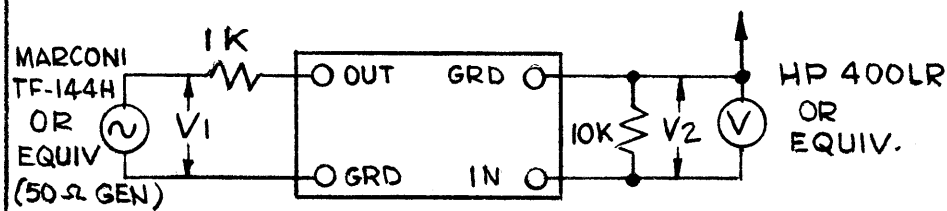
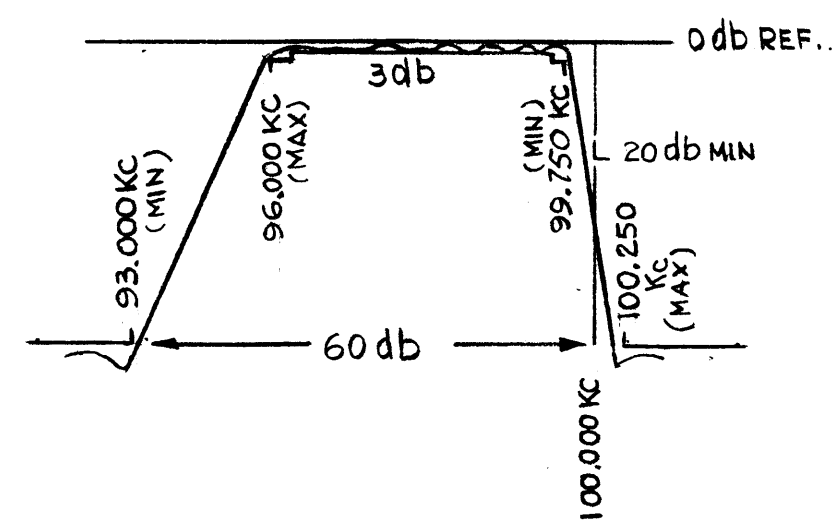
- ENVIRONMENTAL SPECIFICATIONS**
- TEMPERATURE RANGE: 0° - 70°C

- MECHANICAL SPECIFICATIONS**
- HERMETICALLY SEALED
  - MARKING: 1/8" HIGH GOTHIC, BLACK
  - TERMINALS: PIN TYPE

- TEST CIRCUIT**
- TO MEASURE 60db, FILTER SOURCE AND LOAD IS REVERSED
  - VOLTAGE LOSS DEFINED AS:

$$I.L. = 20 \log_{10} \frac{V_1}{V_2} = 0db \pm 2db$$

AT POINT OF MINIMUM LOSS IN FILTER PASS BAND  
 NOTE: CAPACITY OF VTVM AND CONNECTING CABLES MUST BE TURNED OUT.  
 SEE S-764 FOR REFERENCE ONLY.



STANDARD DRAWING

REQ'D.	ITEM	PART NUMBER	DESCRIPTION	SYMBOL
Ø POSE LIST OF MATERIAL				
MATERIAL		BRASS		
FINISH		BRUSH BRIGHT NICKEL PLATE		
UNLESS OTHERWISE SPECIFIED DIMENSIONS ARE IN INCHES AND INCLUDE CHEMICALLY APPLIED OR PLATED FINISHES		THE TECHNICAL MATERIEL CORP. MAMARONECK, NEW YORK		
TITLE		FILTER BAND PASS 4KC BW 100KC LSB		
DRAWN	G.D.L.	DATE	12-23-64	FINAL APPROVAL
CHECKED	Ø	DATE	12-31-64	5/18/65
ELECT. DES.		DATE		FX 200
MECH. DES.		DATE	1-4-65	Ø
SHEET				REV. LTR.

NOTES

THE CONTENTS OF THIS DRAWING ARE THE EXCLUSIVE PROPERTY OF THE TECHNICAL MATERIEL CORP. ITS UNAUTHORIZED USE OR REPRODUCTION IN WHOLE OR IN PART IS STRICTLY FORBIDDEN.

QTY./UNIT	MODEL USED ON	ASSY. NO.
SCALE	CODE	
1:1		

DECIMALS	FRACTIONS
.X ± .05	± 1/64
.XX ± .01	ANGLES ± 0° 30'
.XXX ± .005	

STANDARD DRAWING