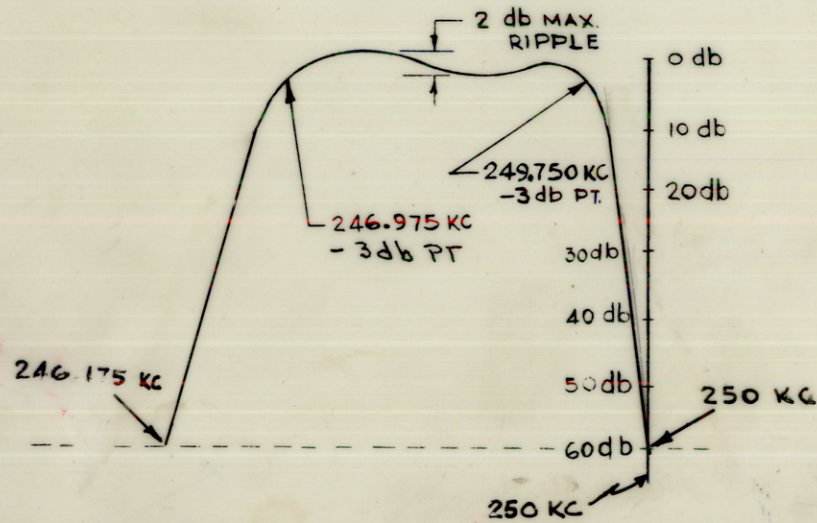
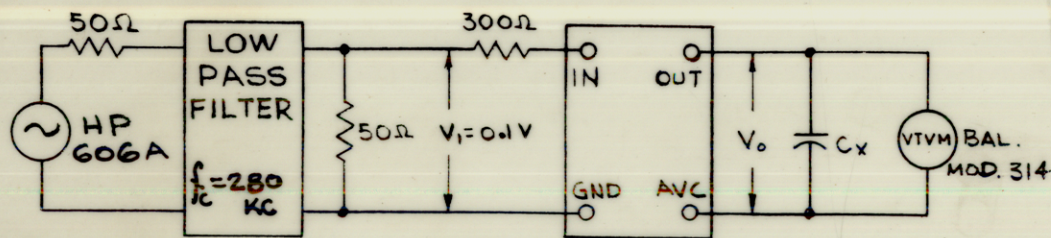


ELECTRICAL SPECIFICATIONS

1. TYPE: INNER LOWER SIDEBAND
2. db MEASUREMENTS: ALL db MEASUREMENTS ARE RELATIVE TO MAXIMUM SIGNAL RESPONSE IN PASSBAND.
3. CARRIER FREQUENCY: 250 KC.
4. CARRIER SUPPRESSION: GREATER THAN 60 db
5. -3 db POINTS: 249.750 KC OR GREATER, 246.975 KC OR LESS
6. -60 db POINTS: 246.175 KC OR GREATER, 250.0 KC OR LESS ALL RETURN LOBES AND SPURIOUS SHALL BE -60 db OR GREATER, OVER THE RANGE OF ± 50 KC FROM CARRIER FREQ.
7. MAXIMUM PASSBAND RIPPLE: 2 db
8. INSERTION (LOSS OR GAIN): $+3$ db ± 1 db
9. INPUT IMPEDANCE: 300 OHMS (NOMINAL).
10. OUTPUT IMPEDANCE: NOT TO EXCEED 50 K OHMS (INTERNALLY TERMINATED).
11. D.C. RESISTANCE ACROSS OUTPUT: NOT TO EXCEED 5K OHMS.
12. TEMPERATURE RANGE: 0° TO 70° C.

SEE TEST PROCEDURE S-764

INSERTION (LOSS OR GAIN) = $\pm (V_o - V_i)$ IN db



FINISH: MOUNTING BRACKETS DO NOT PAINT EDGES, TOP AND BOTTOM SURFACES OF MOUNTING BRACKETS.

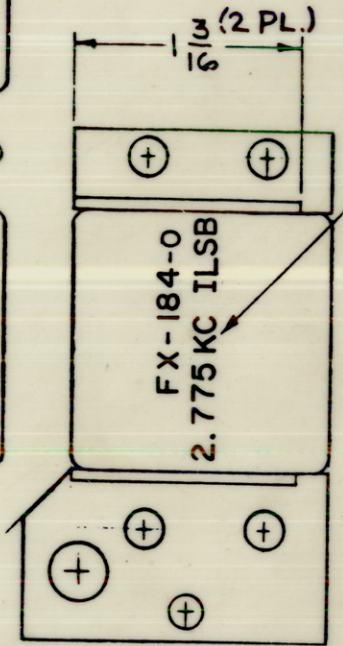
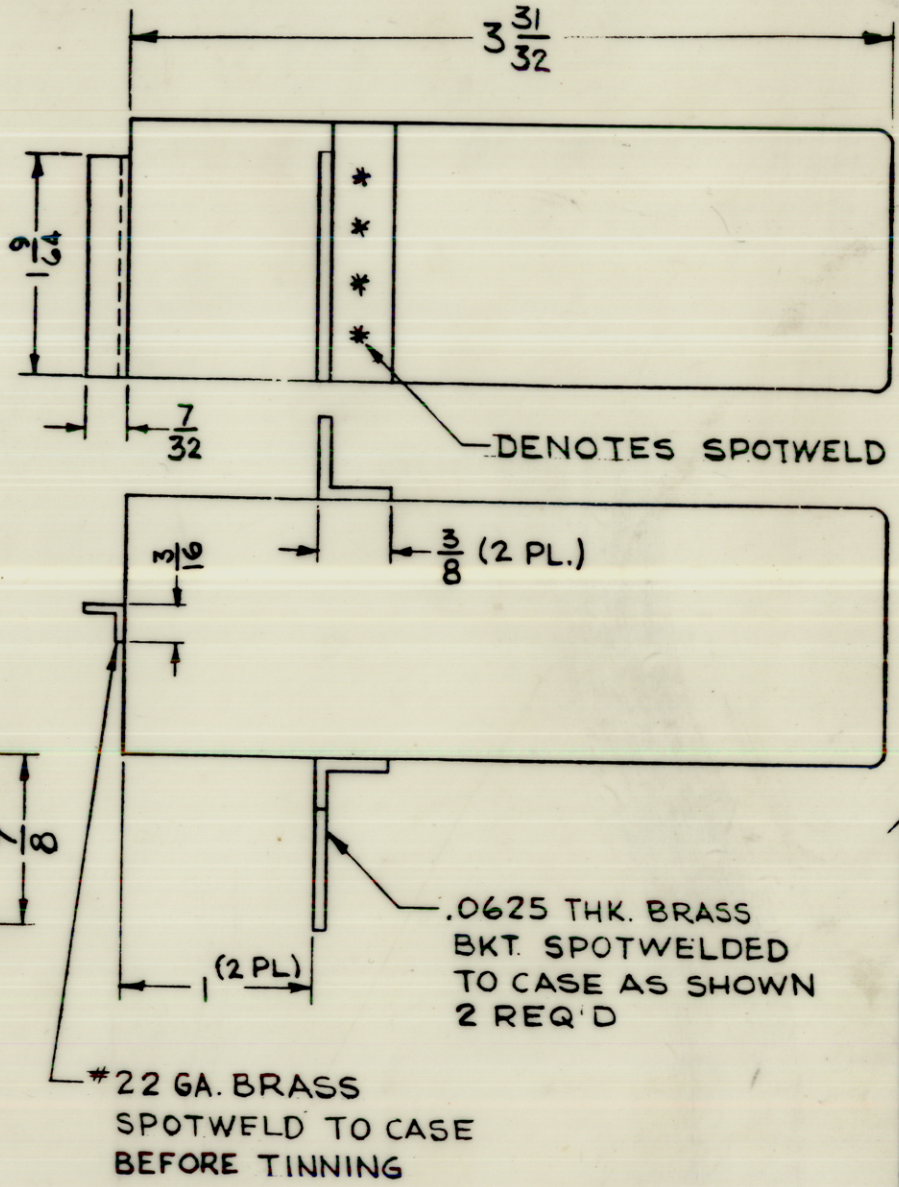
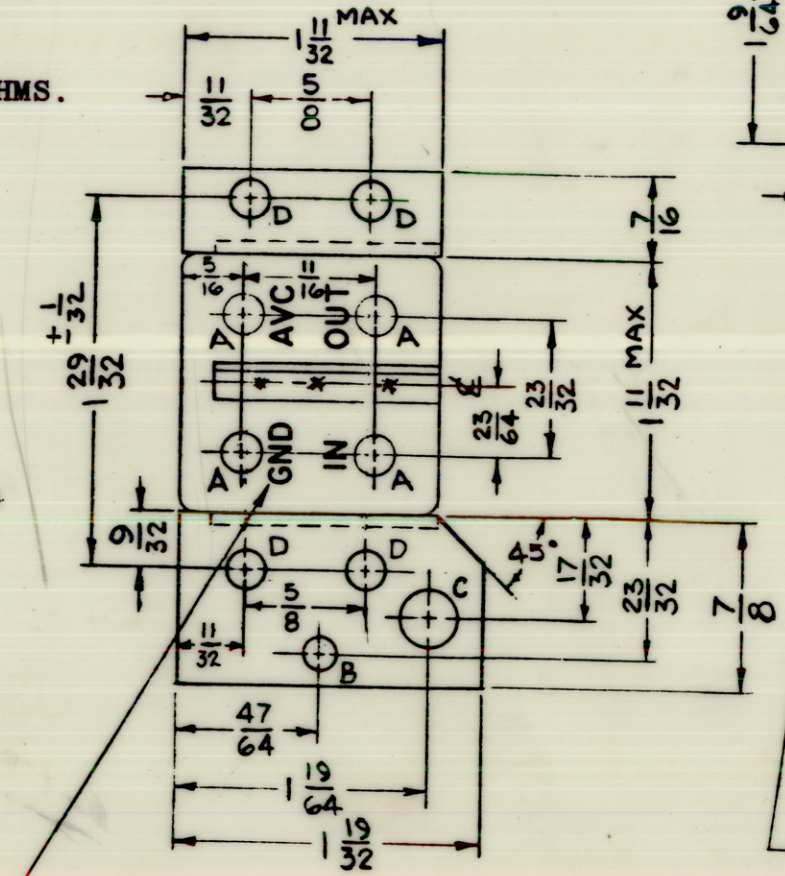
NOTES

I MSA-1	
Q'TY./UNIT	MODEL USED ON
SCALE	ASS'Y. NO.
1:1	C S401-129

THE CONTENTS OF THIS DRAWING ARE THE EXCLUSIVE PROPERTY OF THE TECHNICAL MATERIEL CORP. ITS UNAUTHORIZED USE OR REPRODUCTION IN WHOLE OR IN PART IS STRICTLY FORBIDDEN.

FX-184 A

REVISIONS					
SYM	DESCRIPTION	DATE	E.M.N. NO.	DRAFT	CHKD
O	ORIGINAL RELEASE FOR PRODUCTION	4.17.64	O	A.M.	
A	ON DIMS. $129/32$, $\pm 1/32$ ADD., ON $111/32$, MAX ADD (2 PL)	7.30.64	11982	WJB	



SYM	HOLE DIA.	REQ
A	.209 D	4
B	5/32 D	1
C	9/32 D	1
D	3/16 D	1

REQ'D.	ITEM	PART NUMBER	DESCRIPTION	SYMBOL
T.K. AALTONEN LIST OF MATERIAL				
MATERIAL BRASS			THE TECHNICAL MATERIEL CORP. MAMARONECK, NEW YORK	
FINISH HOT TIN DIP S115 TMC SMOOTH GREY ENAMEL SEE MOUNTING BRACKET NOTE			TITLE FILTER, CRYSTAL, ASYMMETRICAL 2.775 KC INNER LOWER SIDEBAND	
UNLESS OTHERWISE SPECIFIED DIMENSIONS ARE IN INCHES AND INCLUDE CHEMICALLY APPLIED OR PLATED FINISHES		DRAWN T. RAMIREZ DATE 2/27/64		
DECIMALS .X \pm .05 .XX \pm .01 .XXX \pm .005		CHECKED @ DATE 3-12-64		
FRACTIONS $\pm 1/64$ ANGLES $\pm 0^{\circ} 30'$		ELECT. DES. TRL DATE 2/29/64		
TOLERANCES		MECH. DES. WJB DATE 3-12-64		
			FINAL APPROVAL ROL DATE	
			FX-184 A	
			SHEET	
			REV. LTR.	