

**ELECTRICAL SPECIFICATIONS**

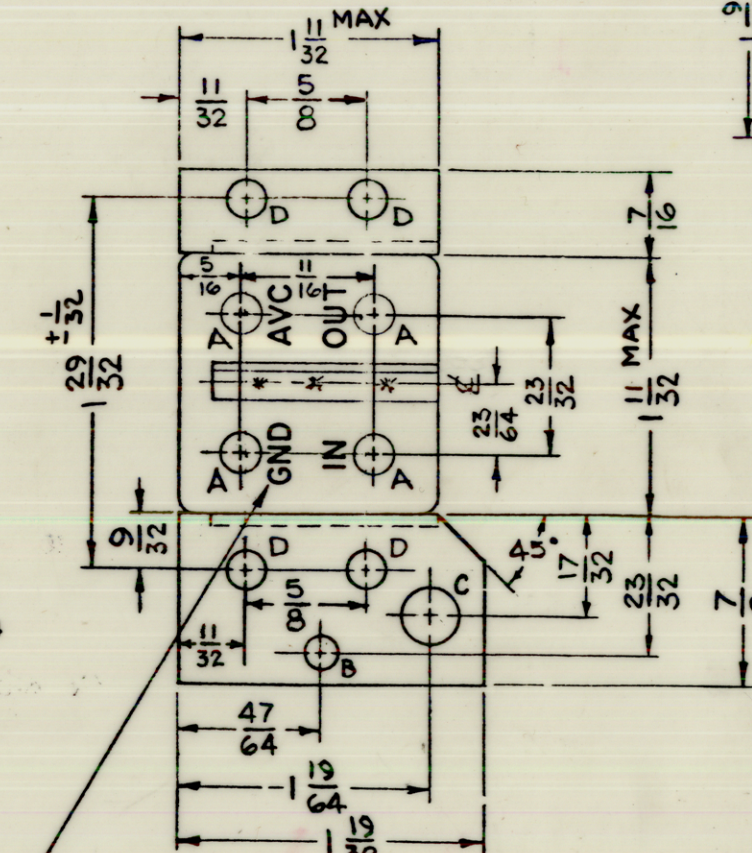
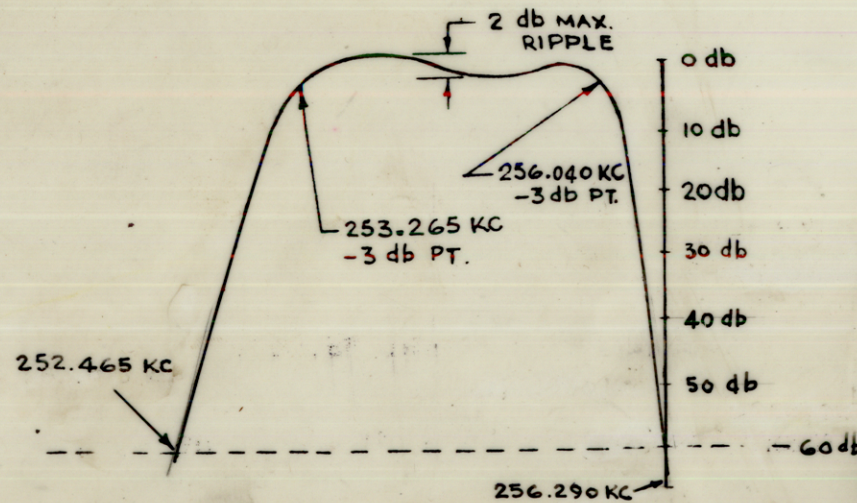
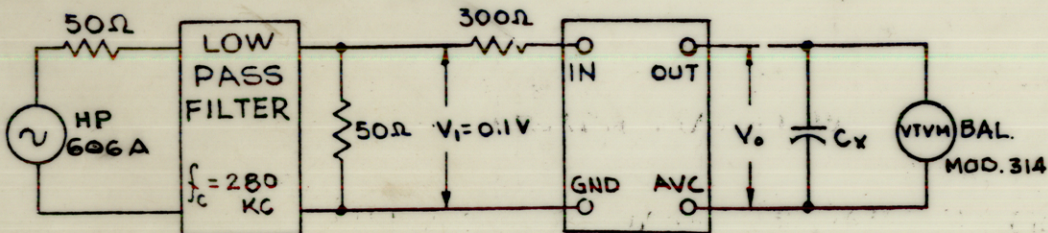
1. TYPE: OUTER UPPER SIDEBAND
2. db MEASUREMENTS: ALL db MEASUREMENTS ARE RELATIVE TO MAXIMUM SIGNAL RESPONSE IN PASSBAND.
3. CARRIER FREQUENCY: 256.290 KC
4. CARRIER SUPPRESSION: GREATER THAN 60 db
5. -3 db POINTS: 256.040 KC OR GREATER, 253.265 KC OR LESS
6. -60 db POINTS: 256.290 KC OR LESS, 252.465 KC OR GREATER OR LESS ALL RETURN LOBES AND SPURIOUS SHALL BE -60 db OR GREATER, OVER THE RANGE OF  $\pm 50$  KC FROM CARRIER FREQUENCY.
7. MAXIMUM PASSBAND RIPPLE: 2 db
8. INSERTION (LOSS OR GAIN): +3 db  $\pm 1$  db
9. INPUT IMPEDANCE: 300 OHMS (NOMINAL).
10. OUTPUT IMPEDANCE: NOT TO EXCEED 50 K OHMS (INTERNALLY TERMINATED).
11. D.C. RESISTANCE ACROSS OUTPUT: NOT TO EXCEED 5 K OHMS.
12. TEMPERATURE RANGE: 0° TO 70° C.

FX-182 A

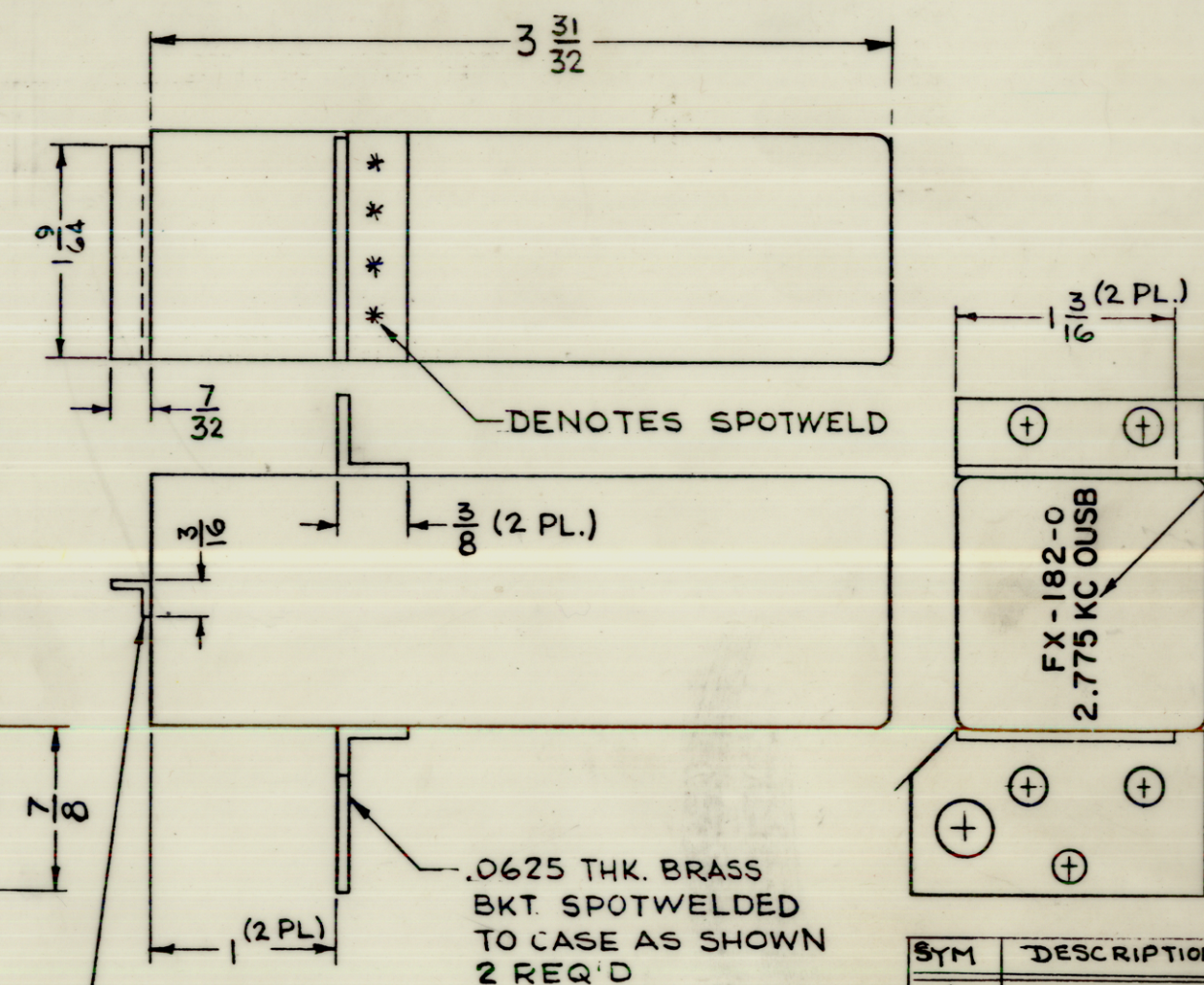
**REVISIONS**

SYM	DESCRIPTION	DATE	E.M.N. NO.	DRAFT	CHKD	APPD
X1	#4 - 260db was 230 db #6 - 256.290 KC WAS 256.840 KC, 252.465 KC WAS 252.015 KC			T.R.		T.R.
O	ORIGINAL RELEASE FOR PRODUCTION	4-17-64	O	A.M.	@	
A	ON DIMS. $1\frac{29}{32}$ , $\pm \frac{1}{32}$ ADD., ON $1\frac{11}{32}$ , MAX ADD. (2 PL)	7.30.64	11982	WB	J.P.	J.C.

SEE TEST PROCEDURE S-764  
INSERTION (LOSS OR GAIN) =  $\pm (V_o - V_i)$  IN db



STAMP AS SHOWN  
 $\frac{1}{8}$  HIGH GOTHIC, BLACK



STAMP AS SHOWN  
 $\frac{1}{8}$  HIGH GOTHIC, BLACK

SYM	DESCRIPTION	REQ
A	.209 DIA	4
B	5/32 DIA	1
C	9/32 DIA	1
D	3/16 DIA	4

FINISH: MOUNTING BRACKETS  
DO NOT PAINT EDGES, TOP AND BOTTOM SURFACES OF MOUNTING BRACKETS.

1	MSA-1	
Q'TY./UNIT	MODEL USED ON	ASS'Y. NO.
SCALE 1:1	CODE C	S401-129

THE CONTENTS OF THIS DRAWING ARE THE EXCLUSIVE PROPERTY OF THE TECHNICAL MATERIEL CORP. ITS UNAUTHORIZED USE OR REPRODUCTION IN WHOLE OR IN PART IS STRICTLY FORBIDDEN.

REQ'D.	ITEM	PART NUMBER	DESCRIPTION	SYMBOL
T.K. AALTONEN LIST OF MATERIAL				
MATERIAL BRASS			THE TECHNICAL MATERIEL CORP. MAMARONECK, NEW YORK	
FINISH HOT TIN DIP S115 TMC SMOOTH GREY ENAMEL SEE MOUNTING BRACKET NOTE			TITLE FILTER, CRYSTAL, ASYMMETRICAL 2.775 KC OUTER UPPER SIDEBAND	
UNLESS OTHERWISE SPECIFIED DIMENSIONS ARE IN INCHES AND INCLUDE CHEMICALLY APPLIED OR PLATED FINISHES		DRAWN T. RAMIREZ	DATE 2/26/64	FINAL APPROVAL [Signature]
DECIMALS .X $\pm$ .05 .XX $\pm$ .01 .XXX $\pm$ .005		CHECKED @	DATE 3-12-64	DATE
FRACTIONS $\pm 1/64$ ANGLES $\pm 0^\circ 30'$		ELECT. DES. [Signature]	DATE 4-3-64	
TOLERANCES		MECH. DES. [Signature]	DATE	
FX-182				A
SHEET				REV. LTR.