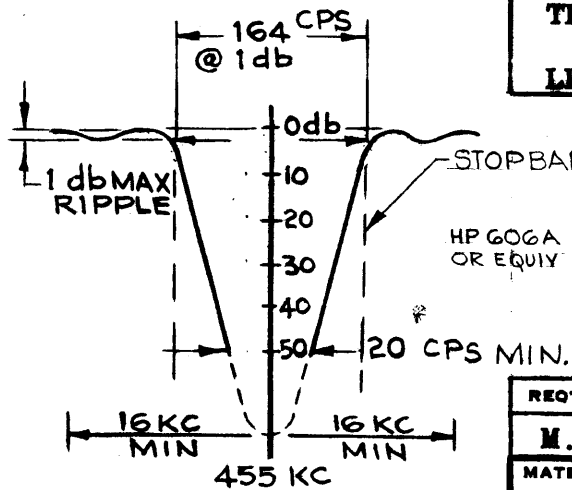
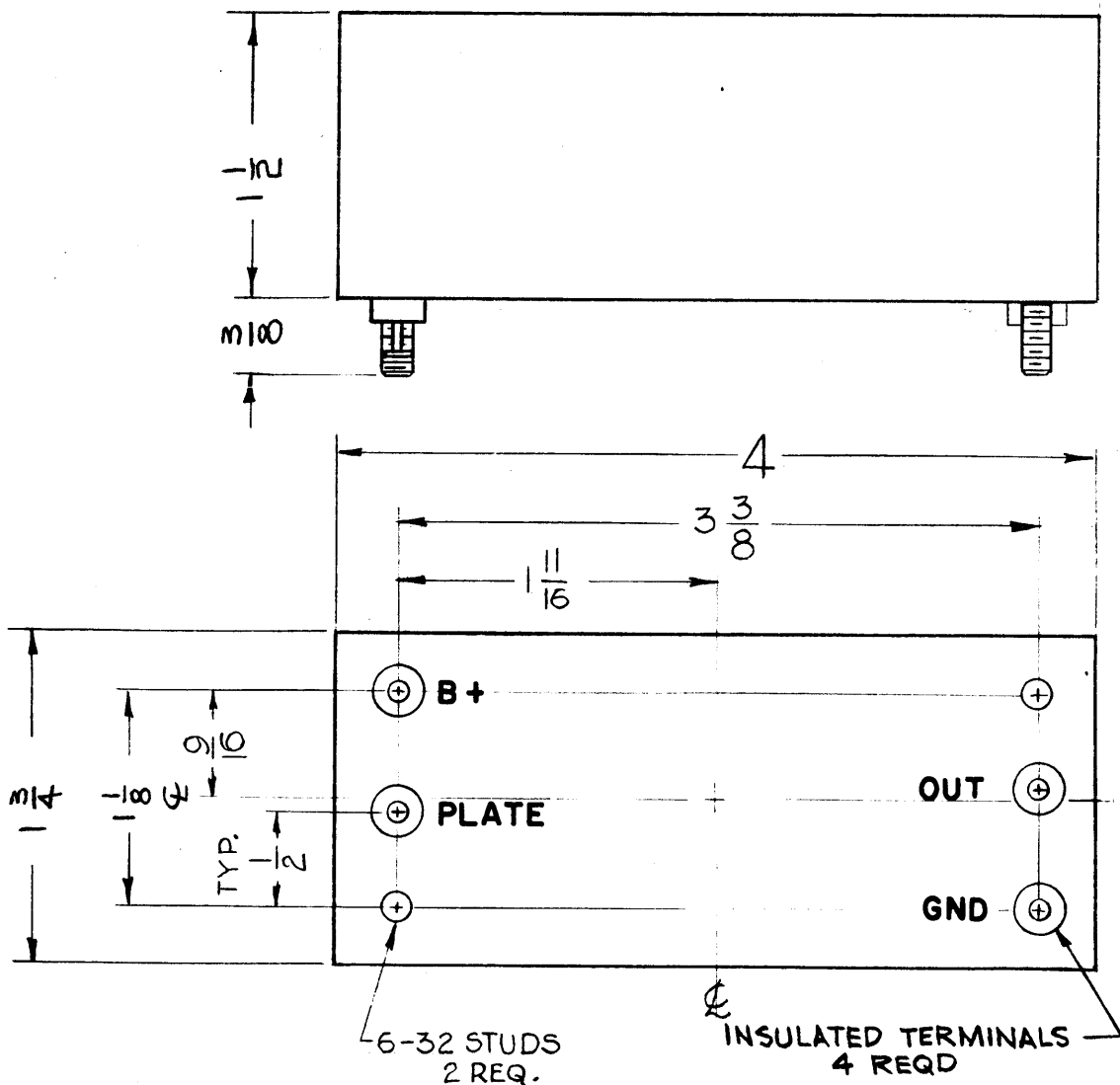


**FX-178-C**  
**FILTER, BAND SUPPRESSION**  
**455KC**

THE TECHNICAL MATERIEL CORP.  
MAMARONECK NEW YORK



REVISIONS					
SYM	DESCRIPTION	DATE	E.M.N. NO.	DRAFT	CHKD
A	SPECS REVISED, TEST SCHEMATIC & GRAPH ADDED	7-1-63	9273	E	W
B	STOP BAND ADDED, 20 CPS WAS ±10CPS IN NOTE 5	8/1/63	10060	E	W
C	GENERAL UPDATING & CLARIFICATION	11/21/63	10440	E	W

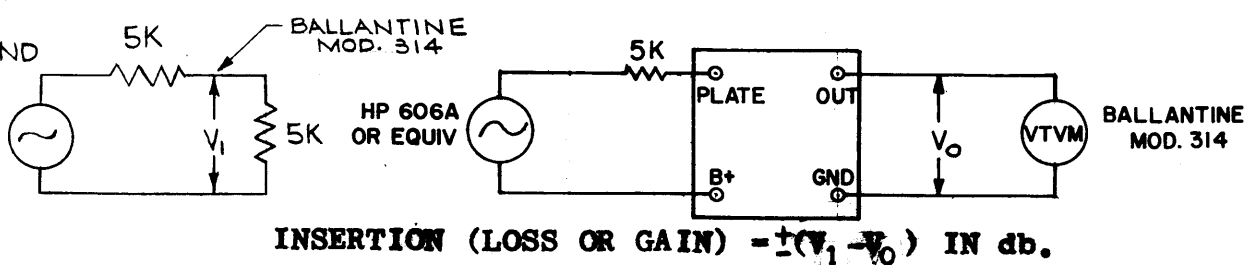
FX-178

**ELECTRICAL SPECIFICATIONS**

1. TYPE: BAND SUPPRESSION.
2. db MEASUREMENTS: ALL db MEASUREMENTS ARE RELATIVE TO MAXIMUM SIGNAL RESPONSE IN PASSBAND.
3. FREQUENCY: 455 KC.
4. BANDWIDTH AT -1 db: +82 CPS MAXIMUM.
5. BANDWIDTH AT -50 db: 20 CPS MINIMUM. WITHIN THE STOPBAND.
6. PASSBAND, BANDWIDTH: +16 KC MINIMUM ABOUT 455 KC.
7. MAXIMUM PASSBAND RIPPLE: 1 db.
8. INSERTION (LOSS OR GAIN): -3 db MAXIMUM.
9. INPUT IMPEDANCE: 5K OHMS NOT TERMINATED.
10. OUTPUT IMPEDANCE: 5K OHMS TERMINATED.
11. TEMPERATURE RANGE: 0° TO 70° C.
12. TEST IN ACCORDANCE WITH S764

**MECHANICAL SPECIFICATIONS**

CASE: RECTANGULAR, BRASS, HERMETICALLY SEALED  
FINISH: S-115 TMC SMOOTH GRAY ENAMEL, EXCEPT STUD AND TERMINAL END  
STUDS: STEEL, NICKEL PLATED 6-32 X 3/8  
SIZE: 4 X 1-3/4 X 1-1/2, EXCLUSIVE OF TERMINALS  
TERMINALS: SOLDER TYPE, INSULATED (APPROXIMATELY .200 DIAMETER X 3/8 HIGH)  
LETTERING: 1/8 HIGH BLACK GOTHIC AS SHOWN (TOP AND BOTTOM)



REQ'D.	ITEM	PART NUMBER	DESCRIPTION	SYMBOL
<b>M. Gellman LIST OF MATERIAL</b>				
MATERIAL			<b>THE TECHNICAL MATERIEL CORP.</b> MAMARONECK, NEW YORK	
FINISH			TITLE <b>FILTER, BAND SUPPRESSION</b> 455 KC	
UNLESS OTHERWISE SPECIFIED DIMENSIONS ARE IN INCHES AND INCLUDE CHEMICALLY APPLIED OR PLATED FINISHES			DRAWN G.D.L.	DATE 7-26-62
			CHECKED H.D.	DATE 7-26-62
			ELECT. DES. J.M.	DATE 7-26-62
			MECH. DES.	DATE
			FINAL APPROVAL <i>[Signature]</i> TFH	
			DATE 7-3-63	
			FX-178	
			C	
			SHEET	
			REV. LTR.	

Q'TY./UNIT	HNF-1	MODEL USED ON	ASS'Y. NO.
SCALE	DO NOT SCALE	CODE	
THE CONTENTS OF THIS DRAWING ARE THE EXCLUSIVE PROPERTY OF THE TECHNICAL MATERIEL CORP. ITS UNAUTHORIZED USE OR REPRODUCTION IN WHOLE OR IN PART IS STRICTLY FORBIDDEN.			
DECIMALS	TOLERANCES	FRACTIONS	ANGLES
.X ± .05		± 1/64	
.XX ± .01		± 0° 30'	
.XXX ± .005			

NOTES