

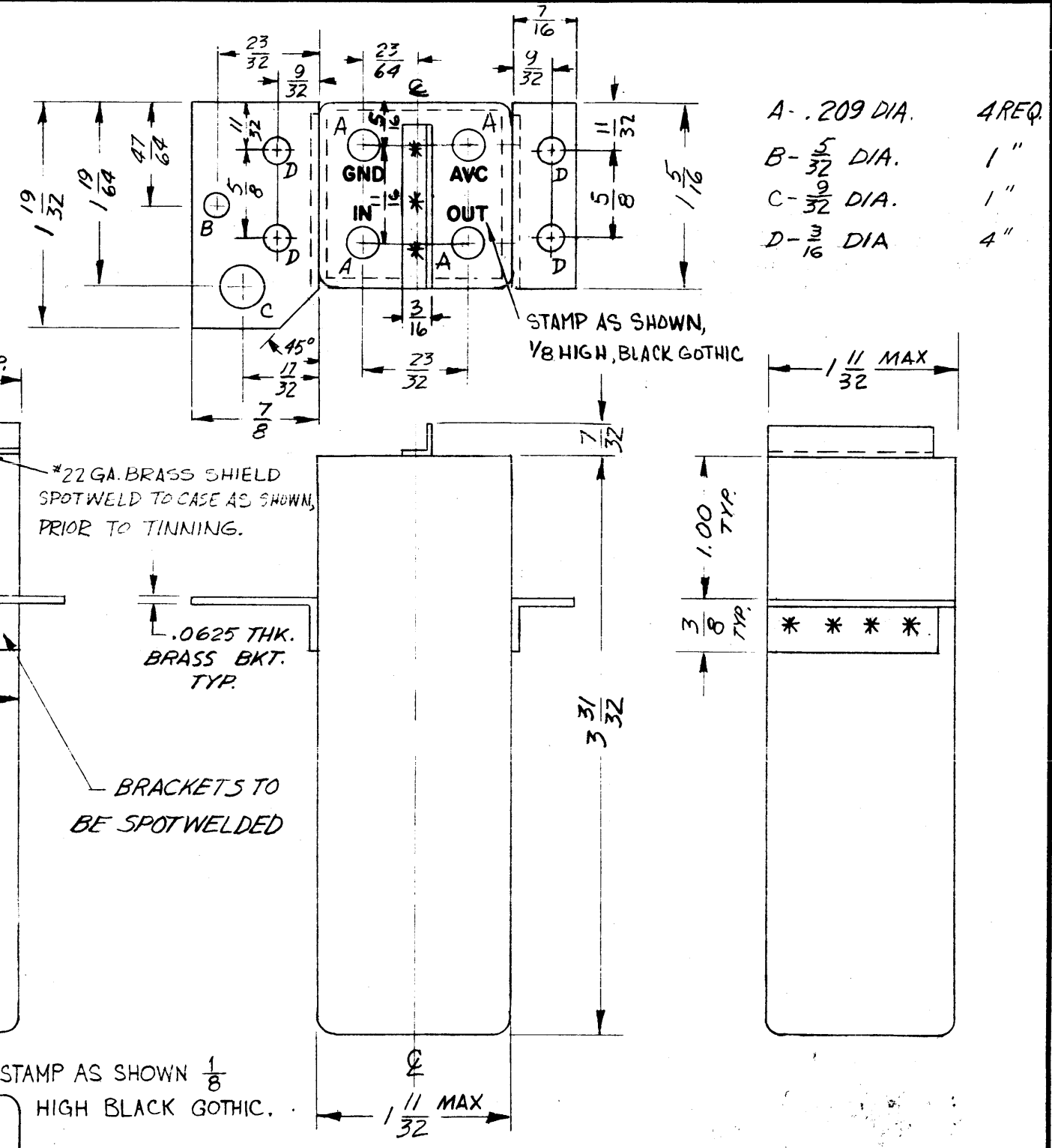
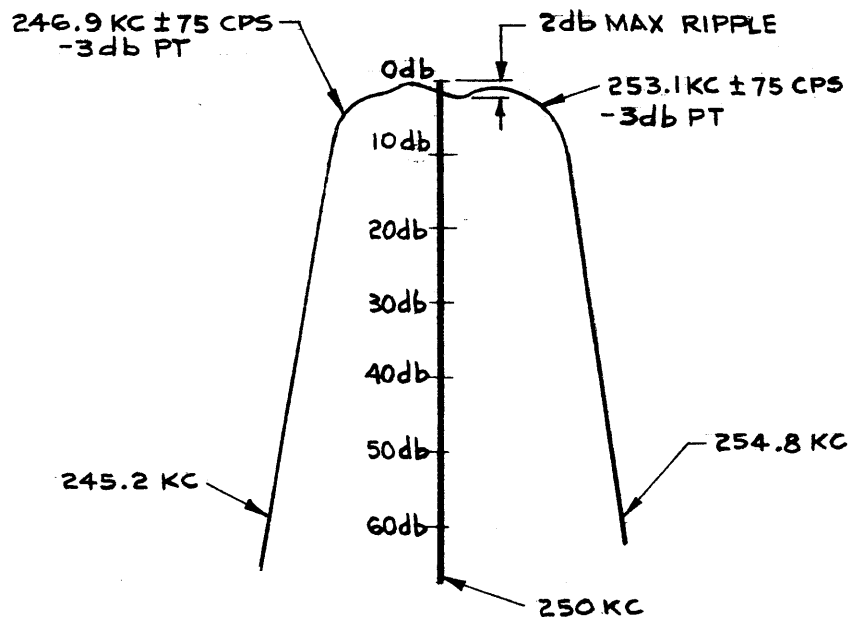
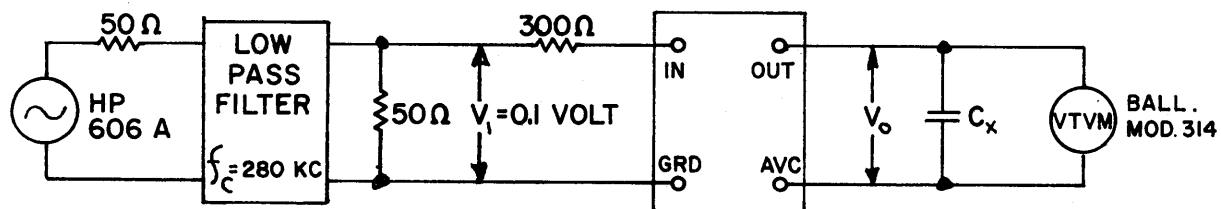
EX-174

THE CONTENTS OF THIS DRAWING ARE THE EXCLUSIVE PROPERTY OF THE TECHNICAL MATERIEL CORP. ITS UNAUTHORIZED USE OR REPRODUCTION IN WHOLE OR IN PART IS STRICTLY FORBIDDEN.

ELECTRICAL SPECIFICATIONS

1. TYPE SYMMETRICAL.
2. db MEASUREMENTS: ALL db MEASUREMENTS ARE RELATIVE TO THE MAXIMUM SIGNAL RESPONSE IN PASSBAND.
3. CARRIER FREQUENCY: 250 KC.
4. -3 db POINTS: 246.9 KC +75 CPS, 253.1 KC +75 CPS.
5. -60 db POINTS: 245.2 OR GREATER, 254.8 OR LESS. ALL RETURN LOBES AND SPURIOUS SHALL BE -60 db OR GREATER, OVER THE RANGE +50 KC FROM CARRIER FREQUENCY.
6. MAXIMUM PASSBAND RIPPLE: 2 db
7. INSERTION (LOSS OR GAIN): +14 db +2 db.
8. INPUT IMPEDANCE: 300 OHMS (NOMINAL).
9. OUTPUT IMPEDANCE: NOT TO EXCEED 50K OHMS (INTERNALLY TERMINATED).
10. D.C. RESISTANCE ACROSS OUTPUT: NOT TO EXCEED 5K OHMS.
11. TEMPERATURE RANGE: 0° TO 70° C.

SEE TEST PROCEDURE S-764. INSERTION (LOSS OR GAIN) = $\pm(V_0 - V_1)$ IN db.



- A - .209 DIA. 4 REQ.
- B - 5/32 DIA. 1"
- C - 9/32 DIA. 1"
- D - 3/16 DIA. 4"

FX-174 E
6.0KC SYM

DIM 1 1/32 MAX. WAS 1 5/16 REF D HOLES WERE 1/8 X 3/16 SLOTS SPECS. TEST SCHEMATIC PICTORIAL REVISED		G-28-3	9345			
SYM	DESCRIPTION	DATE	CH. NO.	DRAFTS	CHECKER	ENG. APP.
UNLESS OTHERWISE SPECIFIED:		SCALE: DO NOT SCALE (S401-95)				
DIMENSIONS ARE IN INCHES		MAXIMUM ALLOWABLE TOLERANCES HAVE BEEN DETERMINED AND ANY DEVIATIONS WILL BE CAUSE FOR REJECTION.				
TOLERANCES ON FRACTIONS ± 1/64 DECIMALS ± .05 ANGLES ± 1/2°		REMOVE ALL BURRS AND SHARP EDGES				

REQ. PER UNIT	1	MODEL	HFI-1	SECTION		ASS'Y. NO.		DATE	9-11-61
USED ON									

REQ. ITEM	PART NO.	M. GELLMAN	DESCRIPTION	SYMBOL
STOCK SIZE		THE TECHNICAL MATERIEL CORP. MAMARONECK, NEW YORK		
BRASS		FILTER, SYMMETRICAL CRYSTAL		
MATERIAL		6 KC		
HOT TIN DIP		WA	OB	
TYPE & TEMPER	HEAT TREAT. SPEC.	DRAWN	CHECKER	FINAL APPROVAL
5115 TMC SMOOTH GREY ENAMEL		R.P.S.	R.P.S.	FX-174
FINISH & SPEC. NO.		ELEC. DES. APP.	MECH. DES. APP.	E