

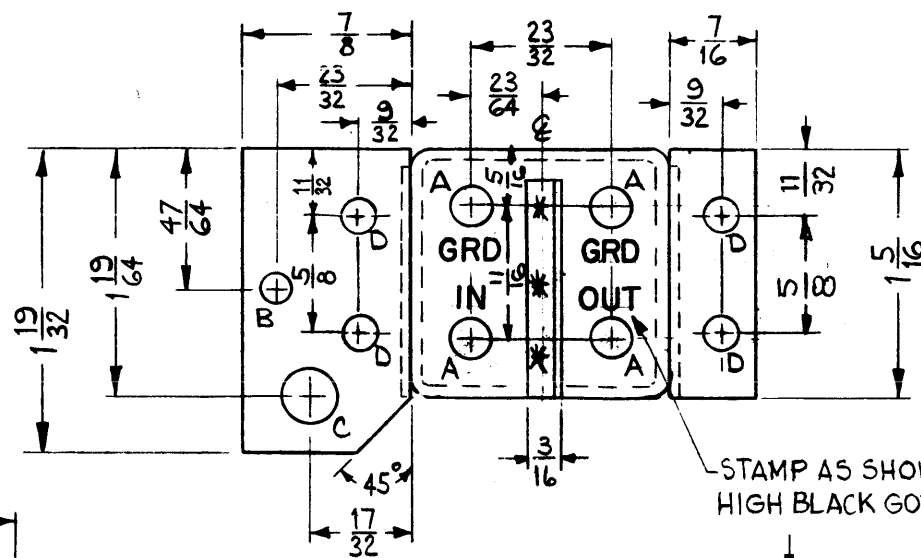
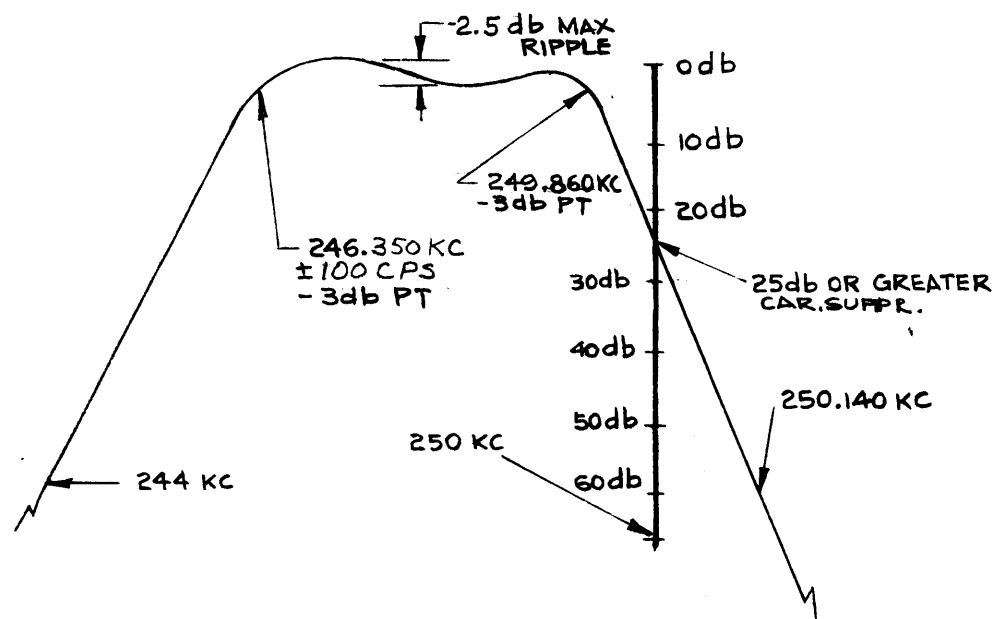
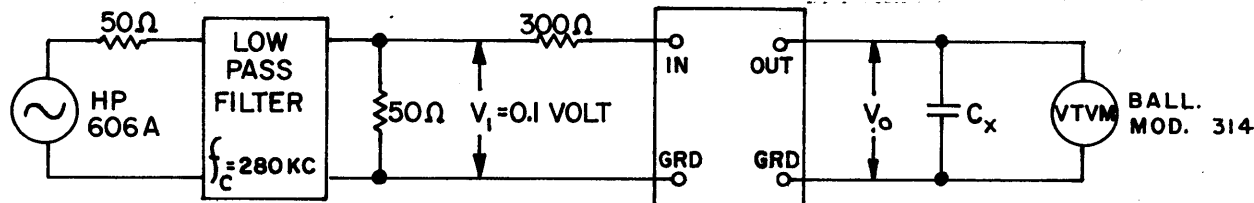
FX-169

THE CONTENTS OF THIS DRAWING ARE THE EXCLUSIVE PROPERTY OF THE TECHNICAL MATERIEL CORP. ITS UNAUTHORIZED USE OR REPRODUCTION IN WHOLE OR IN PART IS STRICTLY FORBIDDEN.

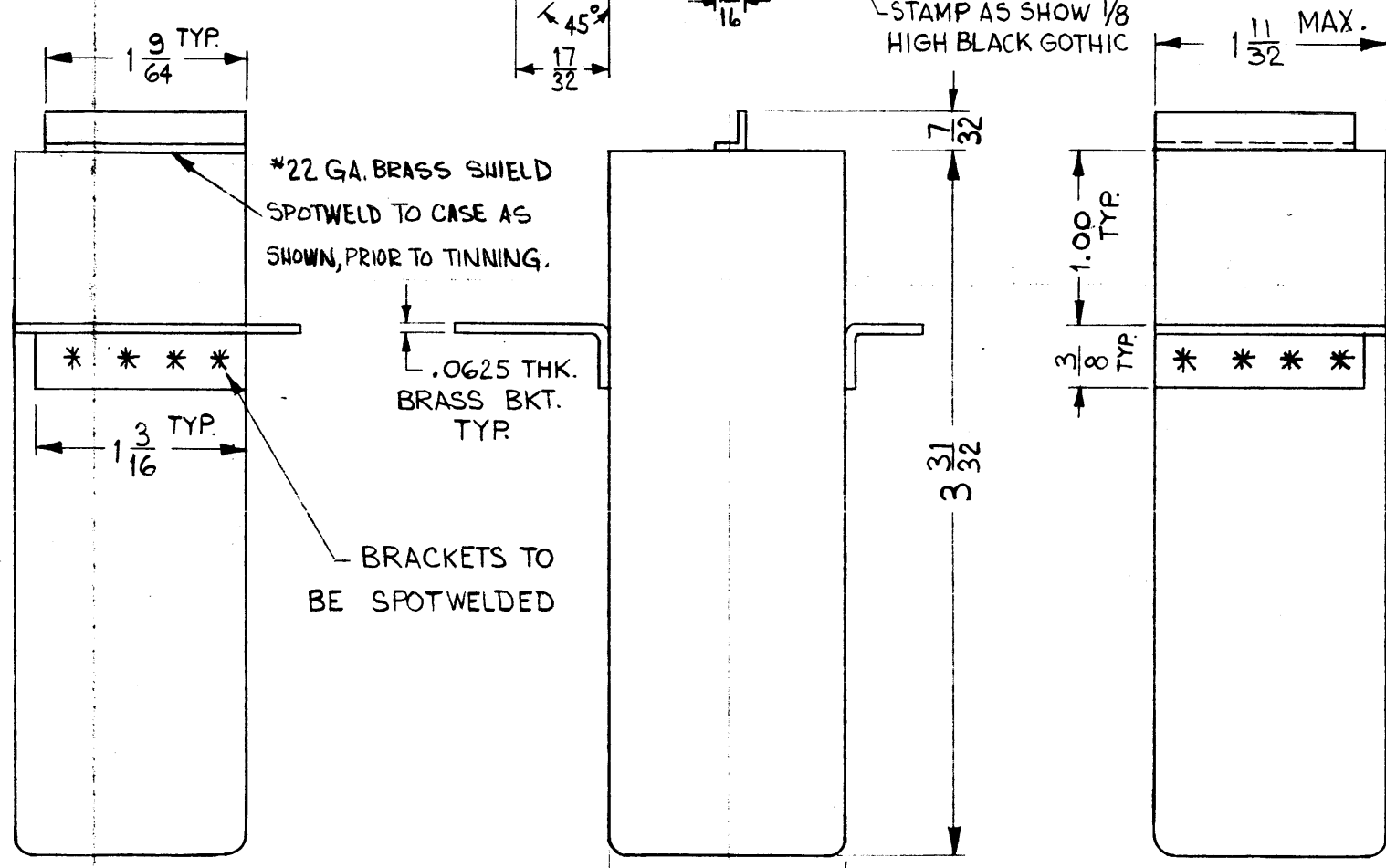
ELECTRICAL SPECIFICATIONS

1. TYPE: LOWER SIDEBAND.
2. db MEASUREMENTS: ALL db MEASUREMENTS ARE RELATIVE TO MAXIMUM SIGNAL RESPONSE IN PASSBAND.
3. CARRIER FREQUENCY: 250 KC.
4. CARRIER SUPPRESSION: -25 db OR GREATER.
5. -3 db POINTS: 249.860 KC OR GREATER, 246.350KC±100 CPS.
6. -60 db POINTS: 244.0 KC OR GREATER, 250.140 OR LESS
ALL RETURN LOBES AND SPURIOUS SHALL BE -60 db OR GREATER, OVER THE RANGE OF +50 KC FROM CARRIER FREQUENCY.
7. MAXIMUM PASSBAND RIPPLE: 2.5 db
8. INSERTION (LOSS OR GAIN): +3 db +1 db
9. INPUT IMPEDANCE: 300 OHMS (NOMINAL).
10. OUTPUT IMPEDANCE: NOT TO EXCEED 50K OHMS (INTERNALLY TERMINATED).
11. D.C. RESISTANCE ACROSS OUTPUT: NOT TO EXCEED 5K OHMS.
12. TEMPERATURE RANGE: 0° TO 70° C.

SEE TEST PROCEDURE S-764. INSERTION (LOSS OR GAIN) = ±(V₀-V₁) IN db.



- A - .209 DIA. 4 REQ
- B - 5/32 DIA. 1 "
- C - 9/32 DIA. 1 "
- D - 3/16 DIA. 4 "



STAMP AS SHOWN 1/8 HIGH BLACK GOTHIC. W/LATEST REV. LETTER.

FX-169-3.5KC LSB

REQ.	ITEM	PART NO.	M. GELLMAN	DESCRIPTION	SYMBOL
				THE TECHNICAL MATERIEL CORP. MAMARONECK, NEW YORK	
				FILTER, ASYMMETRICAL CRYSTAL	
				3.5 KC LOWER SIDEBAND	
				HOT TIN DIP	
				TYPE & TEMPER. HEAT TREAT. SPEC.	
				S115 TMC SMOOTH GRAY ENAMEL OR BRUSHED NICKEL	
				FINISH & SPEC. NO.	
				ELEC. DES. APP. MECH. DES. APP.	
				FX-169	J

SYM	DESCRIPTION	DATE	CH. NO.	DRAFTS	CHECKER	ENG. APP.
J	246.350 KC ± 100 CPS WAS 246.4 KC ± 50 CPS	2.15.68	18769	H.S.	M.V.	EFM
UNLESS OTHERWISE SPECIFIED:						
DIMENSIONS ARE IN INCHES						
TOLERANCES ON FRACTIONS ± 1/64 DECIMALS ± .005 ANGLES ± 1/20						
SCALE: DO NOT SCALE (S401-95)						
MAXIMUM ALLOWABLE TOLERANCES HAVE BEEN DETERMINED AND ANY DEVIATIONS WILL BE CAUSE FOR REJECTION. REMOVE ALL BURRS AND SHARP EDGES						
REQ. PER UNIT	MODEL	SECTION	ASSY. NO.	DATE	USED ON	
1	HFI-1			9-7-61		
1	SBS-1			9-7-61		

STANDARD DRAWING