

COIL DATA

SPECIFICATIONS

	L1	L2
CAM	.250	.250
CAM GEAR	105	105
CAM DRIVER	69	69
IND (uh)	(90-100)	(90-100)
Q	75 or better	75 or better
COIL RES. Ω	3.5 Ω Approx.	3.5 Ω Approx.
TEST FREQ. (KC)	790	790

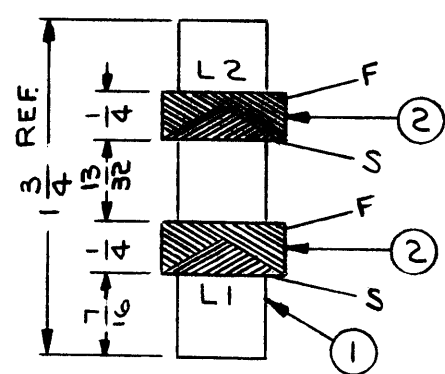
WINDING DATA

URNS WIRE	L1	L2
	100	100
	5/41 Q.S. LITZ	5/41 Q.S. LITZ

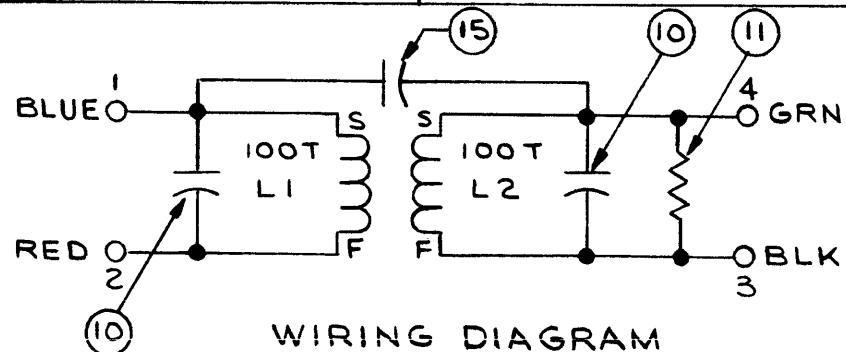
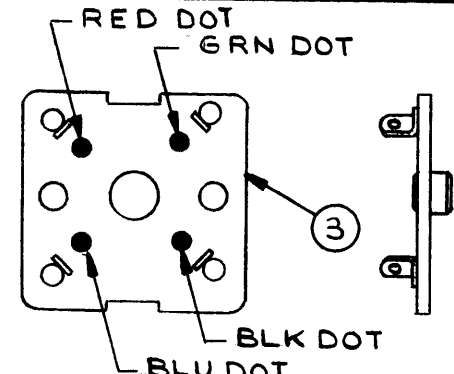
WINDING INSTRUCTIONS

1. Wind L1 First 100 Turns 7/16 from end of form. Stake Leads with GL-103 (Item 12)
2. Wind L2 7/16 from end of L1, 100 turns. Stake Leads with GL-103 (Item 12)
3. All Leads Approximately 3" long, Measure Q, Ind, and Resistor w/o core.
4. Bake Dry for 1/2 Hour at 215°F.
5. Coat coils with Q-Max (GL-102) Item 14 and Bake Dry for 1/2 Hour at 215°F.
6. Color coded base as shown.
7. Assemble as per Assembly drawing, place in can.

WINDING ASSEMBLY



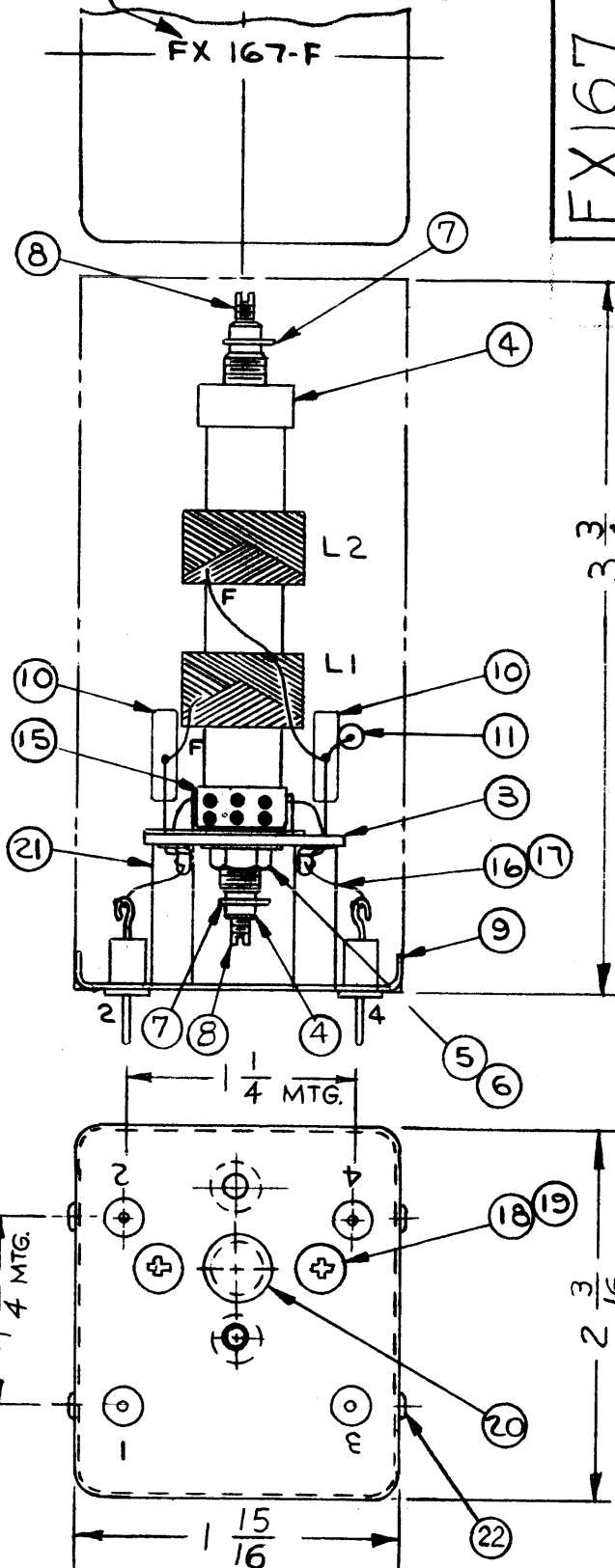
MARKING - COLOR CODE



WIRING DIAGRAM

NOTES

STAMP TMC PART NO. 1/8 HIGH BLK GOTHIC W/LATEST REV. LETTER



FX167 F

REVISIONS

SYM	DESCRIPTION	DATE	E.M.N. NO.	DRAFT	CHKD	APPD
O	ORIGINAL RELEASE	5/12/64		JL		
D	REDRAWN & REVISED	6/26/64	11482	A.M.		
E	ON PICT. ONE HOLE ADDED TO COVER ON TMC P/N STAMP REV. LETTER CHNG. TO "E"	11.5.64	12870	hb		
F	ITEM (3) WAS A1004	3-4-64	13647	G.O.L.		

REQ'D.	ITEM	PART NUMBER	DESCRIPTION	SYMBOL
	4	22	SFB0256SN3	SCREW, THREAD CUTTING
	2	21	TE-117-4	SPACER
	1	20	101-9	PLUG BUTTON
	2	19	SCBPO632BN4	SCREW MACHINE
	2	18	LW200RN	WASHER, LOCK, EXTERNAL
	1	17	PK-104-1-.034	SLEEVING, SIZE #20
	1	16	WL-100-7	WIRE, BUSS, SIZE #22
	1	15	CM15C050J	CAPACITOR, FIXED, MICA
	X	14	GL-102	Q-MAX
	X	13	BS-100	SOLDER, SOFT
	X	12	GL-103	DUCO CEMENT
	1	11	RC20GF683J	RESISTOR, FIXED
	2	10	CM20D102G	CAPACITOR, FIXED
	1	9	BX-213	COVER, SUB-ASSEMBLY
	2	8	CI-109-11	CORE
	2	7	SP-102	SPRING, WASHER
	1	6	NT-102	NUT, HEX
	1	5	LW125LRN	LOCK WASHER
	2	4	SM-110	BUSHING
	1	3	A 977	TERMINAL BD. SUB-ASSY.
	X	2	WI-104-541 SCQS	WIRE, LITZ
	1	1	CF-100	COIL FORM

LIST OF MATERIAL

MATERIAL		THE TECHNICAL MATERIEL CORP. MAMARONECK, NEW YORK			
FINISH		TITLE TRANSFORMER, IF, ADJ.			
UNLESS OTHERWISE SPECIFIED DIMENSIONS ARE IN INCHES AND INCLUDE CHEMICALLY APPLIED OR PLATED FINISHES		DRAWN J. LESHINSKI	DATE 5/12/64	FINAL APPROVAL <i>[Signature]</i>	DATE 5/13/64
DECIMALS .X ± .05 .XX ± .01 .XXX ± .005		CHECKED <i>[Signature]</i>	DATE 5/12/64	SHEET FX167	
FRACTIONS ± 1/64 ANGLES ± 0° 30'		ELECT. DES. <i>[Signature]</i>	DATE	REV. LTR. F	
TOLERANCES		MCH. DES. <i>[Signature]</i>	DATE	SHEET	

1	GPR-92	
Q'TY./UNIT	MODEL USED ON	ASS'Y. NO.
SCALE NONE	CODE A	
THE CONTENTS OF THIS DRAWING ARE THE EXCLUSIVE PROPERTY OF THE TECHNICAL MATERIEL CORP. ITS UNAUTHORIZED USE OR REPRODUCTION IN WHOLE OR IN PART IS STRICTLY FORBIDDEN.		