

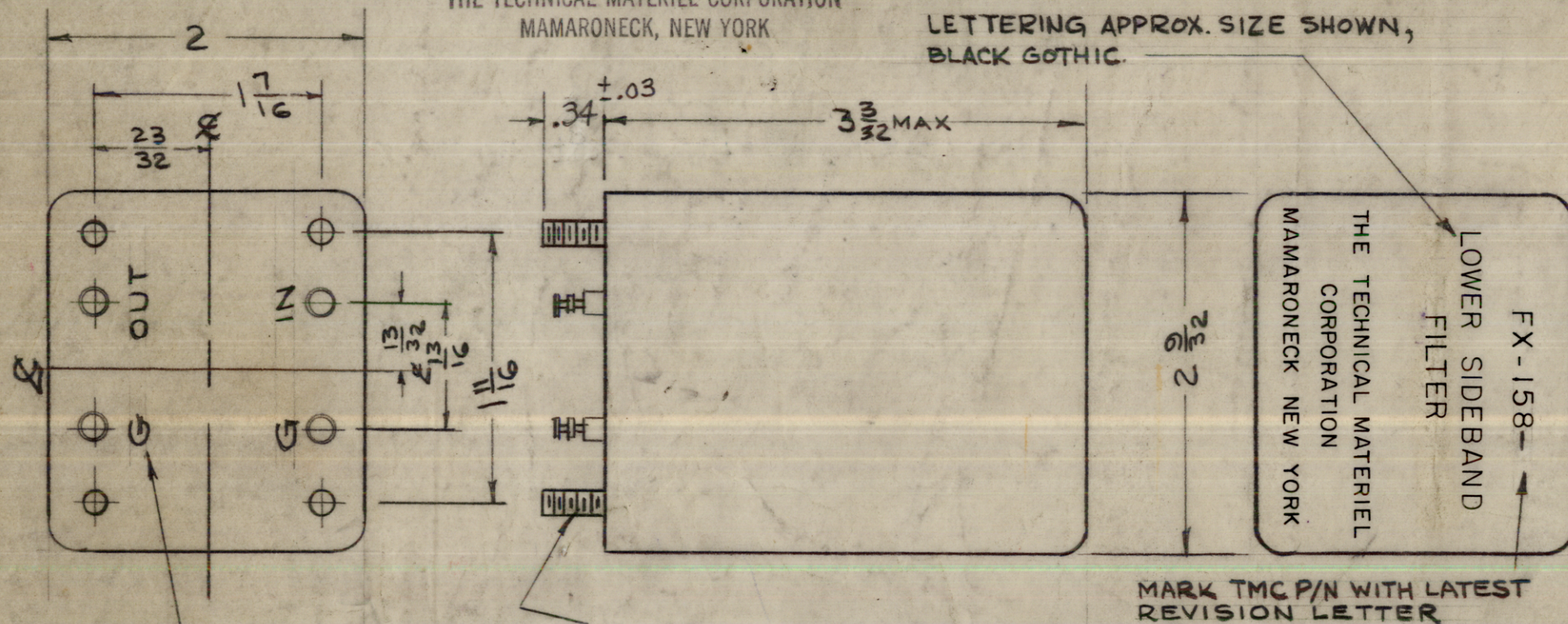
EX-158 K

NOTICE TO PERSONS RECEIVING THIS DRAWING
 THE TECHNICAL MATERIEL CORPORATION claims proprietary right in the material disclosed hereon. This drawing is issued in confidence for engineering information only and may not be reproduced or used to manufacture anything shown hereon without permission from THE TECHNICAL MATERIEL CORPORATION to the user. This drawing is loaned for mutual assistance and is subject to recall at any-time.

Property of:

THE TECHNICAL MATERIEL CORPORATION
 MAMARONECK, NEW YORK

LETTERING APPROX. SIZE SHOWN,
 BLACK GOTHIC.



METAL STAMP AS SHOWN
 1/8 HIGH GOTHIC

6-32 STUDS
 4 REQ.

ELECTRICAL SPECIFICATIONS

TYPE: LOWER SIDEBAND

CARRIER FREQUENCY: 250 KC
 CARRIER SUPPRESSION: -20 db OR GREATER
 -2 db POINTS : NOT LESS THAN 249.750 KC, 241.500 KC +500 CPS

TRAILING SLOPE: -40 db OR MORE AT 234 KC.

UNWANTED SIDEBAND ATTENUATION: GREATER THAN -60db FOR FREQUENCIES HIGHER THAN 250.400 KC INCLUDING ALL RETURN LOBES AND SPURIOUS
 MAXIMUM PASSBAND RIPPLE: 2 db

INSERTION LOSS: -7db +2db (SEE SCHEMATIC BELOW FOR MEASURING FILTER LOSS)

INPUT IMPEDANCE: 10,000 OHMS UNBALANCED

OUTPUT IMPEDANCE: 10,000 OHMS UNBALANCED

TEMPERATURE RANGE: - 0° TO +70° C.

MECHANICAL SPECIFICATION:

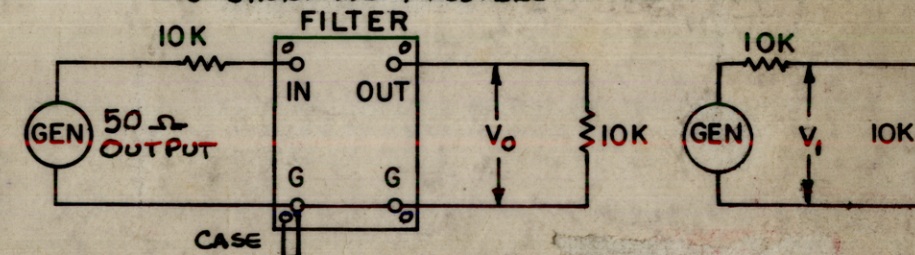
CASE: Steel

FINISH: TMC Gray (S-115) Or Brushed Nickel
 NOTE: Terminal End Unpainted

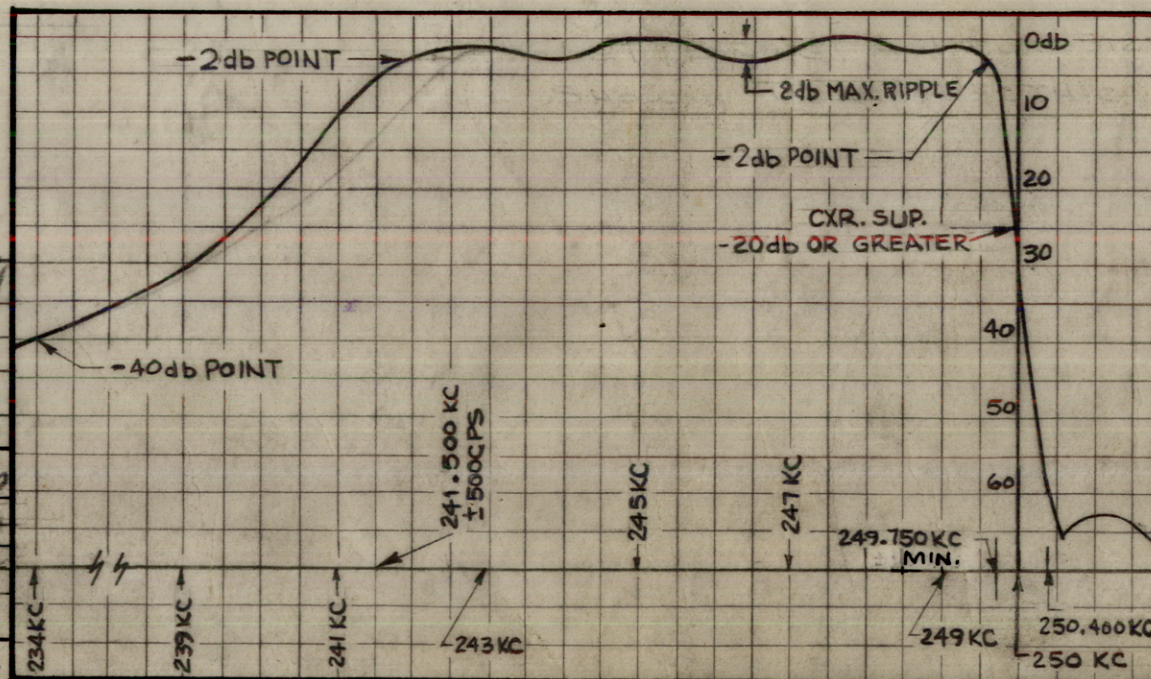
MOUNTING: 6-32 Studs (4Req.)

TERMINAL: Double End Pin Type, Brass, Silver Plated, GLASS OR Teflon Insulated.

ALL TEST LEADS TO BE AS SHORT AS POSSIBLE



INSERTION (LOSS OR GAIN) = +(V1-V0) IN DB



K	QTH OF STUDS WAS 3/8	7.3.67	18343	HLG		R.H. MM
J	"GLASS OR" ADD. TO TERM NOTE	9/23/66	16923	WV	OCB	MM
H	ON PERF. CURVE MAX. RIPPLE WAS 3db	6-9-66	16365	RB	OCB	MM
G	ELEC. MECH. & SCHEMATIC SPECS. REVISED	2-1-66	15602	HLA	OCB	MM
F	CLERICAL CHANGE	12/31/65	CC	WV	OCB	MM
E	CLERICAL CHANGE	11.9.64	-	HLG	@	
D	TEST SCHEM. & SPECS REVISED	6-26-63	9346	WV	OCB	MM
C	3-3/32 DIM WAS 3-1/16	6-4-63	8171	WV	OCB	MM
B	CHART & SPECS CLARIFIED	4-23-63	8847	WV	OCB	MM
A	3 SCHEMATIC ADDED	2-	83	WV	OCB	MM
	2 ELEC SPECS. CLARIFIED	26-	353	WV	OCB	MM
	1 PERFORMANCE CHART ADDED	63		WV	OCB	MM

ISSUE ITEM		CHANGED FROM	DATE	CH. NO.	DRAFTS	CHECKER	ENG. APP.
TOLERANCES		SCALE:					
DEC. DIM. ± .005		MAXIMUM ALLOWABLE TOLERANCES HAVE BEEN DETERMINED AND ANY DEVIATIONS WILL BE CAUSE FOR REJECTION: REMOVE ALL BURRS AND SHARP EDGES					
FRAC. DIM. ± 1/64							
ANGULAR DIM. ± 1/2°							

REQ. PER UNIT	3	MODEL	SGE-3.9	PROJECT NO.	AX-205	ASSY. NO.	7-10-59	DATE
USED ON								

REQ.	ITEM	PART NO.	DESCRIPTION	SYMBOL
			THE TECHNICAL MATERIEL CORP. MAMARONECK, NEW YORK	
		STOCK SIZE	LOWER SIDEBAND	
		MATERIAL	FILTER BANDPASS	
		TYPE & TEMPER	HEAT TREAT. SPEC.	DRAWN
				CHECKED
		FINISH & SPEC. NO.	ELEC. DES. APP.	MECH. DES. APP.
			HLG	ARB
			RWB	RWB
			FX-158	K