

REQ.	ITEM	PART NO.	DESCRIPTION	SYMBOL
------	------	----------	-------------	--------

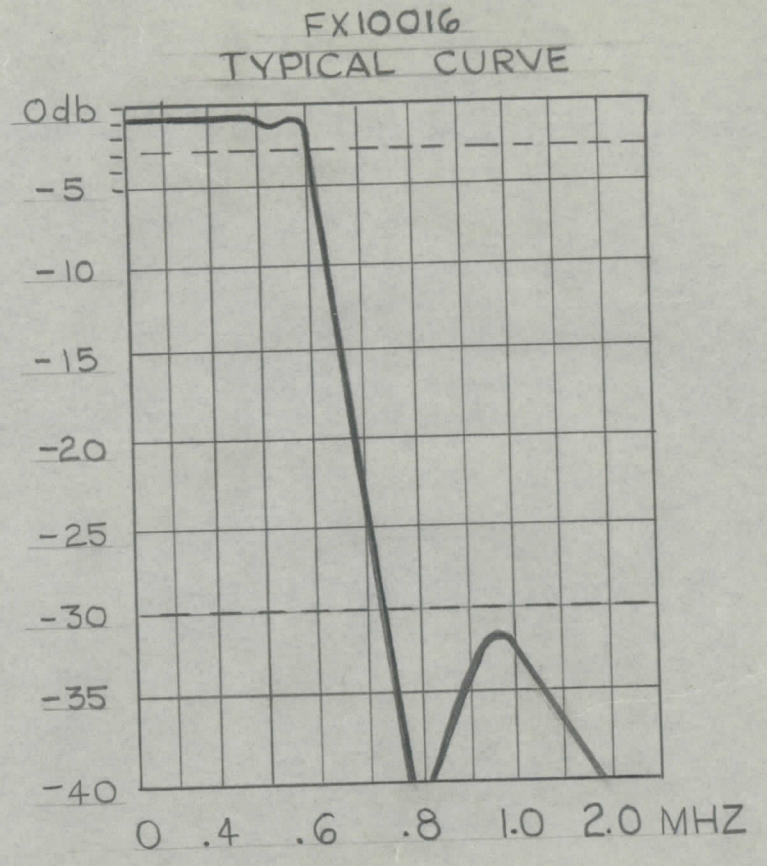
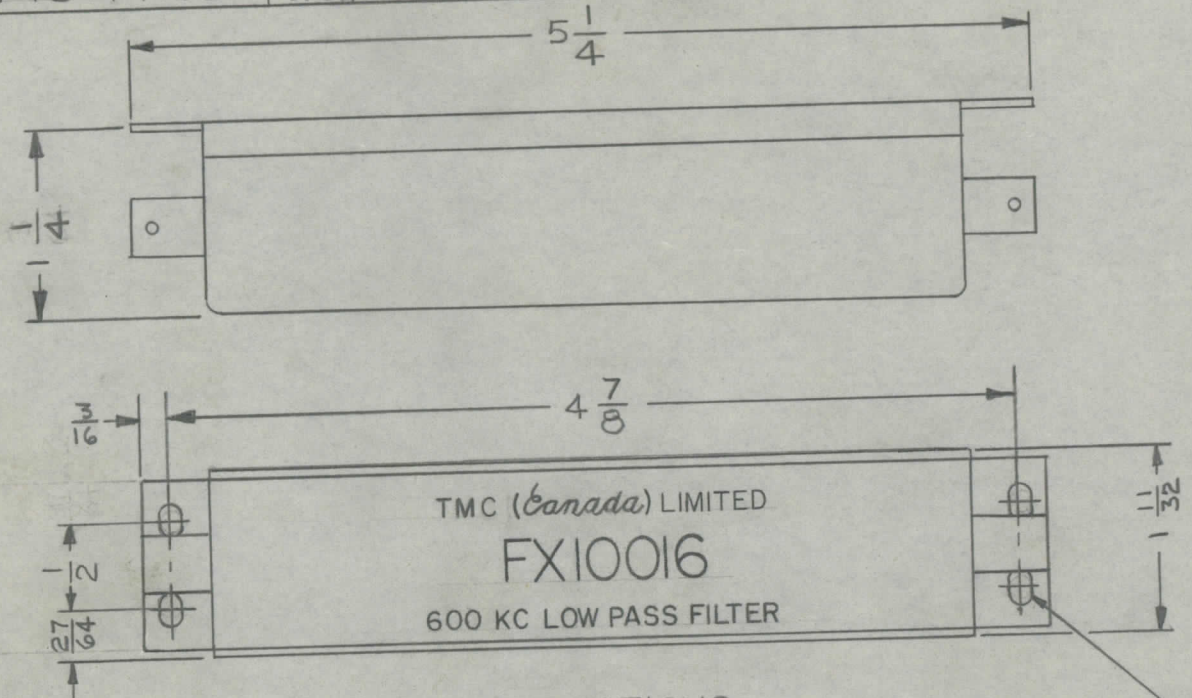
IF IT IS FOUND DESIRABLE TO CHANGE ANY TOLERANCE OR OTHER DETAIL SPECIFIED ON THIS DRAWING NOTIFY THE PURCHASER PROMPTLY.

MAXIMUM ALLOWABLE TOLERANCES HAVE BEEN DETERMINED AND DEVIATIONS WILL BE CAUSE FOR REJECTION. REMOVE ALL BURRS AND SHARP EDGES.

DIMENSIONS IN INCHES UNLESS OTHERWISE SPECIFIED

ISSUE	ITEM	CHANGED FROM	DATE	CN. NO.	DRAFTS	CHECKER	ENG. APP.
Ø		REL. TO PROD.	MAY 3/66		GM		(Signature)

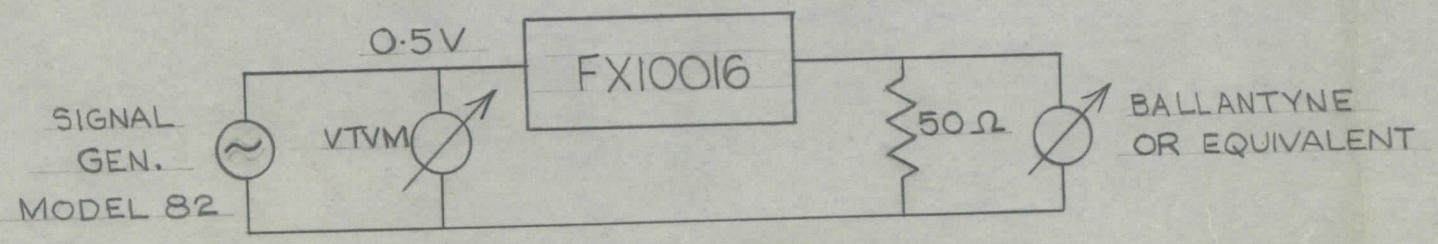
Ø
FX10016



SPECIFICATIONS

- 3db POINT - 600 Kc ± 30Kc
- 50db POINT - 800 Kc OR LESS
- RETURN LOBES - GREATER THAN -30 db
- PASSBAND RIPPLE - WITHIN 1.5 db
- INSERTION LOSS (DC-570 Kc) - 1.0db MAX.
- INPUT IMPEDANCE - 52 Ω ± 5% (TO 570 Kc)
- OUTPUT IMPEDANCE - 52 Ω ± 5% (TO 570 Kc)
- CONNECTOR SERIES - BNC
- CASE MATERIAL - COPPER
- CASE FINISH - TMC GREY, S115

1/4 x 9/64 SLOT (4 REQ.)



STOCK SIZE		TMC (Canada) LIMITED OTTAWA ONTARIO	
MATERIAL		FILTER, LOW PASS	
WEIGHT PER PC.			
TYPE & TEMPER		GAM	
HEAT TREAT. SPEC.		DRAWN (Signature)	ELEC. DES. APP. (Signature)
FINISH & SPEC. NO.		CHECKED (Signature)	MECH. DES. APP. (Signature)
		JUTASI	FINAL APPROVAL (Signature)
		FX10016 Ø	

TOLERANCES	SCALE: NTS
·X = .05	DRILL, PUNCH, COMMERCIAL STOCK
XX = .01	SIZES AND MANUFACTURERS
XXX = .005	TOLERANCES ARE NOT INCLUDED.

VLRE-1	035/66	A10465	MAY 3/66
MODEL	PROJECT NO.	ASSY. NO.	DATE
USED ON			