

STANDARD DRAWING

FU 100 C

IF IT IS FOUND DESIRABLE TO CHANGE ANY TOLERANCE OR OTHER DETAIL SPECIFIED ON THIS DRAWING NOTIFY THE PURCHASER PROMPTLY.

MAXIMUM ALLOWABLE TOLERANCES HAVE BEEN DETERMINED AND DEVIATIONS WILL BE CAUSE FOR REJECTION. REMOVE ALL BURRS AND SHARP EDGES

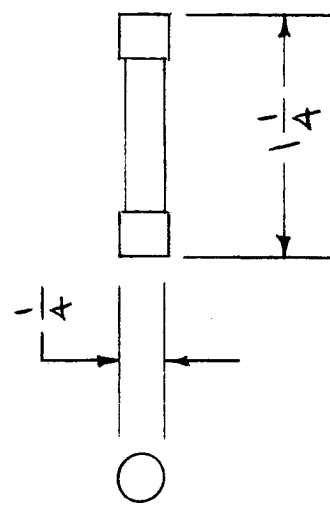
USED ON
 MODEL PROJECT NO. ASS'Y. NO. DATE

T.M.C. NO.	BUSSMAN NO.	LITTLE FUSE NO.	AMP.	VOLTS
FU 100 - .125	AGC - 1/8	312.125	1/8	250 OR LESS
- .250	- 1/4	312.250	1/4	
- .375	- 3/8	312.375	3/8	
- .500	- 1/2	312.500	1/2	
- .750	- 3/4	312.750	3/4	
- 1.0	- 1	312001.	1	
- 1.5	- 1 1/2	31201.5	1 1/2	
- 2	- 2	312002.	2	
- 3	- 3	312003.	3	
- 4	MTH - 4	312004.	4	
- 5	- 5	312005.	5	
- 6	- 6	312006.	6	
- 8	- 8	312008.	8	125 or LESS
- .032	AGC 1/32	312.032	1/32	250 OR LESS
- .062	AGC 1/16	312.062	1/16	
- .200	AGC 2/10	312.200	2/10	
- .300	AGC 3/10	312.300	3/10	
FU 100 - 30	AGC 30	311030	30	32
FU 100 - 20	AGC 20		20	32
FU 100 - 15	AGC 15	311015	15	32

ISSUE ITEM	CHANGED FROM	DATE	CN. NO.	DRAFTS CHECKER	ENG. APP.
C	ADDED FU100-20,-15	7-7-67	18383	LAK	
B	ADDED FU100-30	5-31-64	1221	ALA	
A	3 % OF RATINGS (SEE TIME CHART AND VOLTAGE COLUMN) AND TITLE N.F.F. 110.64 FU-100-.032-.062-.200-.300 ADA			AB	
-	REDRANN-NO CHANGE	6/29/54	#	C.D.P.	

TOLERANCES	
DEC. DIM. ±	DRILL, PUNCH, COMMERCIAL STOCK SIZES AND MANUFACTURERS TOLERANCES ARE NOT INCLUDED.
ALL OTHERS	ANGULAR DIM. ±

% OF RATING	BLOWTIME
110%	LIFE
135%	0-1 hr
200%	0-2 MIN



DIMENSIONS FOR REF. ONLY

DESCRIPTION	SYMBOL
THE TECHNICAL MATERIEL CORP. MAMARONECK. NEW YORK	
FUSE, CARTRIDGE	
QUICK ACTING	
C.D.P. 6-29-54	G.T.O
DRAWN	ELEC. DES. APP.
Checked	MECH. DES. APP.
Checked	FINAL APPROVAL
	FU 100 C

STANDARD DRAWING

FU-101

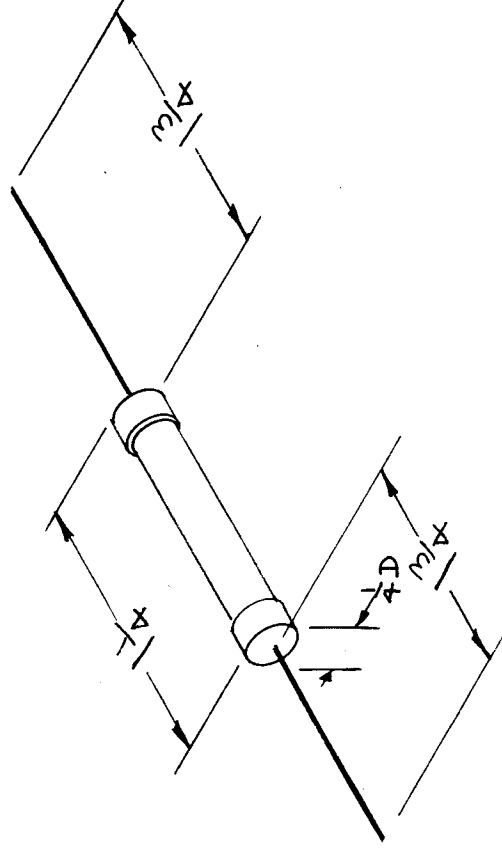
IF IT IS FOUND DESIRABLE TO CHANGE ANY TOLERANCE OR OTHER DETAIL SPECIFIED ON THIS DRAWING NOTIFY THE PURCHASER PROMPTLY.

MAXIMUM ALLOWABLE TOLERANCES HAVE BEEN DETERMINED AND DEVIATIONS WILL BE CAUSE FOR REJECTION. REMOVE ALL BURRS AND SHARP EDGES

USED ON

MODEL PROJECT NO. ASS'Y. NO. DATE

TMC NO.	BUSSMAN NO.	LITTLEFUSE NO.	AMP.
FU-101-.125	GJV - 1/8	318.125	1/8
FU-101-.250	GJV - 1/4	318.250	1/4
FU-101-.375	GJV - 3/8	318.375	3/8
FU-101-.500	GJV - 1/2	318.500	1/2
FU-101-.750	GJV - 3/4	318.750	3/4
FU-101-001.	GGJV - 1	318001.	1
FU-101-01.5	GJV -1 1/2	31801.5	1-1/2
FU-101-002.	GJV -2	318002.	2
FU-101-003.	GJV -3	318003.	3
FU-101-004.		318004.	4
FU-101-005.		318005.	5



REQ. ITEM	PART NO.	DESCRIPTION	SYMBOL
		THE TECHNICAL MATERIEL CORP. MAMARONECK, NEW YORK	
STOCK SIZE		FUSE, CARTRIDGES	
MATERIAL	WEIGHT PER PC.	WITH WIRE LEADS	
TYPE & TEMPER			
HEAT TREAT. SPEC.			
FINISH & SPEC. NO.			
DRAWN		ELEC. DES. APP.	MECH. DES. APP.
CHECKED		FINAL APPROVAL	

HAND 7-17-53
 C.O.P.
 P.M.

ISSUE ITEM	CHANGED FROM	DATE	CN. NO.	DRAFTS	CHECKER	ENG. APP.
A 1	FU-101-.001-.005 ADDED	8-20-53	1	FM		P.M.
TOLERANCES						
DEC. DIM. ±						
FRAC. DIM. ±						
ANGULAR DIM. ±						
DRILL, PUNCH, COMMERCIAL STOCK SIZES AND MANUFACTURERS TOLERANCES ARE NOT INCLUDED.						

