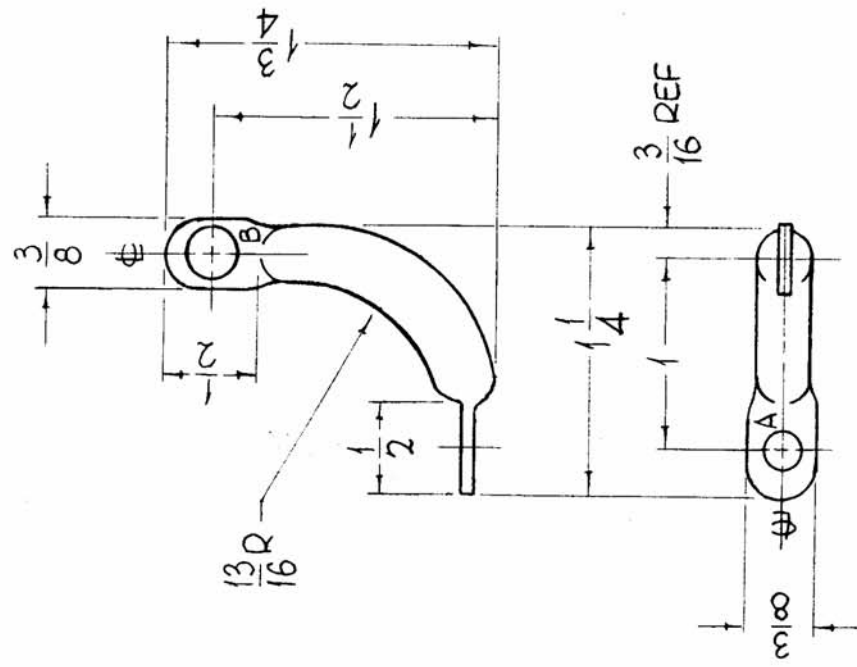


REQ. PER UNIT	USED ON	MODEL	ASSY. NO.	DATE
2		GPT-200K	AS-123	2-28-64
FP-1970				



HOLES REQ
 A - 13/64 DIA. 1
 B - 9/32 DIA. 1

REQ. ITEM	PART NO.	DESCRIPTION	SYMBOL
5/16 DIA. O.D.		F. BUDETTI	
STOCK SIZE		THE TECHNICAL MATERIEL CORP.	
COPPER, REFRIGERATION TUBING		MAMARONECK, NEW YORK	
MATERIAL		STRAP, ELECTRICAL	
SOFT		John C Biele	
TYPE & TEMPER	HEAT TREAT. SPEC.	DRAWN	CHECKED
5.245 - SILVER PLATE, BRIGHT		aa BB	aa BB
FINISH & SPEC. NO.		ELEC. DES. APP.	MECH. DES. APP.
		FP-1970	FP-1970

UNLESS OTHERWISE SPECIFIED DIMENSIONS ARE IN INCHES AND INCLUDE CHEMICALLY APPLIED OR PLATED FINISHES

TOLERANCES

FRACTIONS ± 1/64 ANGLES ± 0° 30'

DECIMALS .X ± .05 .XX ± .01 .XXX ± .005

SCALE

DATE 5.16.64

CH. NO. ASB

CHECKER

ENG. APP.