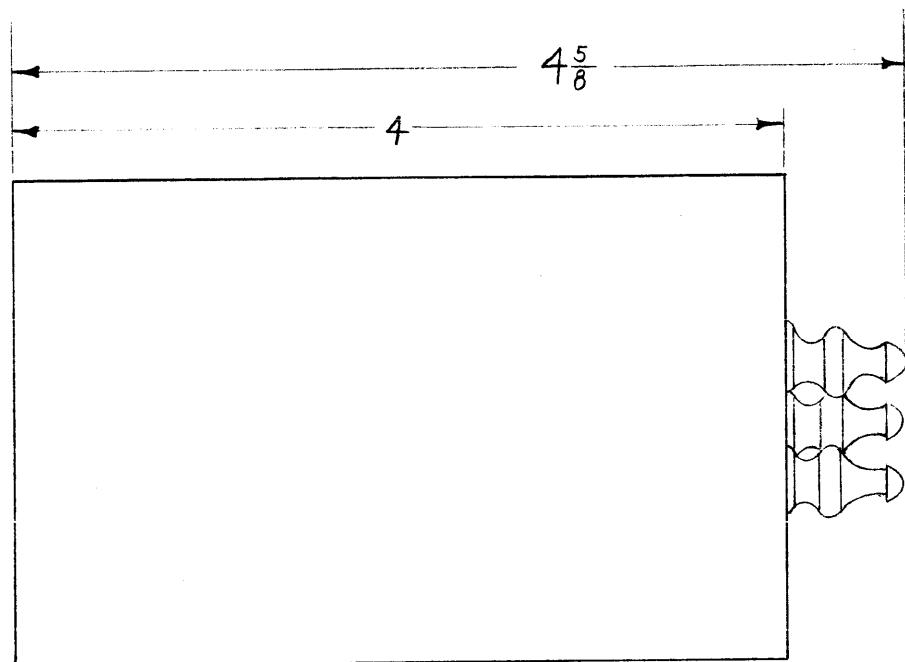


IF IT IS FOUND DESIRABLE TO CHANGE ANY TOLERANCE OR OTHER DETAIL SPECIFIED ON THIS DRAWING NOTIFY THE PURCHASER PROMPTLY.

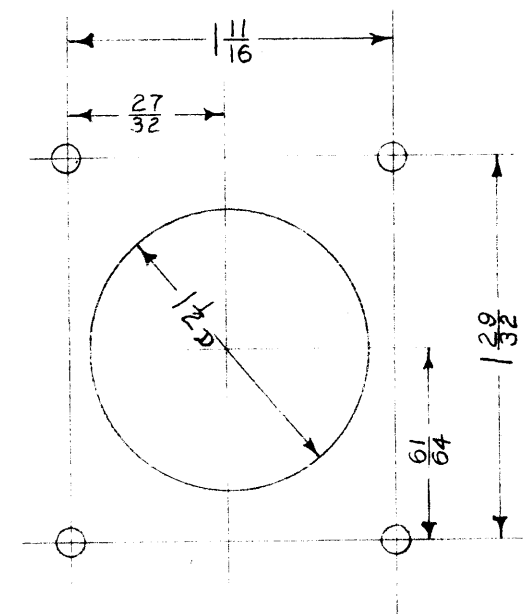
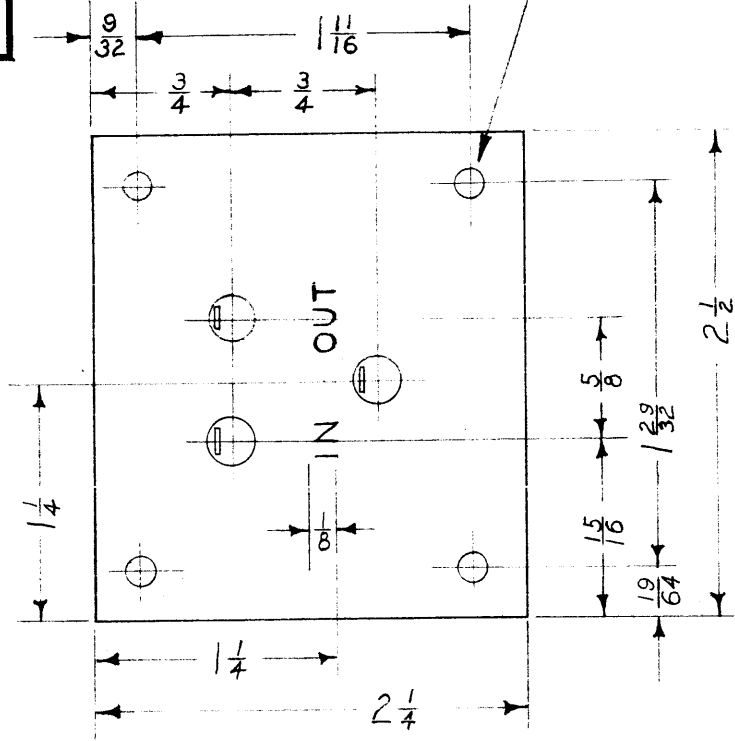
MAXIMUM ALLOWABLE TOLERANCES HAVE BEEN DETERMINED AND DEVIATIONS WILL BE CAUSE FOR REJECTION. REMOVE ALL BURRS AND SHARP EDGES

MARK WITH FI-100 AND MFG. NO.



FI-100

6-32 X 3/8 DEEP INSERTS



CHASSIS CUTOUT DETAIL

- 1. Specification:** Filter, Wide Band, Pass Band from 1700 to 3500 C.P.S., within the Band Responce must be flat within 5 D.B. Attenuation at 1500 C.P.S. and 3700 C.P.S. must be 18 D.B. respect to the center frequency, input and output impedance 600 ohms.
- 2. Terminals:** Shall be glass body, tinned lugs, and neoprene creepage band, hermetically sealed.
- 3. Case:** Shall be made of cold rolled steel, hot tinned dipped or cadmium plated.
- 4. Finish:** Shall be grey, TMC Specification S-108 the inserts and terminals shall be free of paint.
- 5. Lettering:** Shall be 1/8 inch high Gothic characters and shall be coated with clear fungicidal laquer.
- 6. Unit shall be hermetically sealed.**

Ref: Burnell and Co., Type S-10955

REQ.	ITEM	PART NO.	DESCRIPTION	SYMBOL
			THE TECHNICAL MATERIEL CORP. MAMARONECK. NEW YORK	
STOCK SIZE			FILTER; BAND PASS	
MATERIAL		WEIGHT PER PC.		
TYPE & TEMPER			C.D.D. 7-2-52	
			DRAWN	ELEC. DES. APP. MECH. DES. APP.
			J.A.D. 7-3-52	
HEAT TREAT. SPEC.			CHECKED	FINAL APPROVAL
S-108			FI-100	
FINISH & SPEC. NO.				

REDRAWN-NO CHANGE		7/24/53	F.M.	JAD	098		
ISSUE	ITEM	CHANGED FROM	DATE	CN. NO.	DRAFTS	CHECKER	ENG. APP.
TOLERANCES		SCALE:					
ALL OTHERS		DRILL, PUNCH, COMMERCIAL STOCK SIZES AND MANUFACTURERS TOLERANCES ARE NOT INCLUDED.					

BFP-1	126		7-2-52
MODEL	PROJECT NO.	ASS'Y. NO.	DATE
USED ON			