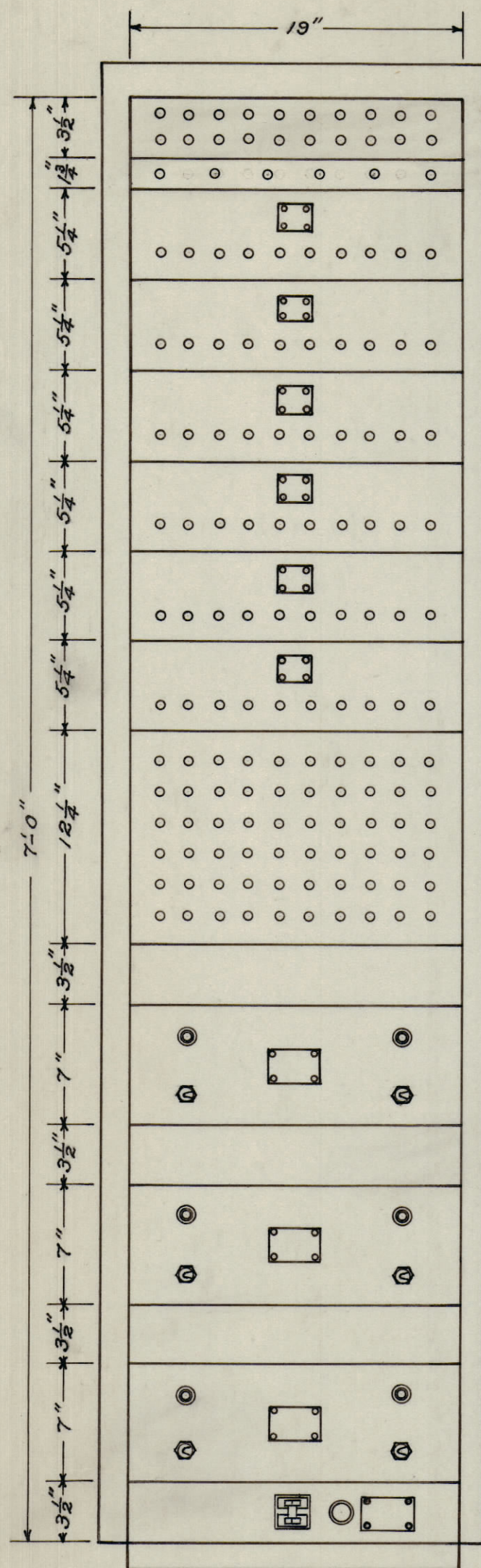


IF IT IS FOUND DESIRABLE TO CHANGE ANY TOLERANCE OR OTHER DETAIL, SPECIFIED ON THIS DRAWING NOTIFY THE PURCHASER PROMPTLY.

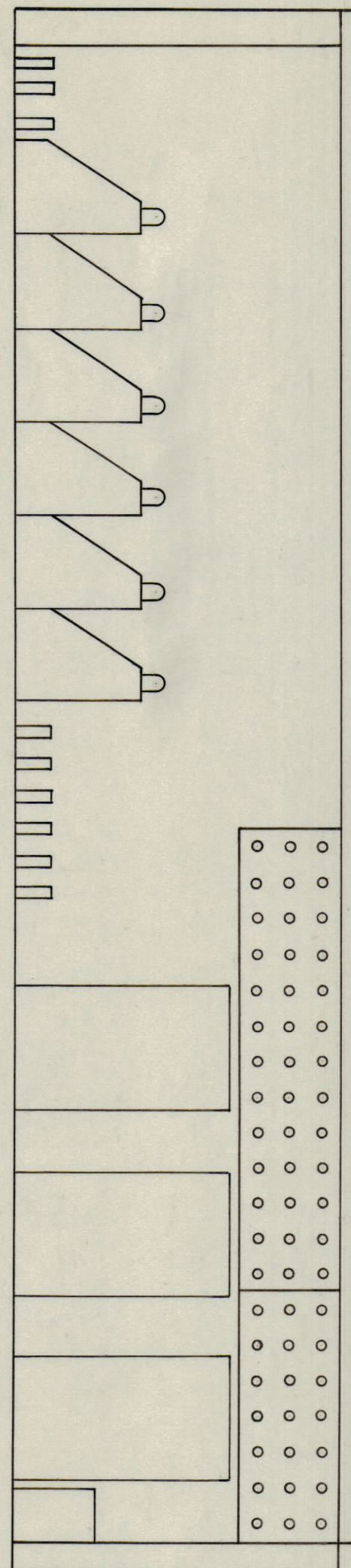
MAXIMUM ALLOWABLE TOLERANCES HAVE BEEN DETERMINED AND DEVIATIONS WILL BE CAUSE FOR REJECTION. REMOVE ALL BURRS AND SHARP EDGES

NOTICE TO PERSONS RECEIVING THIS DRAWING
 THE TECHNICAL MATERIEL CORPORATION claims proprietary right in the material disclosed hereon. This drawing is issued in confidence for engineering information only and may not be reproduced or used to manufacture anything shown hereon without permission from THE TECHNICAL MATERIEL CORPORATION to the user. This drawing is loaned for mutual assistance and is subject to recall at any time.
 Property of:
 THE TECHNICAL MATERIEL CORPORATION
 MAMARONECK, NEW YORK

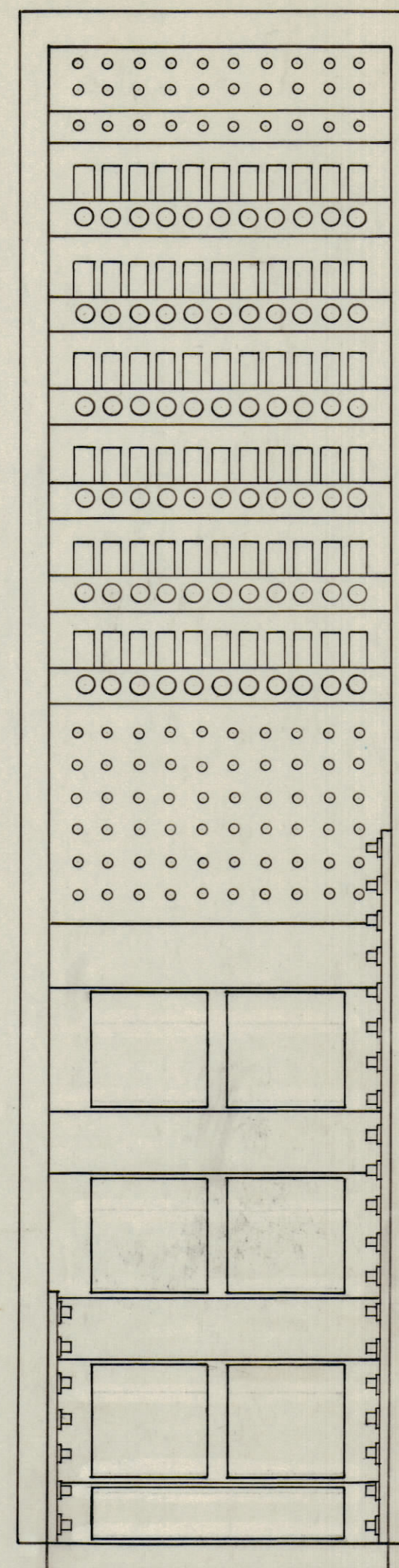


FRONT VIEW

- APP
- MIP
- AMC-10
- AMC-10
- AMC-10
- AMC-10
- AMC-10
- AMC-10
- RPP
- APU-2
- APU-2
- APU-2
- DCP-2



SIDE VIEW



REAR VIEW

- APP ANTENNA PATCHING PANEL
- MIP MULTICOUPLER INPUT PANEL
- AMC-10 ANTENNA MULTICOUPLER
- RPP RECEIVER PATCHING PANEL
- APU-2 ANTENNA MULTICOUPLER POWER UNIT
- DCP-2 POWER CONTROL PANEL

ES-10013

ISSUE	ITEM	CHANGED FROM	DATE	CN. NO.	DRAFTS	CHECKER	ENG. APP.
TOLERANCES							
ALL OTHERS				SCALE:			
DEC. DIM. ±				DRILL, PUNCH, COMMERCIAL STOCK			
FRAC. DIM. ±				SIZES AND MANUFACTURERS			
ANGULAR DIM. ±				TOLERANCES ARE NOT INCLUDED.			

MODEL	PROJECT NO.	ASS'Y. NO.	DATE
USED ON			

REQ. ITEM	PART NO.	DESCRIPTION	SYMBOL
STOCK SIZE		TMC (Canada) LIMITED OTTAWA ONTARIO	
MATERIAL		RACK MOUNTING LAYOUT	
WEIGHT PER PC.		AMC-60	
TYPE & TEMPER		DRAWN: <i>Jewer</i>	
HEAT TREAT. SPEC.		ELEC. DES. APP. <i>JER</i>	
FINISH & SPEC. NO.		MECH. DES. APP. <i>JER</i>	
		CHECKED: <i>JER</i>	
		FINAL APPROVAL	
		ES-10013	