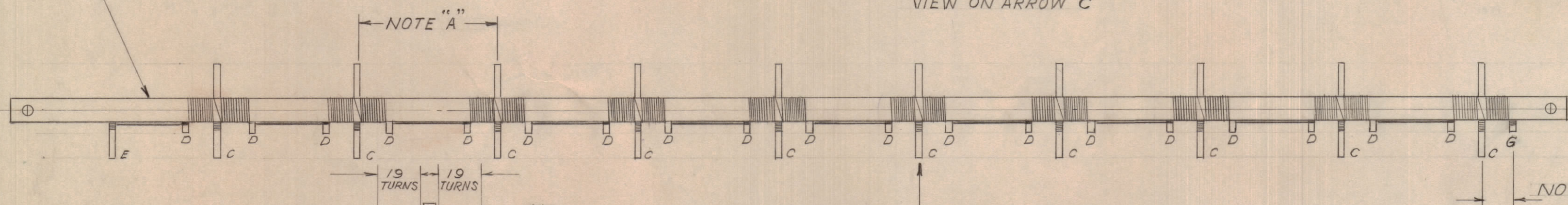
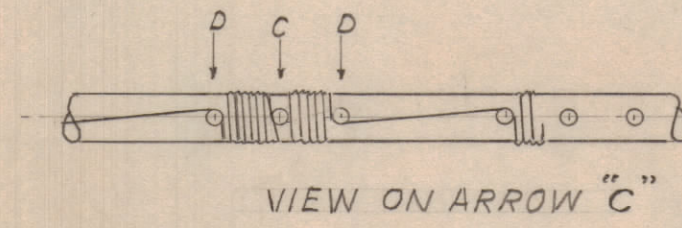
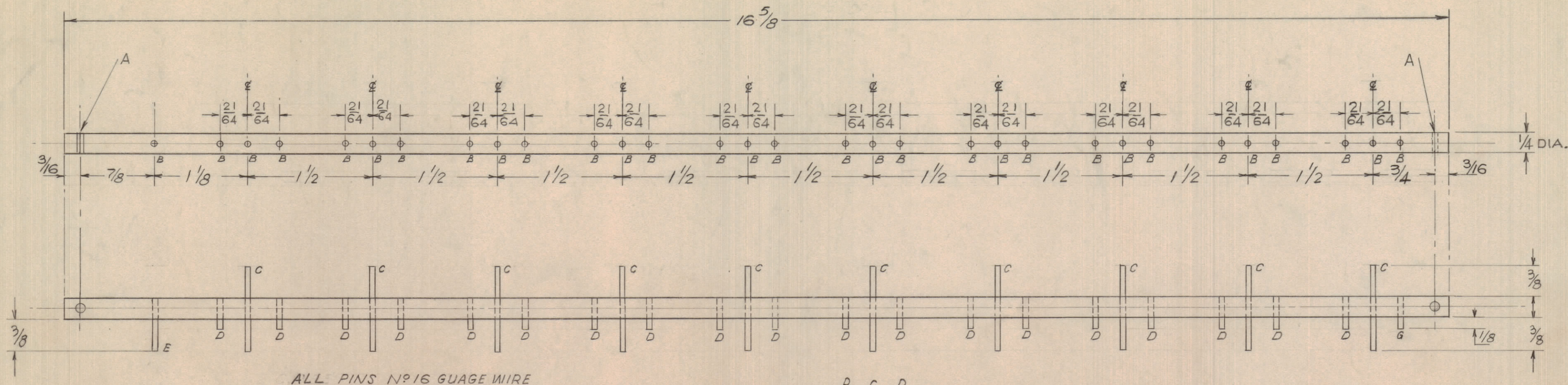


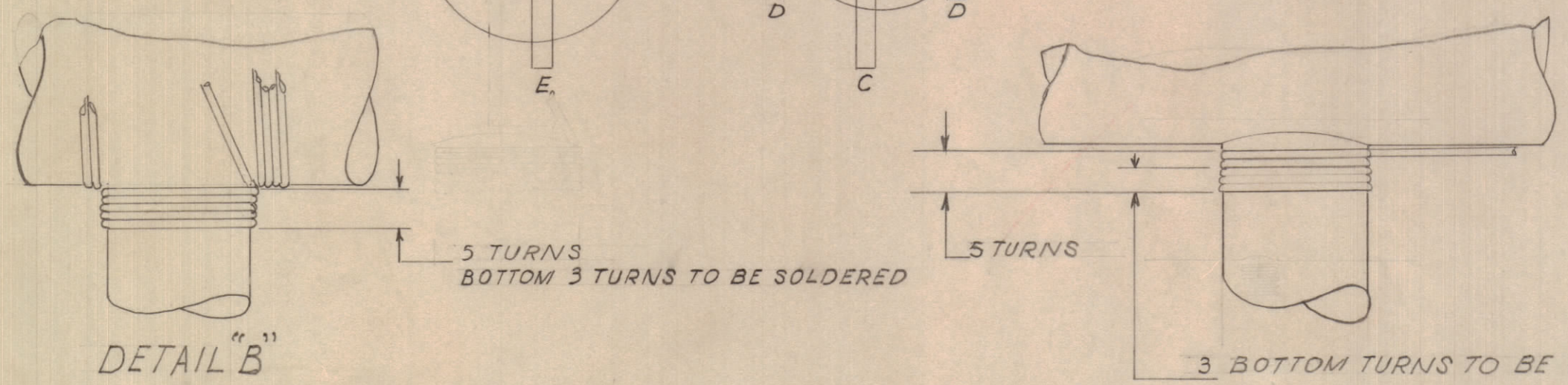
IF IT IS FOUND DESIRABLE TO CHANGE ANY TOLERANCE OR OTHER DETAIL SPECIFIED ON THIS DRAWING NOTIFY THE PURCHASER PROMPTLY.

MAXIMUM ALLOWABLE TOLERANCES HAVE BEEN DETERMINED AND DEVIATIONS WILL BE CAUSE FOR REJECTION. REMOVE ALL BURRS AND SHARP EDGES



NOTE:
 • WRAP WIRE TIGHTLY 5 TIMES AROUND PINS C, E & G.
 • SOLDER FIRST 3 TURNS IN SUCH A WAY AS TO ENSURE THAT THE INSULATION ON THE WIRE OF THE LAST TWO TURNS WILL NOT BE DAMAGED.

NOTE A- $3.1\mu h \pm .1\mu h$
 " B- $1.5\mu h \pm .1\mu h$



HOLE SIZES	
A	DRILL N° 33 (.113)
B	DRILL N° 55 (.052)

REQ.	ITEM	PART NO.	DESCRIPTION	SYMBOL
2	G		PIN N°16 GAUGE x 3/8 LONG	
A/R	H	WI-10002-2	WIRE N°28 GAUGE HEAVY SOLDERETZE	
10	C		PIN N°16 GAUGE WIRE x 1" LONG	
20	D		PIN N°16 GAUGE WIRE x 3/8 LONG	
1	E		PIN. N°16 GAUGE WIRE x 3/8 LONG	
1	I	DL-10007	DELAY LINE	

REQ. ITEM		PART NO.	DESCRIPTION	SYMBOL
ITI-1/4 OD. ROD			TMC (Canada) LIMITED OTTAWA ONTARIO	
ITI-TUFNOL				DELAY LINE DA101
MATERIAL		WEIGHT PER PC.		
TYPE & TEMPER			W.H. DAVISON	
HEAT TREAT. SPEC.			U. Ker	
FINISH & SPEC. NO.			U. Ker	
			171-LACQUERAFTER MACH.	
			FINAL APPROVAL	

ISSUE	ITEM	CHANGED FROM	DATE	CN. NO.	DRAFTS	CHECKER	ENG. APP.
A		DA101 WAS LMC10	4/1/60		JPC	U. Ker	M. Ker

TOLERANCES: SCALE: 1:1

ALL OTHERS: DEC. DIM. ±, FRAC. DIM. ±, ANGULAR DIM. ±

DRILL, PUNCH, COMMERCIAL STOCK SIZES AND MANUFACTURERS TOLERANCES ARE NOT INCLUDED.

MODEL	PROJECT NO.	ASS'Y. NO.	DATE
DA101	CE-5107		5 AUG 1960

USED ON

DL-10007 A