

IF IT IS FOUND DESIRABLE TO CHANGE ANY TOLERANCE OR OTHER DETAIL SPECIFIED ON THIS DRAWING NOTIFY THE PURCHASER PROMPTLY.

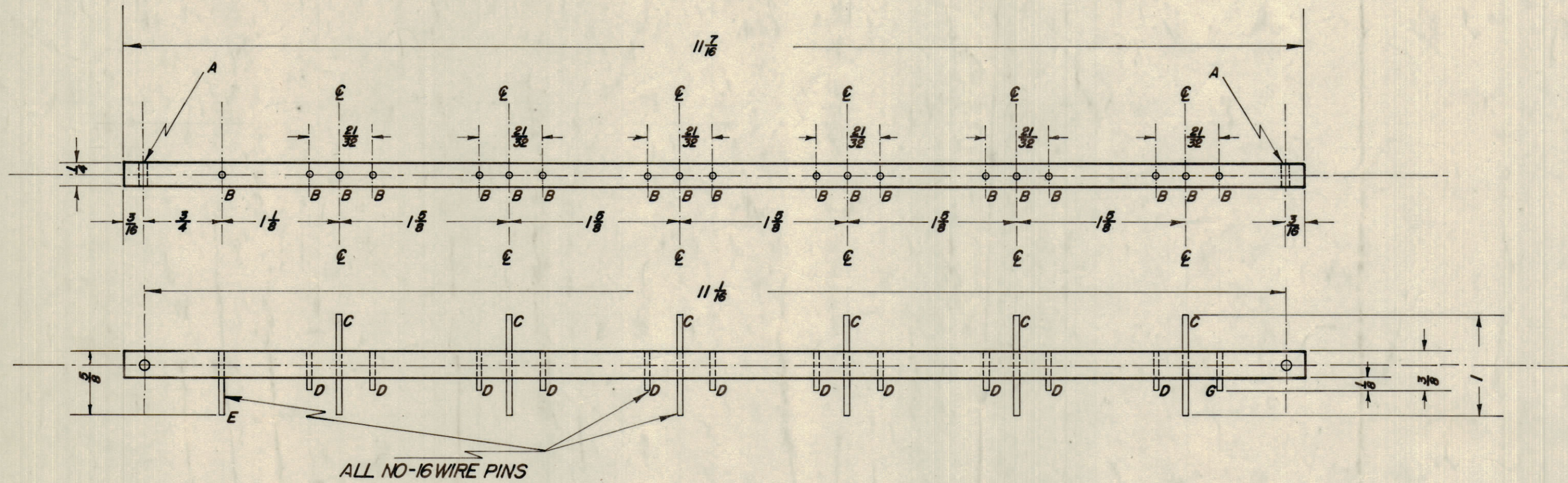
MAXIMUM ALLOWABLE TOLERANCES HAVE BEEN DETERMINED AND DEVIATIONS WILL BE CAUSE FOR REJECTION. REMOVE ALL BURRS AND SHARP EDGES

**NOTICE TO PERSONS RECEIVING THIS DRAWING**

THE TECHNICAL MATERIEL CORPORATION claims proprietary right in the material disclosed hereon. This drawing is issued in confidence for engineering information only and may not be reproduced or used to manufacture anything shown hereon without permission from THE TECHNICAL MATERIEL CORPORATION to the user. This drawing is loaned for mutual assistance and is subject to recall at any time.

Property of:  
THE TECHNICAL MATERIEL CORPORATION  
MAMARONECK, NEW YORK

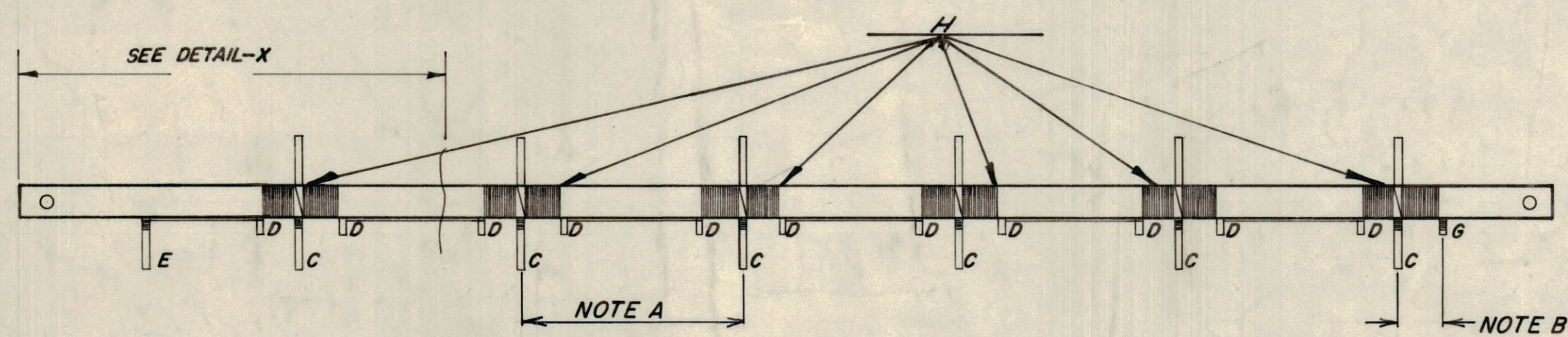
DELAY LINE-AMC 6/5



DL-10006-1  
MECHANICAL DETAIL

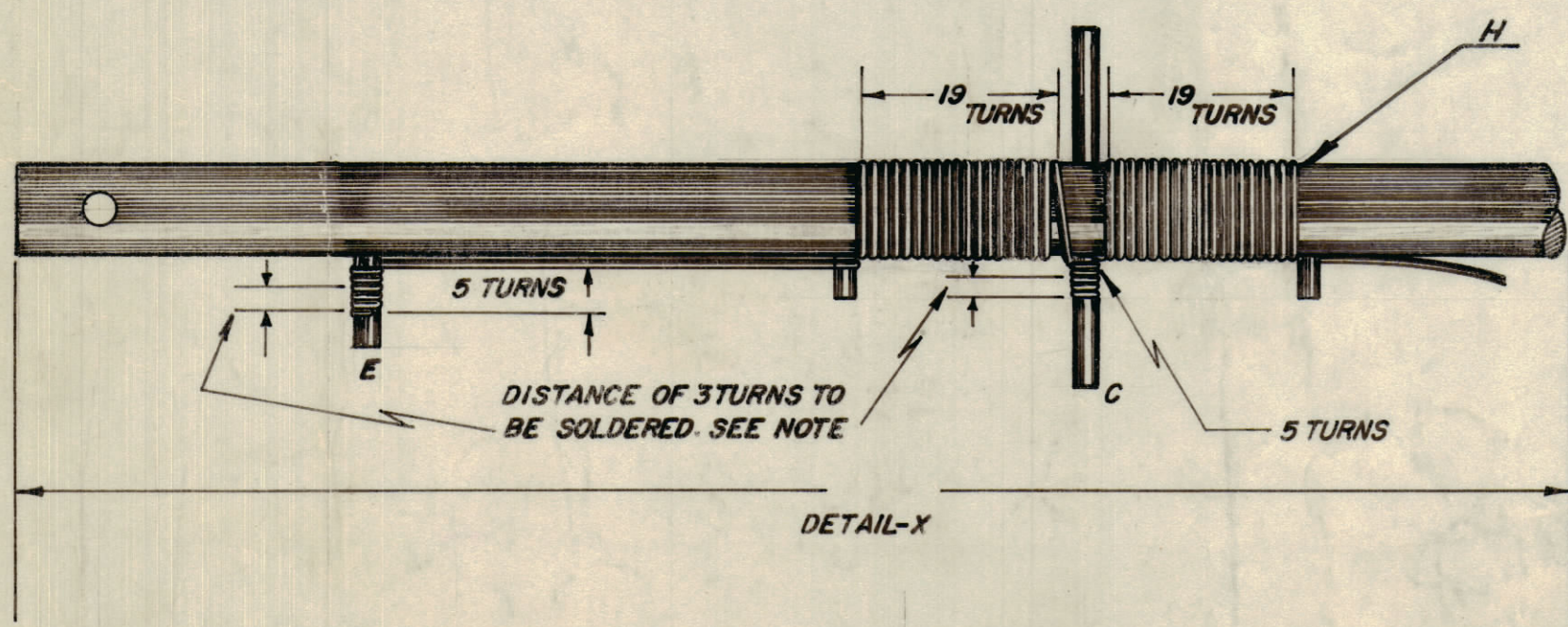
DL-10006-2  
PIN MOUNTING

ALL NO-16 WIRE PINS



DL-10006-3  
WINDING LAYOUT

NOTE A- $3.1\mu h \pm .1\mu h$   
NOTE B- $1.5\mu h \pm .1\mu h$



NOTE: WRAP WIRE TIGHT 5 TIMES AROUND PIN-C PIN-E, PIN-G AND SOLDER FIRST 3 TURNS CAREFULLY, SO THAT INSULATION ON WIRE OF LAST TWO TURNS WILL NOT BE BURNED.

REQ.	ITEM	PART No.	DESCRIPTION	SYMBOL
	H	WI-10002-2	MAGNET WIRE, SOLDEREZE	
	1	G	WL-100-4	PIN-G 3/8" LNG.
	6	C	" " "	PIN-C 1" "
	12	D	" " "	PIN-D 3/8" "
	1	E	" " "	PIN-E 5/8" "
	19	B		HOLES DRILL NO-55 (.052)
	2	A		" " " 33 (.113)
	1	I		DELAY LINE

1/4 O.D. ROD		TMC (Canada) LIMITED	
STOCK SIZE		OTTAWA ONTARIO	
IT1-TUFNOL		DELAY LINE AMC-6/5	
MATERIAL WEIGHT PER PC.		MODEL - DL-10 006A	
TYPE & TEMPER		M. Kramer M. Kramer M. Kramer	
HEAT TREAT. SPEC.		DRAWN ELEC. DES. APP. MECH. DES. APP.	
IT1-LACQUER AFTER MACH		CHECKED FINAL APPROVAL	
FINISH & SPEC. No.		DL-10 006 A	

3	STAGE PART NOS ADDED	3-	83				
2	ITEM(G) WAS NO-16 WIRE	4-	82				
1	ITEM(H) WAS NO-28 WIRE	63	82				
ISSUE	ITEM	CHANGED FROM	DATE	CN. NO.	DRAFTS	CHECKER	ENG. APP.
TOLERANCES			SCALE: 1:1				
ALL OTHERS	DEC. DIM. $\pm$ FRAC. DIM. $\pm$ 1/64		DRILL, PUNCH, COMMERCIAL STOCK SIZES AND MANUFACTURERS TOLERANCES ARE NOT INCLUDED.				

MODEL	PROJECT No.	ASS'Y. No.	DATE
			Jan. 7. 59
USED ON			

A DL-10 006A