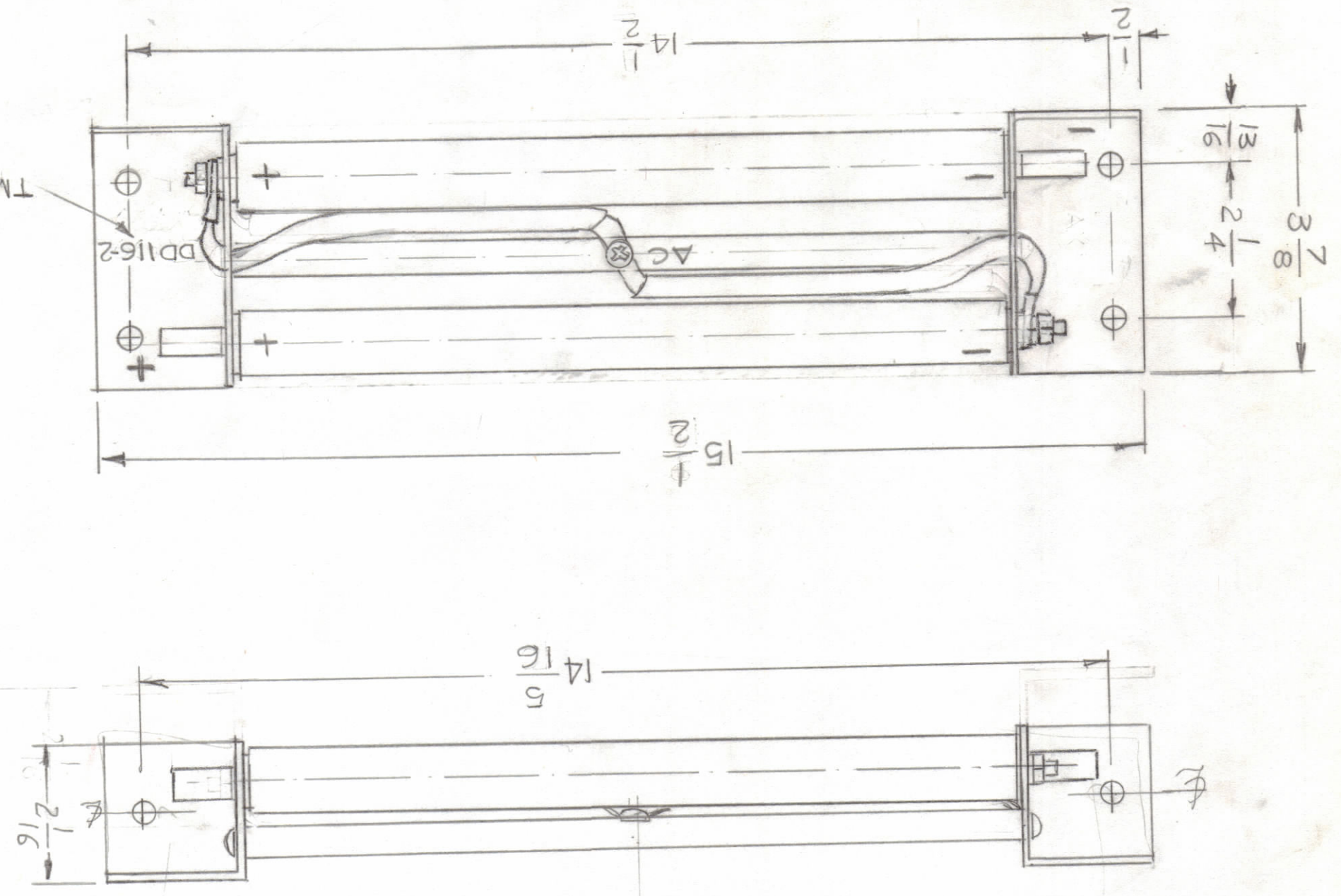
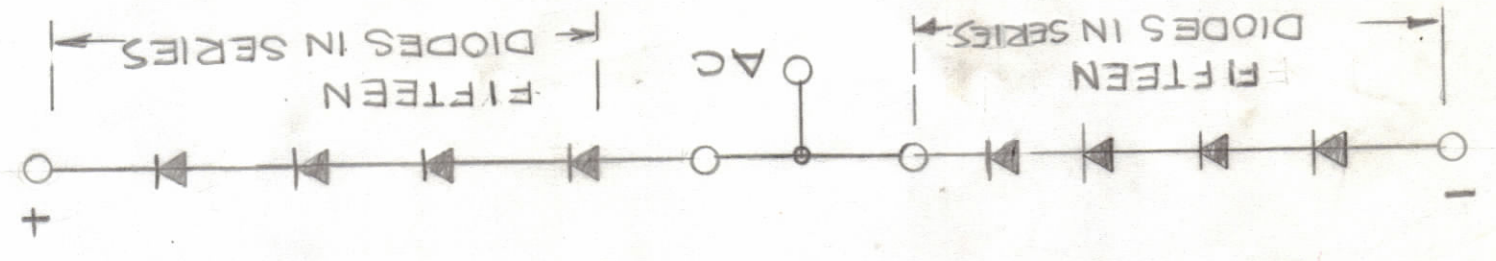


NOTICE TO PERSONS RECEIVING THIS DRAWING
 THE TECHNICAL MATERIEL CORPORATION claims proprietary right in the materiel disclosed herein. This drawing is issued in confidence for engineering information only and may not be reproduced or used to manufacture anything shown hereon without permission from THE TECHNICAL MATERIEL CORPORATION.

to the user. This drawing is loaned for mutual assistance and is subject to recall at any time.

KIT450		QTY / UNIT	3
AVRC-1		MODEL USED ON	3
AX799		ASSY NO.	3

SCHEMATIC DIAGRAM



UNLESS OTHERWISE SPECIFIED DIMENSIONS ARE IN INCHES AND INCLUDE CHEMICALLY APPLIED OR PLATED FINISHES	
DECIMALS	± 0.05
FRACTIONS	± 1/64
ANGLES	± 0.30°
XXX ± .005	
XX ± .01	
X ± .05	

QTY REQ.	ITEM	PART NO.	DESCRIPTION	SYMBOL
----------	------	----------	-------------	--------

LIST OF MATERIAL

DATE	MECH. DES.	DATE	ELECT. DES.	DATE	CHECKED	DATE	DRAWN	DATE	
							G.D.L.	9-14-79	
FINAL APPROVAL		MAMARONECK, NEW YORK		RECTIFIER, SEMICONDUCTOR		DEVICE		C 82679	
THE TECHNICAL MATERIEL CORP.		MAMARONECK, NEW YORK		RECTIFIER, SEMICONDUCTOR		DEVICE		C 82679	
MAMARONECK, NEW YORK		MAMARONECK, NEW YORK		RECTIFIER, SEMICONDUCTOR		DEVICE		C 82679	
MAMARONECK, NEW YORK		MAMARONECK, NEW YORK		RECTIFIER, SEMICONDUCTOR		DEVICE		C 82679	

SPECIFICATIONS

- 1- TYPE DOUBLER (AVALANCHE DIODES)
- 2- NO. OF CIRCUIT LEGS TWO WITH 15 DIODES PER LEG
- 3- MAX. PEAK REVERSE WORKING VOLTAGE EACH LEG 15KV
- 4- MAX PEAK REVERSE CURRENT AT RATED PRV (TA50°C) 2MA
- 5- MAX AVERAGE RECTIFIED @ 50°C 2.8A NATURAL CONVECTION
- 6- PEAK FORWARD SURGE @ 60 CPS 400AMPS
- 7- MAX FULL LOAD FORWARD VOLTAGE DROP FULL CYCLE AVERAGE @ IDC = 4A TA=25°C 18VOLTS
- 8- OPERATING TEMP RANGE -55°C TO +125°C
- 9- STORAGE TEMP -55°C TO +71°C
- 10- MODULE PART NO. AX 799
- 11- MARKING: TMC P/NO. 1/8 HIGH GOTHIC AS SHOWN.

(DD16-2 Replaces DD16)

NOTE: PARTS AND ASSEMBLY INFORMATION TO BE LOCATED ON DRAWING AX799

REVISIONS	DATE	E.M.N.O	DRAFT	CHKD	APPD
See Sheet 2	9-6-79	M.A.D.			