

TABLE 1

TYPE DESIGNATION*	CAPACITANCE	DC WORKING VOLTAGE	CAPACITANCE TOLERANCES AVAILABLE
	uuf	Volts	(+)
CY10COR5C	0.5	500	C
CY10C1R0C	1.0	500	C
CY10C1R5C	1.5	500	C
CY10C2R2-	2.2	500	CD
CY10C2R7C	2.7	500	C
CY10C3R0-	3.0	500	CD
CY10C3R3C	3.3	500	C
CY10C3R6-	3.6	500	CD
CY10C3R9C	3.9	500	C
CY10C4R3-	4.3	500	CD
CY10C4R7C	4.7	500	C
CY10C5R1C	5.1	500	C
CY10C5R6-	5.6	500	CJ
CY10C6R2-	6.2	500	CJ
CY10C6R8-	6.8	500	CJ
CY10C7R5-	7.5	500	CJ
CY10C8R2-	8.2	500	CJ
CY10C9R1-	9.1	500	CJ
CY10C100-	10	500	CJ
CY10C110-	11	500	CJ
CY10C120-	12	500	CJ
CY10C130-	13	500	GJ
CY10C150-	15	500	GJ
CY10C160-	16	500	GJ
CY10C180-	18	500	GJ
CY10C200-	20	500	GJ
CY10C220-	22	500	GJ
CY10C240-	24	500	GJ
CY10C270-	27	500	FGJ
CY10C300-	30	500	FGJ
CY10C330-	33	500	FGJ
CY10C360-	36	500	FGJ
CY10C390-	39	500	FGJ
CY10C430-	43	500	FGJ
CY10C470-	47	500	FGJ
CY10C510-	51	500	FGJ
CY10C560-	56	500	FGJ
CY10C620-	62	500	FGJ
CY10C680-	68	500	FGJ
CY10C750-	75	500	FGJ
CY10C820-	82	500	FGJ
CY10C910-	91	500	FGJ
CY10C101-	100	500	FGJ
CY10C111-	110	500	FGJ
CY10C121-	120	500	FGJ
CY19C131-	130	500	FGJ
CY10C151-	150	500	FGJ
CY10C161-	160	500	FGJ
CY10C181-	180	500	FGJ
CY10C201-	200	500	FGJ
CY10C221-	220	300	FGJ
CY10C241-	240	300	FGJ
CY10C271-	270	300	FGJ
CY10C301-	300	300	FGJ

\* Complete Type Designation will include an additional letter symbol to indicate capacitance tolerance, where applicable.

TABLE 2

Symbol	Capacitance Tolerance (+)
C	0.25 uuf
D	0.50 uuf
F	1 %
G	2 %
J	5 %

TABLE 3

Symbol	Operating Temperature Range °C
C	-55 to +125

COLOR*	OPERATING TEMPERATURE RANGE	NOMINAL CAPACITANCE (uuf)		CAPACITANCE TOLERANCE (+)
		FIRST and SECOND SIGNIFICANT FIGURES	MULTIPLIER**	
Black	-	0	1	-
Brown	-	1	10	1 % (F)
Red	C	2	100	2 % (G)
Orange	-	3	1,000	-
Yellow	-	4	-	-
Green	-	5	-	0.5 uuf (D)
Blue	-	6	-	-
Purple (Violet)	-	7	-	-
Gray	-	8	-	0.25 uuf (C)
White	-	9	-	-
Gold	-	-	0.1	5 % (J)
Silver	-	-	-	-

\* The MIL Identifier shall be a Black Dot.  
 \*\* The Multiplier is the Factor by which the Two Significant Figures are Multiplied to Yield the Nominal Capacitance.

TEMPERATURE COEFFICIENT AND CAPACITANCE DRIFT	
TEMPERATURE COEFFICIENT	CAPACITANCE DRIFT (-55° to +125°C)
Parts/million/°C 140 ± 25	0.1 percent or 0.1 uuf, whichever is greater.

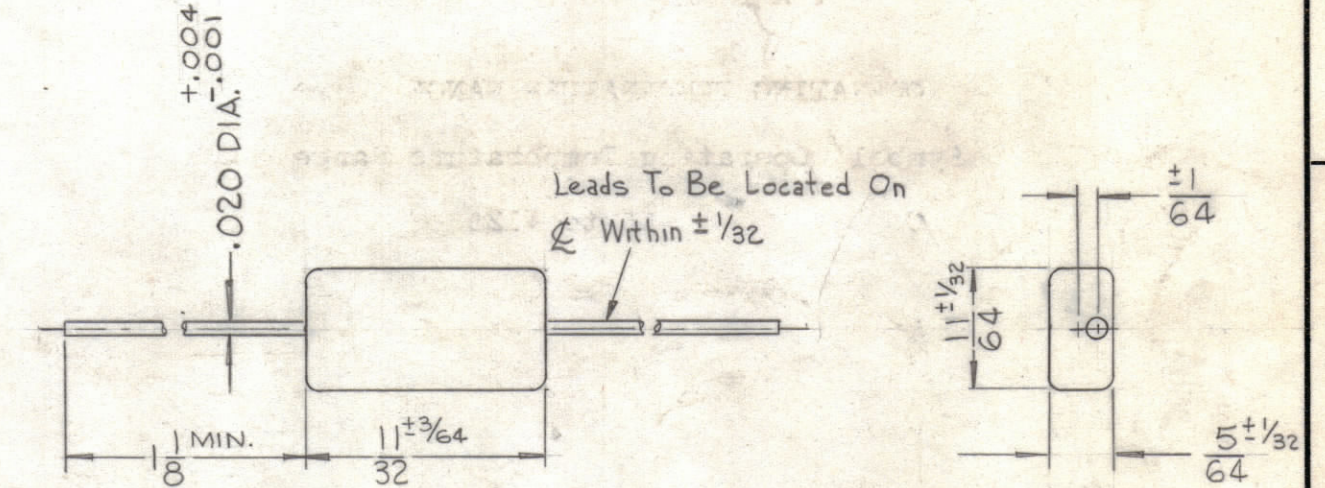
STANDARD DRAWING

CY-10 B

NOTICE TO PERSONS RECEIVING THIS DRAWING

THE TECHNICAL MATERIEL CORPORATION claims proprietary right in the material disclosed herein. This drawing is issued in confidence for engineering information only and may not be reproduced or used to manufacture anything shown hereon without permission from THE TECHNICAL MATERIEL CORPORATION to the user. This drawing is loaned for practical assistance and is subject to recall at any time.

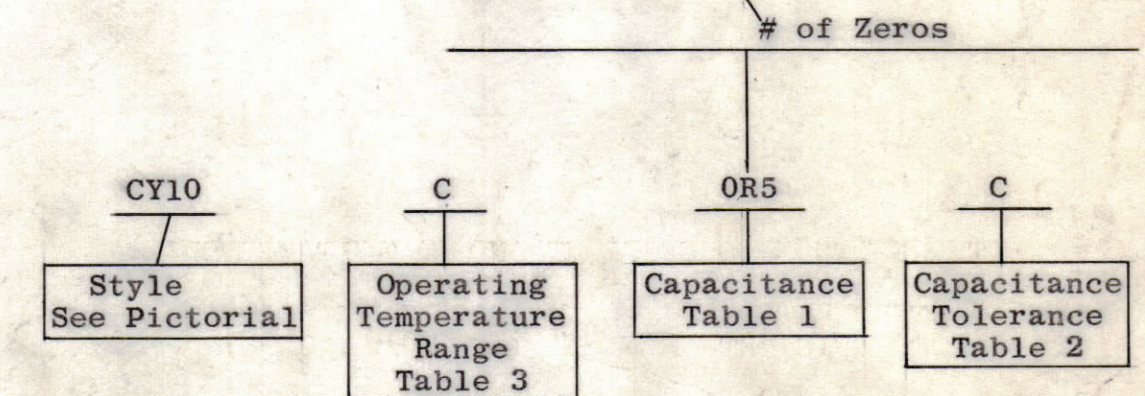
Property of:  
 THE TECHNICAL MATERIEL CORPORATION  
 MAMARONECK, NEW YORK



NOTE 1: FOR NON-STANDARD VALUES AND/OR TOLERANCES (THOSE NOT SHOWN IN TABLE 1) ADD YY TO PART NUMBER  
 EXAMPLE: CY10C140FFYY

NOTE 2: SHALL BE IN ACCORDANCE WITH THE LATEST REVISION OF MIL-C-11272/1 EXCEPT GOVERNMENT SOURCE INSPECTION SHALL NOT BE REQUIRED. MIL IDENTIFIER SHALL BE DELETED ON THOSE ITEMS WITH A YY SUFFIX TO PART NUMBER

NOTE 3: FOR NON-STANDARD VALUES WHICH CANNOT BE EXPRESSED IN THREE DIGITS, FOUR DIGITS WILL BE USED  
 Example: 1060 = 106 uuf



SYM	ZONE	DESCRIPTION	DATE	CH. NO.	DRAFTS	CHECKER	ENG. APP.
B		ADD. NOTES 1 & 2 MARK EXISTING NOTE 3	12-29-66	175B1	RME		
A	F7	CY10C130 WAS CY10C120	11/7/63	10331			

UNLESS OTHERWISE SPECIFIED:  
 DIMENSIONS ARE IN INCHES  
 TOLERANCES ON FRACTIONS ± 1/64 DECIMALS ± .005 ANGLES ± 1/2°

SCALE: MAXIMUM ALLOWABLE TOLERANCES HAVE BEEN DETERMINED AND ANY DEVIATIONS WILL BE CAUSE FOR REJECTION. REMOVE ALL BURRS & SHARP EDGES

REQ. PER UNIT	MODEL	SECTION	ASS'Y. NO.	DATE
	HFS-1			3-21-62

REQ. ITEM	PART NO.	DESCRIPTION	SYMBOL
		THE TECHNICAL MATERIEL CORP. MAMARONECK, NEW YORK	
	STOCK SIZE	CAPACITORS, FIXED, GLASS DIELECTRIC	
	MATERIAL		
	TYPE & TEMPER	HEAT TREAT. SPEC.	
	FINISH & SPEC. NO.	ELEC. DES. APP. MECH. DES. APP.	

DRAWN: E.E. CHECKED: H.H. FINAL APPROVAL: B.P.  
 CY-10 B