

C1 CASE SIZE \*3/16" X 11/16"

Table with columns: Volts DC, Type, Plain Foil Mfds., Catalog No., DC Leakage Current, Impedance Max. at -55C, Etched Foil Mfds., DC Leakage Current, Impedance Max. at -55C. Rows include various capacitor models like TEF10-3C1, TEF8-6C1, etc.

C2 CASE SIZE \*9/32 X 7/8"

Table with columns: Volts DC, Type, Plain Foil Mfds., Catalog No., DC Leakage Current, Impedance Max. at -55C, Etched Foil Mfds., DC Leakage Current, Impedance Max. at -55C. Rows include various capacitor models like TEF55-3C2, TEF35-6C2, etc.

C3 CASE SIZE \*3/8" X 1-7/16"

Table with columns: Volts DC, Type, Plain Foil Mfds., Catalog No., DC Leakage Current, Impedance Max. at -55C, Etched Foil Mfds., DC Leakage Current, Impedance Max. at -55C. Rows include various capacitor models like TEF160-3C3, TEF100-6C3, etc.

C4 CASE SIZE \*3/8 X 2-1/8"

Table with columns: Volts DC, Type, Plain Foil Mfds., Catalog No., DC Leakage Current, Impedance Max. at -55C, Etched Foil Mfds., DC Leakage Current, Impedance Max. at -55C. Rows include various capacitor models like TEF350-3C4, TEF200-6C4, etc.

C5 CASE SIZE \*3/8 X 2-3/4"

Table with columns: Volts DC, Type, Plain Foil Mfds., Catalog No., DC Leakage Current, Impedance Max. at -55C, Etched Foil Mfds., DC Leakage Current, Impedance Max. at -55C. Rows include various capacitor models like TEF440-3C5, TEF300-6C5, etc.

REVISIONS table with columns: ZONE, LTR, DESCRIPTION, DATE, E.M.N.O, DRAFT, CHKD, APPD. Includes revision X for 'EXPERIMENTAL RELEASE' and ORIGINAL RELEASE FOR PRODUCTION.

SPECIFICATIONS

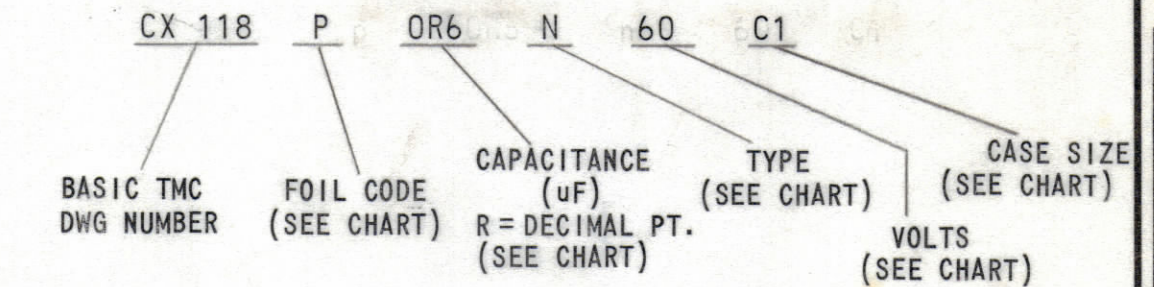
THE CAPACITANCE TOLERANCE: ±20% FOR PLAIN FOIL ELECTRODES, FOR ETCHED FOIL ELECTRODES, IT IS AS FOLLOWS:

AT 100-150 VOLTS: -15 TO +30%
AT 50- 99 VOLTS: -15 TO +50%
AT 0- 49 VOLTS: -15 TO +75%

TEMPERATURE RANGE: -55°C TO +85°C

CONSTRUCTION: ANODE AND CATHODE OF TANTALUM FOIL.

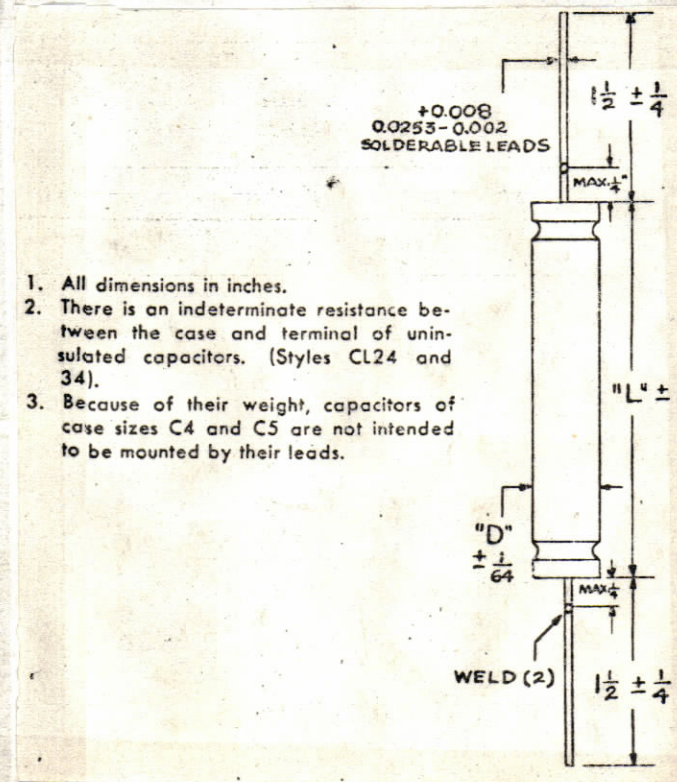
TMC PART NUMBER SHALL BE IN THE FOLLOWING FORMAT:



FOIL CODE CHART table with columns: CODE, DESCRIPTION. Codes: P (PLAIN FOIL), E (ETCHED FOIL).

TYPE CODE CHART table with columns: CODE, DESCRIPTION. Codes: P (POLARIZED), N (NON-POLARIZED).

NOTE: NON POLAR. UNITS MUST BE INSULATED FROM GROUND WHEN ONE LEAD IS GROUNDED



- 1. All dimensions in inches.
2. There is an indeterminate resistance between the case and terminal of uninsulated capacitors.
3. Because of their weight, capacitors of case sizes C4 and C5 are not intended to be mounted by their leads.

APPLICATION form with fields: QTY / UNIT, MODEL USED ON, ASS'Y NO., CODE, MATERIAL, FINISH. Includes a notice to persons receiving this drawing.

LIST OF MATERIAL form with columns: QTY. REQ., ITEM, PART NO., DESCRIPTION, SYMBOL. Includes fields for FINAL APPROVAL, MECH. DES., ELECT. DES., CHECKED, DRAWN, DATE, and a table for CAPACITOR, TANTALUM FOIL.