

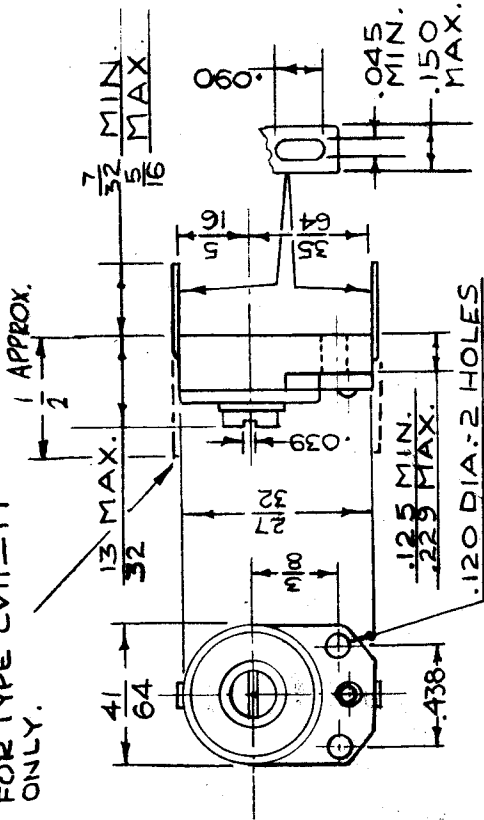
# STANDARD DRAWING

CVII

IF IT IS FOUND DESIRABLE TO CHANGE ANY TOLERANCE OR, OTHER DETAIL SPECIFIED ON THIS DRAWING NOTIFY THE PURCHASER PROMPTLY.

MAXIMUM ALLOWABLE TOLERANCES HAVE BEEN DETERMINED AND DEVIATIONS WILL BE CAUSE FOR REJECTION. REMOVE ALL BURRS AND SHARP EDGES

TERMINAL LOCATION FOR TYPE CVII-YY ONLY.



SY II A 070 YY  
COMPONENT STYLE CHAR. CAP.

INDICATES A NON MILITARY ITEM WITH RESPECT TO TERMINAL STYLE, BUT MEETS ALL OTHER SPECIFICATIONS.

B	6	1/2 DIM. ADDED, YY ADDED.	7-17-61	11887	SEB	@
	5	ADDED TOLERANCES .090 DIM				
	4	ADDED CVIID300 & D450				
	3	REF MIL-C-81A WAS JAN-C-81				
	2	DELETED CHICAGO C250 D750 D500				
	1	DELETED TEMP. COEF. CHART				

ISSUE ITEM	CHANGED FROM	DATE	CN. NO.	DRAFTS	CHECKER	ENG. APP.
TOLERANCES						
DEC. DIM.	± .010					
FRAC. DIM.	± 1/32					
ANGULAR DIM.	±					
SCALE						
DRILL, PUNCH, COMMERCIAL STOCK SIZES AND MANUFACTURERS TOLERANCES ARE NOT INCLUDED.						

MODEL		PROJECT NO.		USED ON		ASSY. NO.	
TYPE DESIGNATION	CHARACTERISTIC LETTER	RATED TEMPERATURE COEFFICIENT	PARTS/MILLION/°C	MINIMUM	MAXIMUM	CAPACITANCE	
CVIIA070	A	0	0	1.5	7.0	μf	
CVIIA120	A	0	0	3.0	12.0	μf	
CVIIA250	A	0	0	4.5	25.0	μf	
CVIIB130	B	-300	-300	3.0	13.0	μf	
CVIIB200	B	-300	-300	5.0	20.0	μf	
CVIIC300	C	-500	-500	4.0	30.0	μf	
CVIIC450	C	-500	-500	7.0	45.0	μf	
CVIID060	D	-650	-650	2.0	6.0	μf	
CVIID300	D	-650	-650	4.0	30.0	μf	
CVIID450	D	-650	-650	7.0	45.0	μf	

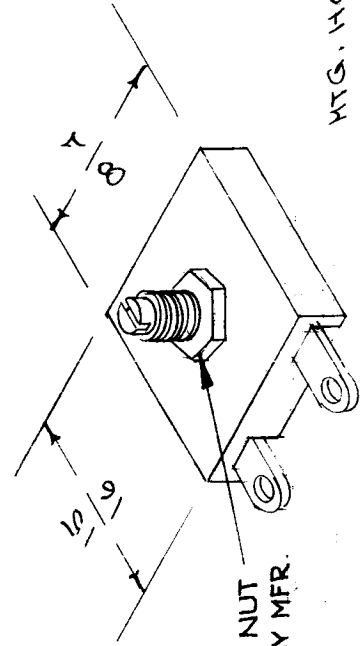
REF. MIL-C-81A AND AMEND.

REP. ITEM	PART NO.	DESCRIPTION	SYMBOL
ff	ff	THE TECHNICAL MATERIEL CORP. MAMARONECK. NEW YORK	
ff	ff	CAPACITOR, VARIABLE	
ff	ff	G.T.O.	
ff	ff	ELEC. DES. APP.	
ff	ff	MECH. DES. APP.	
ff	ff	HEAT TREAT. SPEC.	
ff	ff	FINISH & SPEC. NO.	
		DATE: 10/30/57	G.T.O.
		CHECKER	FINAL APPROV.
			CVII

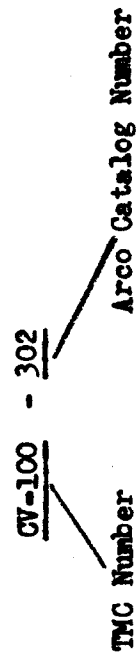
# STANDARD DRAWING

USED ON	CV-100	A
MODEL	ASSY. NO.	DATE
NEW PER UNIT		

Arco Number	No. of Plates	At 1 1/2 Inch P undrs Cap. Will Be More Than MMF.	At 2 1/2 Turns Open Cap. Will B Less Than MMF.
302	2 Pl.	130	15
303	3 Pl.	340	65
304	4 Pl.	550	100
305	5 Pl.	760	190
306	6 Pl.	970	275
307	7 Pl.	1180	350
308	8 Pl.	1390	450
309	9 Pl.	1600	550
310	10 Pl.	1890	650
311	11 Pl.	2110	780
312	12 Pl.	2330	880
313	13 Pl.	2605	1150
314	14 Pl.	2830	1300
315	15 Pl.	3055	1400



Type Designation Shall Be In The Following Form



ELECTRICAL SPECIFICATIONS:

500 VDC flash test  
250 WVDC

MECHANICAL SPECIFICATIONS:

Phosphor Bronze adjusting plates.  
Screw is insulated from top plate by Mica Washer.  
All parts are heavily plated to resist corrosion.

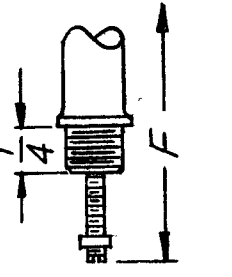
REF: Arco Electronics Inc. Type 30

REQ. ITEM	PART NO.	DESCRIPTION	SYMBOL
		THE TECHNICAL MATERIEL CORP. MAMARONECK, NEW YORK	
		NICA CAPACITOR	
		VARIABLE COMPRESSION	
ISSUE ITEM	CHANGED FROM	DRAWN	CHECKED
A 1	ADDED NOTE "12-40 HEX NUT SUPPLIED BY MFR"	<i>[Signature]</i>	<i>[Signature]</i>
	DATE	CH. NO.	DRAFTS
	5-15-63	9012	<i>[Signature]</i>
			ENG. APP.
			<i>[Signature]</i>
TOLERANCES			
MAXIMUM ALLOWABLE TOLERANCES HAVE BEEN DETERMINED AND ANY DEVIATIONS WILL BE CAUSE FOR REJECTION. REMOVE ALL BURRS AND SHARP EDGES			
DEC. DIM. ±			
FRAC. DIM. ±			
ANGULAR DIM. ±			
	FINISH & SPEC. NO.	ELEC. DES. APP. MECH. DES. APP.	FINAL APPROVAL
		<i>[Signature]</i>	<i>[Signature]</i>
			CV-100
			A

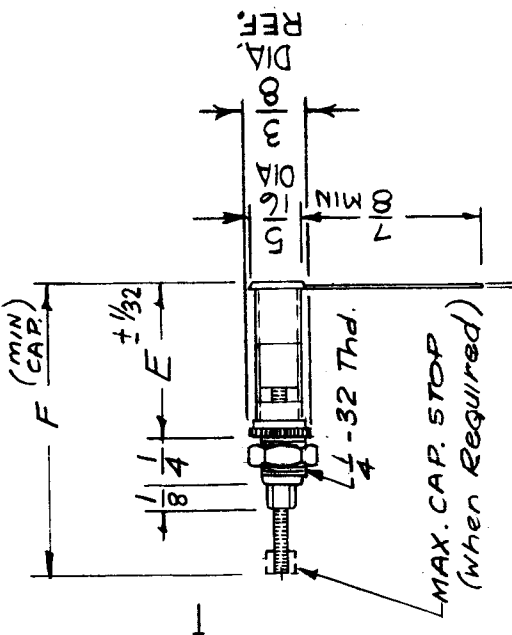
TMC NO.	MFG. NO.	CAPACITY (mmfd)	CORE MAT.	TEAM TYPE	DIM. E	MAX. P.P.P.	REQ. PER UNIT	MODEL	ASBY. NO.	DATE
CV 101-1	682056	1.0-8.0	STEEL	PAN	1 13/16	YES	18(-1)	SBE-1	AD-102	8-15-57
CV 101-2	682024	0.5-3.0	STEEL	PAN	1 13/16	YES	9	SBE-3	CLL-1	5-23-60
CV 101-3	682048	1.0-12.0	STEEL	PAN	1 1/2	YES		SBE-3		
CV 101-1	VCU-1674	1.0-8.0	STEEL	PAN	1 13/16	YES		SBE-3		
CV 101-2	VCU-1675	0.5-3.0	STEEL	PAN	1 13/16	YES		SBE-3		
CV 101-3	VCU-1676	1.0-12.0	STEEL	PAN	1 1/2	YES		SBE-3		

USED ON  
CV 101 F

ALTERNATE CONSTRUCTION



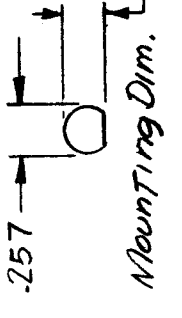
.133  
.122



**STANDARD DRAWING**

Adjustment Tool: TMC P/N TP107

- NOTES-**
- DIM. "F" taken at Min. Cap.
  - DIELECTRIC STRENGTH OF GLASS W/CORE SET AT MID-CAPACITY - 1000 VDC.
  - OPERATING TEMP. -55°C. to 125°C.
  - D.C. BREAKDOWN VOLT. (Core at Max. C) - 500V.
  - ONE 1/4-32 Hex. Nut Supplied by Mfg.
  - ONE INTERNAL TOOTH LOCKWASHER SUPPLIED BY MFG.
  - INSULATION RESISTANCE - 106 MEG-Ω
  - Q AT 20 MC - 500 MIN.
  - TORQUE - 1 TO 10 OZ. INCH
  - T.C @ 1 MC ± 100 PPM/°C



5401-120 (VCJ)  
5401-418 (GB2)

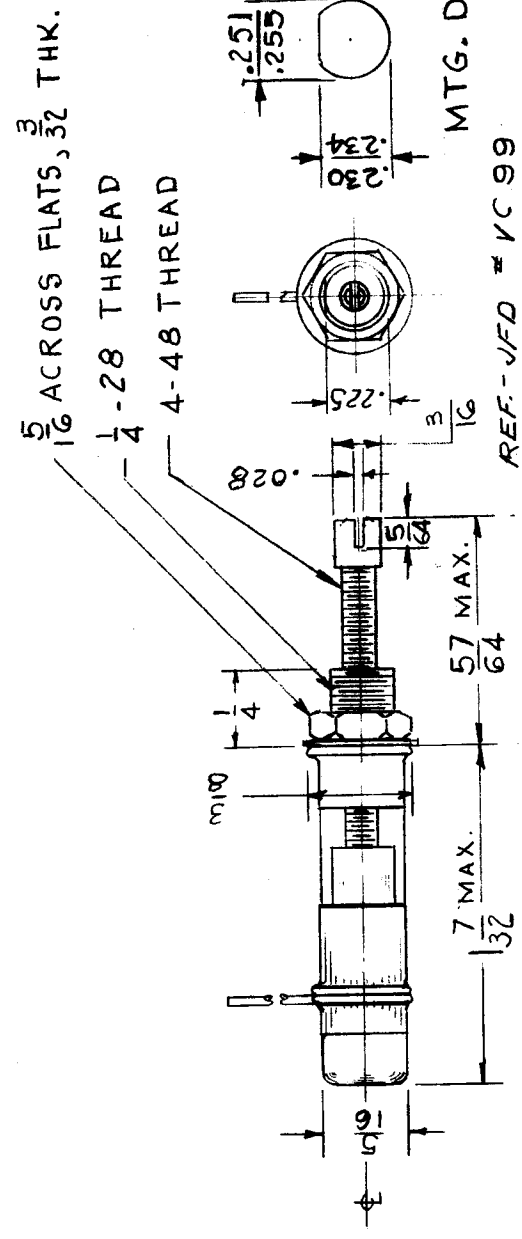
REQ. ITEM	PART NO.	DESCRIPTION	SYMBOL			
		THE TECHNICAL MATERIEL CORP. MAMARONECK, NEW YORK				
		CAPACITOR, VARIABLE, GLASS				
F	ADD. ANOTHER CV101-1-243					
E	ADDED REF. TO 3/8 DIM.					
ISSUE ITEM	CHANGED FROM	DATE	CH. NO.	DRAFTS	CHECKER	ENG. APP.
TOLERANCES						
DEC. DIM. ± .005						
FRAC. DIM. ± 1/64						
ANGULAR DIM. ± 1/2 °						
			16 8/15/57		ALB	AKR
			DRAWN			FINAL APPROVAL
			CHECKED			CV 101 F
						ELEC. DES. APP. MECH. DES. APP.

CV-102

REQ. PER UNIT	MODEL	USED ON
		ASSY. NO.
		DATE

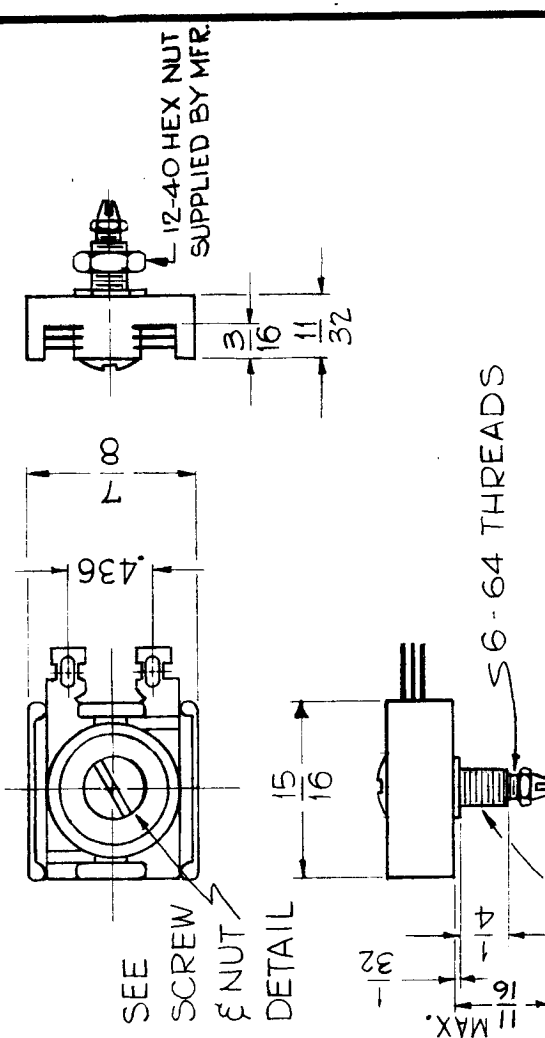
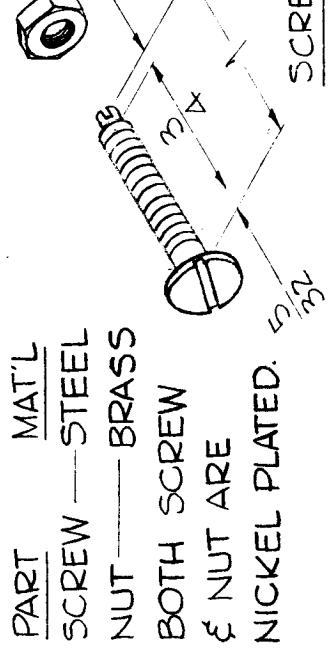
ELECTRICAL DATA

1. CAPACITANCE RANGE MIN-0.8; MAX.-10 mmf.
2. DIELECTRIC-QUARTZ TUNING PISTON & ADJ. SCREW- INVAR
3. TEMP. COEFFICIENT OF CAP. MEASURED AT 01. MC ± 50 PPM/°C
4. OPERATING TEMP. - - 55° TO +150° C
5. WORKING VOLTS - 3000 V. D.C.



REQ. ITEM	PART NO.	DESCRIPTION	SYMBOL
D 1	230 WAS .237, .251 .234 MECH. STOP ADDED TO DWG	11998	731.64
C 1	ITEM OF ELEC. DATA REVISED DWG. CHGD TO AGT WITH SUPPLR DWG.	10720	1/17/64
B 1		6135	1-2-62
A 1		1	6/20/58
ISSUE ITEM	CHANGED FROM	DATE	CH. NO.
TOLERANCES			
SCALE:			
MAXIMUM ALLOWABLE TOLERANCES HAVE BEEN DETERMINED AND ANY DEVIATIONS WILL BE CAUSE FOR REJECTION. REMOVE ALL BURRS AND SHARP EDGES			
DEC. DIM. ±			
FRAC. DIM. ±			
ANGULAR DIM. ±			
TYPE & TEMPER	HEAT TREAT. SPEC.	CHECKER	ENG. APP.
CAP	CS	CS	CS
MATERIAL			
CAPACITOR, VARIABLE, GLASS			
THE TECHNICAL MATERIEL CORP. MAMARONECK. NEW YORK			
FINISH & SPEC. NO.			
CV-102			
FINAL APPROVAL			
OBS JER			
DRAWN			
5/19/58			
CHECKED			
ELEC. DES. APP.			
MECH. DES. APP.			

REQ. PART UNIT	M DEL	USED ON ASSY. NO.	DATE	CV103 D
----------------	-------	-------------------	------	---------



PART MAT'L  
 SCREW — STEEL  
 NUT — BRASS  
 BOTH SCREW & NUT ARE NICKEL PLATED.

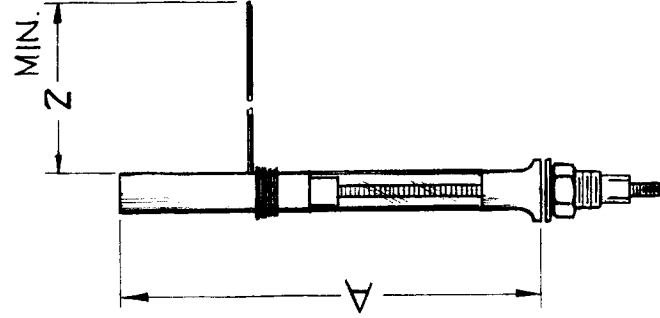
SEE SCREW & NUT DETAIL

REG. ITEM	PART NO.	DESCRIPTION	SYMBOL
		THE TECHNICAL MATERIEL CORP. MAMARONECK, NEW YORK	
	STOCK SIZE	CAPACITOR, VARIABLE MICA	
	MATERIAL		
	TYPE & TEMPER	HEAT TREAT. SPEC.	
	FINISH & SPEC. NO.		

ISSUE ITEM	CHANGED FROM	DATE	CH. NO.	DRAFTS	CHECKER	ENG. APP.
D 1	ADDED 12-40 MITG NUT & NOTE ON PICTORIAL	5-15-63	9012		J.M.	
C 1	11/16 DIM WAS 1/2	8-23-62	7137		G.S.	
B 1	Screw & Nut Detail Screw mat'l was brass	3-20-61	4476		J.C.B.	
A 1	Chart Added	8-17-60	2844		J.C.B.	

DEC. DIM. ±	FRAC. DIM. ±	ANGULAR DIM. ±	TOLERANCES	SCALE:	MAXIMUM ALLOWABLE TOLERANCES HAVE BEEN DETERMINED AND ANY DEVIATIONS WILL BE CAUSE FOR REJECTION. REMOVE ALL BURRS AND SHARP EDGES	FINAL APPROVAL
						J.C. Biele
						DRAWN
						CHECKED
						ELEC. DES. APP.
						MECH. DES. APP.

REQ. PER UNIT		USED ON ASS'Y. NO.		DATE	CV-104 A
CHG-1		TEMP. COEF. AT 0.1 MC		9-16-60	
MFG. PT. NO.		D.C. WORKING VOLTAGE		PISTON MAT'L	
VC7G		1000		A	
CAPACITANCE UUF		D.C. WORKING VOLTAGE		PISTON MAT'L	
MINIMUM MAXIMUM		1000		A	
2.0 30.0		-100 TO +100		INVAR 1-5/8	



**NOTE: IMPORTANT**  
 WHEN CV104-1 IS ORDERED FOR SPARE PARTS FOR USE IN THE CHG-2 UNITS, CV115 WILL BE USED IN ITS PLACE WITH THE ADDITION OF A PM1151 WASHER (SUPPLY WITH CV115)

REG. ITEM	REG. ITEM	PART NO.	DESCRIPTION	SYMBOL
A 1	1.4-65 13205		THE TECHNICAL MATERIEL CORP. MAMARONECK, NEW YORK	
ISSUE ITEM	DATE	CH. NO.	DRAFTS	CHECKER
	1.4-65	13205	10/15	J.C. Bielg
CHANGED FROM		SCALE: 5401-120		
TOLERANCES		MAXIMUM ALLOWABLE TOLERANCES HAVE BEEN DETERMINED AND ANY DEVIATIONS WILL BE CAUSE FOR REJECTION. REMOVE ALL BURRS AND SHARP EDGES		
DEC. DIM. ±		TYPE & TEMPER		
FRAC. DIM. ±		HEAT TREAT. SPEC.		
ANGULAR DIM. ±		FINISH & SPEC. NO.		
		MATERIAL		
		GLASS		
		DRAWN		
		CHECKED		
		FINAL APPR VAL		
		CV-104 A		

THE CONTENTS OF THIS DRAWING ARE THE EXCLUSIVE PROPERTY OF THE TECHNICAL MATERIEL CORP. ITS UNAUTHORIZED USE OR REPRODUCTION IN WHOLE OR IN PART IS STRICTLY FORBIDDEN.

REQ. PER UNIT

MODEL

HFR-1/N

USED ON

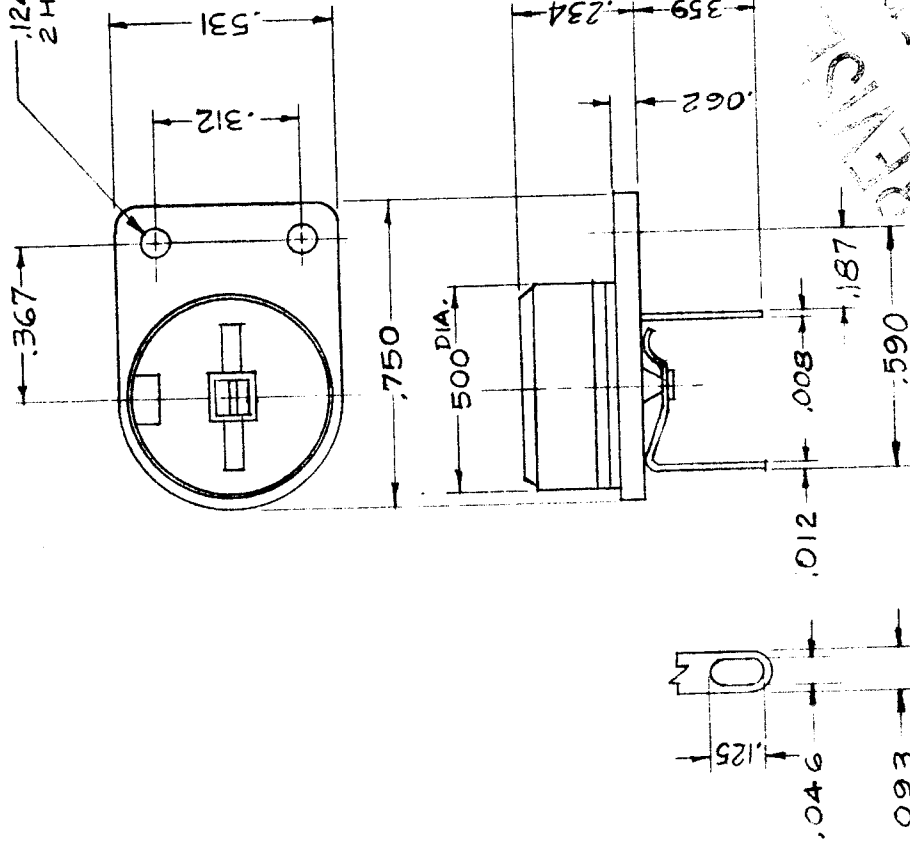
ASSY. NO.

DATE

7-24-62

CV-109

.124 DIA  
2 HOLES



TMC NO.	TEMP. COEF.	CAPAC. MMfd's		MIN. Q@ 1MC
		MIN.	MAX.	
CV-109-1	NPO	1.5	7	500
CV-109-2	NPO	3	12	500
CV-109-3	NPO	5	25	500
CV-109-4	N330	5	20	500
CV-109-5	N750	5	30	500
CV-109-6	N750	8	50	500
CV-109-7	N1500	10	75	400

WORKING VOLTAGE: 350 VDC  
 OPERATING TEMPERATURE RANGE: -55°C to +85°C  
 LIFE TEST: 700 VDC at 85°C for 250 hours.  
 FLASH TEST: 875 VDC for 1-5 seconds (50 ma MAX. CHARGING CURRENT)  
 TORQUE: MINIMUM OF 2 & MAXIMUM OF 8 INCH OUNCES.

STYLE: 557-000

WHEN ORDERING, SPECIFY: STYLE, TEMP. COEF. & CAPACITANCE RANGE. EXAMPLE: 557-000, N750-8-50PF

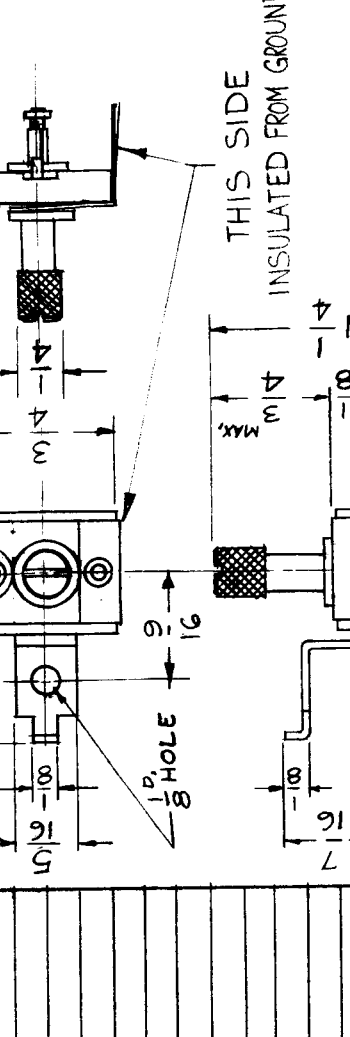
REF: ERIE RESISTOR

REQ. ITEM	PART NO.	DESCRIPTION	SYMBOL
		THE TECHNICAL MATERIEL CORP. MAMARONECK, NEW YORK	
		CAPACITOR, VARIABLE	
		MATERIAL	
		TYPE & TEMPER	W.S.
		HEAT TREAT. SPEC.	
		FINISH & SPEC. NO.	CV-109
		SCALE:	
		DATE	
		CH. NO.	
		DRAFTS	
		CHECKER	
		ENG. APP.	
UNLESS OTHERWISE SPECIFIED: DIMENSIONS ARE IN INCHES TOLERANCES ON FRAC. ± 1/64 DEC. ± .005 ANGLES ± 1/2°			
MAXIMUM ALLOWABLE TOLERANCES HAVE BEEN DETERMINED AND ANY DEVIATIONS WILL BE CAUSE FOR REJECTION. REMOVE ALL BURRS AND SHARP EDGES			
		CHECKED	FINAL APPROVAL
		DRAWN	
		ELEC. DES. APP.	
		MECH. DES. APP.	

THE CONTENTS OF THIS DRAWING ARE THE EXCLUSIVE PROPERTY OF THE TECHNICAL MATERIEL CORP. ITS UNAUTHORIZED USE OR REPRODUCTION IN WHOLE OR IN PART IS STRICTLY FORBIDDEN.		<b>USED ON</b> ASSY. NO. CV-111	DATE 2 - 8 - 62	MODEL HFS - 1	<b>REQ. PER UNIT</b>
				<b>REPRODUCTION</b>	<b>SYMBOL</b>

\* NOTE: THESE CAPACITORS NOT STANDARD. GROUND AND INSULATED SIDES ROTATED 180° FROM STANDARD CAPACITOR.

TMC No.	MFR. No.	NO. OF PLATES	GUARANTEED RANGE
			At Tight Cap. Will Be More Than MMF.
			At 3 Turns Open Cap. Will Be Less Than MMF.
CV-111-1	SPECIAL	1-1/4 PI.	15
CV-111-2	SPECIAL	1-3/4 PI.	30
CV-111-3	SPECIAL	2 PI.	80
CV-111-4	SPECIAL	3 PI.	180
CV-111-5	SPECIAL	4 PI.	280
CV-111-6	SPECIAL	5 PI.	380
CV-111-7	SPECIAL	6 PI.	480
CV-111-8	SPECIAL	7 PI.	580
CV-111-9	SPECIAL	8 PI.	680
CV-111-10	SPECIAL	9 PI.	780
CV-111-11	SPECIAL	10 PI.	900
CV-111-12	SPECIAL	11 PI.	1000
CV-111-13	SPECIAL	12 PI.	1100
CV-111-14	SPECIAL	13 PI.	1200
CV-111-15	SPECIAL	14 PI.	1300
CV-111-16	SPECIAL	15 PI.	1400



\* NOTE: THIS SIDE SHORTED TO GROUND

THIS SIDE INSULATED FROM GROUND

MOUNTING BRACKET

<b>ELECTRICAL SPECIFICATIONS:</b> Voltage 350VDCW-175VDCW			<b>MECHANICAL SPECIFICATIONS:</b> Base Ceramic Phosphor Bronze Adjusting Plates With Mica Strip Screw - Steel Nut - Brass All Parts Are Heavily Plated to Resist Corrosion.	
<b>SYMBOL</b>				
<b>DESCRIPTION</b> THE TECHNICAL MATERIEL CORP. MAMARONECK, NEW YORK CAPACITOR, MICA				
<b>STOCK SIZE</b>				
<b>MATERIAL</b> Variable, Compression				
<b>TYPE &amp; TEMPER</b> w.s. DRAWN HFS				
<b>HEATTREAT.SPEC.</b> CHECKED HFS				
<b>FINISH &amp; SPEC. NO.</b> CV-111				

\* NOTE: THESE CAPACITORS NOT STANDARD. GROUND AND INSULATED SIDES ROTATED 180° FROM STANDARD CAPACITOR.

UNLESS OTHERWISE SPECIFIED: DIMENSIONS ARE IN INCHES TOLERANCES ON FRAC. ± 1/64 DEC. ± .005 ANGLES ± 1/2°

MFR. NO. DELETED (S-46 SERIES MODIFIED)\* ADDED

SCALE: S-401-172 (S-46 SERIES MODIFIED)

MAXIMUM ALLOWABLE TOLERANCES HAVE BEEN DETERMINED AND ANY DEVIATIONS WILL BE CAUSE FOR REJECTION. REMOVE ALL BURRS AND SHARP EDGES



THE CONTENTS OF THIS DRAWING ARE THE EXCLUSIVE PROPERTY OF THE TECHNICAL MATERIEL CORP. ITS UNAUTHORIZED USE FOR REPRODUCTION IN WHOLE OR IN PART IS STRICTLY FORBIDDEN.

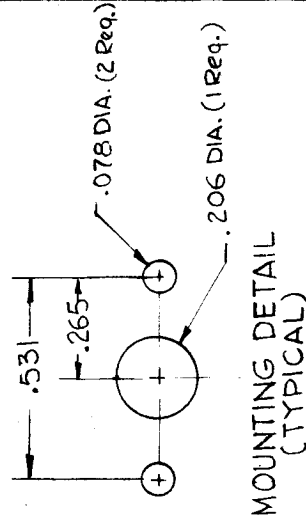
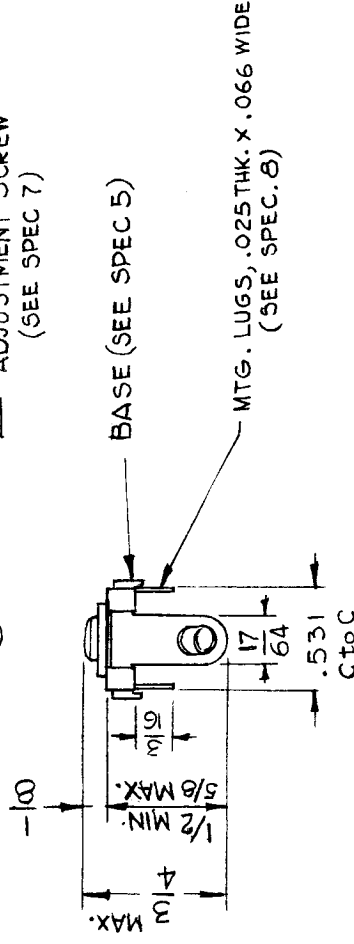
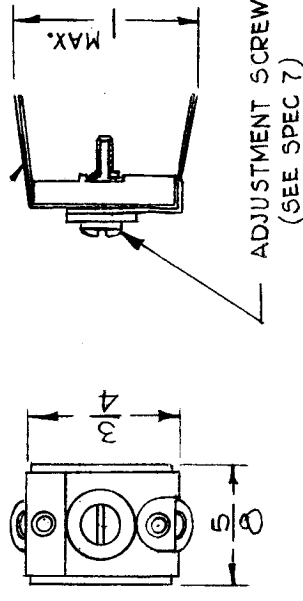
REQ. PER UNIT	MODEL	USED ON
1	TTR-10	AX-418
		DATE <b>6-10-63</b>

**CV-114**

**A**

TMC PART NUMBER	MFR. PART NUMBER	NO. OF PLATES	CAR WHEN TIGHT (Minimum)	CAP. AT 3 TURNS (Maximum)
CV-114-1	464	4	280	25
CV-114-2	466	6	350	70

ADJUSTMENT PLATES (SEE SPEC. 6)

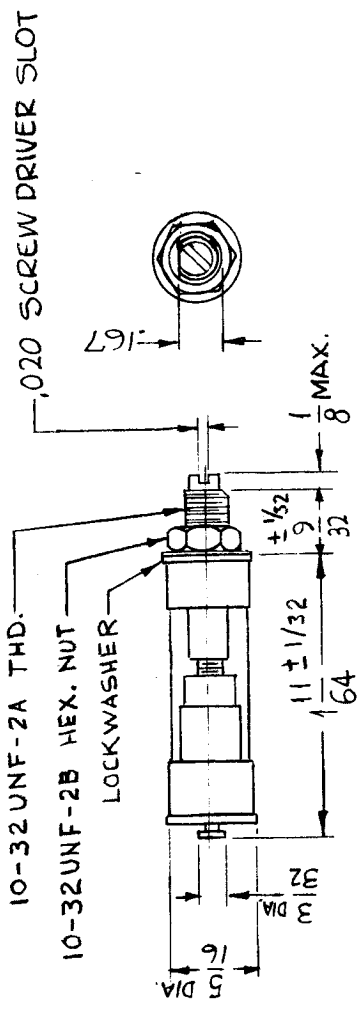


**SPECIFICATIONS**

1. TYPE: COMPRESSION
2. SECTIONS: ONE
3. WORKING VOLTAGE: 175 VDC
4. FLASH TEST: 350 VDC
5. BASE: CERAMIC (STEATITE), SILICONE TREATED
6. ADJUSTMENT PLATES: TOP PLATE, PHOSPHOR BRONZE  
CADMIUM PLATED; ALL OTHER PLATES, SPRING BRASS, TINNED FINISH
7. ADJUSTMENT SCREW: STEEL, NICKEL PLATED; 4-64 THREADS, SLOTTED PAN HEAD
8. MOUNTING LUGS: STEEL, CADMIUM PLATED

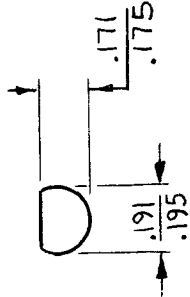
REQ. ITEM	PART NO.	KOWN	DESCRIPTION	SYMBOL
			THE TECHNICAL MATERIEL CORP. MAMARONECK.	
	STOCK SIZE			
			CAPACITOR, VARIABLE, MICA	
A	CV114-2 ADDED	8/27/65	1427	D.V.V.
			DATE	CH. NO.
			SCALE	CHECKER
SYM	DESCRIPTION	DATE	CH. NO.	DRAFTS
		DRAWN	HEAT TREAT. SPEC.	ENG. APP.
		G.D.L.	CHECKED	FINAL APPROVAL
		R. KOHN	W. JORDAN	CV-114
		ELEC. DES. APP.	MECH. DES. APP.	A
		FINISH & SPEC. NO.		
		S-401-172 (Type 46)		
UNLESS OTHERWISE SPECIFIED				
DIMENSIONS ARE IN INCHES AND INCLUDE				
CHEMICALLY APPLIED OR PLATED FINISHES				
DECIMALS	FRACTIONS			
.X ± .05	± 1/64			
.XX ± .01	ANGLES			
.XXX ± .005	± 0° 30'			
		TOLERANCES		

REQ. PER UNIT	8	MODEL	CHG-2	USED ON	CV115	DATE	10-20-64
ASSY. NO.							



**SPECIFICATIONS:**

CAPACITANCE RANGE - 1-60 PF  
 Q @ 20mc = 250 MINIMUM  
 DC WORKING VOLTS - 1000  
 OPERATING TEMP - -55°C TO +125°C  
 INSULATION RESISTANCE - 10<sup>6</sup> MEGOHMS AFTER 1 MIN. @ 500 VDC  
 DIELECTRIC STRENGTH - 2000VDC  
 TEMP. COEF - ±50PPM/°C OVER TEMP. RANGE  
 TURNING TORQUE ~ 1 TO 10 IN. OZ.



SUGGESTED MFG HOLE

REF: MIL-C-14405 (PCB9J600)

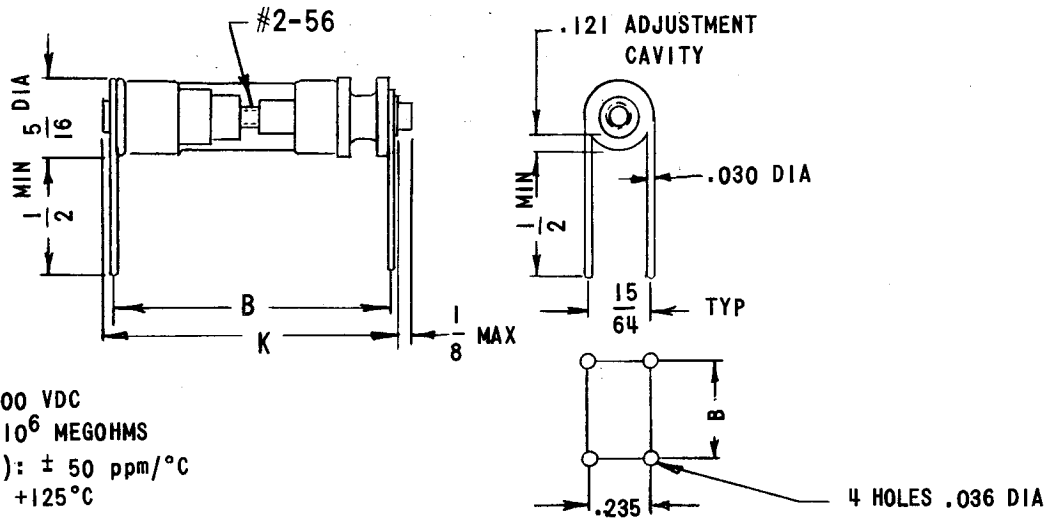
**STANDARD DRAWING**

SYMBOL	DESCRIPTION	LAWNSBY	DESCRIPTION	SYMBOL		
B	DIELEC. STRENGTH, TURNING TORQUE, & TEMP COEF ADD SECS	11.28.66	MW	906		
A	MIL. REF. ADD: 5401-375, AND "MC" ADD TO-120, PICT. DIM. REVISED; SUGG. MFG. HOLE ADD.	4.20.65	PL	906		
Ø	ORIGINAL RELEASE FOR PRODUCTION	10-27-64	Ø	4F		
X	EXP. RELEASE	10-20-64	X	SEG		
SYM	DESCRIPTION	DATE	CH. NO.	DRAFTS	CHECKER	ENG. APP.
UNLESS OTHERWISE SPECIFIED DIMENSIONS ARE IN INCHES AND INCLUDE CHEMICALLY APPLIED OR PLATED FINISHES						
TOLERANCES						
FRACTIONS ± 1/64 ANGLES ± 0° 30'						
DECIMALS .X ± .05 .XX ± .01 .XXX ± .005						
SCALE						
CODE						
C 5401-120/MC0001						
FINISH & SPEC. NO.						
5401-375/TM005						
TYPE & TEMPER						
HEAT TREAT. SPEC.						
MATERIAL						
DRAWN						
CHECKED						
FINAL APPROVAL						
ELEC. DES. APP. MECH. DES. APP.						
CV115 B						

APPLICATION			REVISIONS							
QTY	MODEL USED ON	ASS'Y NO.	LTR	DESCRIPTION	DATE	E.M.N.NO	DRAFT	CHKD	APPD	
	SME-6		X	EXPERIMENTAL RELEASE	4/18/68		C.V.			
			Ø	ORIG. RELEASE FOR PROD	7-22-68		C.V.			

TMC P/N	CATALOG NO.	FIG NO.	DIMENSIONS		CAP RANGE		MIN"Q" FACTOR MEASURED AT 20Mc
			K ±1/32	B ±1/32	pF MIN	MAX	
CV116-1	NMC626	2	1.450	1.400	1.0	75.0	250
-2	NMC624	2	1.205	1.155	1.0	52.0	350

SEE NOTE FOR TYPE ADJUSTMENT

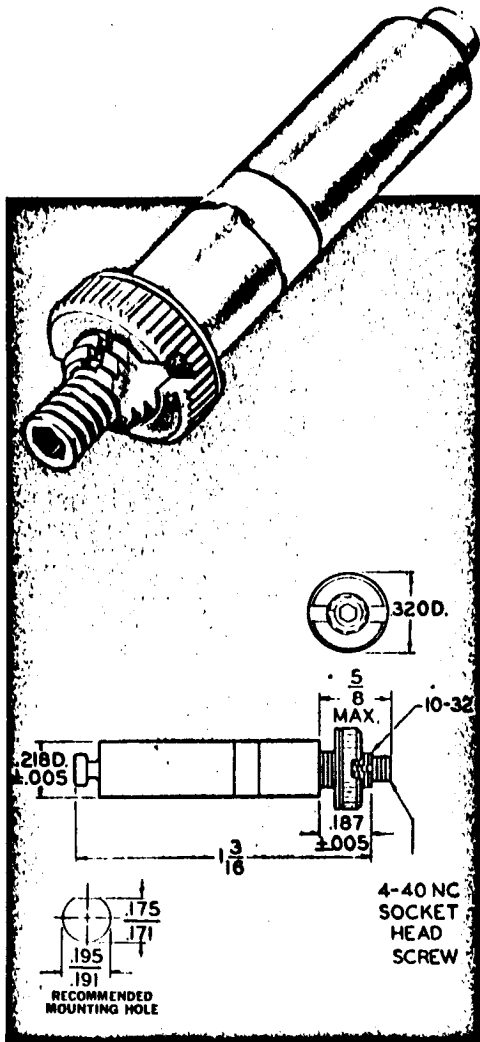


NOTES:

- WVDC: 1000
- DIELECTRIC STRENGTH: 2000 VDC
- INSULATION RESISTANCE:  $10^6$  MEGOHMS
- TEMP COEF (-55 TO +125°C):  $\pm 50$  ppm/°C
- OPERATING TEMP: -55° TO +125°C
- TUNING TORQUE: 1-10 INCH OUNCES

UNLESS OTHERWISE SPECIFIED DIMENSIONS ARE IN INCHES AND INCLUDE CHEMICALLY APPLIED OR PLATED FINISHES		REQ'D ITEM	PART NUMBER	DESCRIPTION	SYM.
DECIMALS .X ± .05 .XX ± .01 .XXX ± .005 FRACTIONS 1/64 ANGLES 0°-30°		O. POSE LIST OF MATERIAL			
MATERIAL		FINAL APPROVAL	DATE	<b>THE TECHNICAL MATERIEL CORP.</b> MAMARONECK, NEW YORK CAPACITOR, TRIMMER HIGH, RANGE, MIN	
FINISH		MECH. DES.	DATE		
S401-120		ELECT. DES. <i>Junger</i>	DATE 3/4/68		
		CHECKED	DATE 7-22-68		
		DRAWN	DATE 5-6-68	SIZE A	CODE IDENT. NO. 82679
NOTICE TO PERSONS RECEIVING THIS DRAWING THE TECHNICAL MATERIEL CORPORATION claims proprietary right in the material disclosed herein. This drawing is issued in confidence for engineering information only and may not be reproduced or used to manufacture anything shown hereon without permission from THE TECHNICAL MATERIEL CORPORATION to the user. This drawing is loaned for mutual assistance and is subject to recall at any time.				DWG NO. CV 116	ISSUE Ø
		SCALE		SHEET	OF

APPLICATION			REVISIONS						
QTY	MODEL USED ON	ASS'Y NO.	LTR	DESCRIPTION	DATE	E.M.N.NO	DRAFT	CHKD	APPD.
1	ATSA-3	AX5180	$\emptyset$	ORIGINAL RELEASE	11/30/73		DV		



Cat. No.	Mounting	Nom. pf. Max.	Cap. Per Sec. Min.	Torque Oz. In.	Voltage Break-down	Adjustment Turns Per Inch
273-15-1	Panel	2.9	.30	.2-10.0	2,000	40

UNLESS OTHERWISE SPECIFIED DIMENSIONS ARE IN INCHES AND INCLUDE CHEMICALLY APPLIED OR PLATED FINISHES		REQ'D	ITEM	PART NUMBER	DESCRIPTION	SYM.
DECIMALS: .X ± .05, .XX ± .01, .XXX ± .005 FRACTIONS: 1/64 TOLS. ANGLES: 0°-30°		LIST OF MATERIAL				
MATERIAL		FINAL APPROVAL	<i>[Signature]</i>	DATE	<b>THE TECHNICAL MATERIEL CORP.</b> MAMARONECK, NEW YORK  <b>CAP VARIABLE, H.V.</b>	
FINISH		MECH. DES.		DATE		
S401-47		ELECT. DES.		DATE		
		CHECKED		DATE		
		DRAWN	<i>[Signature]</i>	DATE	SIZE	ISSUE
NOTICE TO PERSONS RECEIVING THIS DRAWING THE TECHNICAL MATERIEL CORPORATION claims proprietary right in the material disclosed hereon. This drawing is issued in confidence for engineering information only and may not be reproduced or used to manufacture anything shown hereon without permission from THE TECHNICAL MATERIEL CORPORATION to the user. This drawing is loaned for mutual assistance and is subject to recall at any time.		CODE IDENT. NO.		DWG NO.	A	$\emptyset$
		82679		CV117	SCALE	SHEET

CV 10001

ISSUE	ITEM	CHANGED FROM	DATE	CN. NO.	DRAFTS	CHECKER	ENG. APP.	REQ.	ITEM	PART NO.	DESCRIPTION	SYMBOL
Ø		REL. TO PRD	AUG 30/67		RPL							

CAPACITANCE RANGE PF	3.5/13
CAPACITANCE TOLERANCES & min max	+10% -10% + 50%
PERMISSIBLE TEMPERATURE RANGE	-40 ..... +85° C

TYPE 7S TRIKO 023.5/13PF  
MANUFACTURE - S10045-60

MODEL	PROJECT NO.	ASS'Y. NO.	DATE
068/67			3/8/67

TMC (Canada) LIMITED OTTAWA ONTARIO	
CAPACITOR VARIABLE	
CERAMIC	
AP	ELEC. DES. BY
RPL	TECH. DES. APP.
CHECKED	FINAL APPROVAL
CV 10001 Ø	

STOCK SIZE	WEIGHT PER PC.
MATERIAL	TYPE & TEMPER
HEAT TREAT. SPEC.	FINISH & SPEC. NO.

MAXIMUM ALLOWABLE TOLERANCES HAVE BEEN DETERMINED AND DEVIATIONS WILL BE CAUSE FOR REJECTION. REMOVE ALL BURRS AND SHARP EDGES	IF IT IS FOUND DESIRABLE TO CHANGE ANY TOLERANCE OR OTHER DETAIL SPECIFIED ON THIS DRAWING NOTIFY THE PURCHASER PROMPTLY.
TOLERANCES	SCALE
DEC. DIM. ±	DIMENSIONS IN INCHES
FRAC. DIM. ±	UNLESS OTHERWISE SPECIFIED
ANGULAR DIM. ±	DRILL, PUNCH, COMMERCIAL STOCK SIZES AND MANUFACTURERS TOLERANCES ARE NOT INCLUDED.

USED ON