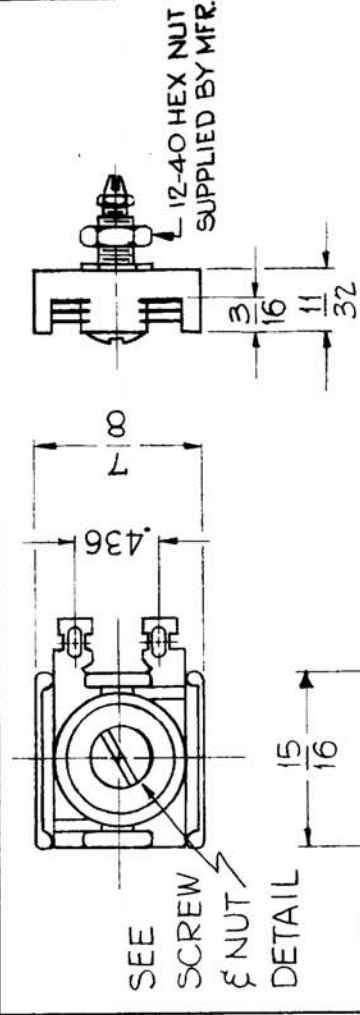
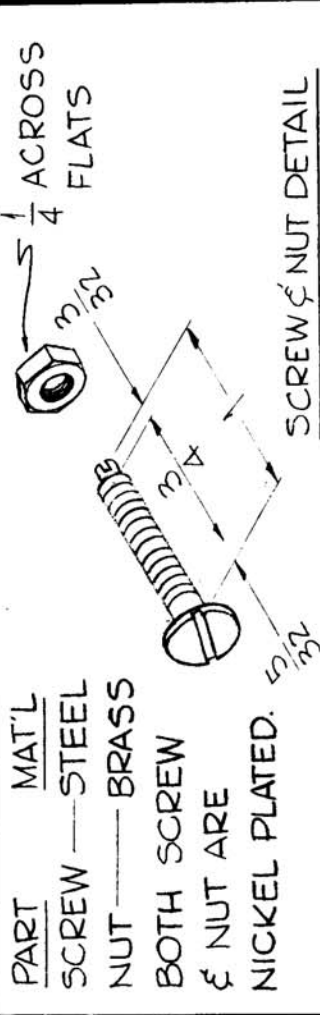


USED ON
M DEL DATE

REQ. PER UNIT
ASSY. NO.

CV103 D



TMC Code	No. of Plates	At 1 1/2 Inch Pounds Cap. Will Be More Than MMF.	At 2 1/2 Turns Open Cap. Will Be Less Than MMF.
302	2 Pl.	130	15
303	3 Pl.	340	65
304	4 Pl.	550	100
305	5 Pl.	760	190
306	6 Pl.	970	275
307	7 Pl.	1180	350
308	8 Pl.	1390	450
309	9 Pl.	1600	550
310	10 Pl.	1890	650
311	11 Pl.	2110	780
312	12 Pl.	2330	880
313	13 Pl.	2605	1150
314	14 Pl.	2830	1300
315	15 Pl.	3055	1400

ELECTRICAL SPECIFICATIONS:
500 VDC flash test
250 WVDC

TMC NO. TMC CODE
CV103-303

MECHANICAL SPECIFICATIONS:
Phosphor Bronze adjusting plates.
Screw is insulated from top plate by Mica Washer.
All parts are heavily plated to resist corrosion.

REG. ITEM	DESCRIPTION	PART NO.	SYMBOL
D 1	ADDED 12-40 MTG NUT & NOTE ON PICTORIAL	8012	ES
C 1	11/16 DIM WAS 1/2	7137	ES
B 1	Screw & Nut Detail Screw mat'l was brass	4476	ES
A 1	Chart Added	2844	ES
ISSUE ITEM	CHANGED FROM	DATE	CH. NO. DRAFTS CHECKER ENG. APP.
TOLERANCES			
SCALE:			
MAXIMUM ALLOWABLE TOLERANCES HAVE BEEN DETERMINED AND ANY DEVIATIONS WILL BE CAUSE FOR REJECTION. REMOVE ALL BURRS AND SHARP EDGES			
DEC. DIM. ±		FINISH & SPEC. NO.	
FRAC. DIM. ±		ELEC. DES. APP. MECH. DES. APP.	
ANGULAR DIM. ±		FINISH APPROVAL	
THE TECHNICAL MATERIEL CORP. MAMARONECK, NEW YORK		CV103 D	
CAPACITOR, VARIABLE MICA		J.C. Biela	
MATERIAL		DRAWN	
TYPE & TEMPER		CHECKED	
HEAT TREAT. SPEC.		ELEC. DES. APP. MECH. DES. APP.	