

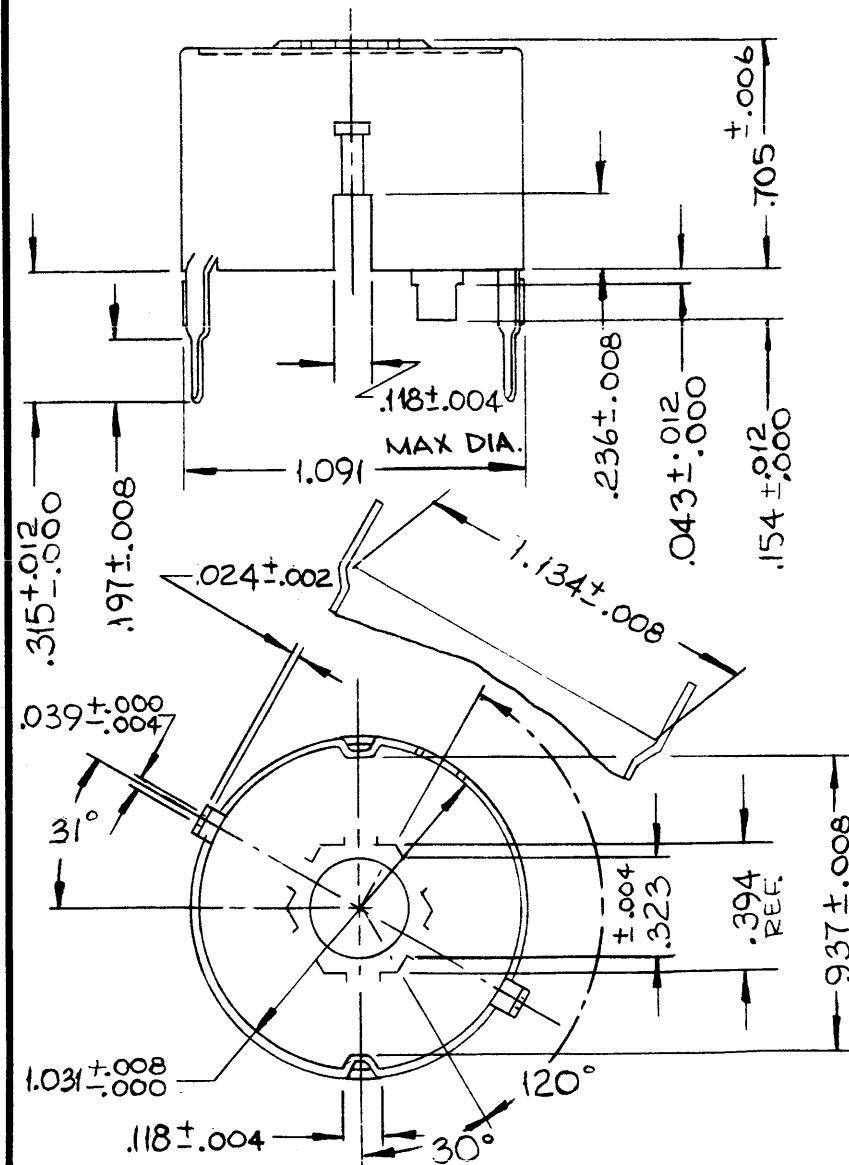
NOTE:

A COMPLETE SET OF CUI65 (2616HD) CONSISTS OF 1 EACH OF THE ITEMS SHOWN.

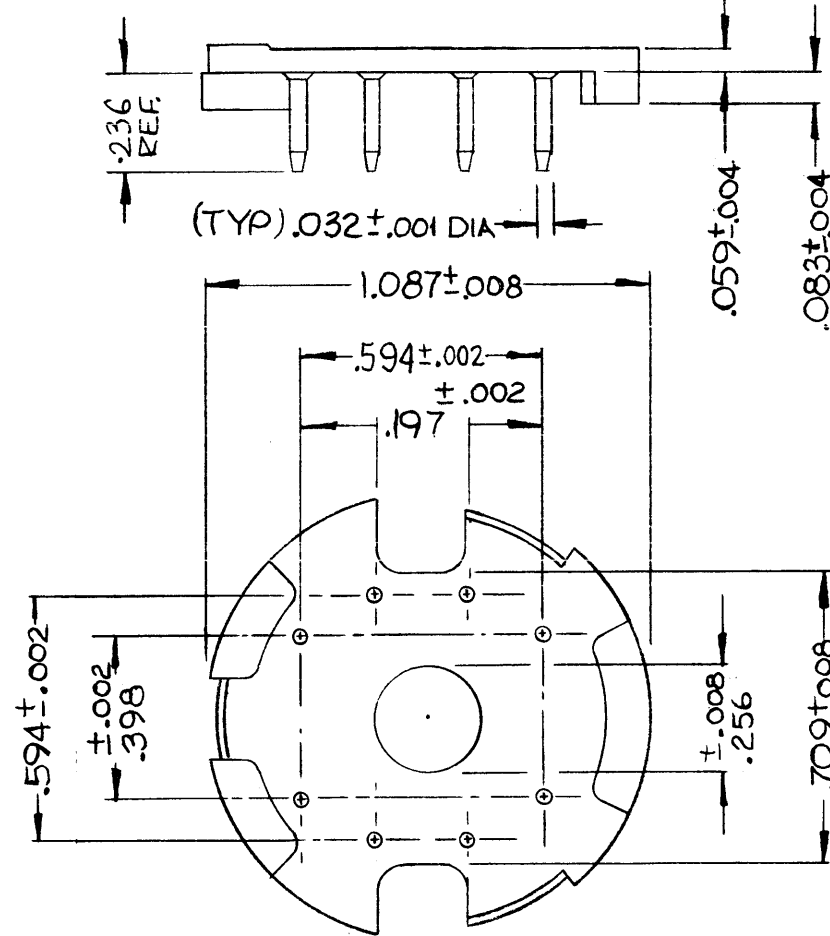
CUI65

REVISIONS

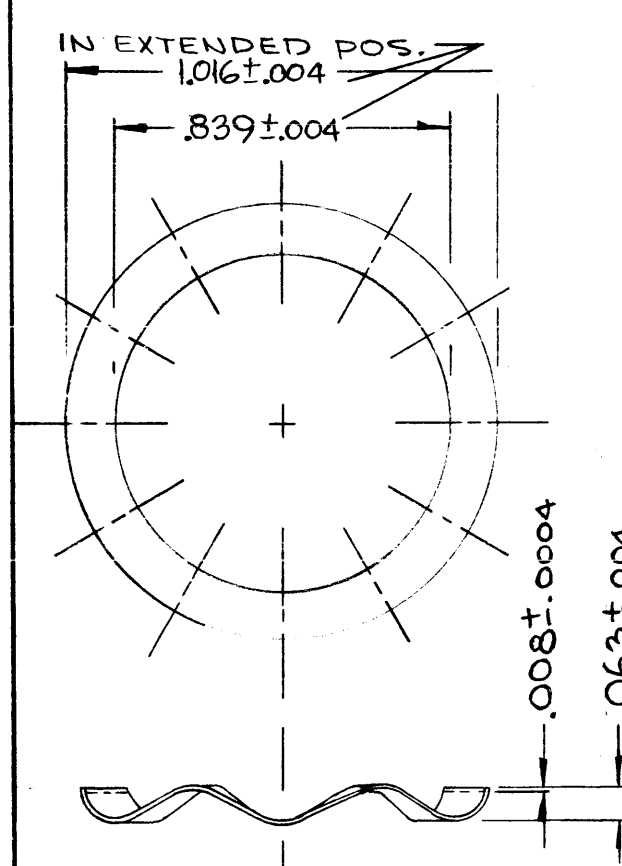
SYM	DESCRIPTION	DATE	E.M.N. NO.	DRAFT	CHKD	APPD
X1	DWG REDRAWN FOR CLARIFICATION	6.21.66	-	Wto	File	AD
Ø	ORIGINAL RELEASE FOR PRODUCTION	10/17/66	Ø	CV		



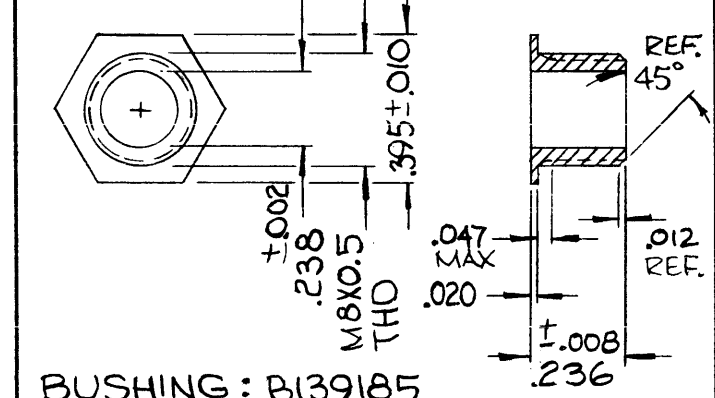
CONTAINER: B141050 (991-186-00)
MATERIAL: BRASS, NICKEL PLATED



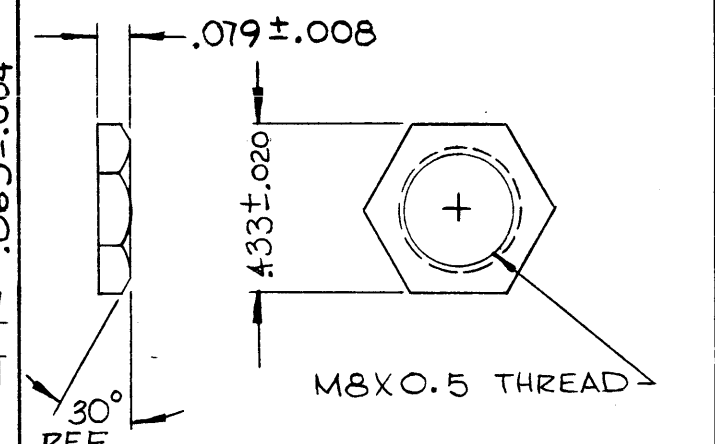
TAG PLATE: P4 057 28 (991-107-00)
MAT'L: REINFORCED POLYESTER
PINS: PHOSPHOR BRONZE
DIP SOLDERED



MAT'L: CHROME, NICKEL STEEL
SPRING: B14802 (991-110-00)



BUSHING: B139185
MATERIAL: ALUMINUM



BUSHING NUT: B143653
MATERIAL: BRASS
FINISH: NICKEL PLATED OR HOT TIN DIP.

NOTES

Q'TY./UNIT	MODEL USED ON	ASS'Y. NO.
	CFA-2	
SCALE	CODE	S401-118(2616HD)

THE CONTENTS OF THIS DRAWING ARE THE EXCLUSIVE PROPERTY OF THE TECHNICAL MATERIEL CORP. ITS UNAUTHORIZED USE OR REPRODUCTION IN WHOLE OR IN PART IS STRICTLY FORBIDDEN.

REQ'D.	ITEM	PART NUMBER	DESCRIPTION	SYMBOL
DUDDLES LIST OF MATERIAL				
MATERIAL			THE TECHNICAL MATERIEL CORP. MAMARONECK, NEW YORK	
SEE NOTES			TITLE	
SEE NOTES			RETAINER, PLUG-IN POT CORE	
UNLESS OTHERWISE SPECIFIED DIMENSIONS ARE IN INCHES AND INCLUDE CHEMICALLY APPLIED OR PLATED FINISHES			DRAWN Wto	DATE 5.17.66
			CHECKED File	DATE 6-23-66
			ELECT. DES.	DATE
			MECH. DES.	DATE
DECIMALS .X ± .05 .XX ± .01 .XXX ± .005			FINAL APPROVAL MAY 10/17/66	
FRACTIONS ± 1/64 ANGLES ± 0° 30'			CUI65	
TOLERANCES			SHEET	
			REV. LTR.	

M/L Q.B.