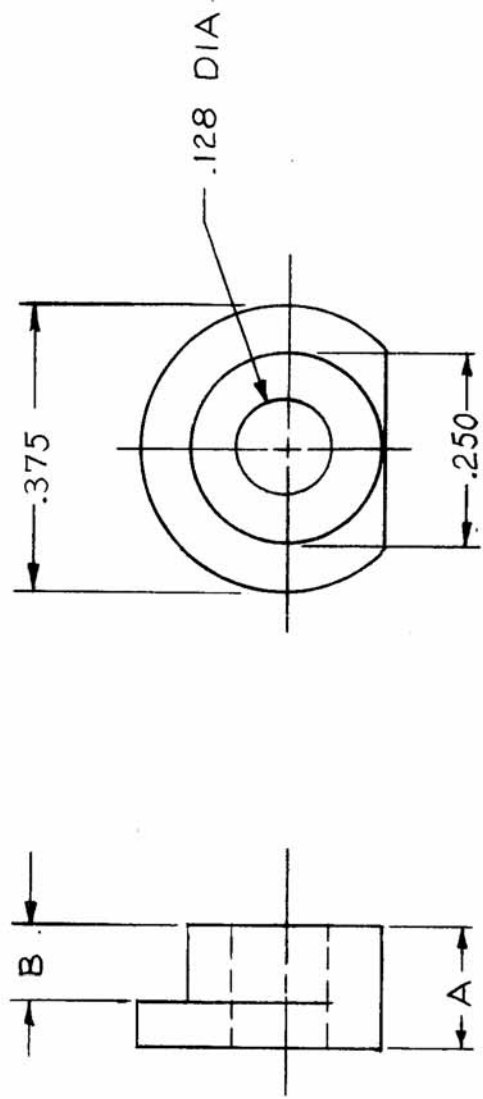


STANDARD DRAWING

| TMC NO. | MFR NO | A | B |
|---------|----------|------|------|
| CU155-1 | C9 L2-1 | .100 | .052 |
| CU155-2 | C10 L2-2 | .131 | .081 |
| CU155-3 | C11 L2-3 | .160 | .109 |
| CU155-4 | C12 L2-4 | .288 | .238 |
| CU155-5 | - L2-Ø | .263 | .213 |

| | |
|---------------|-----------|
| REQ. PER UNIT | USED ON |
| HFR-2 | ASBY. NO. |
| | DATE |
| | 5-7-64 |

CU155 A



| REQ. ITEM | PART NO. | DESCRIPTION | SYMBOL |
|--------------------|-------------------|---------------------------------|----------------|
| # 303 | STAINLESS STEEL | CLAMP | |
| # 303 | STAINLESS STEEL | MOTOR MOUNT | |
| TYPE & TEMPER | HEAT TREAT. SPEC. | DRAWN | CHECKED |
| S104 - PASSIVATE | | A. MARINO @ | RAC |
| FINISH & SPEC. NO. | | ELEC. DES. APP. MECH. DES. APP. | FINAL APPROVAL |
| | | | CU155 A |

| REQ. ITEM | PART NO. | DESCRIPTION | SYMBOL |
|--------------------|-------------------|---------------------------------|----------------|
| # 303 | STAINLESS STEEL | CLAMP | |
| # 303 | STAINLESS STEEL | MOTOR MOUNT | |
| TYPE & TEMPER | HEAT TREAT. SPEC. | DRAWN | CHECKED |
| S104 - PASSIVATE | | A. MARINO @ | RAC |
| FINISH & SPEC. NO. | | ELEC. DES. APP. MECH. DES. APP. | FINAL APPROVAL |
| | | | CU155 A |

5401-350-D ADDED - B
 ADDRESS 5401-196 - 5 ADDED
 ORIGINAL RELEASE FOR
 PRODUCTION

DATE 5/7/64

SCALE

UNLESS OTHERWISE SPECIFIED
 DIMENSIONS ARE IN INCHES AND INCLUDE
 CHEMICALLY APPLIED OR PLATED FINISHES

FRACTIONS
 ± 1/64
 ANGLES
 ± 0° 30'

TOLERANCES

DECIMALS
 .X ± .05
 .XX ± .01
 .XXX ± .005

DATE 5/5/66

CH. NO. X

DRAFTS A.M.

CHECKER

ENG. APP.

CODE C

5401-196

5401-350

D