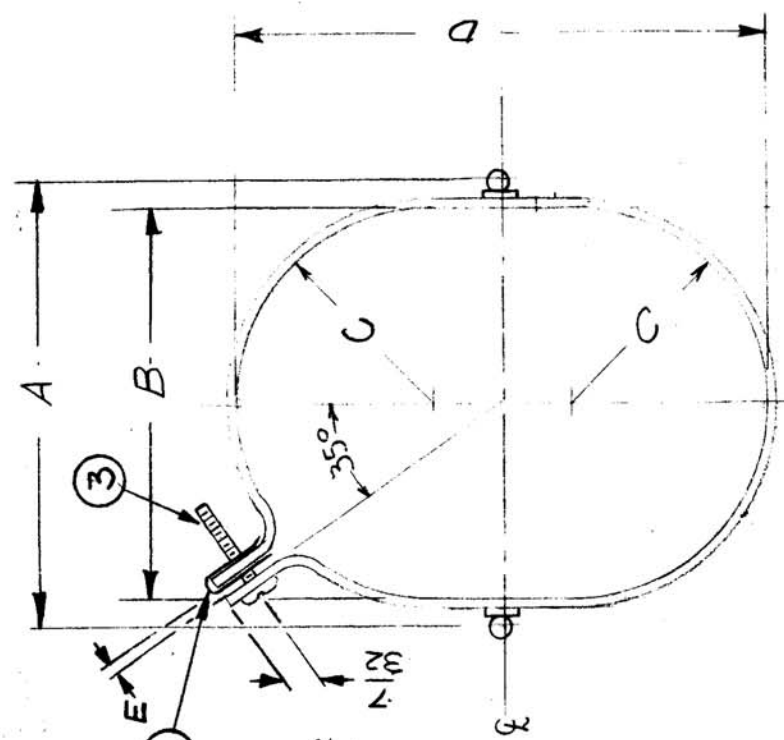
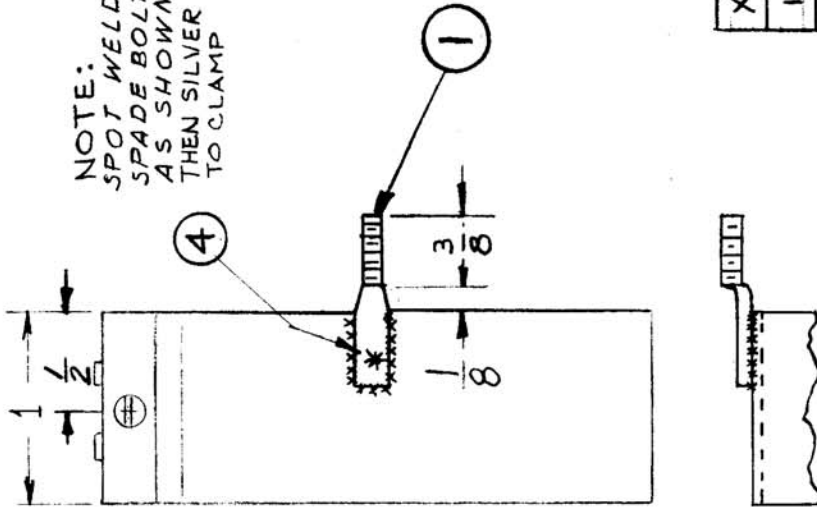


TMC PART NUMBER	"A"	"B"	"C"	"D"	"E"	USED ON
CU135	2 ³ / ₈	2 ¹ / ₈	1 ¹ / ₁₆	2 ⁷ / ₈	3 ¹ / ₁₆	CPP-2
CU135-2	2 ³ / ₁₆	2	1	3 ¹ / ₁₆	3 ¹ / ₁₆	RTPH-1
CU135-3	1-1/2	1-1/4	5/8	2-1/16	3/16	RTTD-4



NOTE:
 SPOT WELD
 SPADE BOLTS
 AS SHOWN,
 THEN SILVER SOLDER
 TO CLAMP



REQ. ITEM	DESCRIPTION	SYMBOL
4	SOLDER, SILVER	
3	SCBP0632BNB	
2	NT-108-1	
1	SC-107-2	

THE TECHNICAL MATERIEL CORP.
 MAMARONECK, NEW YORK
 CLAMP, CAPACITOR
 MOUNTING

ISSUE ITEM	CHANGED FROM	DATE	CH. NO.	DRAFTS	CHECKER	ENG. APP.
F	CU135-3 ADDED	1/22/60			KAT	
E	CHART ADDED	11/30/60			X.V.L.	
D	IT. 2, 3, 4 & STOCK SIZE ADD. IT. 1, 2, 3 NOTES DELE.	9.16.64	12239		AMB	
C	SILVER SOLDER ADDED TO NOTE LEFT BOTTOM VIEW ADDED	9-11-62	7330		W.L.	
B	ITEM (1) ADDED	2-1-62	6277		G.S.	
A	3/8 DIM WAS 1/2	4/27/61	4770		DM	
	1-1/16 WAS 1/8. MFG DETAIL ADDED					
	RELOCATED SPADE LEGS					

SCALE:
 MAXIMUM ALLOWABLE TOLERANCES HAVE BEEN DETERMINED AND ANY DEVIATIONS WILL BE CAUSE FOR REJECTION. REMOVE ALL BURRS AND SHARP EDGES.

TYPE & TEMPER	HEATTREAT. SPEC.	DRAWN	CHECKED	FINAL APPROVAL
MILD				
NICKEL PLATE				
FINISH & SPEC. NO.				

THE TECHNICAL MATERIEL CORP.
 MAMARONECK, NEW YORK
 CLAMP, CAPACITOR
 MOUNTING