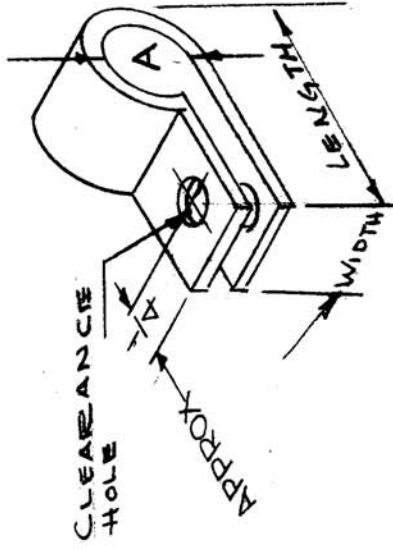


CU-130-D

UNIT MODEL ASBY. N. DATE

TRC NO.	MFG. NO.	A	CLEARANCE HOLE FOR	WIDTH	LENGTH	THICK
CU-130-1	51A	1/8	10	1/2	13/16	.050
CU-130-2	51	1/4	10	1/2	7/8	.050
CU-130-3	52	5/16	10	1/2	15/16	.050
CU-130-4	53	3/8	10	1/2	1	.050
CU-130-5	54	1/2	10	1/2	1-1/8	.050
CU-130-6	54A	5/8	10	1/2	1-1/4	.050
CU-130-7	55	3/4	1 1/4-20	3/4	1-9/16	.090
CU-130-8	57	7/8	1 1/4-20	3/4	1-5/8	.090
CU-130-9	56	1	1 1/4-20	3/4	1-3/4	.090
CU-130-10	56A	1-1/8	1 1/4-20	3/4	1-7/8	.090
CU-130-11	56B	1-1/4	1 1/4-20	3/4	2	.090
CU-130-12	54S	1-1/2		1-1/2	1-1/2	.050



REG. ITEM	PART NO.	DESCRIPTION	SYMBOL
		THE TECHNICAL MATERIEL CORP. MAMARONECK, NEW YORK	
		CLAMP	
		ALUMINUM	
		MATERIAL	
		5052-H32	
		TYPE & TEMPER	
		HEAT TREAT. SPEC.	
		S404 YELL IRIDITE	
		FINISH & SPEC. NO.	
		SCALE: 3-401-20	
		MAXIMUM ALLOWABLE TOLERANCES HAVE BEEN DETERMINED AND ANY DEVIATIONS WILL BE CAUSE FOR REJECTION. REMOVE ALL BURRS AND HARP EDGES	
		DEC. DIM. ±	
		FRAG. DIM. ±	
		ANGULAR DIM. ±	
		DATE: 3-27-61	
		CH. NO. 4488	
		DATE: 7-31-62	
		TYPE & TEMPER WAS HARD DRAWN	
		4-30-63	
		6-23-63	
		9-377	
		ON CU-130-12, ADDED MFG. NO.	
		CHANGED FROM	
		FINISH & SPEC NO ADDED	
		DRAFTS	
		CHECKER	
		ENG. APP.	
		DRAWN	
		CHECKED	
		FINAL APPROVAL	
		CU-130-D	