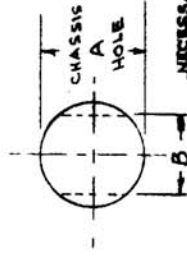


IF IT IS FOUND DESIRABLE TO CHANGE ANY TOLERANCE OR OTHER DETAIL SPECIFIED ON THIS DRAWING NOTIFY THE PURCHASER PROMPTLY.

MAXIMUM ALLOWABLE TOLERANCES HAVE BEEN DETERMINED AND DEVIATIONS WILL BE CAUSE FOR REJECTION. REMOVE ALL BURRS AND SHARP EDGES

T.M.C. NO.	CAT. NO.	WIRE TYPE	WIRE DIA.	A	B	C	D	E	F
CU-107-1	SR-3P-1	POS AND POS-64	.12X .22	.437	.395	.468	.406	.155	.064
CU-107-2	SR-6P-1	SI-18/2	.300	.625	.570	.725	.687	.280	.127

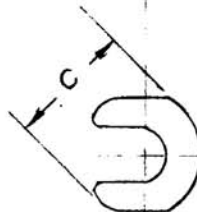
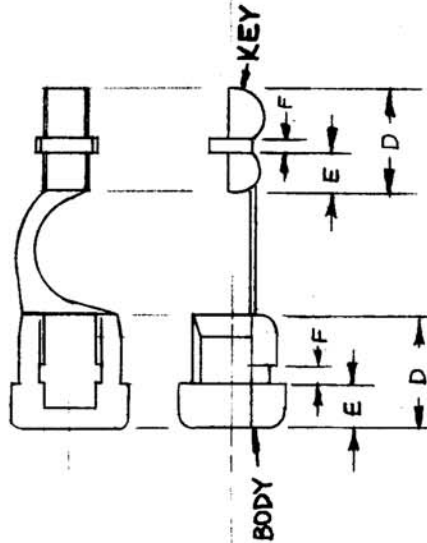
F DIMENSION INDICATES MAX. CHASSIS THICKNESS



FOR CU-107-2



FOR CU-107-1



FOR CU-107-2



FOR CU-107-1

# STANDARD DRAWING

CU-107

B

USED ON

DATE

ASS'Y. NO.

PROJECT NO.

MODEL

REF. HEYMAN MFG. CO.

REQ. ITEM	PART NO.	DESCRIPTION	SYMBOL
#		THE TECHNICAL MATERIEL CORP. MAMARONECK, NEW YORK	
#		BUSHING, STRAIN RELIEF	
#		STOCK SIZE	
#		MATERIAL	
#		TYPE & TEMPER	
#		HEAT TREAT. SPEC.	
#		FINISH & SPEC. NO.	

ISSUE ITEM	CHANGED FROM	DATE	CN. NO.	DRAFTS CHECKER	ENG. APP.
B 1	REVISED & REDRAWN	8-10-41	5415	WAR	RU 16
A 1	ORIGINAL SUBMITTED	8-10-41	4200	RU	JOB
A 2	ON CU-107-1 CAT NO. WAS SR-3P				
A 3	ON CU-107-1 CAT NO. WAS SR-6P				

TOLERANCES

ALL OTHERS  
DEC. DIM. ±  
FRAC. DIM. ±  
ANGULAR DIM. ±

SCALE #  
DRILL, PUNCH, COMMERCIAL STOCK  
SIZES AND MANUFACTURERS  
TOLERANCES ARE NOT INCLUDED.

CHECKED

G.T.O

DRAWN

C.D.D. 3-10-53

ELEC. DES. APP.

MECH. DES. APP.

FINAL APPROVAL

CU-107

B