

IF IT IS FOUND DESIRABLE TO CHANGE ANY TOLERANCE OR OTHER DETAIL SPECIFIED ON THIS DRAWING NOTIFY THE PURCHASER PROMPTLY.

MAXIMUM ALLOWABLE TOLERANCES HAVE BEEN DETERMINED AND DEVIATIONS WILL BE CAUSE FOR REJECTION. REMOVE ALL BURRS AND SHARP EDGES

# STANDARD DRAWING

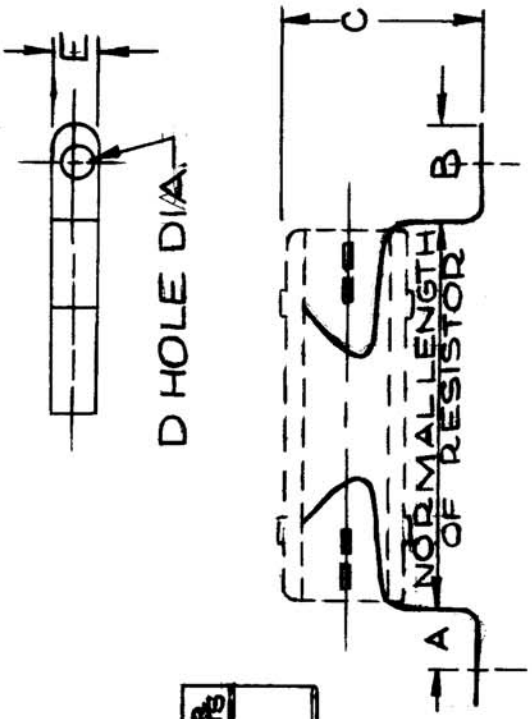
CU10009

USED ON

MODEL PROJECT NO. ASS'Y. NO. DATE

AMC6-5 CE-646 OCT. 2/59

P I M C NO.	WARD LEONARD PART NO.	RESISTOR W. P. S.
CU10009-1	813	20
CU10009-2	829	10



TMC PART NO.	DIMENSIONS IN INCHES				
	A	B	C	D	E
CU10009-1	5/16	1/2	1	.159	1/4
CU10009-2	3/16	1/32	27/32	.144	1/4

REF: WARD LEONARD.

REQ. ITEM	PART NO.	DESCRIPTION	SYMBOL
		TMC (Canada) LIMITED OTTAWA ONTARIO	
		CLAMP-RESISTOR	
MATERIAL			
WEIGHT PER PC.			
TYPE & TEMPER		J.P.C.	
HEAT TREAT. SPEC.		DRAWN L.C.M.	ELEC. DES. APP. M.K.R.
FINISH & SPEC. NO.		CHECKED L.C.M.	MECH. DES. APP. 188C
			FINAL APPROVAL
			CU10009

SCALE 1:1  
DRILL, PUNCH, COMMERCIAL STOCK SIZES AND MANUFACTURERS TOLERANCES ARE NOT INCLUDED.

ALL DIM. ± —  
FRAC. DIM. ± —  
ANGULAR DIM. ± —