

IF IT IS FOUND DESIRABLE TO CHANGE ANY TOLERANCE OR OTHER DETAIL SPECIFIED ON THIS DRAWING NOTIFY THE PURCHASER PROMPTLY.

MAXIMUM ALLOWABLE TOLERANCES HAVE BEEN DETERMINED AND DEVIATIONS WILL BE CAUSE FOR REJECTION. REMOVE ALL BURRS AND SHARP EDGES

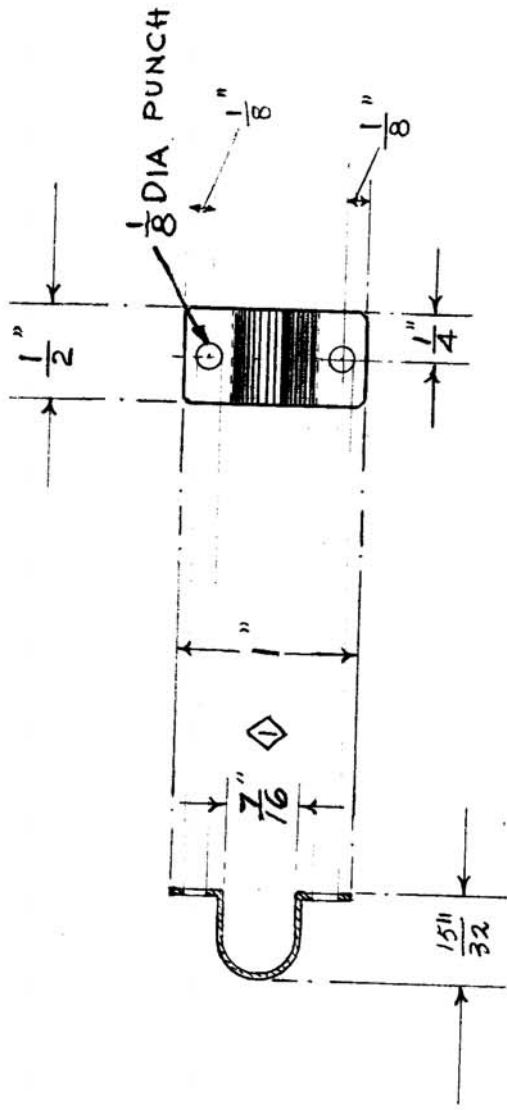
MODEL PROJECT NO. ASSY. NO. DATE

AMC-6-2

9/6/55

CU-10003

USED ON



ISSUE	ITEM	CHANGED FROM	DATE	CN. NO.	DRAFTS	CHECKER	ENG. APP.
1	A	7/8" WAS 3/8"	20/8/57	88	L.M	MU	
SCALE							
TOLERANCES							
ALL DEC. DIM. ±	DRILL, PUNCH, COMMERCIAL STOCK						
OTHERS FRAC. DIM. ± 1/64	SIZES AND MANUFACTURERS						
ANGULAR DIM. ±	TOLERANCES ARE NOT INCLUDED.						

REQ. ITEM	PART NO.	DESCRIPTION	SYMBOL
1 1/2 x 1/2		TMC (Canada) LIMITED OTTAWA	
AL4-57 1/2 hard	STOCK SIZE 0.032	CLAMP - CABLE	
MATERIAL	WEIGHT PER PC.		
		DRAWN E.C.	
TYPE & TEMPER		ELEC. DES. APP.	
		CHECKED	
HEAT TREAT. SPEC.		MECH. DES. APP.	
FINISH & SPEC. NO.		FINAL APPROVAL	
		CU-10003	A