

T.M.C. NO.	CAT. NO.	WILL FIT K.O. INCHES	WILL HOLD BY LEADED FLEXION INCHES	MIN. DIA. I.D. DIA. INCHES	MAX. I.D. DIA. INCHES										
CU1000/-1	300V	$\frac{1}{2}$ "	<table border="1"> <tr><td>14/4</td><td>14/2</td></tr> <tr><td>12/2</td><td>14/3</td></tr> <tr><td>10/2</td><td>14/4</td></tr> <tr><td>10/3</td><td>12/2</td></tr> <tr><td></td><td>12/3</td></tr> </table>	14/4	14/2	12/2	14/3	10/2	14/4	10/3	12/2		12/3	0.437	0.650
14/4	14/2														
12/2	14/3														
10/2	14/4														
10/3	12/2														
	12/3														

411C-6-11

CU10001

# STANDARD DRAWING

LOCKNUT GALVANIZED

## NOTICE TO PERSONS RECEIVING THIS DRAWING

THE TECHNICAL MATERIEL CORPORATION claims proprietary right in the material disclosed hereon. This drawing is issued in confidence for engineering information only and may not be reproduced or used to manufacture anything shown hereon without permission from THE TECHNICAL MATERIEL CORPORATION to the user. This drawing is loaned for mutual assistance and is subject to recall at any time.

Property of:

THE TECHNICAL MATERIEL CORPORATION  
MAMARONECK, NEW YORK

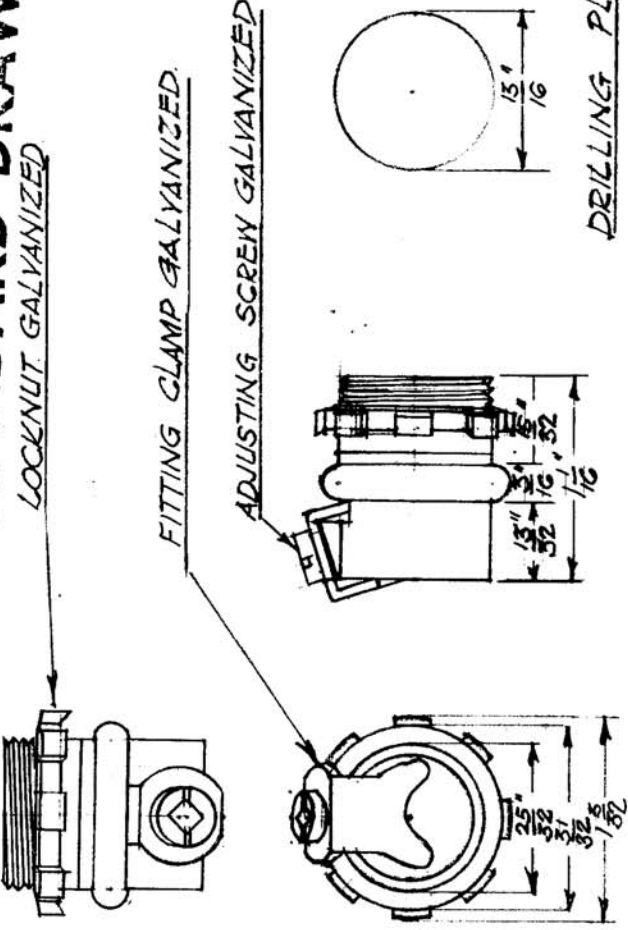
## BODY MATERIAL: GALVANIZED STEEL

## NOTICE TO PERSONS RECEIVING THIS DRAWING

THE TECHNICAL MATERIEL CORPORATION claims proprietary right in the material disclosed hereon. This drawing is issued in confidence for engineering information only and may not be reproduced or used to manufacture anything shown hereon without permission from THE TECHNICAL MATERIEL CORPORATION to the user. This drawing is loaned for mutual assistance and is subject to recall at any time.

Property of:

THE TECHNICAL MATERIEL CORPORATION  
MAMARONECK, NEW YORK



FITTING CLAMP GALVANIZED

ADJUSTING SCREW GALVANIZED

DRILLING PLAN

DIMENSIONS FOR REFERENCE ONLY.  
REF. CANADIAN GENERAL ELECTRIC COMPANY LTD.

STOCK SIZE	T.M.C. (Canada) LTD. OTTAWA ONTARIO		
MATERIAL	FITTING CONDUIT		
TYPE & TEMPER	JBH. 8-12-52		
HEAT TREAT SINGC	DRAWN	ELEC. DES. APP.	MECH. DES. APP.
FINISH & SING. NO.	Fuk		FINAL APPROVAL
			CU-10001

FULL SCALE