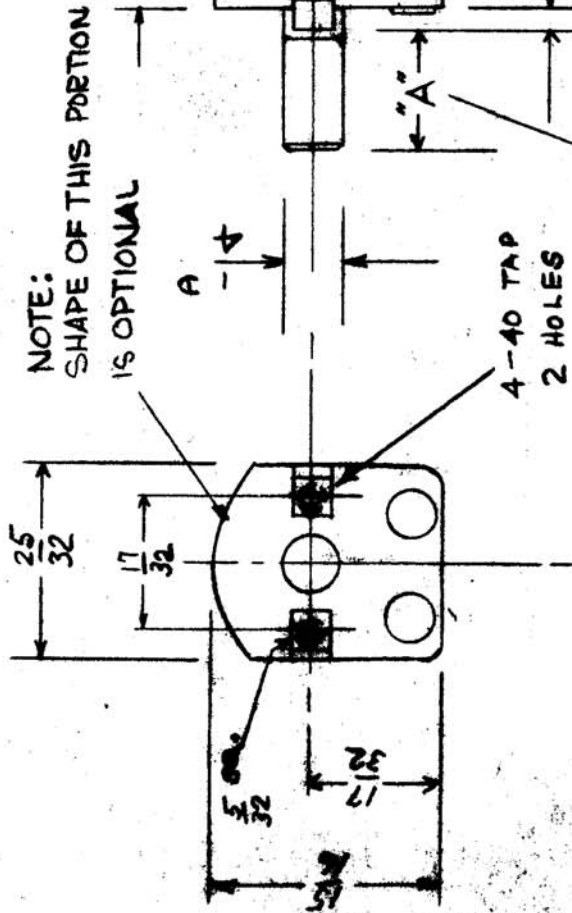


IF IT IS FOUND NECESSARY TO CHANGE ANY TOLERANCES OR OTHER DETAILS SPECIFIED ON THIS DRAWING NOTIFY THE PURCHASER PROMPTLY.

MAXIMUM ALLOWABLE TOLERANCES HAVE BEEN DETERMINED AND DEVIATIONS WILL BE CAUSE FOR REJECTION. PRESERVE ALL BURRS AND SHARP EDGES



NOTE:  
SHAPE OF THIS PORTION  
IS OPTIONAL

4-40 TAP  
2 HOLES

Commercial Standard Shaft

SHAFT DETAIL  
CT-104-3

TIME	CAPACITY - UUF		PLATES	PLATING	"B"
	MIN	MAX			
CF-104-1	2.2	50	19	11/16	5/164
CF-104-2	2.3	15	6	7/8	5/164
CF-104-3	3.2	50	19	SEE DETAIL	5/164
CF-104-4	2.9	55	14	7/8	15/32
CF-104-5	2.3	15	6	7/16	5/164
CF-104-6	2.3	15	6	2"	5/164

1/8" IS ADDED TO ALL "B" DIMS  
CRANDED FROM  
TOLERANCES

ALL DIMS ± 1/64  
ANGULAR DIMS ± 1/64

ALL DIMS CONSIDERING  
SERIES AND MANUFACTURING  
TOLERANCES ARE NOT INCLUDED.

RELEASE STANDARD

CT-104

MODEL	PROJECT NO.	BASED ON
FFR	104	
GPR	297	

ITEM	PART NO.	DESCRIPTION
1		THE TECHNICAL MATERIAL CODE
2		MAMARONCK NEW YORK
3		CAPACITOR
4		AIR TRIMMER

RA 10/10  
G.T.O

CT-104