

APPLICATION			REVISIONS						
QTY	MODEL USED ON	ASS'Y NO.	LTR	DESCRIPTION	DATE	E.M.N.NO	DRAFT	CHKD	APPD
			X	EXP. RELEASE	2-21-67		RME		
			Ø	ORIG RELEASE FOR PROD	7/11/69		CV		

TYPICAL PART NUMBER

CS13  
STYLE

B  
CHARACTERISTIC  
OP. TEMP AT FULL  
VOLTAGE  
A= -55 TO+65°C  
B= -55 TO+85°C

E  
VOLTAGE  
RATING  
B= 6  
C= 10  
D= 15  
E= 20  
F= 35  
G= 50

106  
CAPACITANCE, uF  
FIRST TWO DIGITS  
REPRESENT SIGNIFICANT  
FIGURES; 3rd DIGIT  
SPECIFIES THE NUMBER  
OF ZEROS TO FOLLOW

K  
CAPACITANCE  
TOLERANCE  
K= 10%  
M= 20%

FOR DETAILED SPECIFICATIONS SEE MIL-C-26655B-CS13

CS12 (UNINSULATED CASE)  
CS13 (INSULATED CASE)

UNLESS OTHERWISE SPECIFIED DIMENSIONS ARE IN INCHES AND INCLUDE CHEMICALLY APPLIED OR PLATED FINISHES		REQ'D	ITEM	PART NUMBER	DESCRIPTION	SYM.	
DECIMALS .X ± .05 .XX ± .01 .XXX ± .005	FRACTIONS 1/64 ANGLES 0°-30'				LIST OF MATERIAL		
MATERIAL		FINAL APPROVAL	DATE	THE TECHNICAL MATERIEL CORP. MAMARONECK, NEW YORK			
FINISH		MECH. DES.	DATE	CAPACITOR, FIXED, SOLID ELECTROLYTE TANTALUM			
		ELECT. DES.	DATE				
		CHECKED	DATE				
		DRAWN	DATE	SIZE	CODE IDENT. NO.	DWG NO.	ISSUE
NOTICE TO PERSONS RECEIVING THIS DRAWING THE TECHNICAL MATERIEL CORPORATION claims proprietary right in the material disclosed hereon. This drawing is issued in confidence for engineering information only and may not be reproduced or used to manufacture anything shown hereon without permission from THE TECHNICAL MATERIEL CORPORATION to the user. This drawing is loaned for mutual assistance and is subject to recall at any time.				A	82679	CS12,13	Ø
				SCALE	SHEET		OF

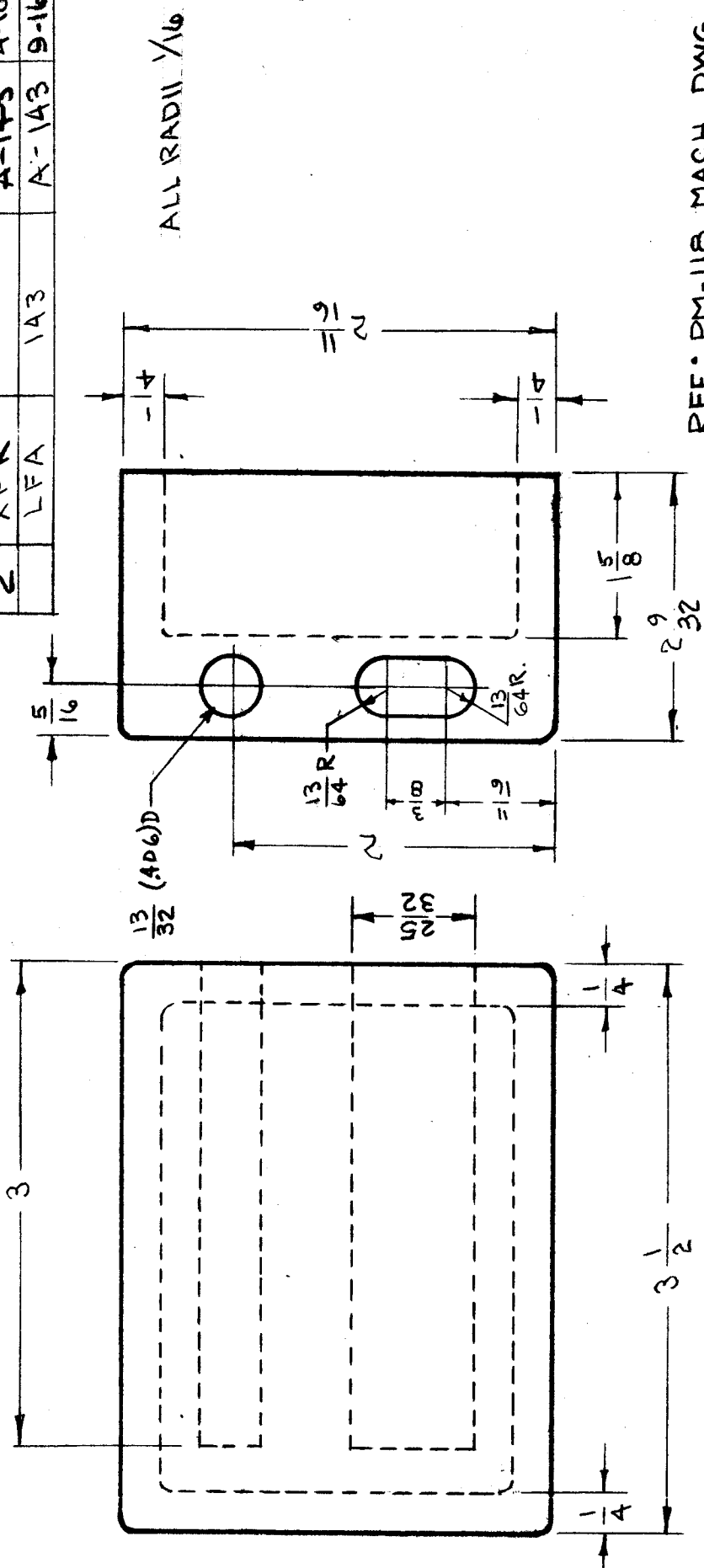
IF IT IS FOUND DESIRABLE TO CHANGE ANY TOLERANCE OR OTHER DETAIL SPECIFIED ON THIS DRAWING NOTIFY THE PURCHASER PROMPTLY.

MAXIMUM ALLOWABLE TOLERANCES HAVE BEEN DETERMINED AND DEVIATIONS WILL BE CAUSE FOR REJECTION. REMOVE ALL BURRS AND SHARP EDGES

RELEASED

CS-107 C

Req. Rev. UNIT	MODEL	PROJECT NO.	USED ON
2	XFK LFA	1A3	
			ASSY. NO. DATE
			A-143 A-10-51
			A-143 9-16-52



CASTING MUST BE FREE OF POROSITY, SAND HOLES, AND ALL SURFACES SMOOTH

REQ. ITEM	PART NO.	DESCRIPTION	SYMBOL
CASTING		THE TECHNICAL MATERIEL CORP. MAMARONECK, NEW YORK	
STOCK SIZE		CASTING, XTALOVEN	
MATERIAL	ALUMINUM		
WEIGHT PER PC.			
TYPE & TEMPER	35G-T6		
STRESS RECEIVED			
HEAT TREAT. SPEC.			
FINISH & SPEC. NO.	SAND BLAST		

ISSUE ITEM	CHANGED FROM	DATE	CN. NO.	DRAFTS/CHECKER/ENG. APP.
C 1	2 9/32 DIM. WAS 2 1/4	12/16/53	10474	[Signature]
B 2	SLOT, DIM. 2 5/32 WAS 3/4	8/6/53	8665	[Signature]
A 1	13/64 R WAS 3/16 R	11/11/52	63	[Signature]
	MALE WAS 3/8 DIA			
	1953 RELEASE			

DEC. DIM. ± 0.031	DRILL, PUNCH, COMMERCIAL STOCK SIZES AND MANUFACTURERS TOLERANCES ARE NOT INCLUDED.
FRAC. DIM. ± 1/32	
ANGULAR DIM. ±	
TOLERANCES	
SCALE	
MECH. DES. APP.	A. J. J.
ELEC. DES. APP.	
CHECKED	WDC 10-27
FINAL APPROVAL	
SUPERCEDES	CS-107
AMS-III	C

THE CONTENTS OF THIS DRAWING ARE THE EXCLUSIVE PROPERTY OF THE TECHNICAL MATERIEL CORP. ITS UNAUTHORIZED USE OR REPRODUCTION IN WHOLE OR IN PART IS STRICTLY FORBIDDEN.

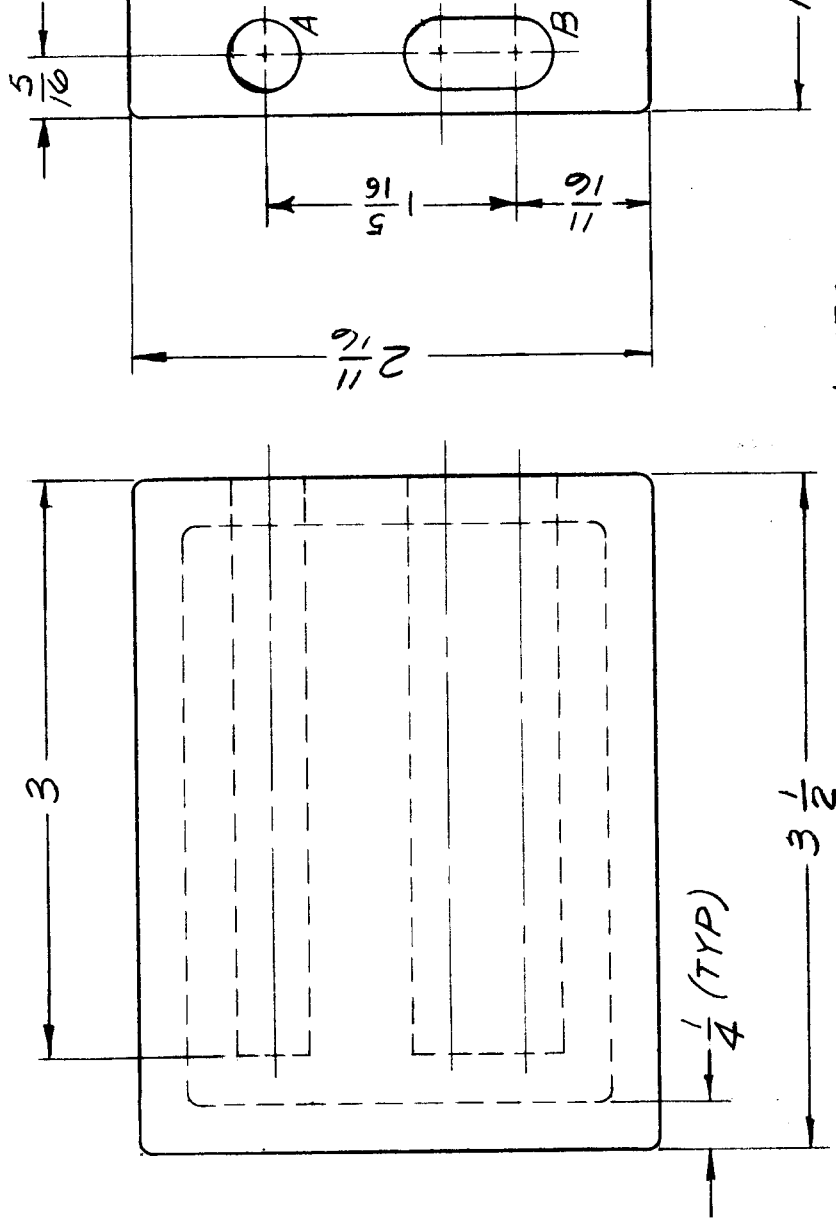
REQ. PER UNIT  
1

MODEL  
TRX-1

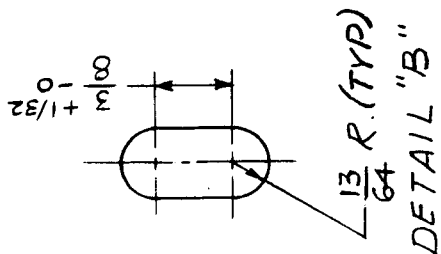
USED ON  
ASSY. NO.  
AO-111

DATE  
8-24-62

CS-126



LEGEND		
SYM	DESC.	REQ'D
A	5/32 DIA	1
B	SEE	1
	DETAIL	1



NOTES:  
1. THIS ITEM USES THE SAME MOLD AS TMC #CS-107 WITH A 5/8" INSERT IN MOLD.  
2. ALL RADII 1/16".

3. CASTING MUST BE FREE OF POROSITY, SAND HOLES, & ALL SURFACES SMOOTH.

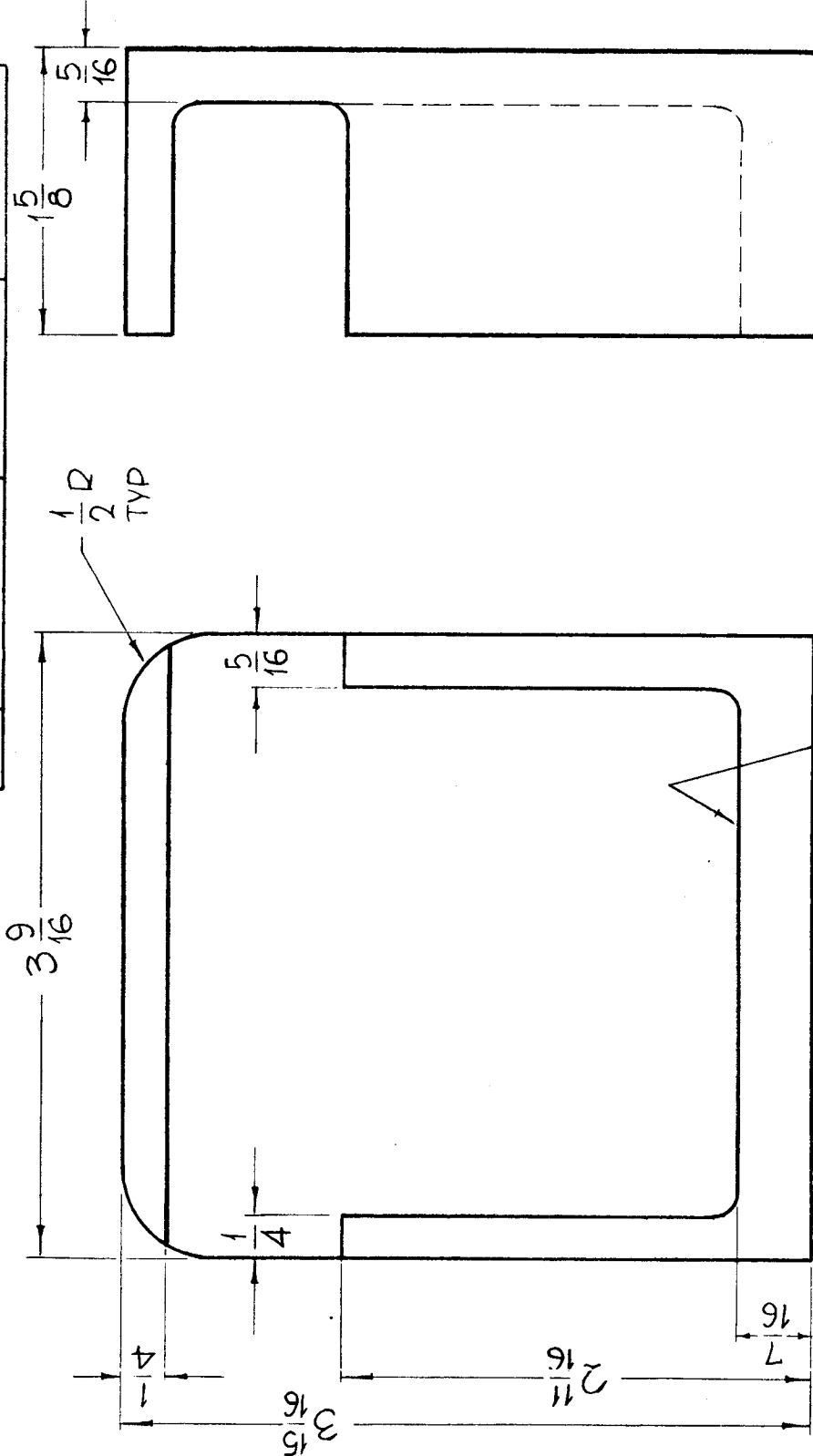
REF. PM-812

REQ. ITEM	PART NO.	J. STRUMER	DESCRIPTION	SYMBOL
CASTING			THE TECHNICAL MATERIEL CORP. MAMARONECK, NEW YORK	
ALUMINUM			CASTING, XTAL OVEN	
356-T6		T. RAMIREZ	STRESS RELIEVED	
SAND BLAST		JMA	HEAT TREAT. SPEC.	
			FINISH & SPEC. NO.	
			DATE	
			CH. NO.	
			DRAFTS	
			CHECKER	
			ENG. APP.	
			SCALE: FULL	
			UNLESS OTHERWISE SPECIFIED: DIMENSIONS ARE IN INCHES TOLERANCES ON FRAC ± 1/32 FRAC. ± 1/64 DEC. ± .005 ANGLES ± 1/2°	
			MAXIMUM ALLOWABLE TOLERANCES HAVE BEEN DETERMINED AND ANY DEVIATIONS WILL BE CAUSE FOR REJECTION. REMOVE ALL BURRS AND SHARP EDGES	
			DRAWN	
			CHECKED	
			FINAL APPROVAL	
			MECH. DES. APP.	
			MECH. DES. APP.	

THE CONTENTS OF THIS DRAWING ARE THE EXCLUSIVE PROPERTY OF THE TECHNICAL MATERIEL CORP. ITS UNAUTHORIZED USE FOR REPRODUCTION IN WHOLE OR IN PART IS STRICTLY FORBIDDEN.

RE. PER UNIT	MODEL	USED ON ASSY. NO.	DATE
1	GPT-200K (AX-395)	A-3202	6-13-63
1	GPT-200K (AX-395)	A-3204	6-13-63

CS-130 0



METAL STAMP TMC PART NO. 1/8 HIGH GOTHIC, (CS-130-0)

UNLESS OTHERWISE SPECIFIED ALL FILLETS AND ROUNDS 1/8R

DEF. MACHING'S, TMC NO. PM-925, PM-926

REQ. ITEM	PART NO.	DESCRIPTION	SYMBOL
		F. BUDETTI	
	SIZE AS NOTED	THE TECHNICAL MATERIEL CORP. MAMARONECK, NEW YORK	
	STOCK SIZE		
	ALUMINUM	CASTING, COUNTER REDUCTION BOX	
	356-T-6	John C. Biele AA 9/16 RA	4-6-64
	TYPE & TEMPER	HEAT TREAT. SPEC.	FINAL APPROVAL
	NONE		
	FINISH & SPEC. NO.		CS-130 0

UNLESS OTHERWISE SPECIFIED DIMENSIONS ARE IN INCHES AND INCLUDE CHEMICALLY APPLIED OR PLATED FINISHES

DECIMALS  
 .X ± .05  
 .XX ± .01  
 .XXX ± .005

FRACTIONS  
 ± 1/64  
 ANGLES  
 ± 0° 30'

TOLERANCES

SCALE 1/32

DATE 4/3/64

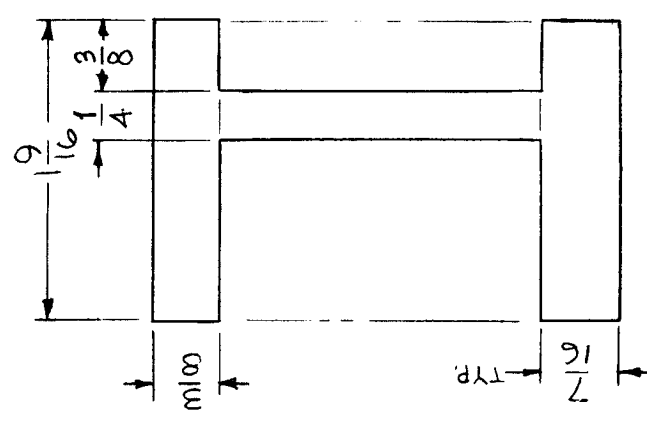
CH. NO. #

CHECKER

ENG. APP.

CODE A

REQ. PER UNIT	1	MODEL	RFTA-1	USED ON	ASS'Y. NO.	DATE
						10-12-65
			CS133			
			Ø			



REF: PM1212

REQ. ITEM		PART NO.		F. BUDETTI	DESCRIPTION	SYMBOL
					THE TECHNICAL MATERIEL CORP. MAMARONECK, NEW YORK	
		STOCK SIZE			CASTING, MOTOR MOUNT	
		ALUMINUM				
		MATERIAL				
		TYPE & TEMPER				
		HEAT TREAT. SPEC.				
		FINISH & SPEC. NO.				
		DATE	11-13-68			
		SCALE	1:1			
		CH. NO.	Ø			
		DRAFTS	R.G.			
		CHECKER				
		ENG. APP.				
		DESCRIPTION				
		UNLESS OTHERWISE SPECIFIED DIMENSIONS ARE IN INCHES AND INCLUDE CHEMICALLY APPLIED OR PLATED FINISHES				
		FRACTIONS				
		± 1/64				
		ANGLES				
		± 0° 30'				
		TOLERANCES				
		DECIMALS				
		.X ± .05				
		.XX ± .01				
		.XXX ± .005				
		CODE	C			
		DRAWN				
		CHECKED				
		FINAL APPROVAL				
		ELEC. DES. APP.				
		MECH. DES. APP.				
		CS133				
		Ø				