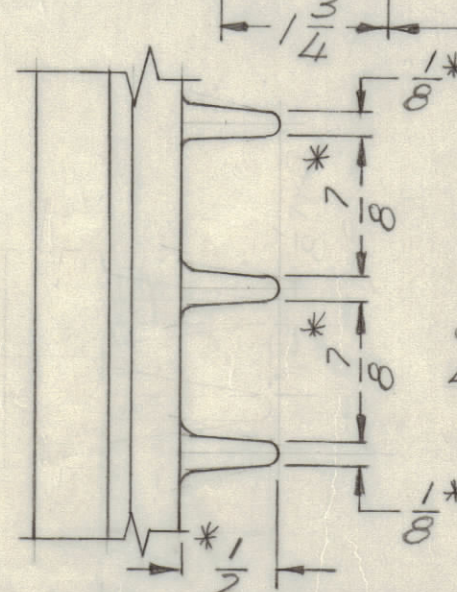
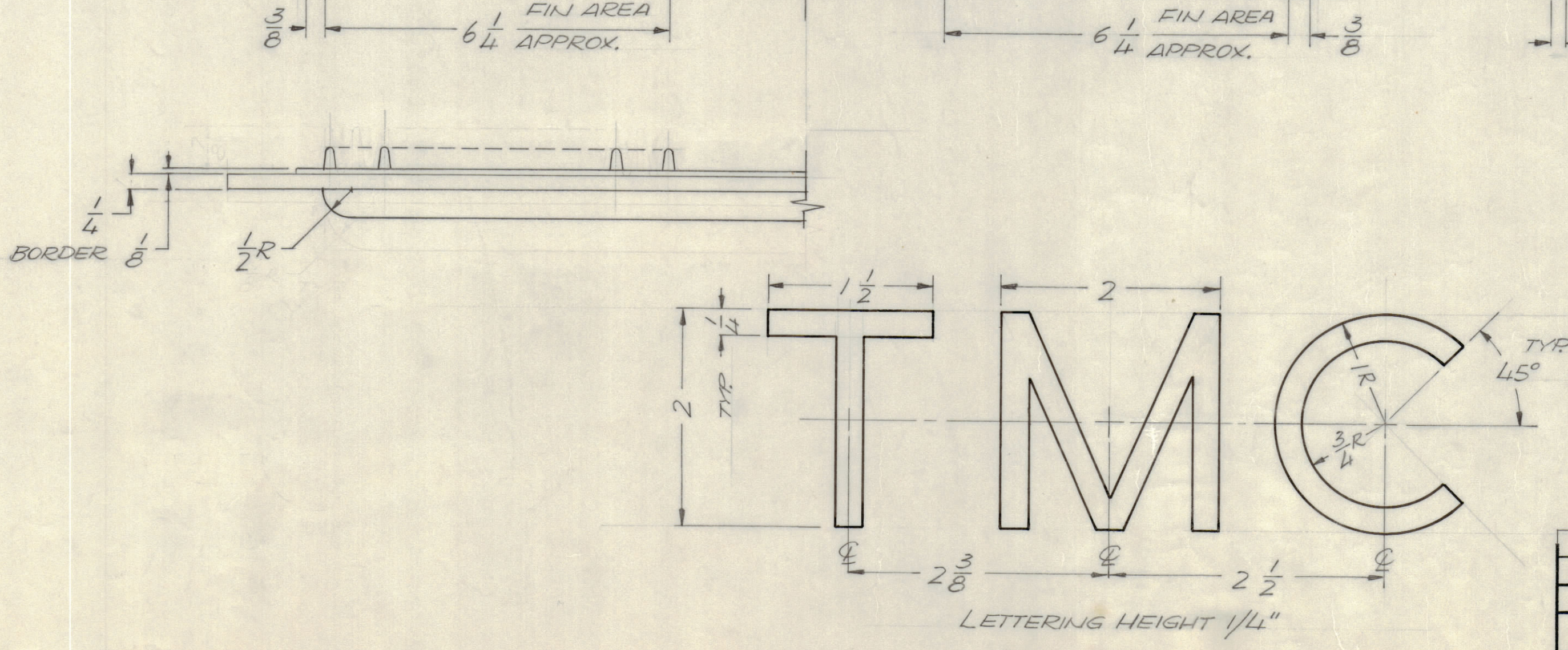
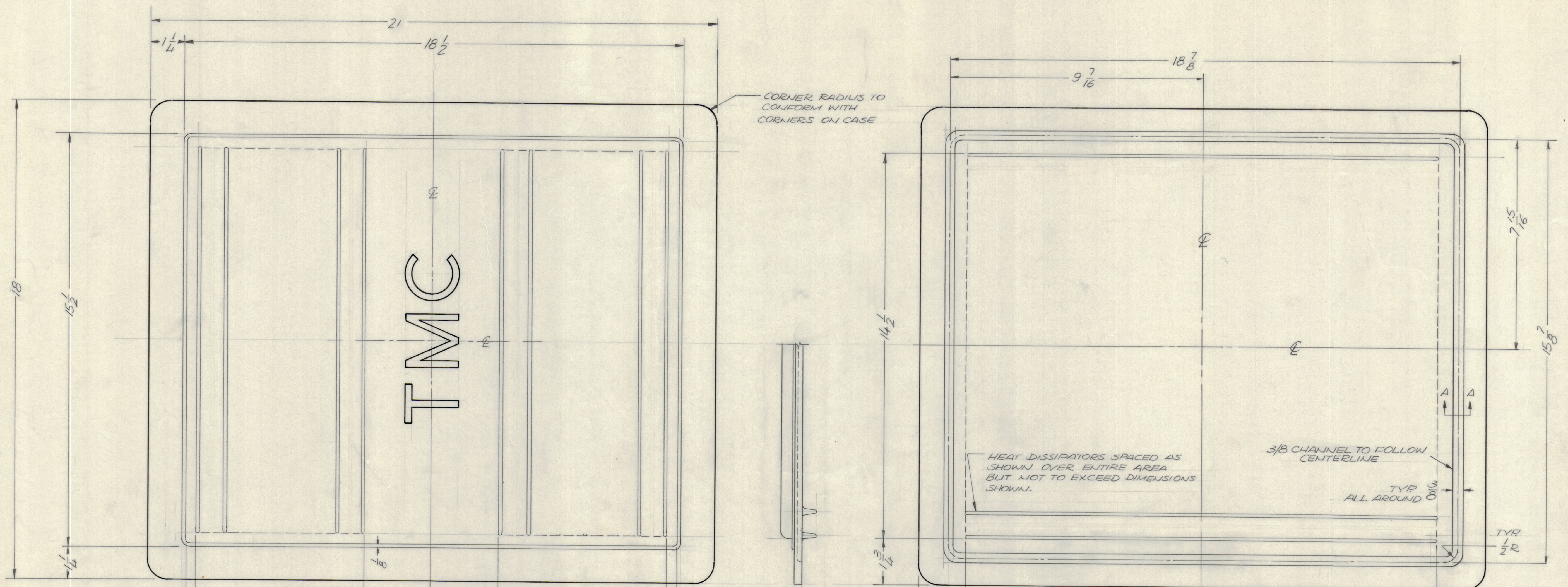
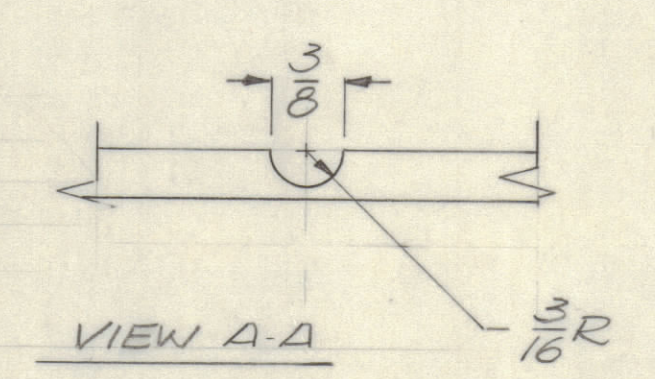


REVISIONS					DATE	APPROVED
E.M.N.O.	DRAFT	CHKD	ZONE	LTR	DESCRIPTION	
GE				X	REDUCE NO. OF FINIS & SIZE WAS 7/8 HIGH	2/20/73
GE				XI	INCREASE COVER THICKS TO 5/16 WAS 1/4 THK	5/11/73
DV				Ø	ORIGINAL RELEASE FOR PRODUCTION	12/7/73



- NOTES**
1. CASTING TO BE FREE OF POROSITY, AIR HOLES & ALL SURFACES SMOOTH.
 2. USE MIN. DRAFT (.062 MAX DRAFT).
 3. SAND BLAST TO REMOVE ALL SHARP EDGES.
 4. APPROX. 3/8 R ON ALL FILLETS. REF. MACHINING DWG.



QTY / UNIT	MODEL USED ON	ASS'Y NO.
	AX5176	
APPLICATION		
	CODE	
<small>NOTICE TO PERSONS RECEIVING THIS DRAWING</small> <small>THE TECHNICAL MATERIEL CORPORATION claims proprietary right in the material disclosed hereon. This drawing is issued in confidence for engineering information only and may not be reproduced or used to manufacture anything shown hereon without permission from THE TECHNICAL MATERIEL CORPORATION to the user. This drawing is loaned for mutual assistance and is subject to recall at any time.</small>		

TOLERANCES ON	
DECIMALS	FRACTIONS
.X ± .05	± 1/64
.XX ± .01	ANGLES ± 0° -30'
.XXX ± .005	

QTY. REQ.	ITEM	PART NO.	DESCRIPTION	SYMBOL
	F. BUDETTI		LIST OF MATERIAL	
	FINAL APPROVAL	DATE		
	MECH. DES.	DATE		
	ELECT. DES.	DATE		
	CHECKED	DATE		
	DRAWN	DATE		
			THE TECHNICAL MATERIEL CORP. MAMARONECK, NEW YORK	
			COVER, CASTING	
			SIZE CODE IDENT NO. DWG NO.	ISSUE
			D 82679 CS137	Ø
			SCALE 1/2	SHEET OF