

7

6

5

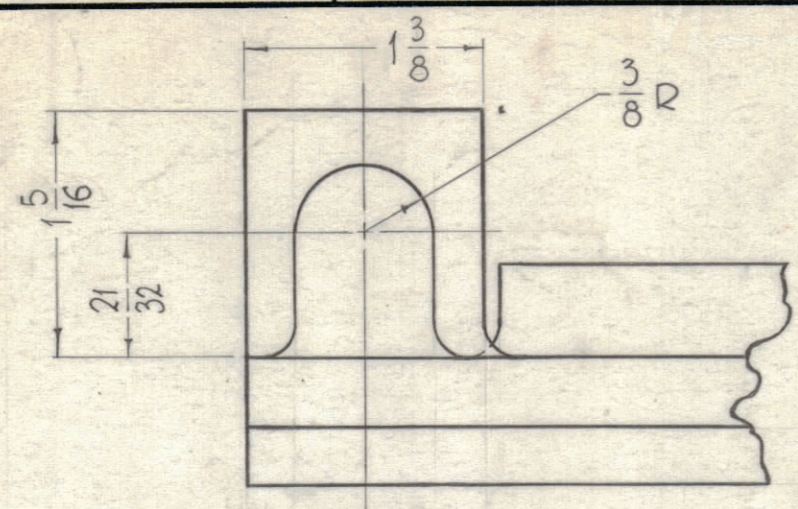
4

3

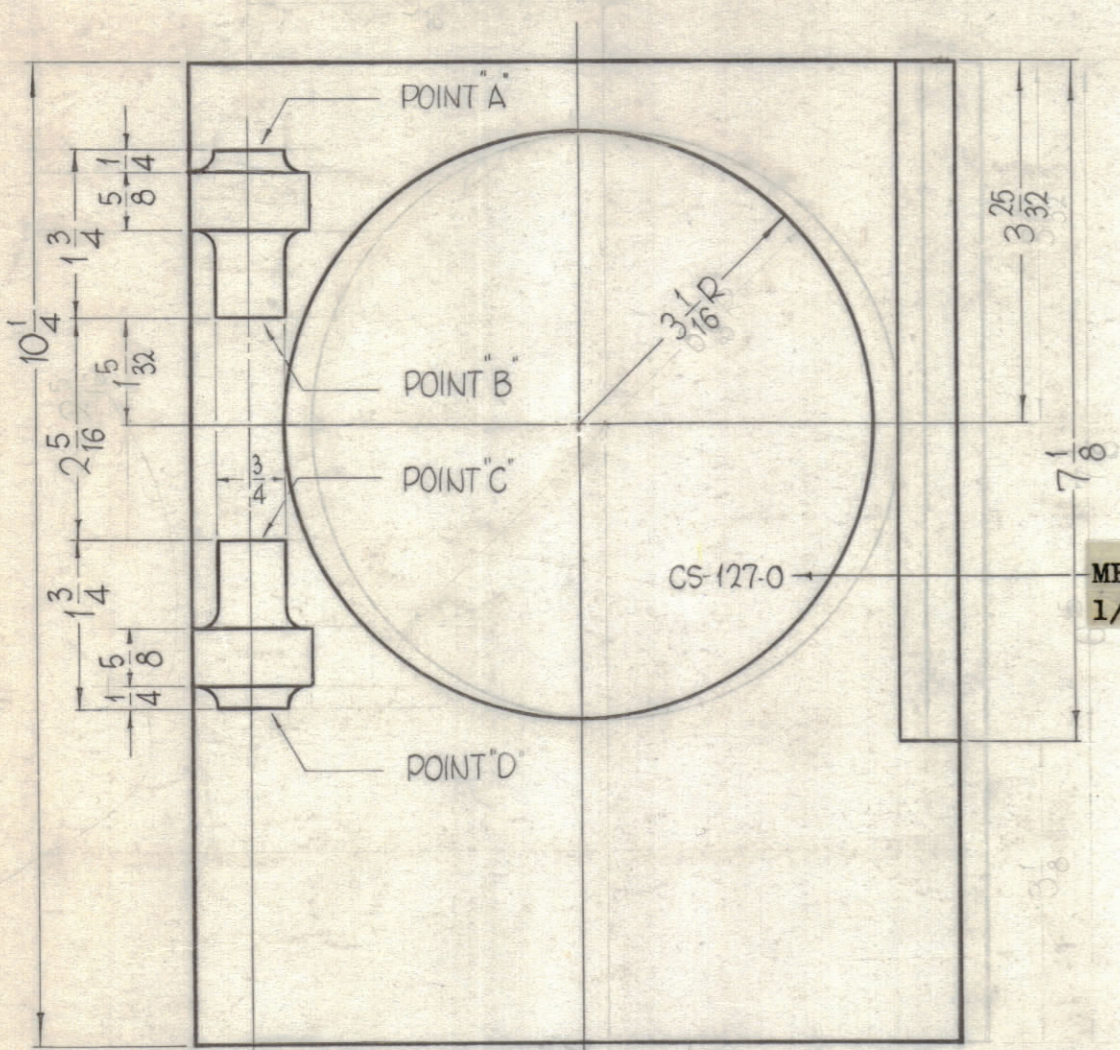
2

1

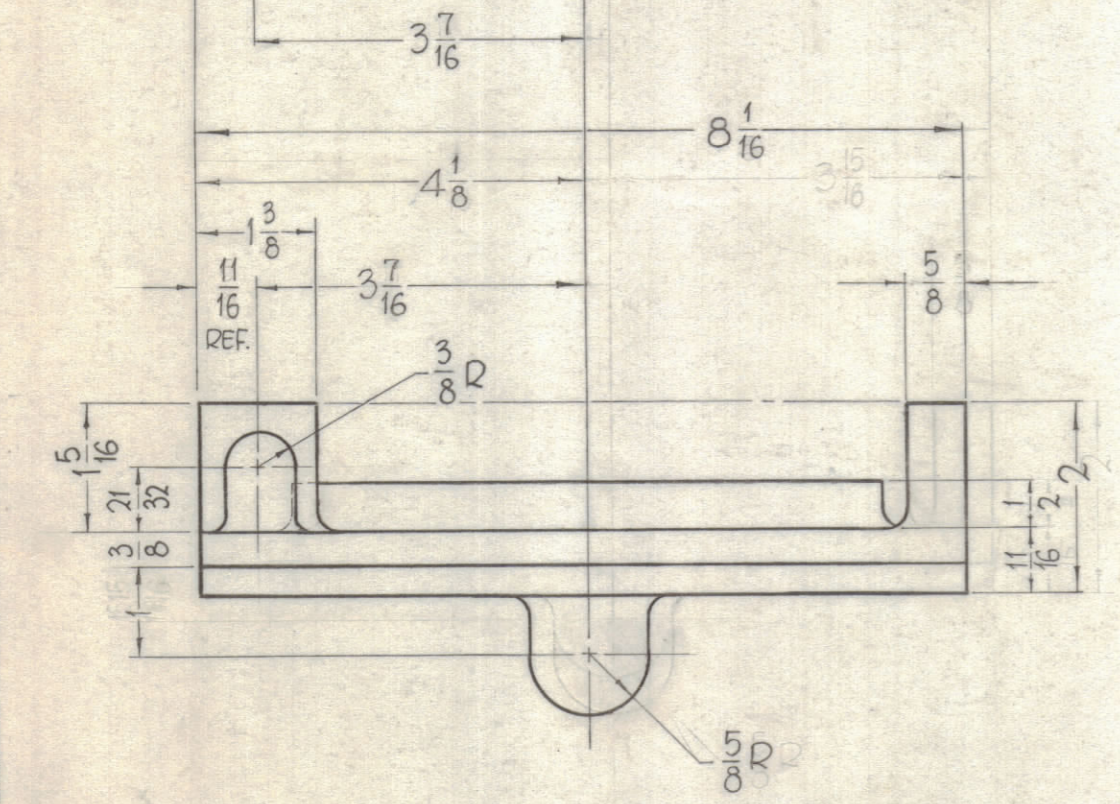
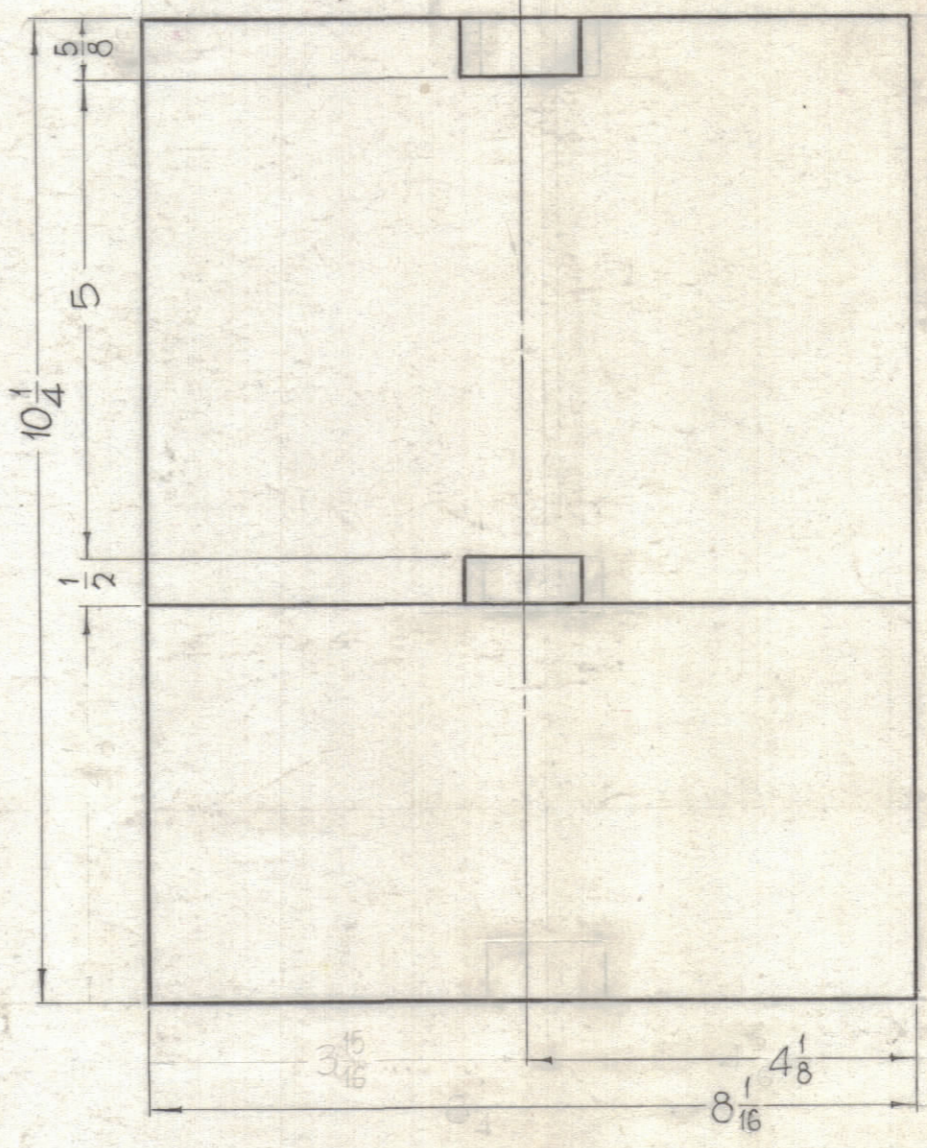
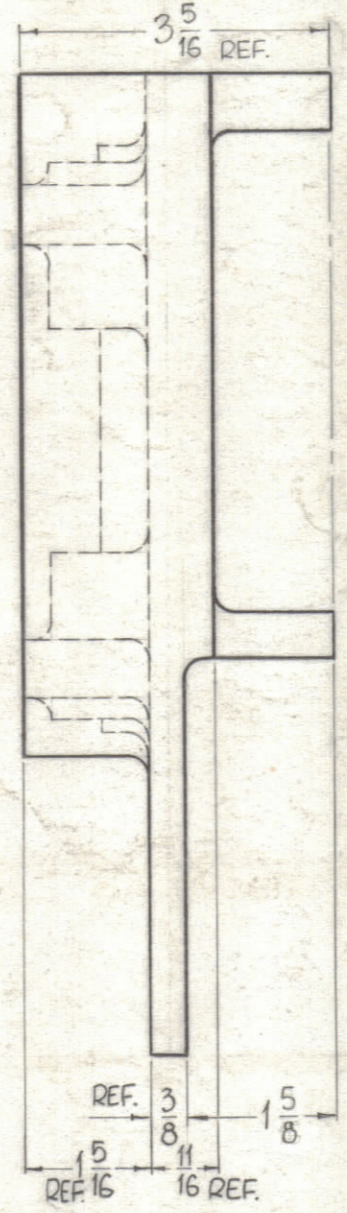
REVISIONS							
ZONE	SYM	DESCRIPTION	DATE	E.M.N. NO.	DRAFT	CHKD	APPD
	0	ORIGINAL RELEASE FOR PRODUCTION					



THIS DETAIL IS FOR POINTS "A", "B", "C" AND "D" SHOWN BELOW.



METAL STAMP TMC PART NO. 1/8 HIGH GOTHIC.



CS-127-0

DEF - MACHINING, TMC NO. PM-858

REQ'D.	ITEM	PART NUMBER	DESCRIPTION	SYMBOL
F. BUDETTI LIST OF MATERIAL				
MATERIAL SIZE, AS NOTED ALUMINUM, 356-T6			THE TECHNICAL MATERIEL CORP. MAMARONECK, NEW YORK	
FINISH			TITLE CASTING, BANDSWITCH RELEASE	
Q'TY./UNIT		MODEL USED ON	ASS'Y. NO.	
SCALE		CODE		
1		GPT-200K (A3-123)	A-2681	
UNLESS OTHERWISE SPECIFIED DIMENSIONS ARE IN INCHES AND INCLUDE CHEMICALLY APPLIED OR PLATED FINISHES			DRAWN John C Biele DATE 5-27-63 CHECKED J.A. JOE DATE 5-6-61 ELECT. DES. DATE MECH. DES. DATE	
DECIMALS .X ± .05 .XX ± .01 .XXX ± .005			FINAL APPROVAL RJC DATE 4-7-64 CS-127-0 SHEET	
FRACTIONS ± 1/64 ANGLES ± 0° 30'			REV. LTR.	

UNLESS OTHERWISE SPECIFIED  
ALL FILLETS AND ROUNDS 3/16 R.

NOTES

THE CONTENTS OF THIS DRAWING ARE THE EXCLUSIVE PROPERTY OF THE TECHNICAL MATERIEL CORP. ITS UNAUTHORIZED USE OR REPRODUCTION IN WHOLE OR IN PART IS STRICTLY FORBIDDEN.

7

6

5

4

3

2

1