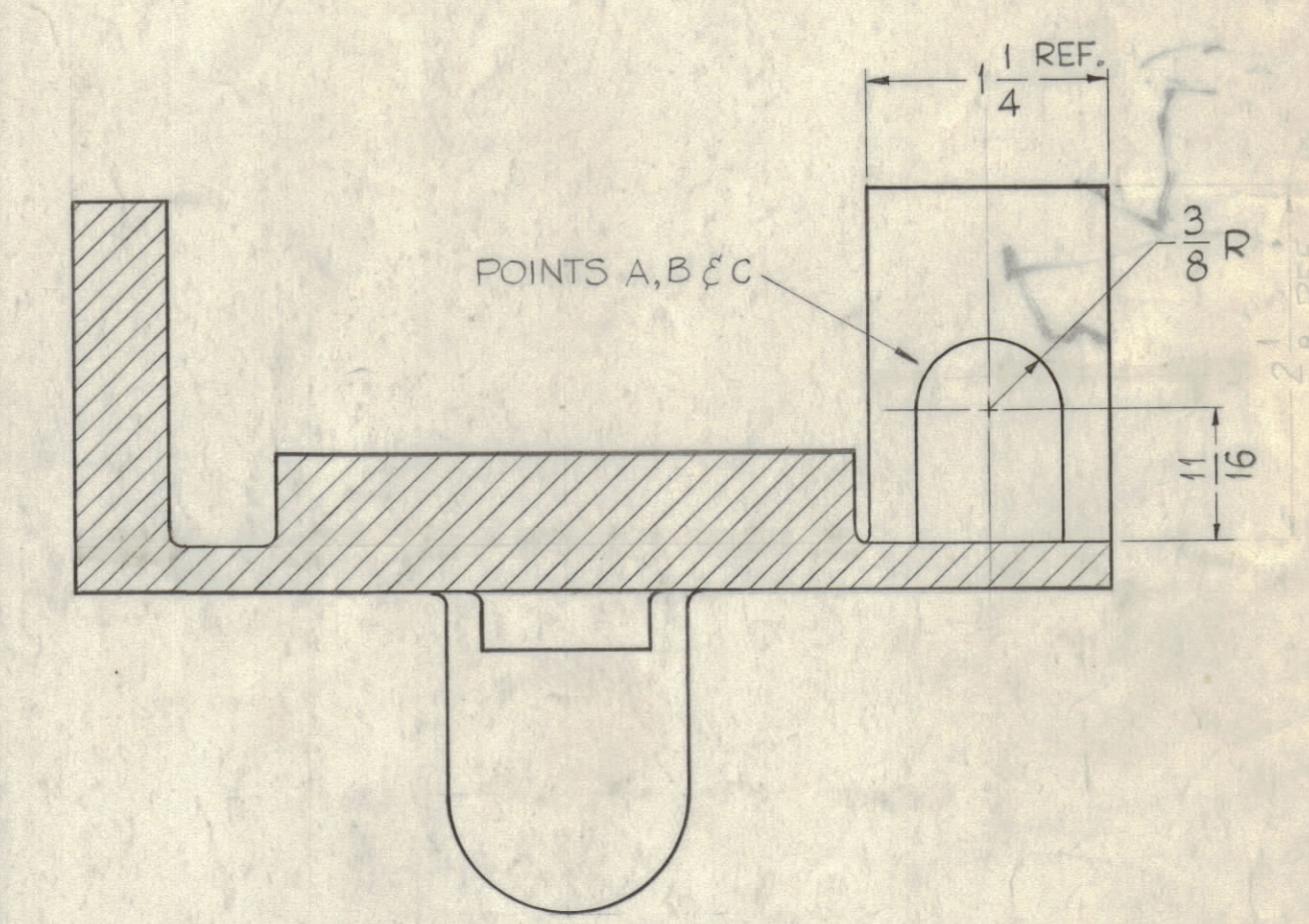
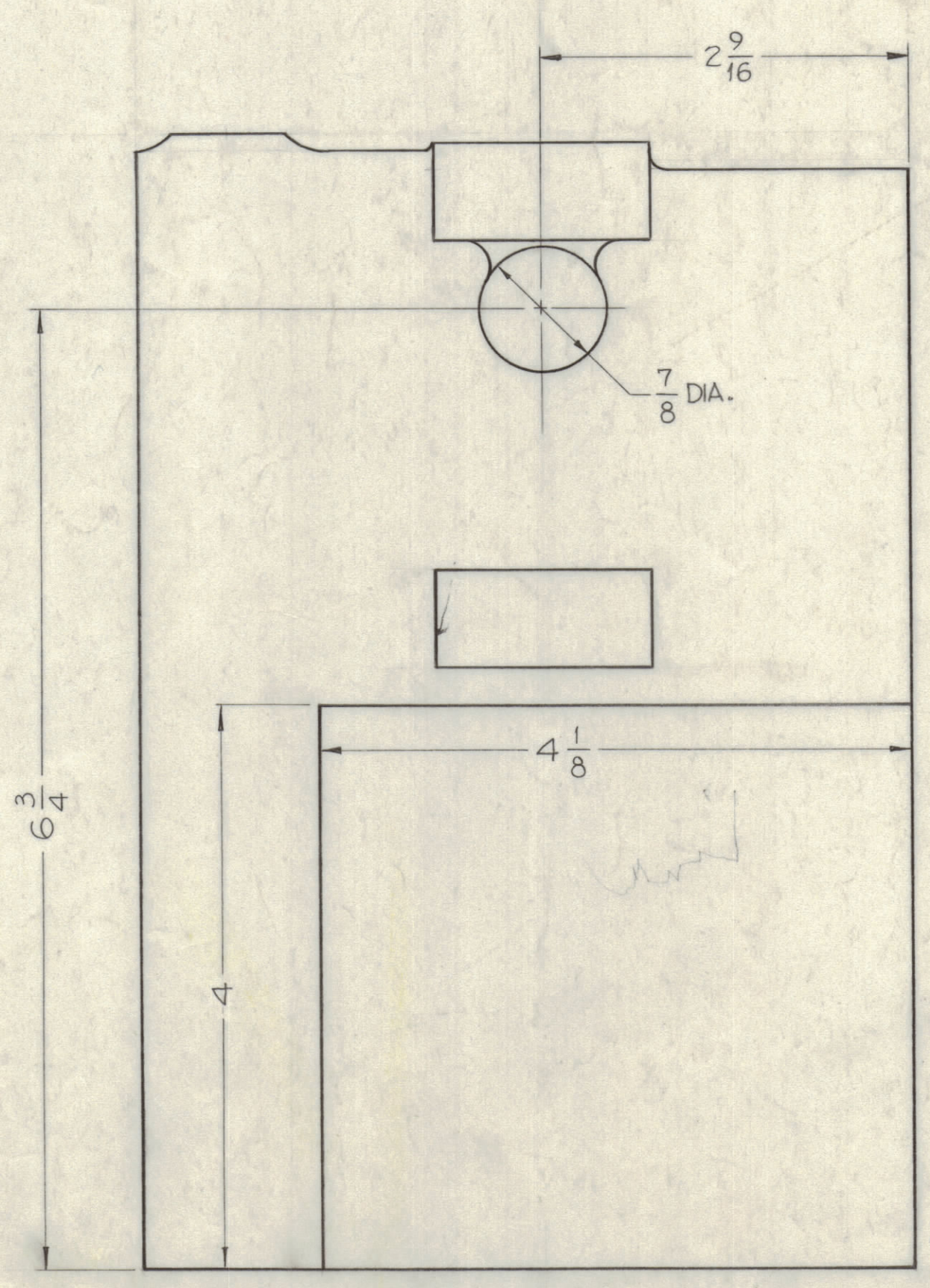
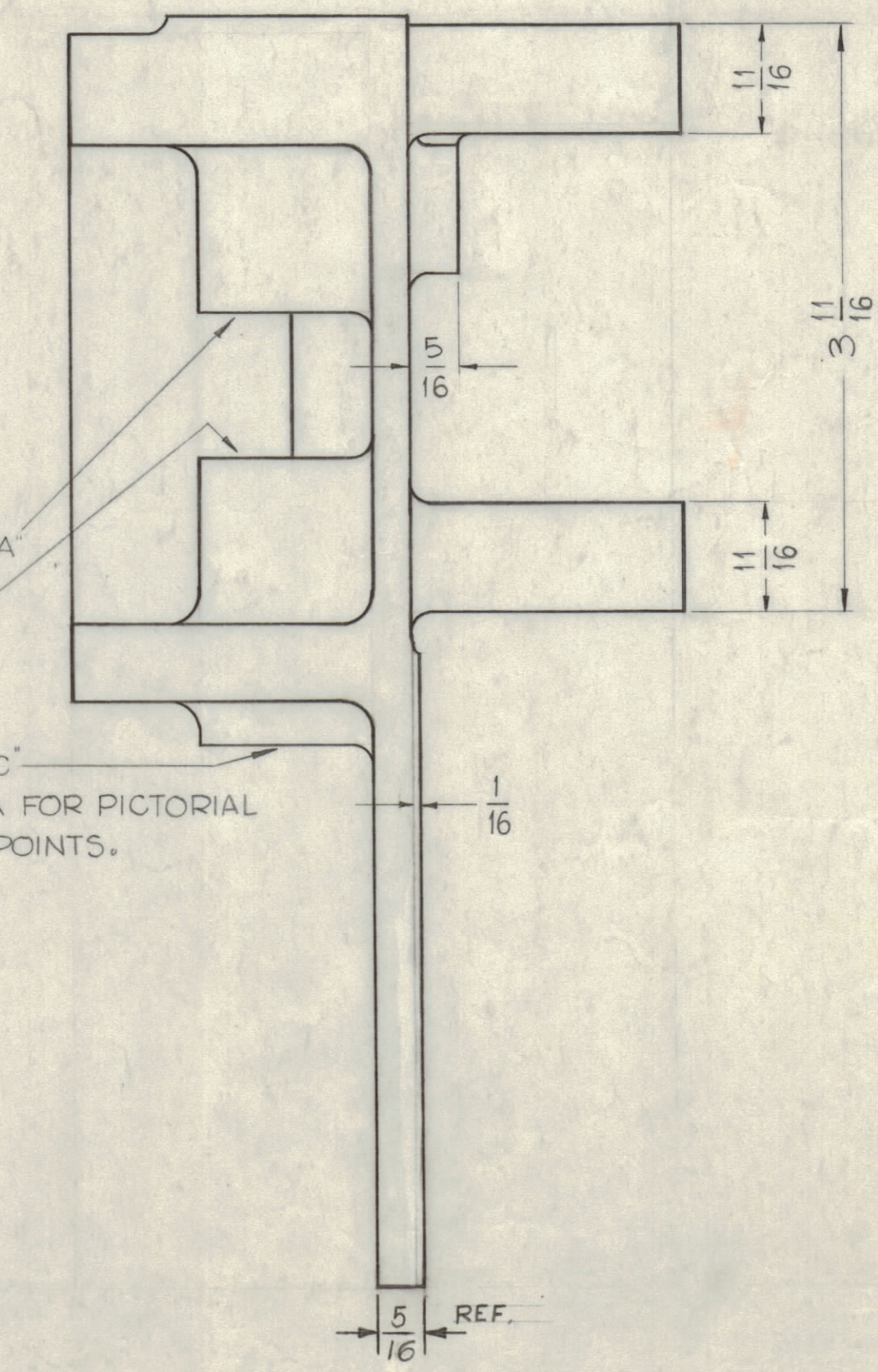
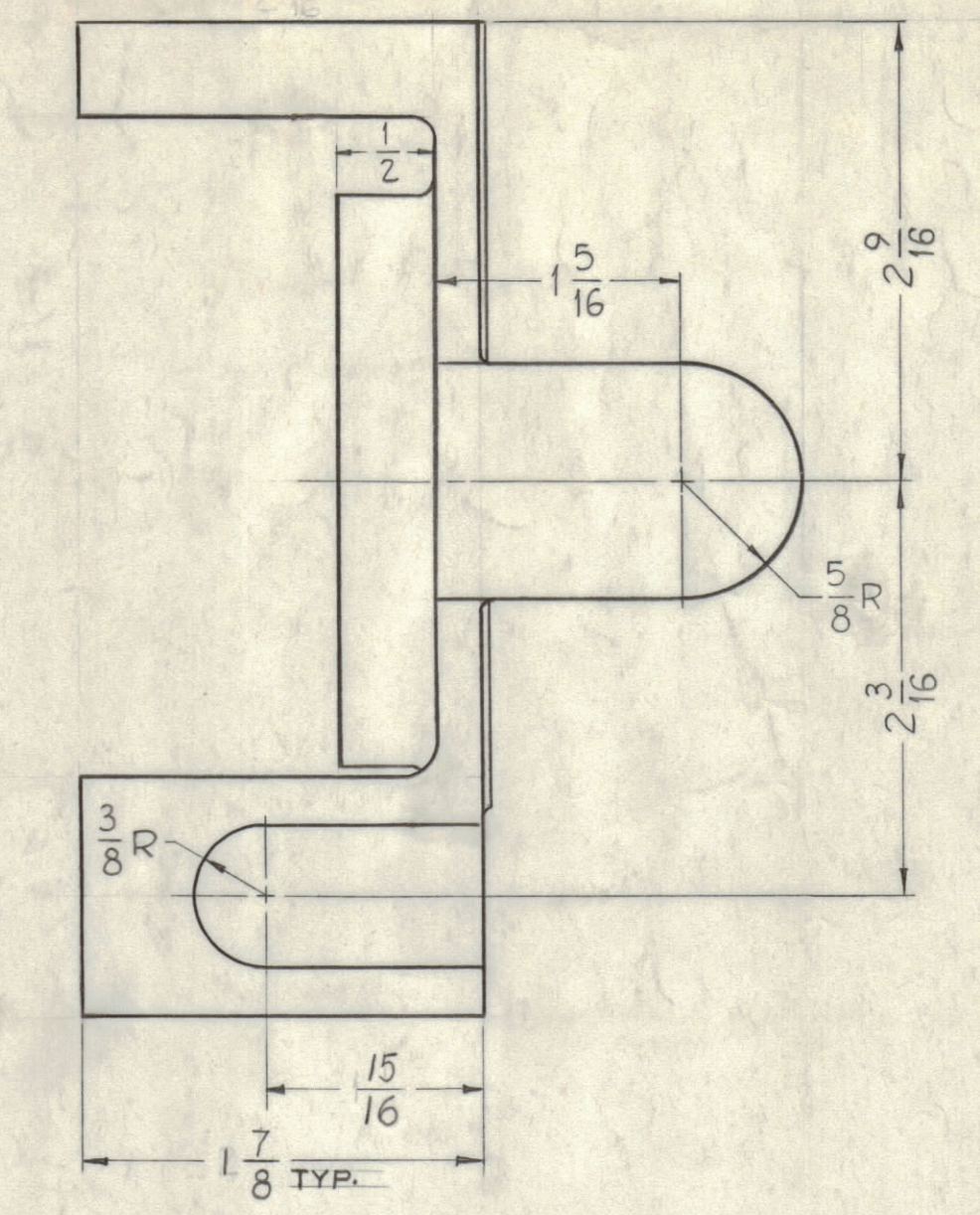
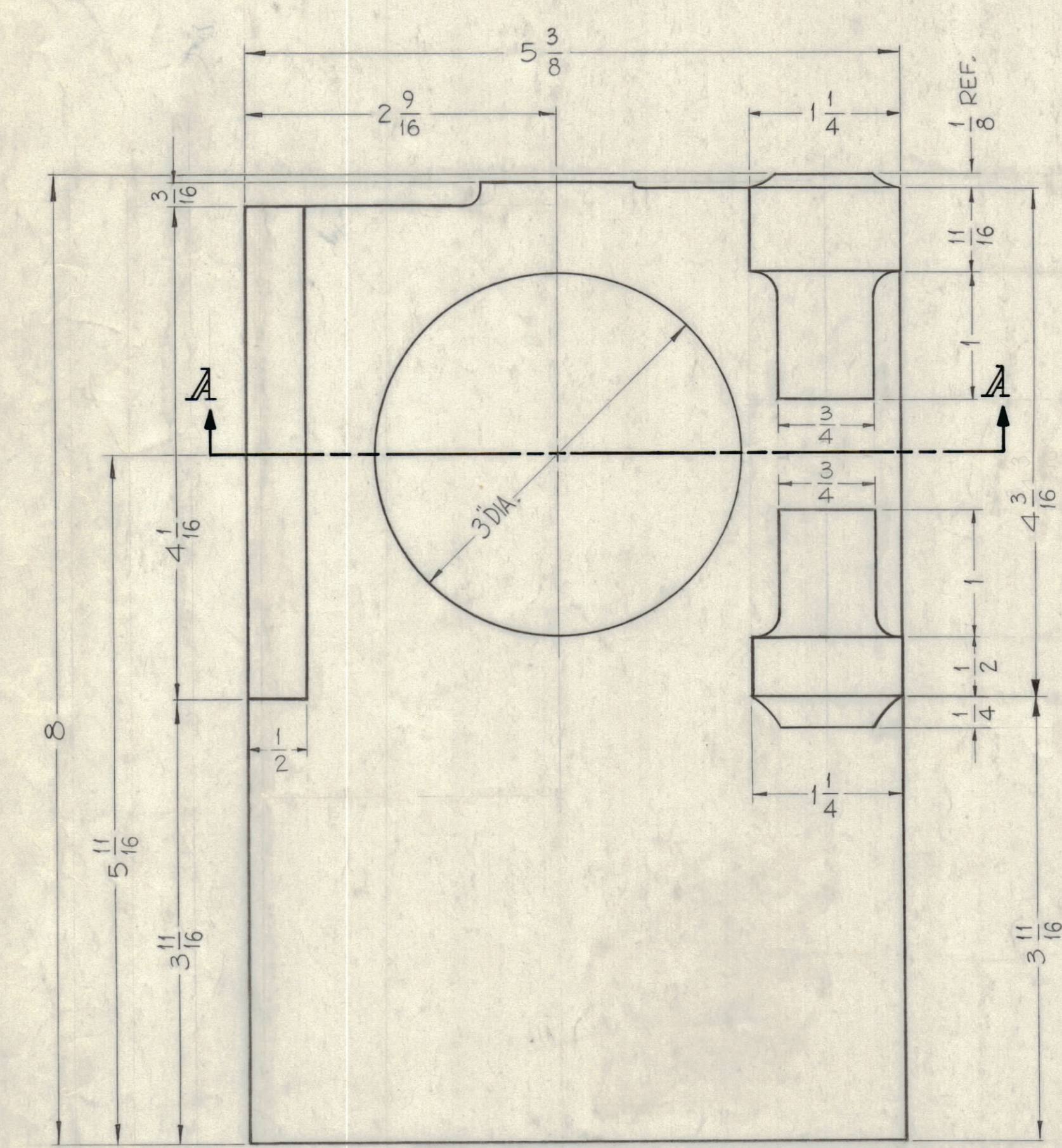


NOTICE TO PERSONS RECEIVING THIS DRAWING

THE TECHNICAL MATERIEL CORPORATION claims proprietary right in the material disclosed hereon. This drawing is issued in confidence for engineering information only and may not be reproduced or used to manufacture anything shown hereon without permission from THE TECHNICAL MATERIEL CORPORATION to the user. This drawing is loaned for mutual assistance and is subject to recall at any time.

Property of:
THE TECHNICAL MATERIEL CORPORATION
MAMARONECK, NEW YORK



SECTION-A-A

SEE SECTION A-A FOR PICTORIAL OF THESE THREE POINTS.

REV	DATE	BY	CHKD	DESCRIPTION
B	4-14-64	AM	HO	DIM. CHGDS. TO CONFORM W/ EXISTING CAST.
A	6-19-63	AM	HO	3/8 & 1/4 DIMS CLARIFIED

UNLESS OTHERWISE SPECIFIED:
DIMENSIONS ARE IN INCHES
TOLERANCES ON
FRACTIONS ± 1/64 DECIMALS ± .005 ANGLES ± 1/2°

SCALE: Full, Do Not Scale

MAXIMUM ALLOWABLE TOLERANCES HAVE BEEN DETERMINED AND ANY DEVIATIONS WILL BE CAUSE FOR REJECTION. REMOVE ALL BURRS & SHARP EDGES

REF: MACHINING, TMC DWG. NO. PM-661

REQ. PER UNIT	MODEL	SECTION	ASS'Y. NO.	DATE	MATERIAL	TYPE & TEMPER	HEAT TREAT. SPEC.	ELEC. DES. APP.	MECH. DES. APP.	SHEET OF
	GPT-200K	AX-395	AS-124	4-14-64	356-T6					CS-125 B
	GPT-40K	AX-275	AS-125	1-31-61						

CS-125 B