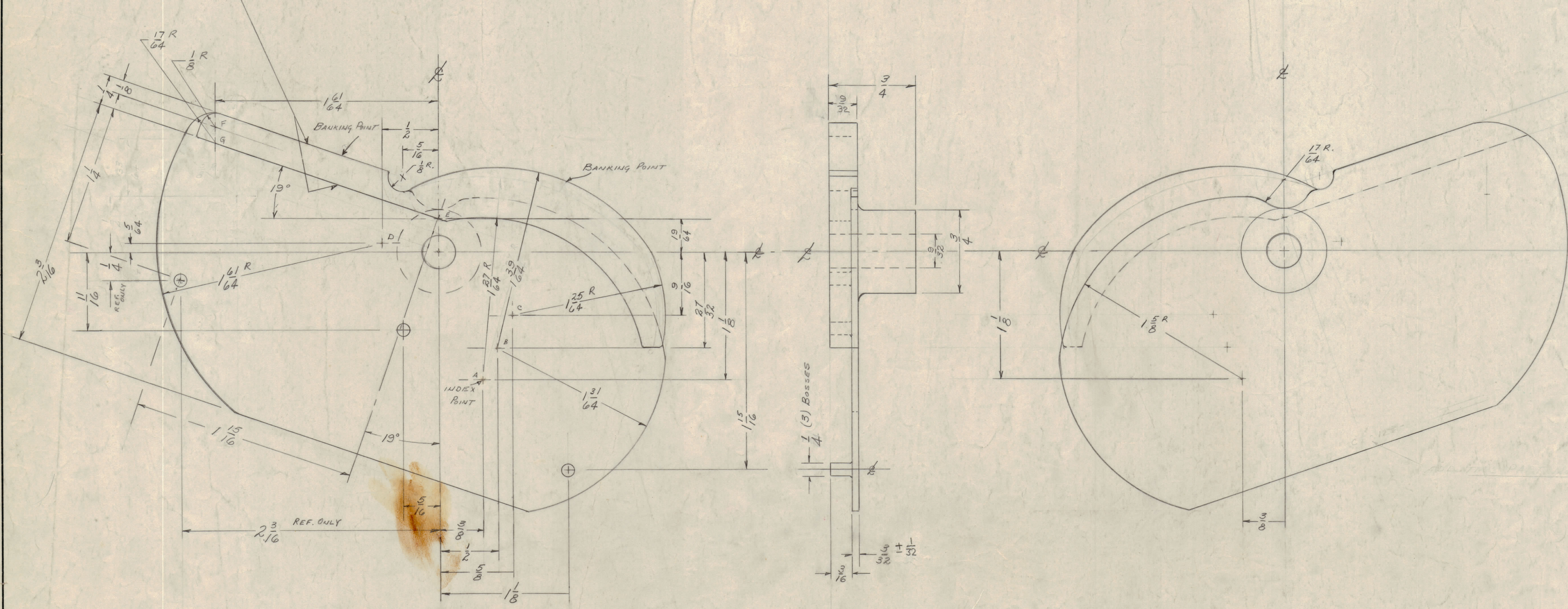


IF IT IS FOUND DESIRABLE TO CHANGE ANY TOLERANCE OR OTHER DETAIL SPECIFIED ON THIS DRAWING NOTIFY THE PURCHASER PROMPTLY.  
 MAXIMUM ALLOWABLE TOLERANCES HAVE BEEN DETERMINED AND DEVIATIONS WILL BE CAUSE FOR REJECTION. REMOVE ALL BURRS AND SHARP EDGES

NOTICE TO PERSONS RECEIVING THIS DRAWING  
 THE TECHNICAL MATERIEL CORPORATION claims proprietary right in the material disclosed hereon. This drawing is issued in confidence for engineering information only and may not be reproduced or used to manufacture anything shown hereon without permission from THE TECHNICAL MATERIEL CORPORATION to the user. This drawing is loaned for mutual assistance and is subject to recall at any time.  
 Property of:  
 THE TECHNICAL MATERIEL CORPORATION  
 MAMARONECK, NEW YORK

NOTE: PARTICULAR ATTENTION MUST BE GIVEN THIS SECTION. IT MUST BE AS FREE OF NICKS OR CASTING DEFECTS AS POSSIBLE.



NOTE:  
 CASTING TO BE STRESS-RELIEVED.  
 CASTING TO BE FREE OF POROSITY, SAND HOLES AND ALL SURFACES SMOOTH.  
 KEEP ALL FILLETS TO MIN.  
 A, B, C, D, E, F & G ARE INDEX POINTS

|            |   |  |  |                |         |           |    |
|------------|---|--|--|----------------|---------|-----------|----|
| D          | 1 | DN PICT. ±1/32" Tol. ADD                                   | 10/23/58   | 12666          | 8P      | A         | 57 |
| C          | 2 | 1 1/2" dia was 1 3/4" dia INDEXED                          | 11/10/58   |                |         |           |    |
|            | 3 | 1 3/4" dia was 1 1/2" dia                                  |  |                |         |           |    |
| B          | 1 | 5/16" Thickness was 1/4"                                   | 8/29/58  |                | acc     |           |    |
| A          | 1 | 1 1/2" dia was 2" dia 2 1/2" dia was 2 3/8" dia            | 9/15/58  |                | acc     |           |    |
| ISSUE ITEM |   | CHANGED FROM   | DATE   | CN. NO. DRAFTS | CHECKER | ENG. APP. |    |
|            |   | TOLERANCES   |  | SCALE: 2X      |         |           |    |
| ALL OTHERS |   | DEC. DIM. ± 1/64<br>FRAC. DIM. ± 1/64<br>ANGULAR DIM. ± 1' | DRILL PUNCH, COMMERCIAL STOCK SIZES AND MANUFACTURERS TOLERANCES ARE NOT INCLUDED. |                |         |           |    |

|              |             |             |           |
|--------------|-------------|-------------|-----------|
| 1            | RTF         | A           | 8-20-58   |
| 1            | VOK-1E-2    | A           | 8-20-58   |
| 1            | PMO-1, 2E-3 | A           | 8-20-58   |
| REQ PER UNIT | MODEL       | PROJECT NO. | ASSY. NO. |
|              |             |             | DATE      |
|              | USED ON     |             |           |

|                         |          |                 |                 |
|-------------------------|----------|-----------------|-----------------|
| REF: TMC # PM-500 - (4) |          |                 |                 |
| REQ. ITEM               | PART NO. | DESCRIPTION     | SYMBOL          |
| STOCK SIZE              |          |                 |                 |
| BRONZE                  |          | CP0             | CAM CASTING     |
| MATERIAL                |          | WEIGHT PER PC   |                 |
| TYPE & TEMPER           |          |                 |                 |
| DRAWN                   |          | ELEC. DES. APP. | MECH. DES. APP. |
| HEAT TREAT. SPEC.       |          | CHECKED         | FINAL APPROVAL  |
|                         |          | 05-124          |                 |