

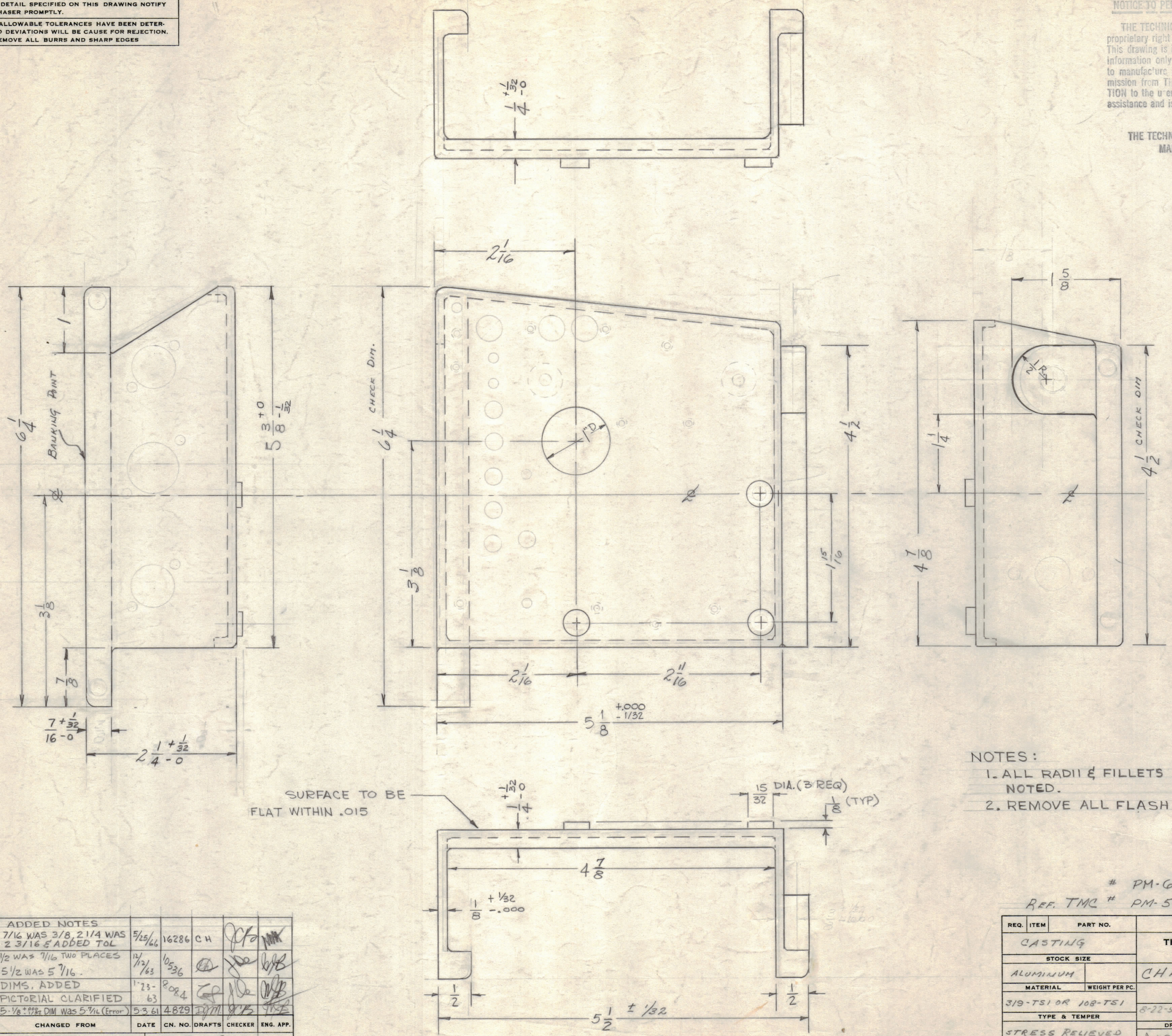
IF IT IS FOUND DESIRABLE TO CHANGE ANY TOLERANCE OR OTHER DETAIL SPECIFIED ON THIS DRAWING NOTIFY THE PURCHASER PROMPTLY.

MAXIMUM ALLOWABLE TOLERANCES HAVE BEEN DETERMINED AND DEVIATIONS WILL BE CAUSE FOR REJECTION. REMOVE ALL BURRS AND SHARP EDGES

NOTICE TO PERSONS RECEIVING THIS DRAWING

THE TECHNICAL MATERIEL CORPORATION claims proprietary right in the material disclosed hereon. This drawing is issued in confidence for engineering information only and may not be reproduced or used to manufacture any thing shown hereon without permission from THE TECHNICAL MATERIEL CORPORATION to the user. This drawing is loaned for mutual assistance and is subject to recall at any time.

Property of:
THE TECHNICAL MATERIEL CORPORATION
 MAMARONECK, NEW YORK



CS-123 D

- NOTES:
1. ALL RADII & FILLETS $\frac{1}{8}$ UNLESS OTHERWISE NOTED.
 2. REMOVE ALL FLASH.

PM-619
 REF. TMC # PM-501

ISSUE	ITEM	CHANGED FROM	DATE	CN. NO.	DRAFTS	CHECKER	ENG. APP.
D		ADDED NOTES 7/16 WAS 3/8, 2 1/4 WAS 2 3/16 & ADDED TOL	5/25/66	16286	CH		
C	1	1/2 WAS 7/16 TWO PLACES 5/2 WAS 5 7/16	11/2/63	10536			
B	2	DIMS. ADDED	1-23-	8084			
A	1	PICTORIAL CLARIFIED	63				
A	1	5-1/8 ± .002 DIM WAS 5 3/16 (Error)	5-3-61	4829			

TOLERANCES		SCALE: FULL SIZE
ALL OTHERS	DEC. DIM. ± AS SHOWN FRAC. DIM. ± AS SHOWN ANGULAR DIM. ±	DRILL, PUNCH, COMMERCIAL STOCK SIZES AND MANUFACTURERS TOLERANCES ARE NOT INCLUDED.

REQ PER UNIT	MODEL	PROJECT NO.	ASS'Y. NO.	DATE

REQ. ITEM	PART NO.	DESCRIPTION	SYMBOL
CASTING		THE TECHNICAL MATERIEL CORP. MAMARONECK, NEW YORK	
STOCK SIZE			
ALUMINUM		CHASSIS, OVEN CASTING	
MATERIAL		WEIGHT PER PC.	
319-TS1 OR 108-TS1			
TYPE & TEMPER		8-22-58 arc	
STRESS RELIEVED		DRAWN	
HEAT TREAT. SPEC.		ELEC. DES. APP.	
SAND BLAST		MECH. DES. APP.	
FINISH & SPEC. NO.		CHECKED	
		FINAL APPROVAL	
		CS-123 D	