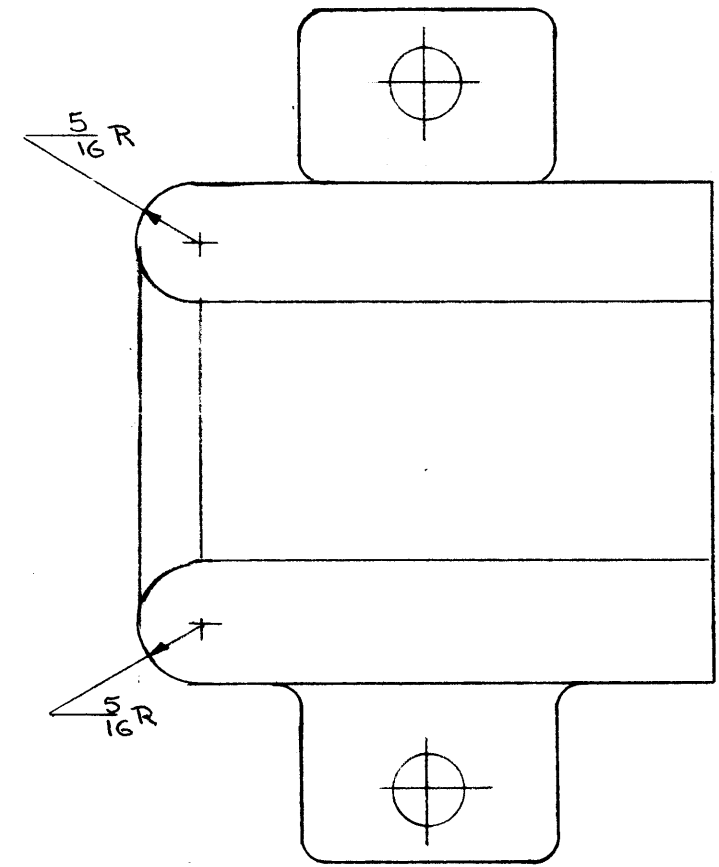
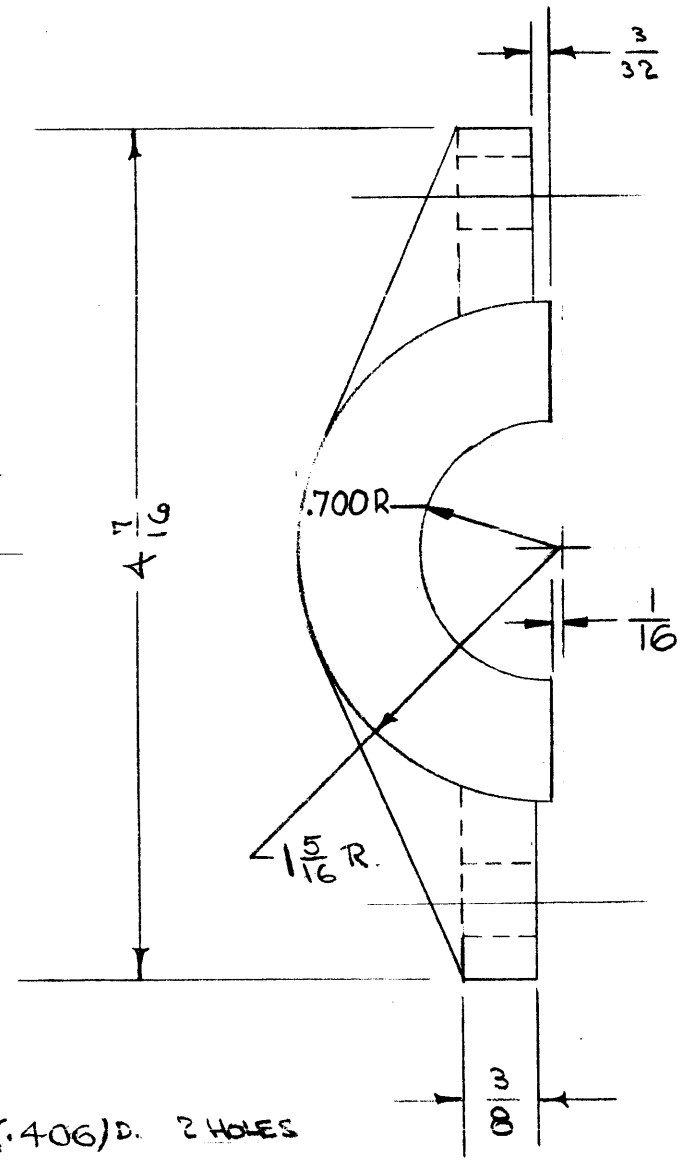
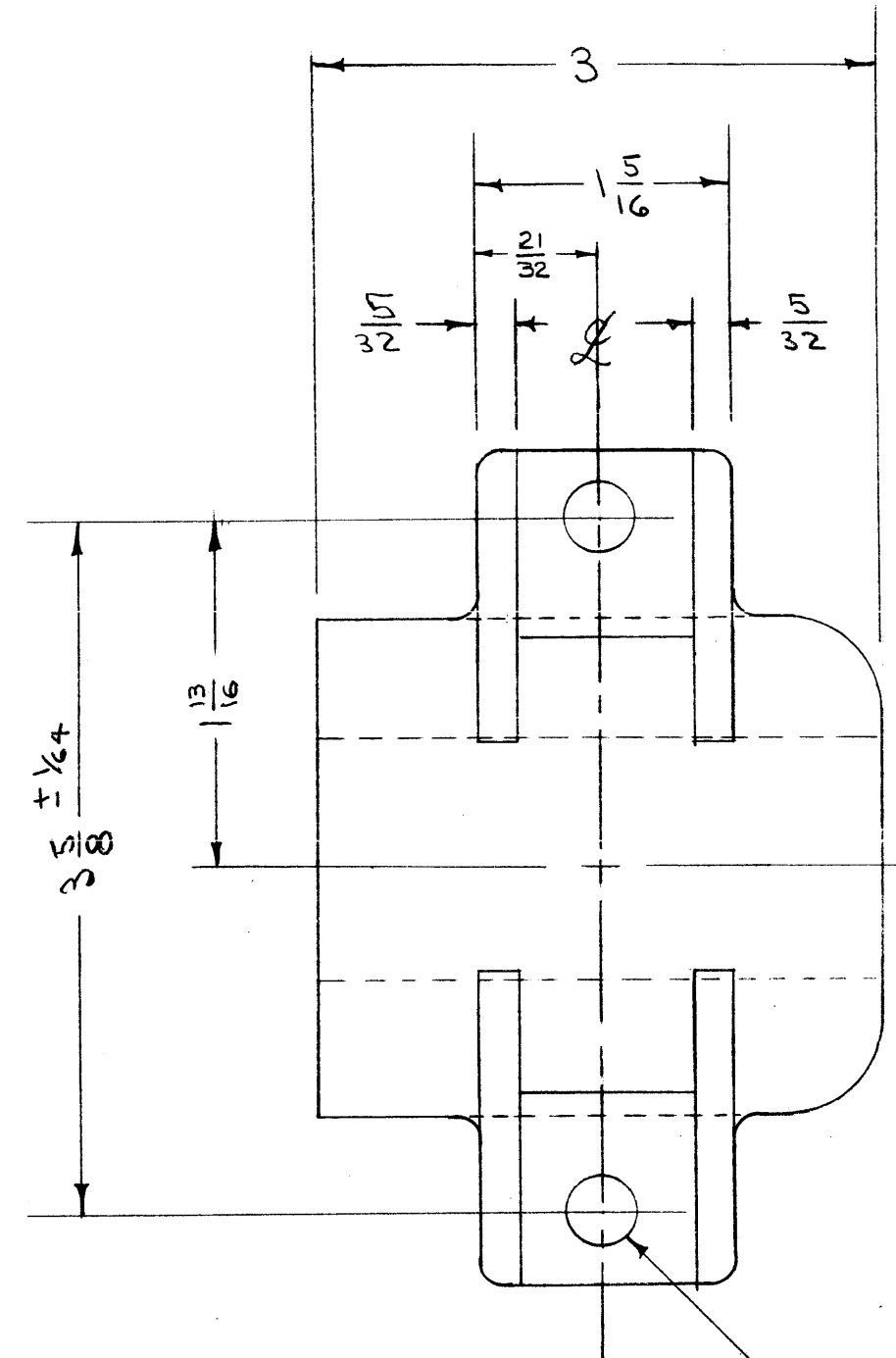


IF IT IS FOUND DESIRABLE TO CHANGE ANY TOLERANCE OR OTHER DETAIL SPECIFIED ON THIS DRAWING NOTIFY THE PURCHASER PROMPTLY.

MAXIMUM ALLOWABLE TOLERANCES HAVE BEEN DETERMINED AND DEVIATIONS WILL BE CAUSE FOR REJECTION. REMOVE ALL BURRS AND SHARP EDGES

CS-117C

NOTE:
 ALL FILLETS TO BE 3/32" RADIUS.
 CASTING TO BE STRESS RELIEVED.
 SAND BLAST ALL SURFACES.
 CASTING MUST BE FREE OF POROSITY, AIR HOLES & ALL SURFACES TO BE SMOOTH.



13/32 (.406) D. 2 HOLES

C	1	.700R Was 11/16R; 1/16 Dim. Added	2-15-62	6366	LB	<i>[Signature]</i>	<i>[Signature]</i>
B	2	NOTES ADDED	2/4/57	2	<i>[Signature]</i>	<i>[Signature]</i>	<i>[Signature]</i>
A	1	FINISH MARKS REMOVED	4/29/57	1	SC. <i>[Signature]</i>	<i>[Signature]</i>	<i>[Signature]</i>
	2	HOLE LOCATIONS CLARIFIED					
A	1	FINISH (V) MARKS ADDED					

TOLERANCES		SCALE: 1" = 1"
ALL OTHERS	DEC. DIM. ± FRAC. DIM. ± 1/32 ANGULAR DIM. ±	DRILL, PUNCH, COMMERCIAL STOCK SIZES AND MANUFACTURERS TOLERANCES ARE NOT INCLUDED.

2	ES-85/U	J-227	A-882	4-27-54
REQ. PER. UNIT	MODEL	PROJECT NO.	ASS'Y. NO.	DATE
USED ON				

REQ. ITEM	PART NO.	DESCRIPTION	SYMBOL
CASTING		THE TECHNICAL MATERIEL CORP.	
STOCK SIZE		MAMARONECK. NEW YORK	
PHOSPHOR BRONZE	#	CLAMP, FORMING	
MATERIAL	WEIGHT PER PC.		
GRADE 2			
TYPE & TEMPER		C.D.D. 4-27-54	
HEAT TREAT. SPEC.		DRAWN <i>[Signature]</i>	ELEC. DES. APP. <i>[Signature]</i>
CADMIUM PLATED .0002		CHECKED <i>[Signature]</i>	MECH. DES. APP. <i>[Signature]</i>
FINISH & SPEC. NO.		FINAL APPROVAL	
		CS-117C	