

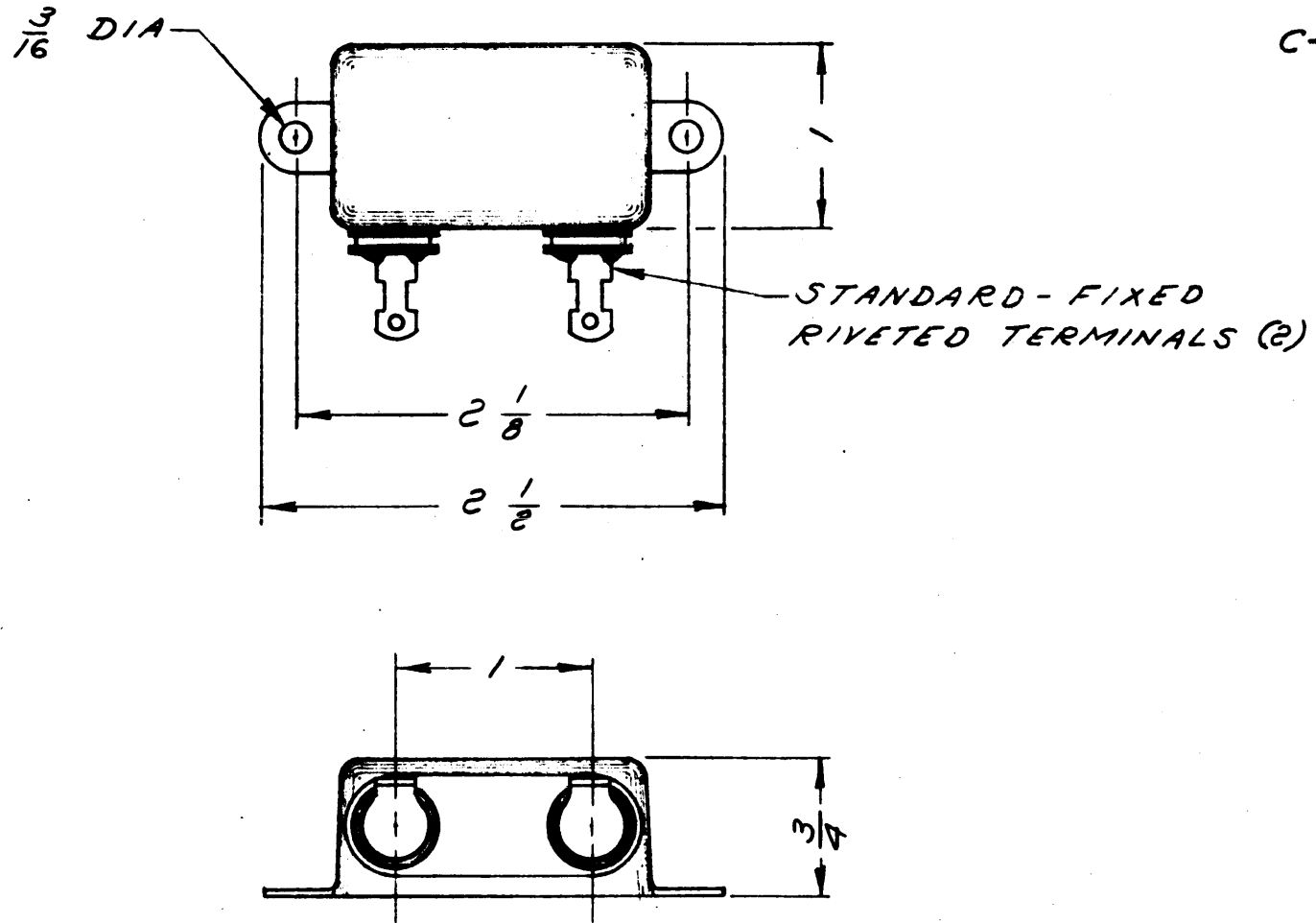
NOTICE: When Gov rnm nt drawings, specifications, or other data are used for any purpose other than in connection with a definitely related Governm nt procurement operation, the United States Governm nt thereby incurs no responsibility, nor any obligations whatsoever; and the fact that the Governm nt may have formulated, furnished, or in any way supplied the said drawings, specifications, or other data is not to be regarded by implication r otherwise as in any manner licensing the holder or any other person r corporation, or conveying any rights or permission to manufacture, use, or sell any patented invention that may in any way be related thereto.

NEXT ASSEMBLY	1 <sup>ST</sup> USED N

REVISIONS			
SYM	DESCRIPTION	DATE	APPROVAL
A	DWG. NO. WAS MB-1055	6-4-53	<i>[Signature]</i>

C-10  
 CAPACITOR, FIXED: PAPER; 85,000 MMF ± 5%; 600 VDCW; HERMETICALLY SEALED METAL CASE; MINERAL OIL FILLED, AND IMPREGNATED; TWO RIVET LUG TERMINALS, LOCATED ON SIDE, NO INTERNAL GROUND CONNECTIONS. AEROVOX TYPE 630 M

C-11  
 CAPACITOR, FIXED: PAPER; 65,000 MMF ± 5%; 600 VDCW; ETC... ETC. SAME AS C-10



NOTICE TO PERSONS RECEIVING THIS DRAWING

THE TECHNICAL MATERIEL CORPORATION claims proprietary right in the material disclosed hereon. This drawing is issued in confidence for engineering information only and may not be reproduced or used to manufacture anything shown hereon without permission from THE TECHNICAL MATERIEL CORPORATION to the user. This drawing is loaned for mutual assistance and is subject to recall at any time.

Property of:  
 THE TECHNICAL MATERIEL CORPORATION  
 MAMARONECK, NEW YORK

REQD	PART NO.	DESCRIPTION	MATL	MATL SPEC	UNIT WT.	ZONE
UNLESS OTHERWISE SPECIFIED	AUTHENTICATION		CAPACITOR  SFO-2 REGENERATOR			
DIMENSIONS ARE IN INCHES TOLERANCES FRACTIONS ± $\frac{1}{64}$ DECIMALS ± .005 ANGLES ± 10-0' COMMERCIAL TOLERANCE APPLY TO STOCK ITEMS	DRAWN <i>TMC</i>					
	TRACED					
	CHECKED <i>TMC</i>					
	VERIFIED					
	APPD	REVD				
	DATE <i>15 APR 1949</i>	SCALE <i>1/1</i>	THE TECHNICAL MATERIEL CORPORATION MAMARONECK, NEW YORK			
			P-100		ISSUE SYMBOL	A

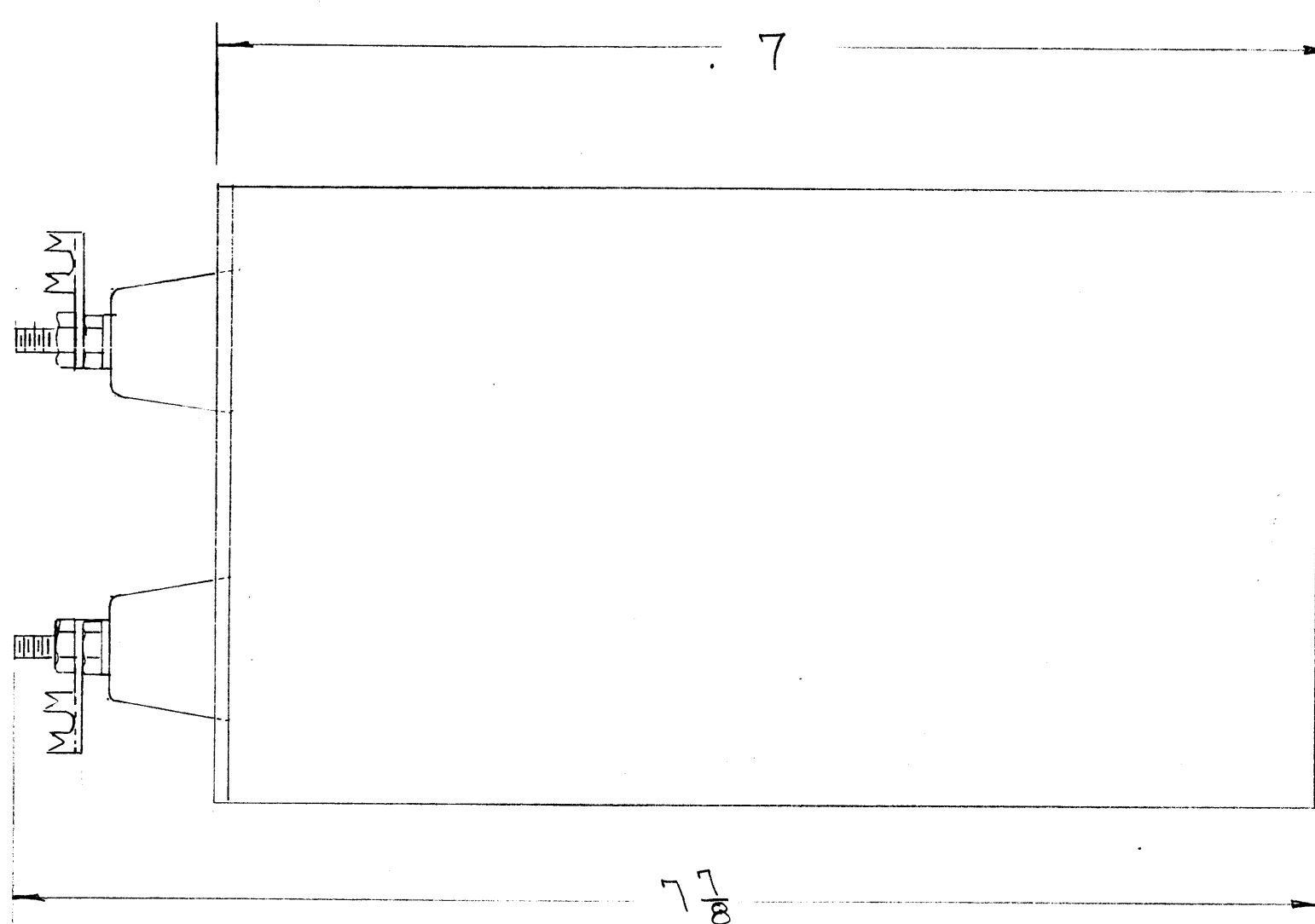
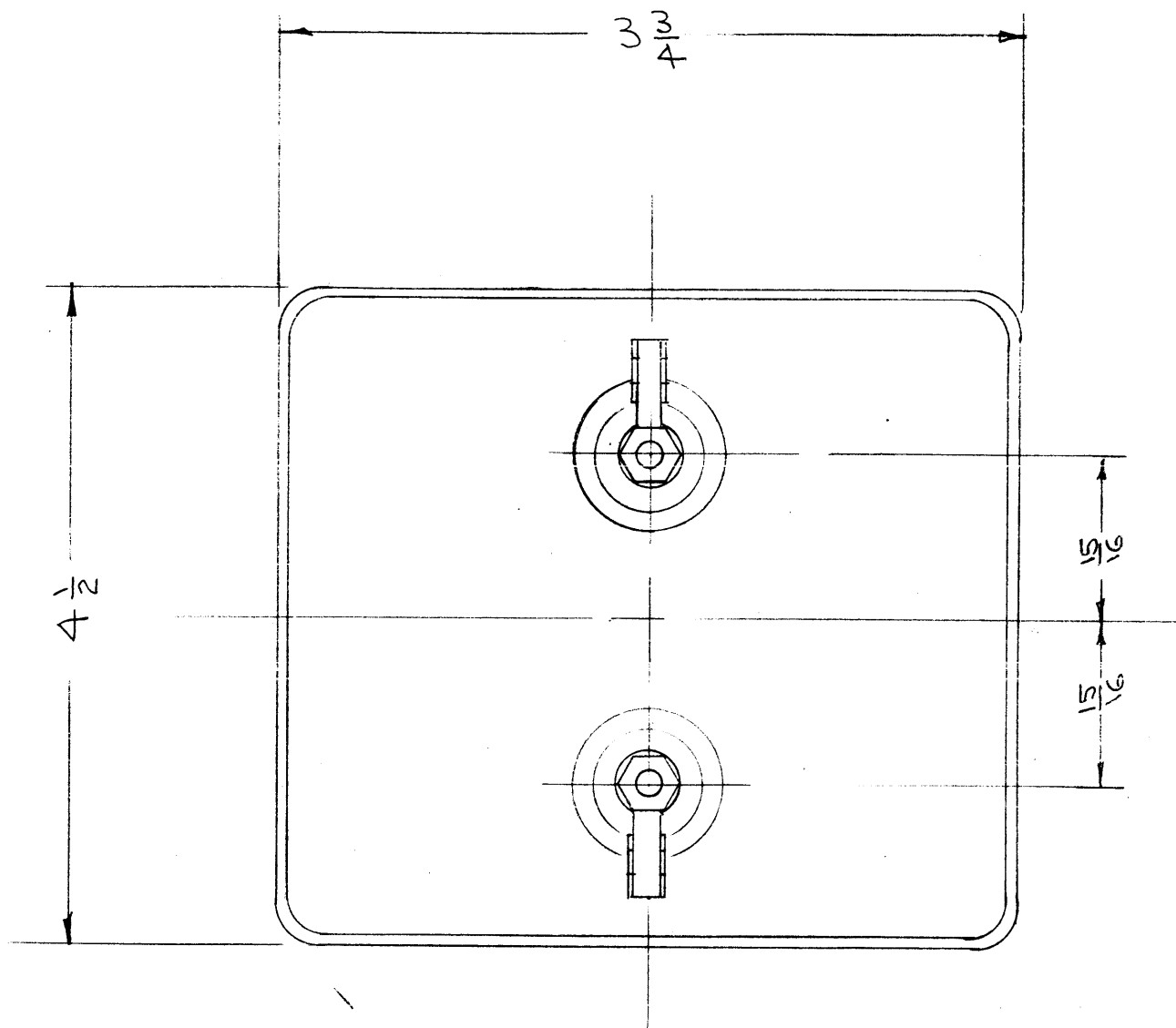
IF IT IS FOUND DESIRABLE TO CHANGE ANY TOLERANCE OR OTHER DETAIL SPECIFIED ON THIS DRAWING NOTIFY THE PURCHASER PROMPTLY.

MAXIMUM ALLOWABLE TOLERANCES HAVE BEEN DETERMINED AND DEVIATIONS WILL BE CAUSE FOR REJECTION. REMOVE ALL BURRS AND SHARP EDGES

ELECTRICAL SPECIFICATIONS

17.5 MFD  
4000 VDC

CP-101



NOTE:  
Dimensions For Ref. Only

REF: CORNELL-DUBILIER # T-155

REQ.	ITEM	PART NO.	DESCRIPTION	SYMBOL
			THE TECHNICAL MATERIEL CORP.	
STOCK SIZE			MAMARONECK. NEW YORK	
			CAPACITOR, FIXED	
MATERIAL			PAPER, PHOTOFLASH	
WEIGHT PER PC.				
TYPE & TEMPER				
HEAT TREAT. SPEC.				
FINISH & SPEC. NO.				

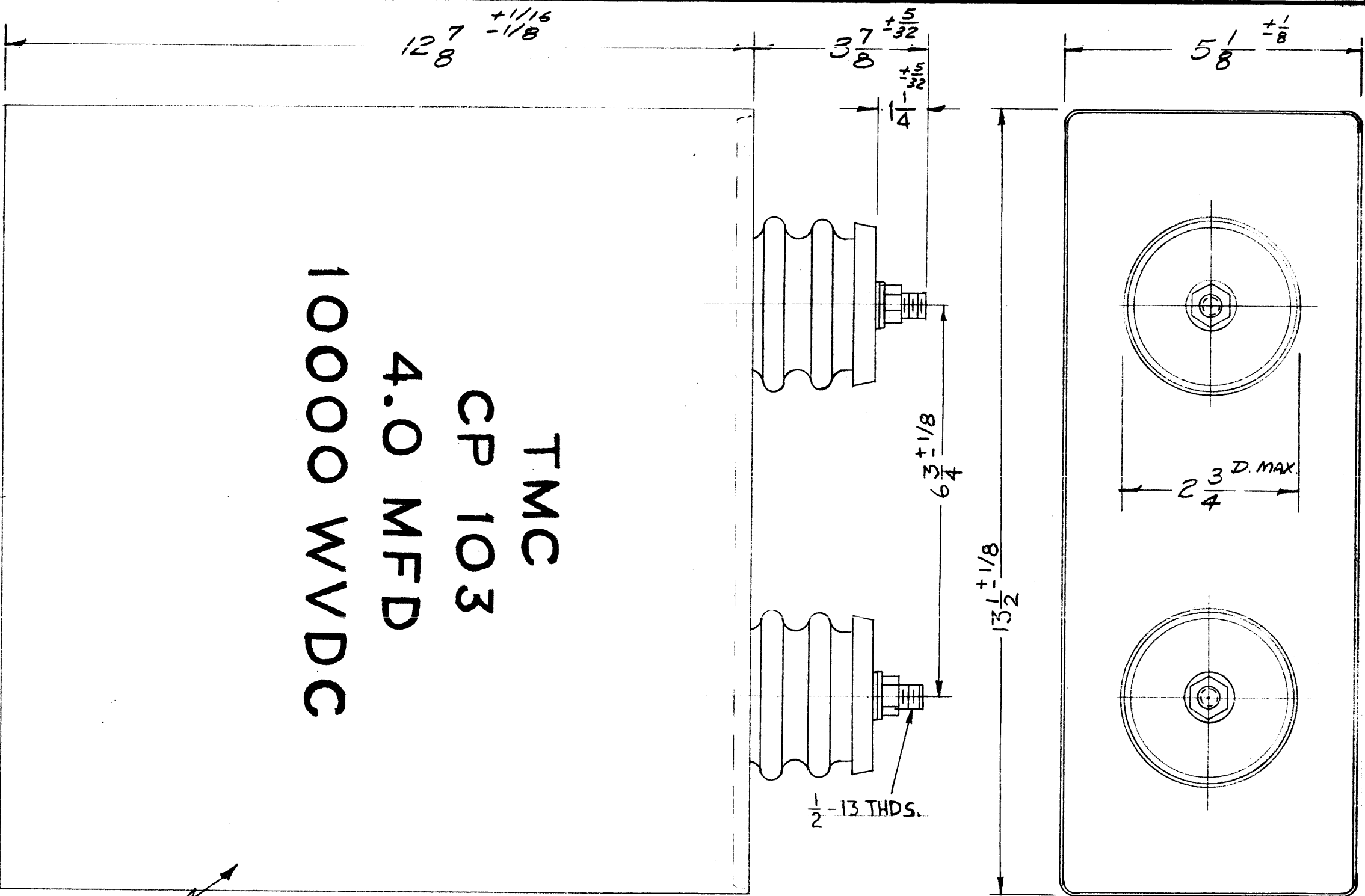
ISSUE	ITEM	CHANGED FROM	DATE	CN. NO.	DRAFTS	CHECKER	ENG. APP.
TOLERANCES		SCALE:					
ALL OTHERS	DEC. DIM. ± FRAC. DIM. ± ANGULAR DIM. ±	DRILL, PUNCH, COMMERCIAL STOCK SIZES AND MANUFACTURERS TOLERANCES ARE NOT INCLUDED.					

MODEL	PROJECT NO.	ASS'Y. NO.	DATE
	ECOLE		8-26-53

USED ON

CP-101

CP 103 C



TMC  
CP 103  
4.0 MFD  
10000 WVDC

SPECIFICATIONS

CASE: Metallic, uninsulated, hermetically sealed.  
 MAXIMUM ALTITUDE: 7,500 feet at rated voltage.  
 TERMINALS: Two pillar insulators 1/2-13 NC2A thread shall be supplied with one nut, one flat washer, and one lock-washer per terminal.  
 TERMINAL STRENGTH: 10 pounds pull (MIN.) 20 pounds torque (MIN.)  
 CAPACITANCE: 4.0 microfarads ±10%  
 WORKING VOLTAGE: 10,000 VDC  
 ALLOWABLE PEAK TO PEAK RIPPLE VOLTAGE:  
     2,500 V at 60 cps  
     1,800 V at 120 cps  
     200 V at 10,000 cps  
 TEMPERATURE RANGE: -10°C to +60 C  
 VIBRATION: 10 to 55 cps  
 DISSIPATION FACTOR: Less than 1%  
 INSULATION RESISTANCE:  
     Terminal to Terminal-400MΩ mfd @25 C  
     Terminals to Case-3,000MΩ Mininum  
 DIELECTRIC WITHSTANDING VOLTAGE:  
     Terminal to Terminal-20kv for 15 sec.  
     Terminals to case-21kv for 15 sec.  
 MAX. ALLOWABLE RMS CURRENT: 15 AMPS  
 APPLICABLE SPECIFICATIONS:  
 MIL-C-25(CP-D1-S405K2)

STAMP AS SHOWN APPROX. 1/2 HIGH - BLACK

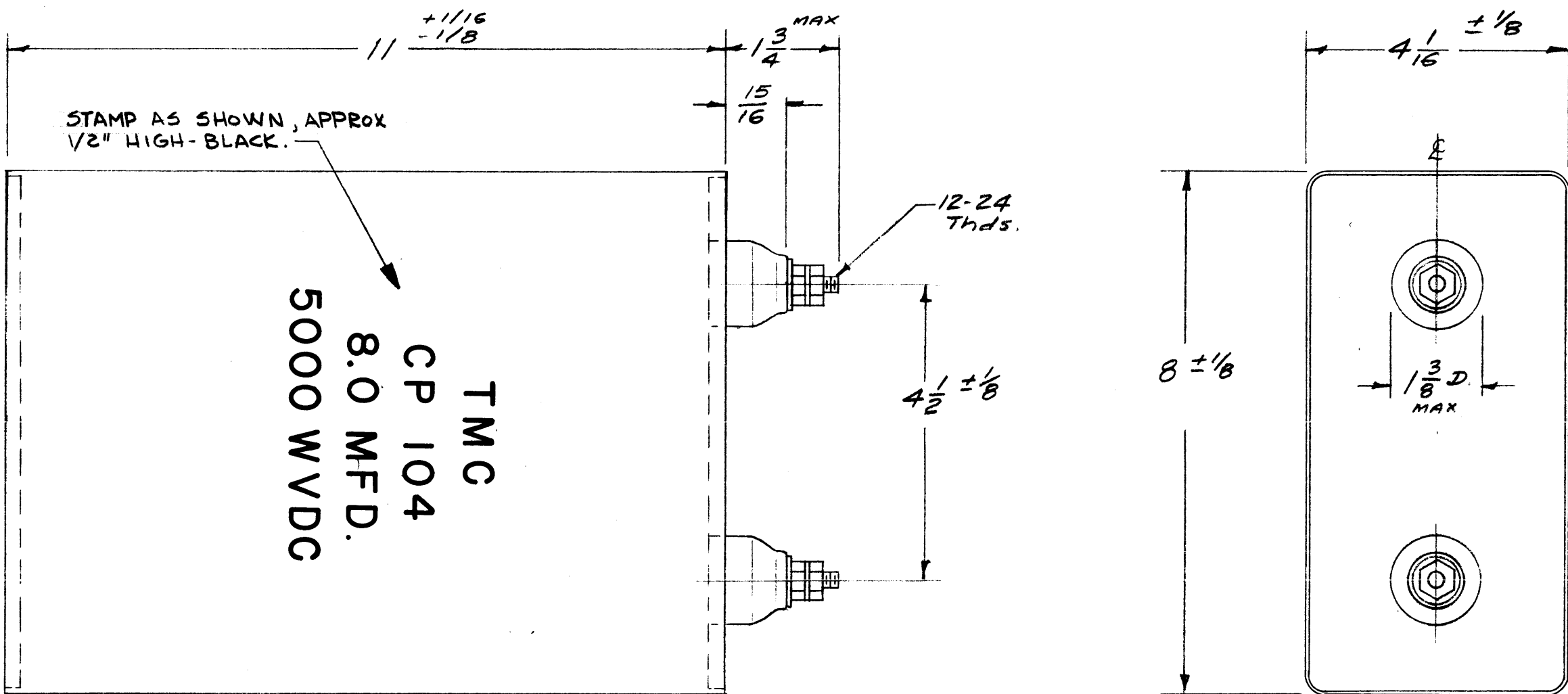
ISSUE	ITEM	CHAN ED FROM	DATE	CH. NO.	DRAFTS	CHECKER	ENG. APP.
C		SPECS ADD. P/N HYPERNS DELE; FINISH NOTE ADD; CAP, VOLT, & FINISH NOTES DELE.	1-12-65	13236	92.	@	JPB
B	1	1 1/4 was 2 1/32 3 3/8 was 3 1/4	12-1-59	1601	SPM	HQ	JPB
A	1	1/2-13thds was 3/8-16thds	4/13/59	-	16	JPB	JPB
TOLERANCES		SCALE: 5-421-34 (71100-4)					
DEC. DIM. ±		MAXIMUM ALLOWABLE TOLERANCES HAVE BEEN DETERMINED AND ANY DEVIATIONS WILL BE CAUSE FOR REJECTION. REMOVE ALL BURRS AND SHARP EDGES					
FRAC. DIM. ±							
ANGULAR DIM. ±							

1	GPT-10K			2-26-59
REQ. PER UNIT	MODEL	PROJECT N.	ASS'Y. NO.	DATE
USED ON				

REQ. ITEM	PART NO.	DESCRIPTION	SYMBOL
THE TECHNICAL MATERIEL CORP. MAMARONECK, NEW YORK			
STOCK SIZE			
CAPACITOR, FIXED, PAPER, METAL CASE			
MATERIAL			
		16 2/24/59	JPB
TYPE & TEMPER		DRAWN	CHECKED
HEAT TREAT. SPEC.		FINAL APPROVAL	
5115 TMC GREY		CP 103 C	
FINISH & SPEC. NO.		ELEC. DES. APP.	MECH. DES. APP.

CP 104 A

NOTE:  
MANUFACTURERS  
NAME SHALL NOT  
APPEAR ON TOP OR  
SIDES OF CASE.



**SPECIFICATIONS**  
CASE: METALLIC, UNINSULATED, HERMETICALLY SEALED  
MAX. ALTITUDE: 7,000 FEET AT RATED VOLTAGE.  
TERMINALS: TWO PULLER INSULATORS 12-24NC2A  
THREAD. SHALL BE SUPPLIED WITH ONE NUT, ONE  
FLAT WASHER AND ONE LOCKWASHER PER TERMINAL.  
TERMINAL STRENGTH: 10 POUNDS PULL(MIN.) 15  
POUNDS TORQUE(MIN)  
CAPACITANCE: 8.0 mfd  $\pm 10\%$   
WORKING VOLTAGE: 5,000VDC  
ALLOWABLE PEAK TO PEAK RIPPLE VOLTAGE:  
1,250V @ 60 cps      100V @ 10,000 cps  
900V @ 120 cps

TEMP. RANGE:  $-10^{\circ}\text{C}$  TO  $+60^{\circ}\text{C}$   
VIBRATION: 10 TO 55 cps  
DISSIPATION FACTOR: LESS THAN  
1%.  
INSULATION RESISTANCE: TERM  
TO TERM.  $-400\Omega$  mfd @  $25^{\circ}\text{C}$   
MIN.  
TERM TO CASE  $-3,000\Omega$  MIN.  
DIELECTRIC WITHSTANDING  
VOLTAGE: TERM TO TERM- 10KV  
FOR 15 SEC.  
TERM TO CASE--11KV FOR 15 SEC  
MAX. ALLOWABLE RMS CURRENT:  
15 AMPS

NOTICE TO PERSONS RECEIVING THIS DRAWING

THE TECHNICAL MATERIEL CORPORATION claims  
proprietary right in the material disclosed herein.  
This drawing is loaned in confidence for engineering  
information only and may not be reproduced or used  
to manufacture any thing shown hereon without per-  
mission from THE TECHNICAL MATERIEL CORPORA-  
TION to the user. The user is loaned for mutual  
assistance and is subject to recall at any time.

APPLICABLE SPECS:  
MIL-C-25 (CP-DI-  
N805K2)

THE TECHNICAL MATERIEL CORPORATION  
MAMARONECK, NEW YORK

ISSUE	ITEM	CHANGED FROM	DATE	CH. NO.	DRAFTS	CHECKER	ENG. APP.
A	1	SPECS REVISED FINISH & NOTE ADDED	4-30-65	13922			

TOLERANCES		SCALE: 3-401-34 (7150-8)
DEC. DIM. $\pm$		MAXIMUM ALLOWABLE TOLERANCES HAVE BEEN DETERMINED AND ANY DEVIATIONS WILL BE CAUSE FOR REJECTION. REMOVE ALL BURRS AND SHARP EDGES
FRAC. DIM. $\pm$		
ANGULAR DIM. $\pm$		

REQ. PER UNIT	MODEL	PROJECT N.	ASS'Y. NO.	DATE
1	GPT-10K	T1-105 (P.S.)		4-15-59
USED ON				

REQ. ITEM	PART NO.	DESCRIPTION	SYMBOL
		THE TECHNICAL MATERIEL CORP. MAMARONECK, NEW YORK	
		STOCK SIZE	
		CAPACITOR, FIXED, PAPER, METAL CASE	
		MATERIAL	
		6/15/59	
		TYPE & TEMPER	
		HEAT TREAT. SPEC.	
		5115 SMOOTH GRAY ENAMEL	
		FINISH & SPEC. NO.	
		DRAWN	
		CHECKED	
		FINAL APPROVAL	
		ELEC. DES. APP.	
		MECH. DES. APP.	
		CP-104	A

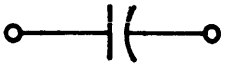


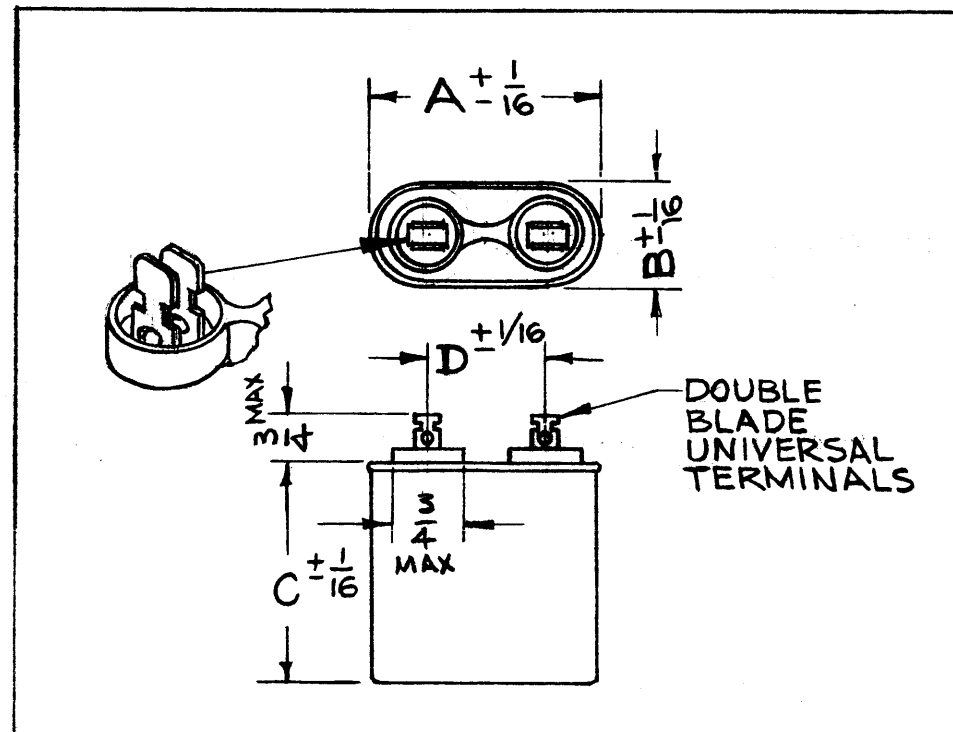
# STANDARD DRAWING

THE CONTENTS OF THIS DRAWING ARE THE EXCLUSIVE PROPERTY OF THE TECHNICAL MATERIEL CORP. ITS UNAUTHORIZED USE OR REPRODUCTION IN WHOLE OR IN PART IS STRICTLY FORBIDDEN.

TMC NO.	MFRS NO.	AT 60 CPS, 25°C ± 5°C		AC W.V. 60 CPS	A	B	C	D	RETAINING BRACKET REF
		CAP. UF	CAP. TOL%						
CP-113-1	200P1903TPI	4	±10	370	2 5/32	1 5/16	2 1/2	13/16	TMC NO. CU 143-1
CP-113-2	200P1904TPI	5	±10	370	2 5/32	1 5/16	2 7/8	13/16	TMC NO. A-3711
CP-113-3	200P1915TP-1	20	±10	370	3 2/32	1 31/32	4 1/2	13/16	TMC NO. CUI35-2

## SPECIFICATIONS

- NO. OF CAP. SECTIONS: 1 (ONE)
- WORKING VOLTAGE: A. DC, NOT RATED  
B. AC, SEE CHART
- CAPACITANCE: SEE CHART
- CAPACITANCE TOLERANCE: SEE CHART
- IMPREGNANT: "CLORINOL" (MFRS. TRADE NAME)
- CASE: A. TYPE: OVAL  
B. MATERIAL: DRAWN STEEL (SEAMLESS)  
C. HERMETICALLY SEALED  
D. FINISH: PROTECTIVE FINISH, UNPAINTED.
- TERMINALS: A. TYPE: STANDARD UNIVERSAL  
DOUBLE BLADE CUP TERMINAL  
B. QUANTITY: 2 (TWO)  
C. SHAPE: "U"  
D. CONSTRUCTION: WELDED TERMINAL ASSEMBLY, WITH SILICONE GASKET AND MOLDED PHENOLIC INSULATING CUP.  
E. FEATURES: LEAKPROOF
- SCHEMATIC: 
- RETAINING BRACKET NOT INCLUDED. SEE CHART FOR REFERENCE.
- TEMPERATURE RANGE: -30°C. TO +55°C.



SYM	DESCRIPTION	DATE	CH. NO.	DRAFTS	CHECKER	ENG. APP.
D	CP113-3 ADDED	1-26-66	15604	SRG	QCB	QC
C	ON-1 MFG NO WAS 200P1416 'C' 2 VA ON-2 MFG NO WAS 200P1417. SPEC. # 6 REV.	11-9-65	15089	SRG	QCB	QC
B	CP 113-2 ADDED TO CHART	9-2-64	12221	WTS	QCB	QC
A	C DIM. WAS 2-7/8, CASE FINISH WAS BLK ENAM. *11 DELETED, MFG NO. WAS 200P1236B2 TOL. ON 'D' WAS +1/16 - 3/16, *10 WAS +40°C	7-30-64	11435	SRG	QCB	QC
UNLESS OTHERWISE SPECIFIED:		CODE	S401-43			
DIMENSIONS ARE IN INCHES		MAXIMUM ALLOWABLE TOLERANCES HAVE BEEN DETERMINED AND ANY DEVIATIONS WILL BE CAUSE FOR REJECTION.				
TOLERANCES ON FRACTIONS ± 1/64 DECIMALS ± .005 ANGLES ± 1/2°		REMOVE ALL BURRS AND SHARP EDGES				

REQ. PER UNIT	MODEL	SECTION	ASS'Y. NO.	DATE
2	RAK-22		AX-390	12-12-62
1	RAK-21		AX-390	12-12-62
USED ON				

REQ. ITEM	PART NO.	DESCRIPTION	SYMBOL
		THE TECHNICAL MATERIEL CORP. MAMARONECK, NEW YORK	
		CAPACITOR, FIXED PAPER, DIELECTRIC	
		CRUY	
		TYPE & TEMPER	
		HEAT TREAT. SPEC.	
		DRAWN	
		CHECKED	
		FINAL APPROVAL	
		FINISH & SPEC. NO.	
		ELEC. DES. APP. MECH. DES. APP.	
		CP-113	D

# STANDARD DRAWING

TMC NO.	MFG # NO.	AT 60 CPS, 25°C ± 5°C		AC W.V 60 CPS	A	B	C	D	E	CASE FINISH	RETAINING BRACKET REF.	REVISIONS																															
		CAP. UF	CAP. TOL%									SYM	DESCRIPTION	DATE	E.M.N. NO.	DRAFT	CHKD	APPD																									
CP-114-1	7522-8	8	±10	220	2-1/2	1-3/16	3-7/8	1-1/8	3/4	GREY ENAMEL	TMC NO. CP-07-	O	ORIGINAL RELEASE FOR PRODUCTION	5/28/64	O	A.M.																											
<p><b>SPECIFICATIONS</b></p> <ol style="list-style-type: none"> <li>1. NO. OF CAP. SECTIONS: ONE (1)</li> <li>2. WORKING VOLTAGE: A) DC, NOT RATED B) AC, SEE CHART</li> <li>3. CAPACITANCE: SEE CHART</li> <li>4. CAPACITANCE TOLERANCE: SEE CHART</li> <li>5. IMPREGNANT: "DIACLOR" (MFRS. TRADE NAME)</li> <li>6. CASE: A) TYPE: RECTANGULAR B) MATERIAL: STEEL C) HERMETICALLY SEALED D) FINISH: SEE CHART</li> <li>7. TERMINALS: A) TYPE: SOLDER LUGS B) QUANTITY: TWO (2) C) SHAPE: "U" D) CONSTRUCTION: RIVETED SILICONE RUBBER BUSHING TERMINALS E) FEATURES: LEAKPROOF</li> <li>8. SCHEMATIC:</li> <li>9. RETAINING BRACKET NOT INCLUDED. SEE CHART FOR REFERENCE.</li> <li>10. TEMPERATURE RANGE: -30°C. TO +70°C.</li> </ol>																																											
<p>The drawing shows a rectangular capacitor. The top view is a rectangle with width <math>A \pm \frac{1}{16}</math> and height <math>B \pm \frac{1}{16}</math>. Two circular terminals are shown on the top surface. The side view shows a rectangular block with height <math>C \pm \frac{1}{16}</math> and a terminal height of <math>E</math> (MAX). The terminal width is <math>D</math> with a tolerance of <math>+\frac{1}{16}</math> to <math>-\frac{3}{16}</math>. A distance of <math>\frac{1}{4}</math> (MAX) is shown between the terminals.</p>																																											
<p><b>LIST OF MATERIAL</b></p> <table border="1" style="width: 100%; border-collapse: collapse;"> <tr> <td style="width: 20%;">MATERIAL</td> <td colspan="3">THE TECHNICAL MATERIEL CORP.</td> </tr> <tr> <td></td> <td colspan="3">MAMARONECK, NEW YORK</td> </tr> <tr> <td>FINISH</td> <td>SEE CHART</td> <td>TITLE</td> <td>CAPACITOR, FIXED PAPER, DIELECTRIC</td> </tr> <tr> <td>UNLESS OTHERWISE SPECIFIED DIMENSIONS ARE IN INCHES AND INCLUDE CHEMICALLY APPLIED OR PLATED FINISHES</td> <td>DRAWN SRG</td> <td>DATE 4-23-63</td> <td>FINAL APPROVAL [Signature]</td> </tr> <tr> <td></td> <td>CHECKED [Signature]</td> <td>DATE</td> <td></td> </tr> <tr> <td>DECIMALS .X ± .05 .XX ± .01 .XXX ± .005</td> <td>FRACTIONS ± 1/64 ANGLES ± 0° 30'</td> <td>ELECT. DES. [Signature]</td> <td>DATE</td> </tr> <tr> <td>TOLERANCES</td> <td></td> <td>MECH. DES.</td> <td>DATE</td> </tr> <tr> <td></td> <td></td> <td></td> <td>DATE</td> </tr> </table>												MATERIAL	THE TECHNICAL MATERIEL CORP.				MAMARONECK, NEW YORK			FINISH	SEE CHART	TITLE	CAPACITOR, FIXED PAPER, DIELECTRIC	UNLESS OTHERWISE SPECIFIED DIMENSIONS ARE IN INCHES AND INCLUDE CHEMICALLY APPLIED OR PLATED FINISHES	DRAWN SRG	DATE 4-23-63	FINAL APPROVAL [Signature]		CHECKED [Signature]	DATE		DECIMALS .X ± .05 .XX ± .01 .XXX ± .005	FRACTIONS ± 1/64 ANGLES ± 0° 30'	ELECT. DES. [Signature]	DATE	TOLERANCES		MECH. DES.	DATE				DATE
MATERIAL	THE TECHNICAL MATERIEL CORP.																																										
	MAMARONECK, NEW YORK																																										
FINISH	SEE CHART	TITLE	CAPACITOR, FIXED PAPER, DIELECTRIC																																								
UNLESS OTHERWISE SPECIFIED DIMENSIONS ARE IN INCHES AND INCLUDE CHEMICALLY APPLIED OR PLATED FINISHES	DRAWN SRG	DATE 4-23-63	FINAL APPROVAL [Signature]																																								
	CHECKED [Signature]	DATE																																									
DECIMALS .X ± .05 .XX ± .01 .XXX ± .005	FRACTIONS ± 1/64 ANGLES ± 0° 30'	ELECT. DES. [Signature]	DATE																																								
TOLERANCES		MECH. DES.	DATE																																								
			DATE																																								
<table border="1" style="width: 100%; border-collapse: collapse;"> <tr> <th>REQ'D.</th> <th>ITEM</th> <th>PART NUMBER</th> <th>DESCRIPTION</th> <th>SYMBOL</th> </tr> <tr> <td></td> <td></td> <td></td> <td></td> <td></td> </tr> </table>												REQ'D.	ITEM	PART NUMBER	DESCRIPTION	SYMBOL																											
REQ'D.	ITEM	PART NUMBER	DESCRIPTION	SYMBOL																																							
<table border="1" style="width: 100%; border-collapse: collapse;"> <tr> <th>T.Y./UNIT</th> <th>MODEL USED ON</th> <th>ASS'Y. NO.</th> </tr> <tr> <td>SCALE #</td> <td>CODE A</td> <td>S401-34</td> </tr> </table>												T.Y./UNIT	MODEL USED ON	ASS'Y. NO.	SCALE #	CODE A	S401-34																										
T.Y./UNIT	MODEL USED ON	ASS'Y. NO.																																									
SCALE #	CODE A	S401-34																																									
<p>THE CONTENTS OF THIS DRAWING ARE THE EXCLUSIVE PROPERTY OF THE TECHNICAL MATERIEL CORP. ITS UNAUTHORIZED USE OR REPRODUCTION IN WHOLE OR IN PART IS STRICTLY FORBIDDEN.</p>																																											
<p><b>NOTES</b></p>																																											

THE CONTENTS OF THIS DRAWING ARE THE EXCLUSIVE PROPERTY OF THE TECHNICAL MATERIEL CORP. ITS UNAUTHORIZED USE OR REPRODUCTION IN WHOLE OR IN PART IS STRICTLY FORBIDDEN.

ELECTRICAL CHART

CP-115

TMC PART NO.	MFRS. REF.	MFRS. PART NO.	TERM. STYLE (SEE) (PICT.)	CIRCUIT TYPE	MIL-C-25C CHAR. LETTER	DC VOLT RATING at 40°C	CAP. MFD.	CAP. TOL. %	MIL-C-25C VIBRATION GRADE	MIL-C-25C CASE SIZE (SEE) (DIM. CHART)
CP-115-1	A	9654	1B		F	1000	10.0	±10	1	SIZE D4 EXCEPT DIM. "C" TOL.
	B	SE400-235								
	C	TREXP 6421								

DIMENSION CHART

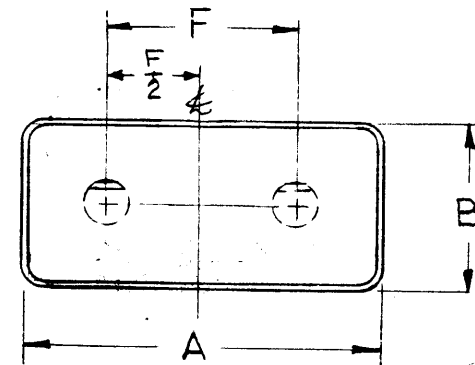
TMC PART NO.	A±1/16 WIDTH	B±1/16 DEPTH	C HEIGHT	F±.005 -1/167 TERM C TO C	K +1/32 LIP RETURN	W MAX TERM HEIGHT	X THD. LENGTH	Y TERM. THDS.	Z MAX TERM. DIA.	APPROPRIATE MIL-C-25C MTG. BRACKET IF REQUIRED (NOT SUPPLIED)
CP-115-1	3-3/4	1-3/4	4 1/4 <sup>+0</sup> <sub>-1/16</sub>	2.000	9/64	3/4	NONE	NONE	13/16	CP07SD4

SPECIFICATIONS:

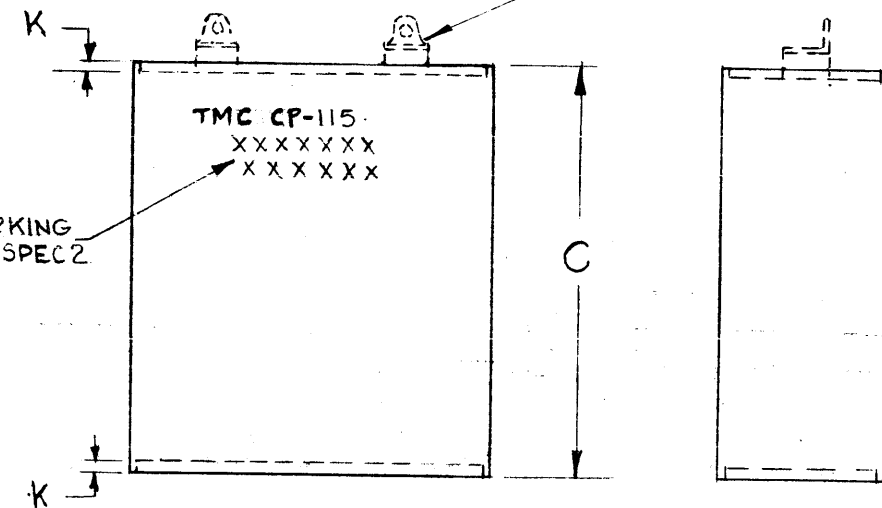
- CASE FINISH: TMC SMOOTH GRAY ENAMEL, S-115
- MARKING: CAPACITOR CASE SHALL BE MARKED IN BLACK WITH TMC PART NO., CAPACITANCE, VOLTAGE MFRS. NAME, MFRS. NO. OR TYPE.

NOTES:

- WITH THE EXCEPTIONS OF ANY DEVIATIONS SHOWN ON THIS DWG., ALL OTHER SPECIFICATIONS & REQUIREMENTS SHALL BE IN ACCORDANCE WITH MIL-C-25C, MIL-C-25/7D & AMENDMENTS.

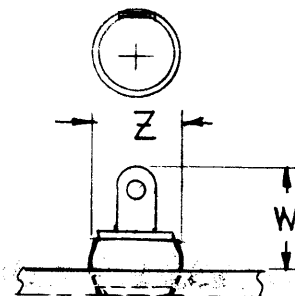


TERMINAL STYLE PER CHART



MARKING SEE SPEC 2

TERMINAL STYLES



STYLE 1B (PER MIL-C-25C)

CODE A-S401-112 B-S401-34 C-S401-146

SYM	DESCRIPTION	DATE	CH. NO.	DRAFTS	CHECKER	ENG. APP.

UNLESS OTHERWISE SPECIFIED:  
 DIMENSIONS ARE IN INCHES  
 TOLERANCES ON FRACTIONS ± 1/64 DECIMALS ± .005 ANGLES ± 1/2°  
 SCALE: NOT TO SCALE  
 MAXIMUM ALLOWABLE TOLERANCES HAVE BEEN DETERMINED AND ANY DEVIATIONS WILL BE CAUSE FOR REJECTION.  
 REMOVE ALL BURRS AND SHARP EDGES

REQ. PER UNIT	MODEL	SECTION	ASS'Y. NO.	DATE
1	TFR-10	AX-412		7-10-63

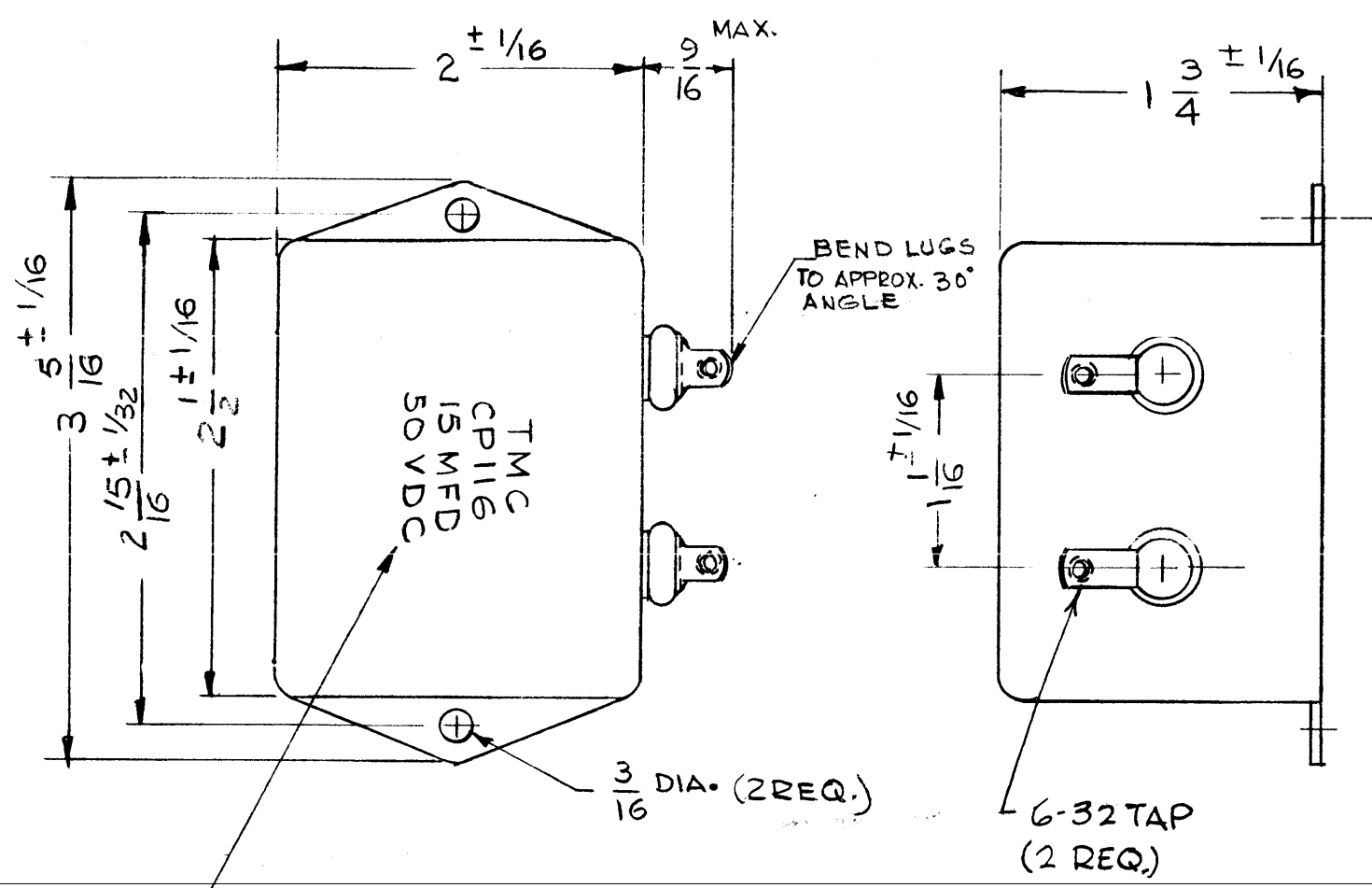
REQ. ITEM	PART NO.	DESCRIPTION	SYMBOL
THE TECHNICAL MATERIEL CORP. MAMARONECK, NEW YORK			
CAPACITOR, FIXED, PAPER DIELECTRIC			
MATERIAL		G.D.L. <i>RP</i> 7-16-63	
TYPE & TEMPER	HEAT TREAT. SPEC.	DRAWN	CHECKED
FINISH & SPEC. NO.		RON KOHN 7-18-63	<i>1.806/1/5</i>
ELEC. DES. APP.		MECH. DES. APP.	
		CP-115	



# STANDARD DRAWING

CP116

REVISIONS						
SYM	DESCRIPTION	DATE	E.M.N. NO.	DRAFT	CHKD	APPD
Ø	ORIGINAL RELEASE FOR PRODUCTION	3-18-66	Ø	WFW		



— SPECIFICATIONS —

- 1- CAPACITY : 15 MF  $\pm$  10%
- 2- WORKING VOLTAGE : 50 VDC
- 3- OPERATING TEMP : -55°C TO +85°C
- 4- FLASH TEST : 100 VDC TERM. TO TERM. AND TERM. TO CASE
- 5- DIELECTRIC : MYLAR
- 6- D.F. : .6% AT 60 CPS AT 25°C
- 7- I.R. : 2000 MEGOHMS MIN. AT 25°C
- 8- METAL CASED, HERMETICALLY SEALED

STAMP 1/8 HIGH BLACK GOTHIC

REQ'D.	ITEM	PART NUMBER	DESCRIPTION	SYMBOL
<b>BUDETTI LIST OF MATERIAL</b>				
MATERIAL		<b>THE TECHNICAL MATERIEL CORP. MAMARONECK, NEW YORK</b>		
FINISH		TITLE <b>CAPACITOR, FIXED, PAPER</b>		
UNLESS OTHERWISE SPECIFIED DIMENSIONS ARE IN INCHES AND INCLUDE CHEMICALLY APPLIED OR PLATED FINISHES		DRAWN G.D.L.	DATE 1-31-66	FINAL APPROVAL <i>[Signature]</i>
		CHECKED <i>[Signature]</i>	DATE 3-16-66	DATE 3-17-66
DECIMALS .X $\pm$ .05 .XX $\pm$ .01 .XXX $\pm$ .005		FRACTIONS $\pm 1/64$ ANGLES $\pm 0^\circ 30'$		DATE 3-17-66
TOLERANCES		ELECT. DES. <i>[Signature]</i>		DATE 3-17-66
		MECH. DES. <i>[Signature]</i>		DATE 3-17-66
		SHEET		RE

4	GPT-10KLF	Ax
Q'TY./UNIT	MODEL USED ON	ASS'Y. NO.
SCALE DO NOT SCALE	CODE	S401-112 - 17863
THE CONTENTS OF THIS DRAWING ARE THE EXCLUSIVE PROPERTY OF THE TECHNICAL MATERIEL CORP. ITS UNAUTHORIZED USE OR REPRODUCTION IN WHOLE OR IN PART IS STRICTLY FORBIDDEN.		

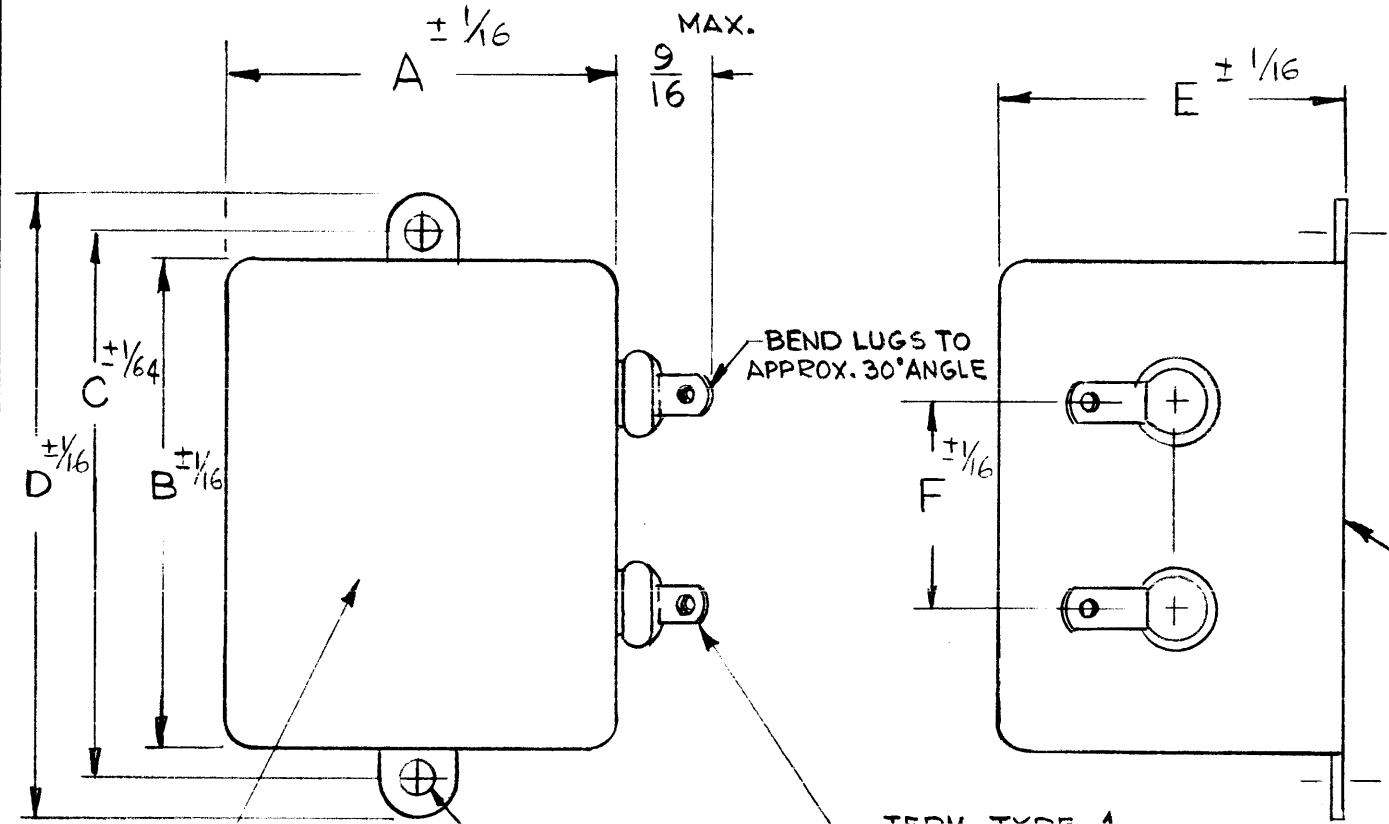
NOTES

# STANDARD DRAWING

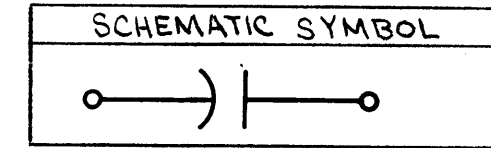
CP117-B

## REVISIONS

SYM	DESCRIPTION	DATE	E.M.N. NO.	DRAFT	CHKD	APPD
Ø	ORIGINAL RELEASE FOR PRODUCTION	3-18-66	Ø	WAW		
A	ADDED 6-32 TAP ON TYPE 1 TERMINAL HOLES.	7-21-66	16605	RME	JCB	MM
B	ADDED WORDS BOTTOM & PAINTING NOTE. ADDED SCHEMATIC SYMBOL	11-17-66	17271	RME	JCB	X



TMC PART NO.	MFG PART NO	CAPACITY		RATED VOLT. WORKING	I. R @ 25°C MEGOHMS MIN.	TYPE TERM	DIMENSIONS					
		UF	TOL.				A	B	C	D	E	F
CP117-1	95220	1.0	10%	1KVDC	10,000	1	2	2	2 <sup>3</sup> / <sub>8</sub>	2 <sup>3</sup> / <sub>4</sub>	1 <sup>1</sup> / <sub>8</sub>	1 <sup>1</sup> / <sub>16</sub>
CP117-2	96103	0.1	20%	2KVDC	100,000	2	1	1 <sup>3</sup> / <sub>16</sub>	2 <sup>1</sup> / <sub>8</sub>	2 <sup>1</sup> / <sub>2</sub>	1	1



**NOTE:**  
DO NOT PAINT BOTTOM OR MOUNTING TABS.

~ SPECIFICATIONS ~

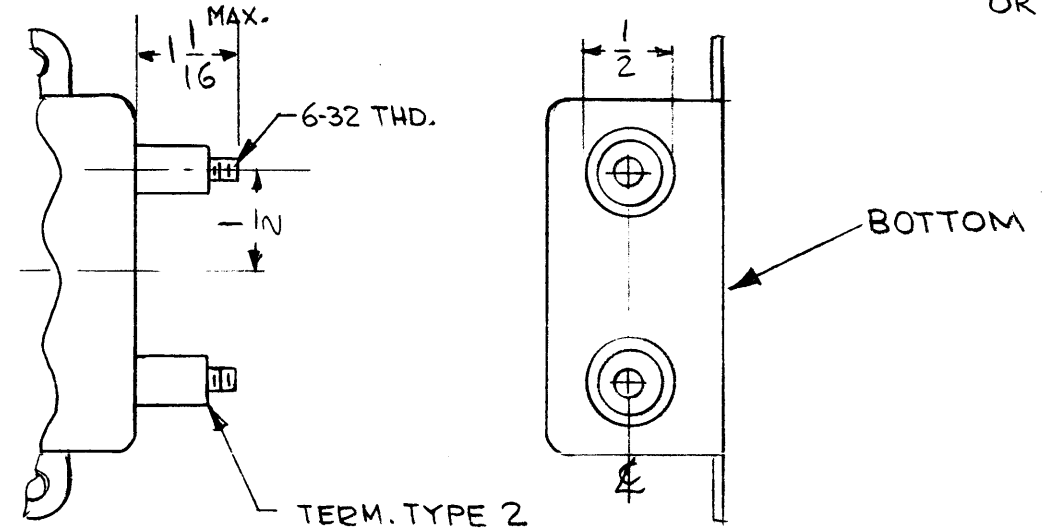
TEST VOLT : 2 X RATED VOLT. TERM. TO TERM., TERM. TO CASE.

D.F 25°C @ 1KC : 1.0%

CONSTRUCTION : EXTENDED FOIL

CASE : METAL, HERMETICALLY SEALED

OPERATING TEMP. RANGE : -55°C TO +85°C.



STAMP TMC P/N, CAP., AND VOLTAGE 1/8 HIGH BLACK GOTHIC.

REQ'D.	ITEM	PART NUMBER	DESCRIPTION	SYMBOL
<b>BUDETTI LIST OF MATERIAL</b>				
MATERIAL			<b>THE TECHNICAL MATERIEL CORP. MAMARONECK, NEW YORK</b>	
FINISH S115-TMC GREY			TITLE CAPACITOR, FIXED FILM DIELECTRIC	
UNLESS OTHERWISE SPECIFIED DIMENSIONS ARE IN INCHES AND INCLUDE CHEMICALLY APPLIED OR PLATED FINISHES		DRAWN G.D.L.	DATE 1-31-66	FINAL APPROVAL <i>[Signature]</i>
		CHECKED <i>[Signature]</i>	DATE 3-16-66	DATE 3/17/66
		ELECT. DES. JCB	DATE 3-17-66	DATE
		MECH. DES.	DATE	DATE
			CP117-B	
			SHEET	
			REV. LTR.	

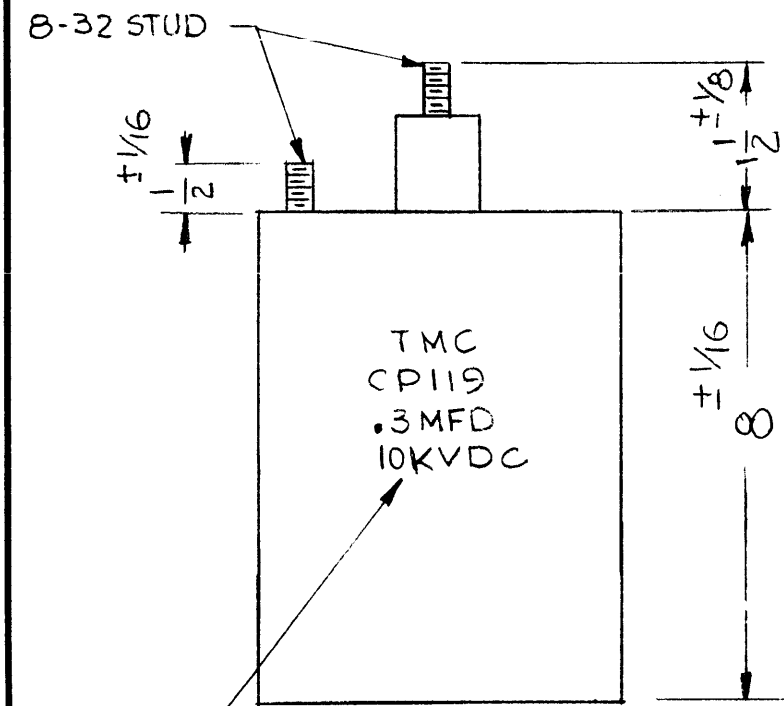
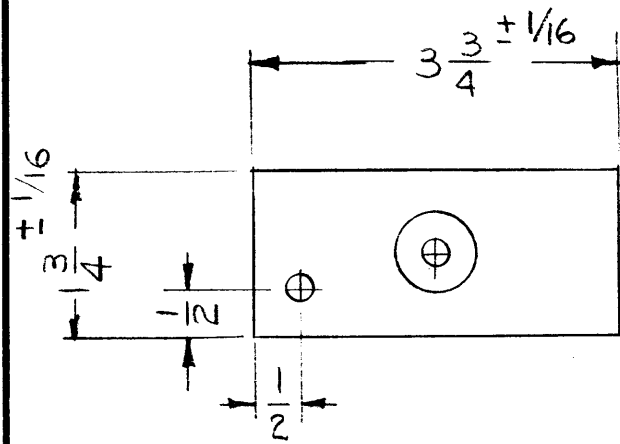
GPT-10KLF		ASS'Y. NO.
Q'TY./UNIT	MODEL USED ON	
SCALE DO NOT SCALE	CODE C	3401-112

## NOTES

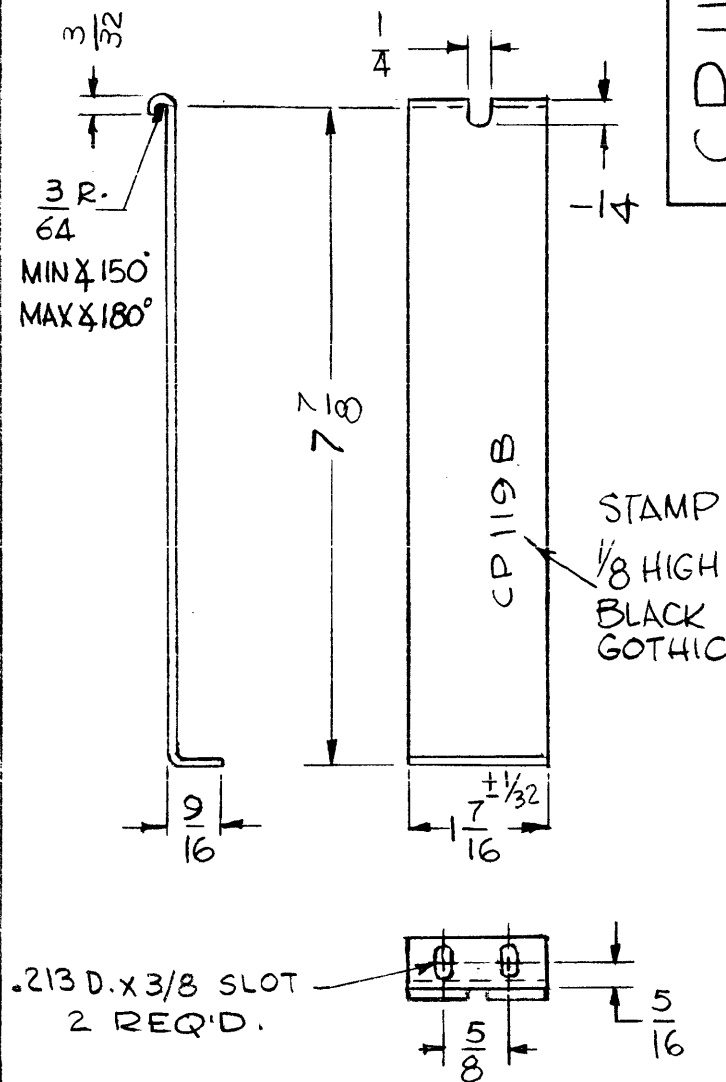
THE CONTENTS OF THIS DRAWING ARE THE EXCLUSIVE PROPERTY OF THE TECHNICAL MATERIEL CORP. ITS UNAUTHORIZED USE OR REPRODUCTION IN WHOLE OR IN PART IS STRICTLY FORBIDDEN.

DECIMALS .X ± .05 .XX ± .01 .XXX ± .005	TOLERANCES	FRACTIONS ± 1/64 ANGLES ± 0° 30'
--	------------	---

W/L G.K.L. 3/18/66



STAMP 3/16 HIGH BLACK GOTHIC



STAMP 1/8 HIGH BLACK GOTHIC

BRACKET MOUNTING  
(TO BE SUPPLIED BY MFG #1141-91)

STAMP TMC PART NO. CP119 B  
1/8 HIGH GOTHIC.

CP119

REVISIONS

SYM	DESCRIPTION	DATE	E.M.N. NO.	DRAFT	CHKD	APPD
X1	MANUFACTURE,	11/17/65				
Ø	ORIGINAL RELEASE FOR PRODUCTION	3/18/66	Ø	MW		

- SPECIFICATIONS -

- 1-CAPACITY : .3MF ± 10%
- 2-WORKING VOLTAGE : 10,000VDC
- 3-DIELECTRIC STRENGTH TEST : 15,000 VDC TERM. TO TERM.
- 4-DISSIPATION FACTOR : 1% MAX. AT 25°C
- 5-INSULATION RESISTANCE AT 25°C. 6600 MEGOHMS MIN.
- 6-OPERATING TEMP. RANGE : -55°C TO +85°C
- 7-CONSTRUCTION : METAL CASED, HERMETICALLY SEALED

REQ'D.	ITEM	PART NUMBER	DESCRIPTION	SYMBOL
--------	------	-------------	-------------	--------

BUDETTI

LIST OF MATERIAL

MATERIAL	THE TECHNICAL MATERIEL CORP. MAMARONECK, NEW YORK
----------	--

FINISH	S115-TMC GREY	TITLE	CAPACITOR, FIXED
--------	---------------	-------	------------------

UNLESS OTHERWISE SPECIFIED DIMENSIONS ARE IN INCHES AND INCLUDE CHEMICALLY APPLIED OR PLATED FINISHES	DRAWN	G.D.L.	DATE	3-7-66	FINAL APPROVAL <i>A.M. Hay</i> CP119	DATE	3/17/66
	CHECKED	<i>JB</i>	DATE	3-16-66		REV. LTR.	Ø
	ELECT. DES.	<i>aa</i>	DATE	3-17-66			
MECH. DES.		DATE					

DECIMALS	FRACTIONS
.X ± .05	± 1/64
.XX ± .01	ANGLES
.XXX ± .005	± 0° 30'

Q'TY./UNIT	MODEL USED ON	ASS'Y. NO.
3	GPT-10KLF	
SCALE	CODE	
DO NOT SCALE	C	3401-112-98102

THE CONTENTS OF THIS DRAWING ARE THE EXCLUSIVE PROPERTY OF THE TECHNICAL MATERIEL CORP. ITS UNAUTHORIZED USE OR REPRODUCTION IN WHOLE OR IN PART IS STRICTLY FORBIDDEN.

NOTES

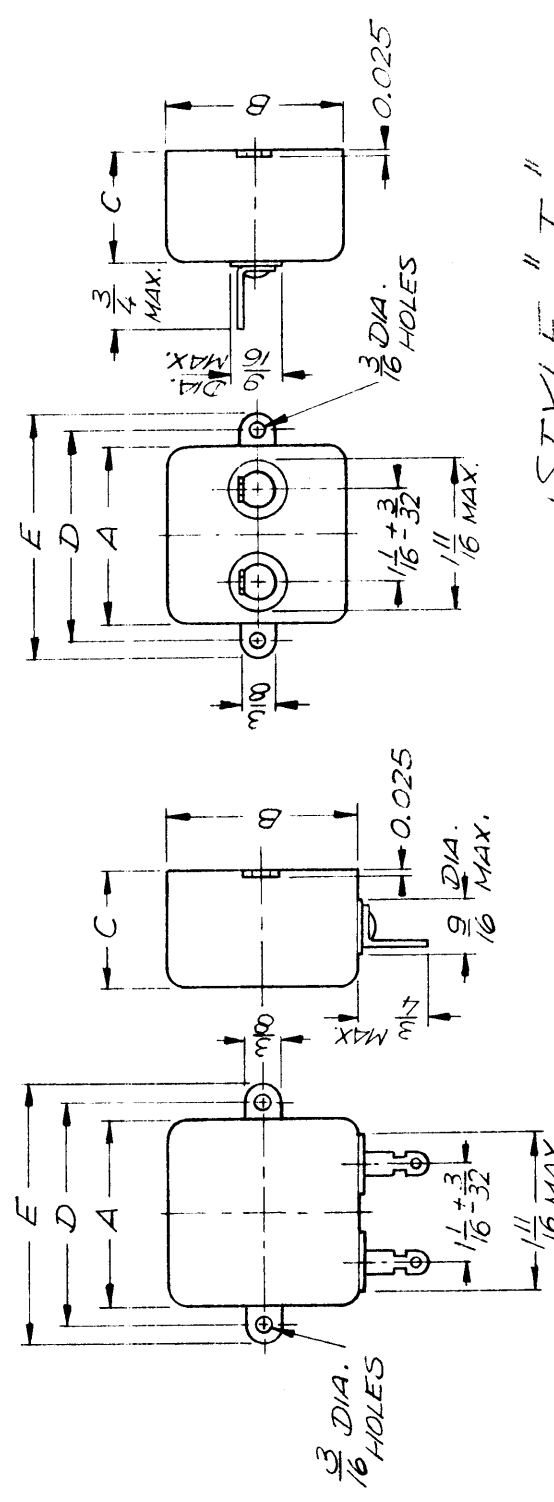
M/L AKLEIN 3/18/66



DC VOLTAGE RATING	CAPACITANCE $\mu$ F	MFG CAT. NO. (STYLE "S")	MFG CAT. NO. (STYLE "T")	A $\pm 1/16$	B $\pm 1/16$	C $-1/8, +1/16$	D $\pm 1/32$	E $\pm 1/16$	REVISIONS							
									ZONE	LTR	DESCRIPTION	DATE	E.M.N. NO	DRAFT	CHKD	APPD
150	20	143P1M	143P101M	2	2	1	23/8	23/4	X	EXP. RELEASE	10/2/69					
	25	143P2M	143P102M	2	2	1 1/8			0	ORIG RELEASE FOR PROD	11/1/69					
	30	143P3M	143P103M	2	2	1 1/4										
	35	143P4M	143P104M	2	2	1 1/2										
	40	143P5M	143P105M	2	2	1										
200	20	143P6M	143P106M	2	2	1 1/8										
	25	143P7M	143P107M	2	2	1 1/4										
	4	143P8M	143P108M	2	2	1										
	5	143P9M	143P109M	2	2	1										
	6	143P10M	143P110M	2	2	1 1/8										
400	7	143P11M	143P111M	2	2	1 1/4										
	8	143P12M	143P112M	2	2	1 1/2										
	3	143P13M	143P113M	2	2	1										
	4	143P14M	143P114M	2	2	1 1/4										
	5	143P15M	143P115M	2	2	1 1/2										
600							23/8	23/4								

TMC MFG CODE NO.: S401 - 49  
 MFG TYPE NO.: 143P

SPECIFICATIONS:  
 TEMP. RANGE:  $-55^{\circ}$  C TO  $+125^{\circ}$  C  
 CONSTRUCTION: METALIZED PAPER  
 CASE: NON CORROSIIVE METAL CASE  
 HERMETICALLY SEALED  
 TERMINALS: SOLDER TYPE



TMC PART NO. SHALL APPEAR IN THE FOLLOWING FORM:  
 CP121 - 25 M 150 I

TOL. VOLTAGE STYLE  
 K  $\pm 10\%$  DC  
 M  $\pm 20\%$

BASIC CAPACITANCE (SEE CHART)  
 TMC DWG. NO.

STYLE "T"

STYLE "S"

REQ'D ITEM	PART NUMBER	DESCRIPTION	SYM.
LIST OF MATERIAL			
THE TECHNICAL MATERIEL CORP. MAMARONECK, NEW YORK			
CAPACITOR, FIXED METALIZED PAPER			
SIZE	CODE IDENT. NO.	DWG NO.	ISSUE
B	82679	CP 121	$\emptyset$
SCALE	SHEET	OF	

FINAL APPROVAL	DATE	MECH DES	DATE	ELECT DES	DATE	CHECKED	DATE	DRAWN	DATE
[Signature]	10/2/69	[Signature]	12-30-69	[Signature]	12-30-69	[Signature]	10/6/69	[Signature]	10/3/69

UNLESS OTHERWISE SPECIFIED DIMENSIONS ARE IN INCHES AND INCLUDE CHEMICALLY APPLIED OR PLATED FINISHES

DECIMALS: .X  $\pm .05$ , .XX  $\pm .01$ , .XXX  $\pm .005$   
 FRACTIONS: 1/64  
 TOLS. ANGLES: 0°-30'

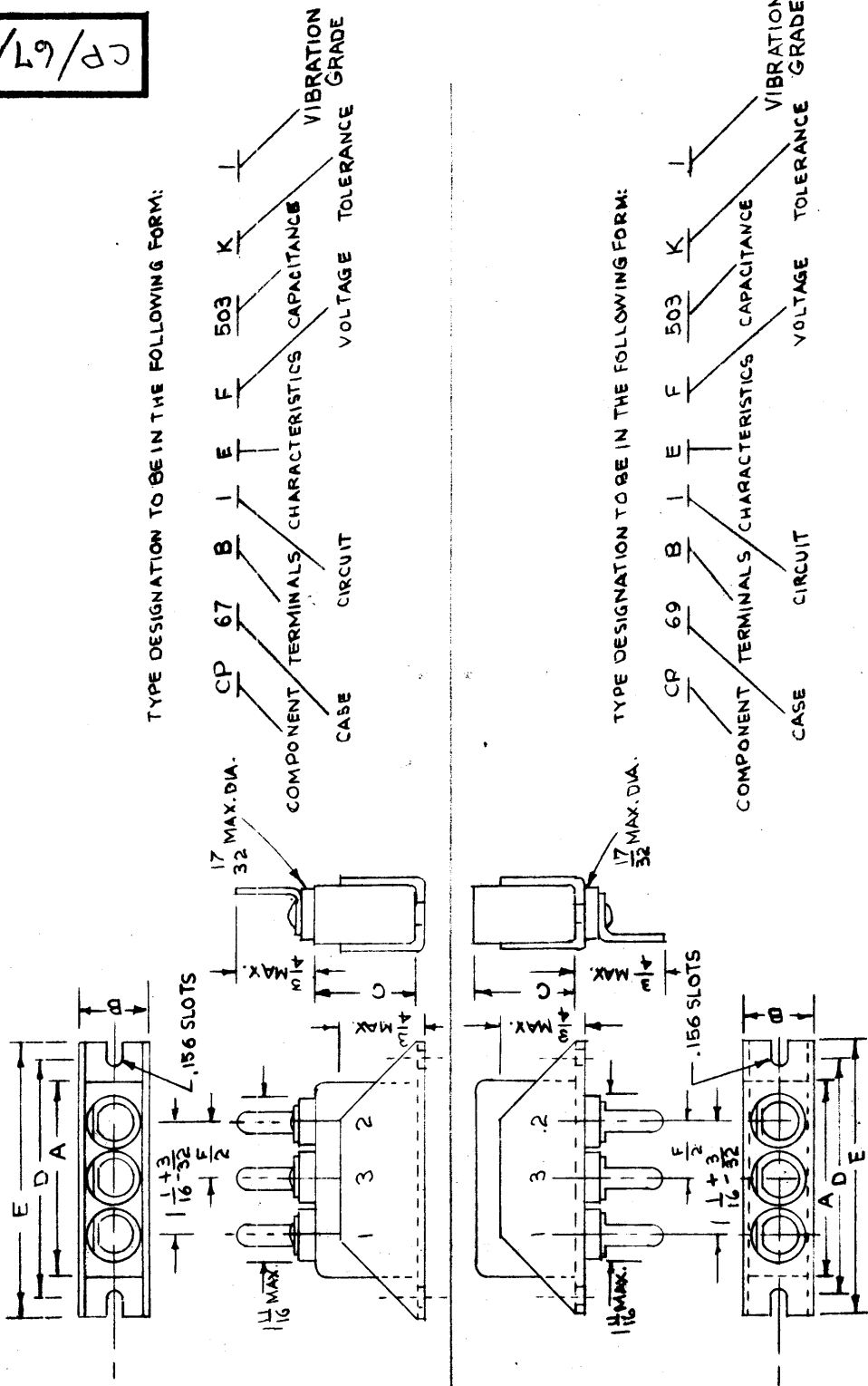
MATERIAL FINISH

QTY / UNIT	MODEL USED ON	ASSY NO.
	PALA - 10K	AX 5084
APPLICATION		
CODE	S401 - 49	

NOTICE TO PERSONS RECEIVING THIS DRAWING  
 THE TECHNICAL MATERIEL CORPORATION claims proprietary right in the material disclosed hereon. This drawing is issued in confidence for engineering information only and may not be reproduced or used to manufacture anything shown hereon without permission from THE TECHNICAL MATERIEL CORPORATION to the user. This drawing is loaned for mutual assistance and is subject to recall at any time.

IF IT IS FOUND DESIRABLE TO CHANGE ANY TOLERANCE OR OTHER DETAIL SPECIFIED ON THIS DRAWING NOTIFY THE PURCHASER PROMPTLY.

MAXIMUM ALLOWABLE TOLERANCE HAVE BEEN DETERMINED AND DEVIATIONS WILL BE CAUSE FOR REJECTION. REMOVE ALL BURRS AND SHARP EDGES



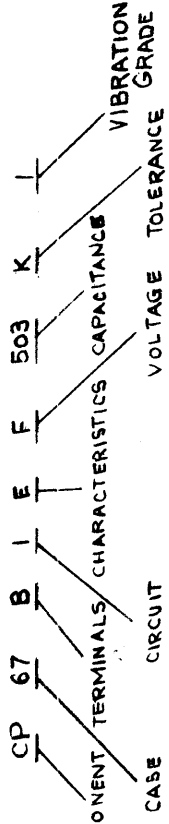
# STANDARD DRAWING

CP/67/69

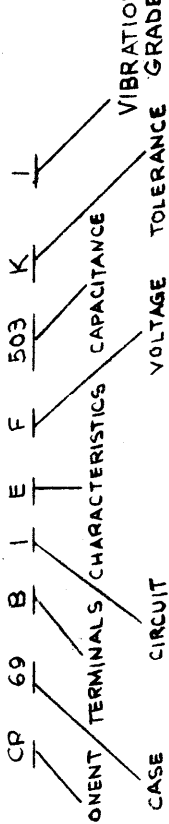
## DIMENSIONS IN INCHES

CASE SIZE	A ± 3/32	B MAX.	C ± 1/16	D ± 1/32	E ± 1/32	F ± 3/32
B1	1 3/4	4 1/64	1 1/16	2 7/8	2 7/16	1 1/16
B2	1 3/4	4 1/64	1 1/2	2 7/8	2 7/16	1 1/16
B3	1 3/4	4 1/64	2	2 7/8	2 7/16	1 1/16
B4	1 3/4	4 1/64	2 1/2	2 7/8	2 7/16	1 1/16
B5	1 3/4	4 1/64	2 3/4	2 7/8	2 7/16	1 1/16

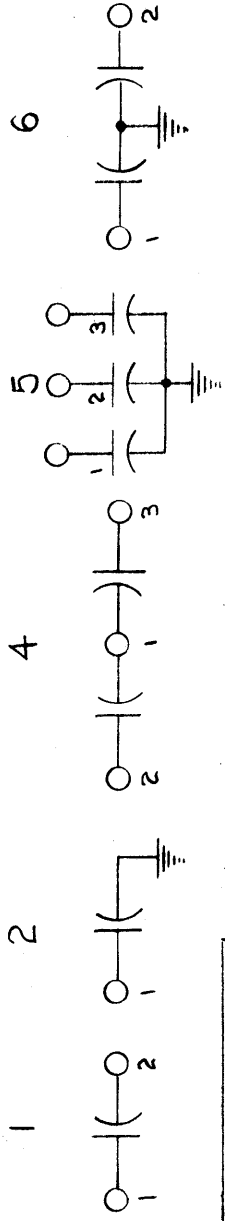
TYPE DESIGNATION TO BE IN THE FOLLOWING FORM:



TYPE DESIGNATION TO BE IN THE FOLLOWING FORM:



### CIRCUITS



### TEMPERATURE CHARACTERISTICS

LETTER	TEMP C	INS. RESISTANCE MEG. OHMS
E	-55° to +85°	6000
F	-55° to +85°	4500

TOLERANCES	
LETTER	PERCENT
K	± 10
V	+ 20 - 10

ISSUE	ITEM	CHANGED FROM	DATE	CN. NO.	DRAFTS	CHECKER	ENG. APP.
B		ADDED VIBRATION GRADE I	7-21-66	16604	RME	[Signature]	[Signature]
A		CHARACTERISTICS & TOLERANCES REVISED	4-9-63	8743	[Signature]	[Signature]	[Signature]

TOLERANCES	
DEC. DIM. ±	FRAC. DIM. ±
	ANGULAR DIM. ±

DRILL PUNCH, COMMERCIAL STOCK SIZES AND MANUFACTURERS TOLERANCES ARE NOT INCLUDED.

PROJECT NO.	DATE
MODEL	ISSUED
XFK	

TYPE DESIGNATION	RATED VOLTAGE (VOLTS)	CAPACITANCE (μf)	CHARAC. AVAILABLE	TOLERANCE AVAILABLE	CASE SIZE FOR CHAR. E	
					CHAR. E	CHAR. F
CP6-B-EF503K1	600	0.05	E	K	B1	B1
CP6-B-EF104K1	600	0.1	E	K	B1	B1
CP6-B-EF254K1	600	0.25	E	K	B2	B2
CP6-B-EF504K1	600	0.5	E	K	B3	B3
CP6-B-F105K1	600	1	E,F	K	B5	B4
CP6-B-EG103K1	1000	0.01	E	K	B1	B1
CP6-B-EG203K1	1000	0.02	E	K	B1	B1
CP6-B-EG503K1	1000	0.05	E	K	B1	B1
CP6-B-EG104K1	1000	0.1	E,F	K	B2	B1
CP6-B-EG254K1	1000	0.25	E	K	B3	B3
CP6-B-G504K1	1000	0.5	E,F	K	B5	B4
CP6-B-EF503V1	600	0.05 - 0.05	E	V	B1	B1
CP6-B-EF104V1	600	0.1 - 0.1	E	V	B2	B2
CP6-B-EF254V1	600	0.25 - 0.25	E	V	B3	B3
CP6-B-F504V1	600	0.5 - 0.5	E,F	V	B5	B4
CP6-B-EG103V1	1000	0.01 - 0.01	E	V	B1	B1
CP6-B-EG203V1	1000	0.02 - 0.02	E	V	B1	B1
CP6-B-G503V1	1000	0.05 - 0.05	E,F	V	B2	B2
CP6-B-G104V1	1000	0.1 - 0.1	E,F	V	B3	B2
CP6-B-G254V1	1000	0.25 - 0.25	E,F	V	B5	B4
CP6-B5-F503V1	600	0.05 - 0.05 - 0.05	E,F	V	B2	B1
CP6-B5EF104V1	600	0.1 - 0.1 - 0.1	E	V	B2	B2
CP6-B5EF254V1	600	0.25 - 0.25 - 0.25	E,F	V	B5	B4
CP6-B5EG103V1	1000	0.01 - 0.01 - 0.01	E	V	B1	B1
CP6-B5EG203V1	1000	0.02 - 0.02 - 0.02	E	V	B1	B1
CP6-B5EG503V1	1000	0.05 - 0.05 - 0.05	E	V	B2	B2
CP6-B5EG104V1	1000	0.1 - 0.1 - 0.1	E	V	B2	B2

CAPACITORS SHALL BE IN ACC. WITH MIL-C-25 AND AMEND.

REQ. ITEM	PART NO.	DESCRIPTION	SYMBOL
		THE TECHNICAL MATERIEL CORP.	
		MAMARONECK, NEW YORK	
		CAPACITOR, FIXED	
		METALLIC CASE	
		C.O.D. 11/15/51	G.T.O.
		DRAWN	ELEC. DES. APP.
		CHECKED	

HEAT TREAT. SPEC.	
DATE	CP/67/69