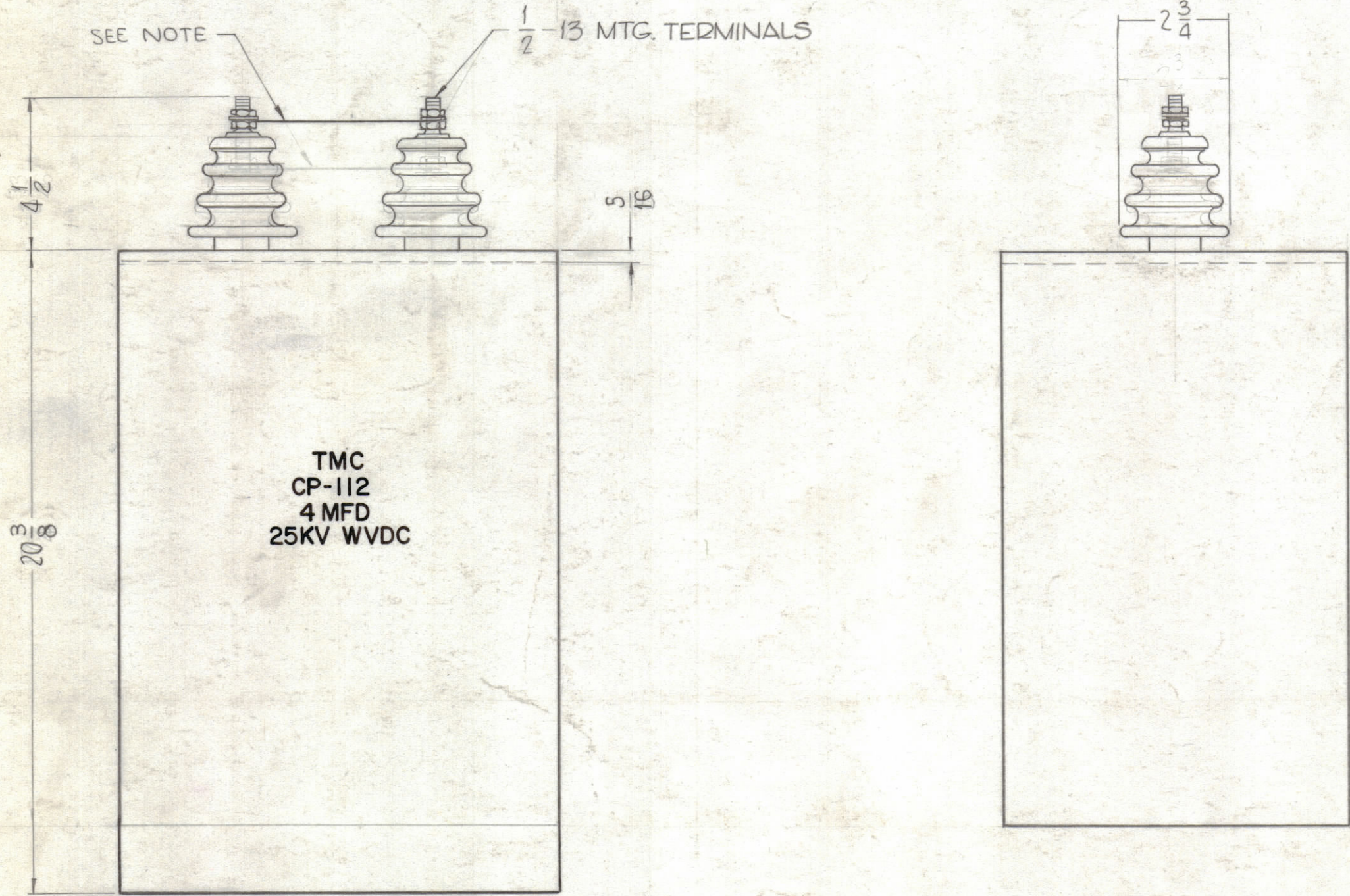
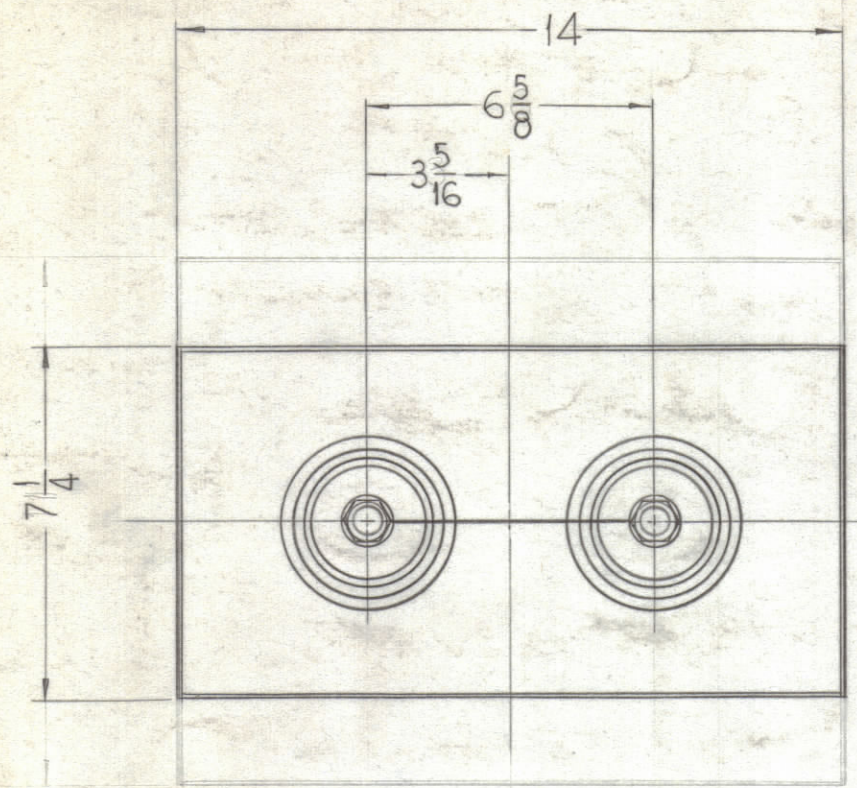


REVISIONS							
ZONE	SYM	DESCRIPTION	DATE	E.M.N. NO.	DRAFT	CHKD	APPD
0		ORIGINAL RELEASE FOR PRODUCTION	5/18/64			JWB	



**SPECIFICATIONS**

**ELECTRICAL SPECIFICATIONS**  
 CAPACITANCE - 4 MICROFARADS ± 10%  
 VOLTAGE - 25KV WVDC

FINISH - S115, TMC SMOOTH GRAY ENAMEL.  
 STAMPING - STAMP AS SHOWN APPROX. 3/4" HIGH BLACK GOTHIC AFTER FINISHING.

CP-112 0

**NOTE:**  
 DO NOT REMOVE WIRE UNTIL CAPACITOR IS READY TO BE PUT INTO A UNIT.

**NOTES**

4	GPT 200K	
QTY/UNIT	MODEL USED ON	ASSY. NO.
SCALE	CODE	3401-146

REQ'D.	ITEM	PART NUMBER	DESCRIPTION	SYMBOL
<b>LIST OF MATERIAL</b>				
MATERIAL			<b>THE TECHNICAL MATERIEL CORP. MAMARONECK, NEW YORK</b>	
FINISH			TITLE <b>CAPACITOR, FIXED PAPER</b>	
UNLESS OTHERWISE SPECIFIED DIMENSIONS ARE IN INCHES AND INCLUDE CHEMICALLY APPLIED OR PLATED FINISHES		DRAWN John C. Biele	DATE 5/16/62	FINAL APPROVAL [Signature]
		CHECKED aa	DATE	DATE
DECIMALS .X ± .05 .XX ± .01 .XXX ± .005		FRACTIONS ± 1/64 ANGLES ± 0° 30'		TOLERANCES
THE CONTENTS OF THIS DRAWING ARE THE EXCLUSIVE PROPERTY OF THE TECHNICAL MATERIEL CORP. ITS UNAUTHORIZED USE OR REPRODUCTION IN WHOLE OR IN PART IS STRICTLY FORBIDDEN.		ELECT. DES. [Signature]	DATE 7/10/64	MECH. DES. [Signature]
SHEET			DATE	REV. LTR.
1			CP-112	0