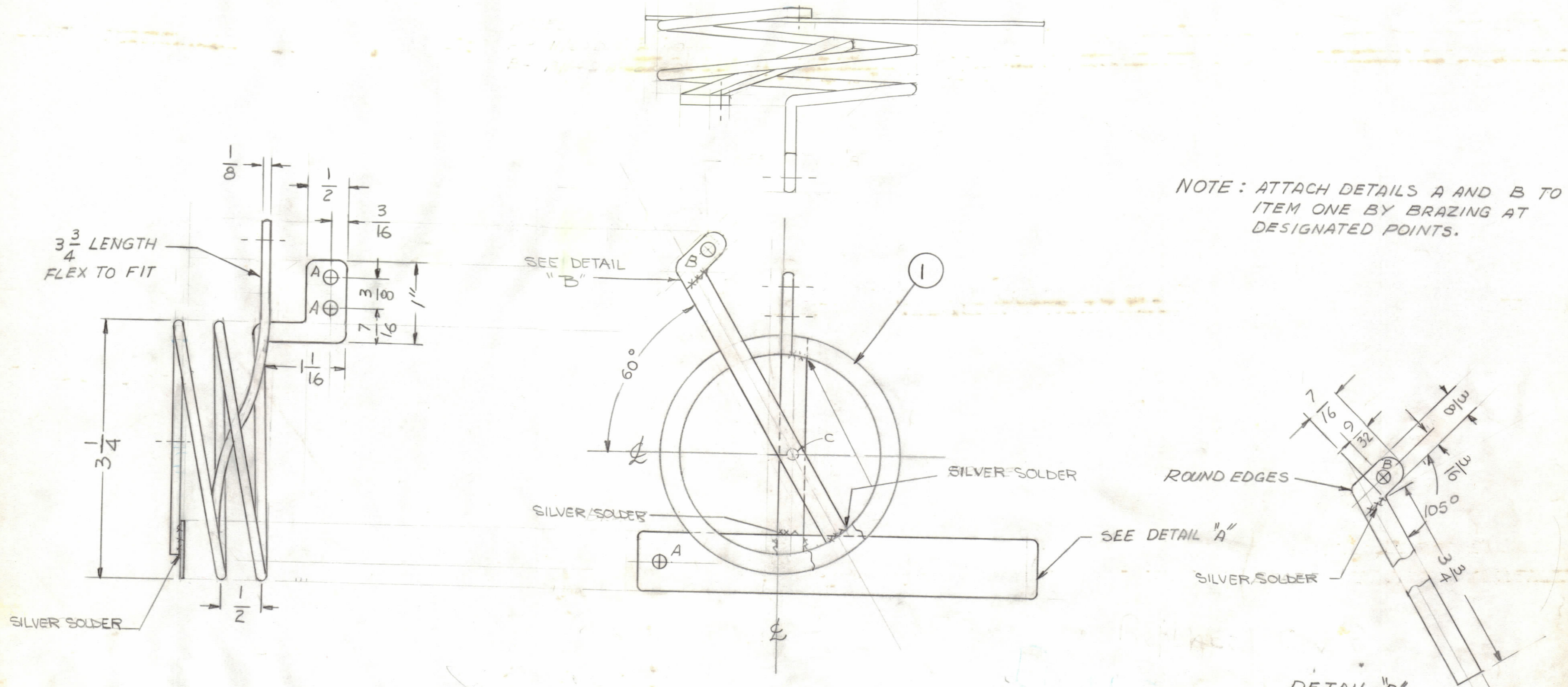
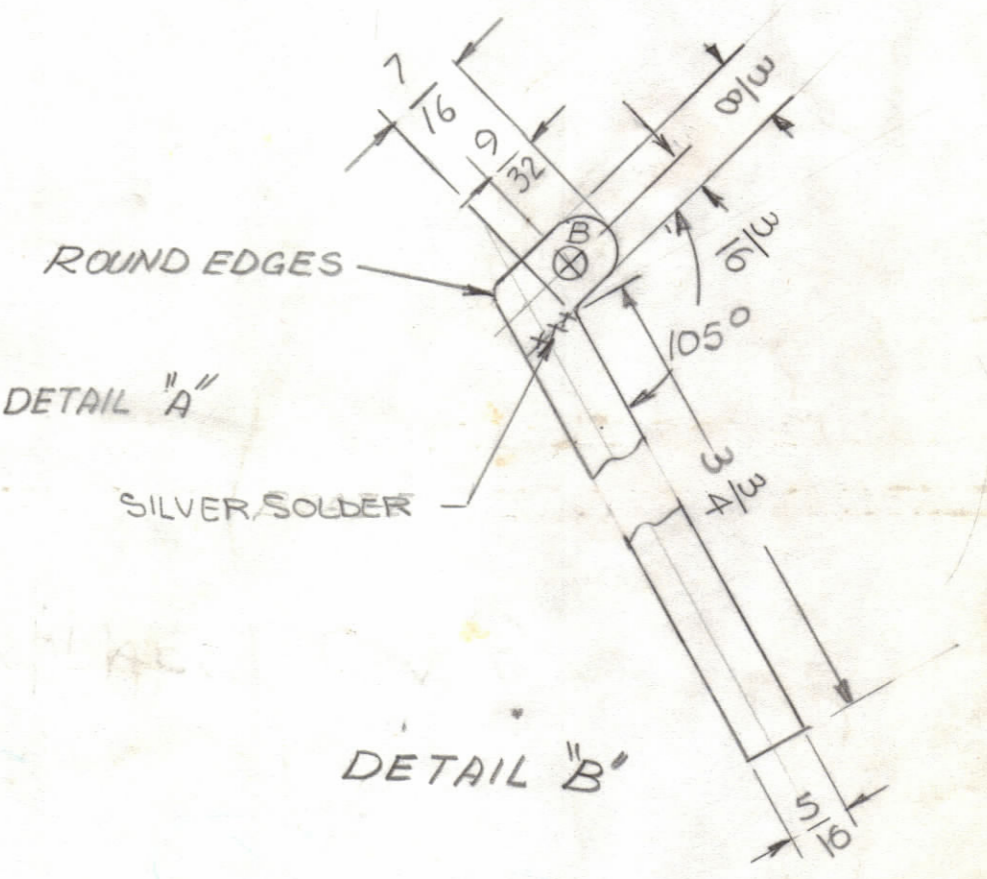
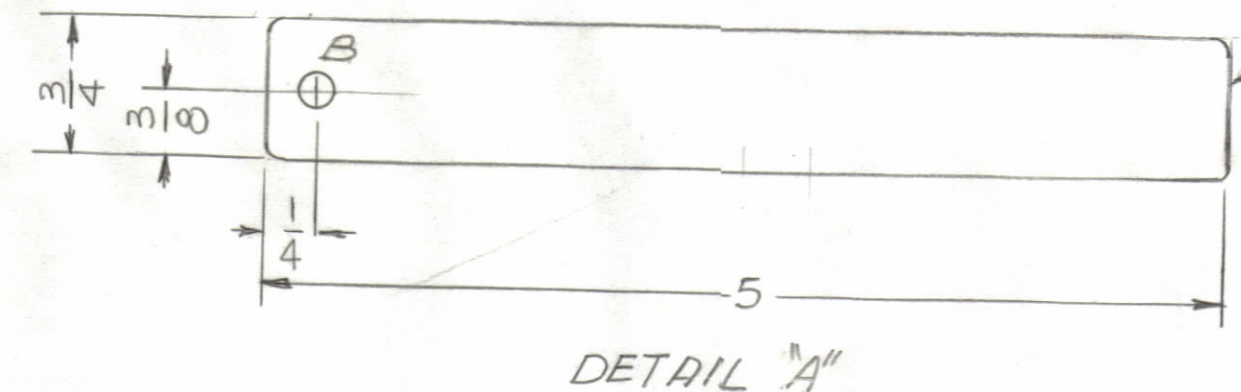


ENGINEERING SKETCH NOT FOR PRODUCTION

REVISIONS						
ZONE	LTR	DESCRIPTION	DATE	E.M.N.NO	DRAFT	CHKD APPD
X		EXPER. RELEASE				
X		ADD "C" HOLE AND TOP VIEW	12-16-77		PH	
0		ORIGINAL RELEASE	10-20-80		du	



- HOLES
- A 11/64 DIA. 2 REQ
 - B 13/64 DIA. 2 REQ
 - C 9/64 DIA. 1 REQ



HFTA-10K ()		
QTY / UNIT	MODEL USED ON	ASS'Y NO.
APPLICATION		
CODE		

NOTICE TO PERSONS RECEIVING THIS DRAWING
 THE TECHNICAL MATERIEL CORPORATION claims proprietary right in the material disclosed hereon. This drawing is issued in confidence for engineering information only and may not be reproduced or used to manufacture anything shown hereon without permission from THE TECHNICAL MATERIEL CORPORATION to the user. This drawing is loaned for mutual assistance and is subject to recall at any time.

UNLESS OTHERWISE SPECIFIED DIMENSIONS ARE IN INCHES AND INCLUDE CHEMICALLY APPLIED OR PLATED FINISHES

TOLERANCES ON

DECIMALS	FRACTIONS
.X ± .05	± 1/64
.XX ± .01	ANGLES
.XXX ± .005	± 0° -30'

MATERIAL AS NOTED

FINISH AS NOTED

1	1	CL133-2-5	COIL RF TWO TURNS CLOCKWISE	
QTY. REQ.	ITEM	PART NO.	DESCRIPTION	SYMBOL
LIST OF MATERIAL				
THE TECHNICAL MATERIEL CORP. MAMARONECK, NEW YORK				
COIL RF HI FREQ				
SIZE	CODE IDENT.NO.	DWG NO.	ISSUE	
C	82679	CL 489	1	
SCALE	1:1		SHEET	OF

CL489