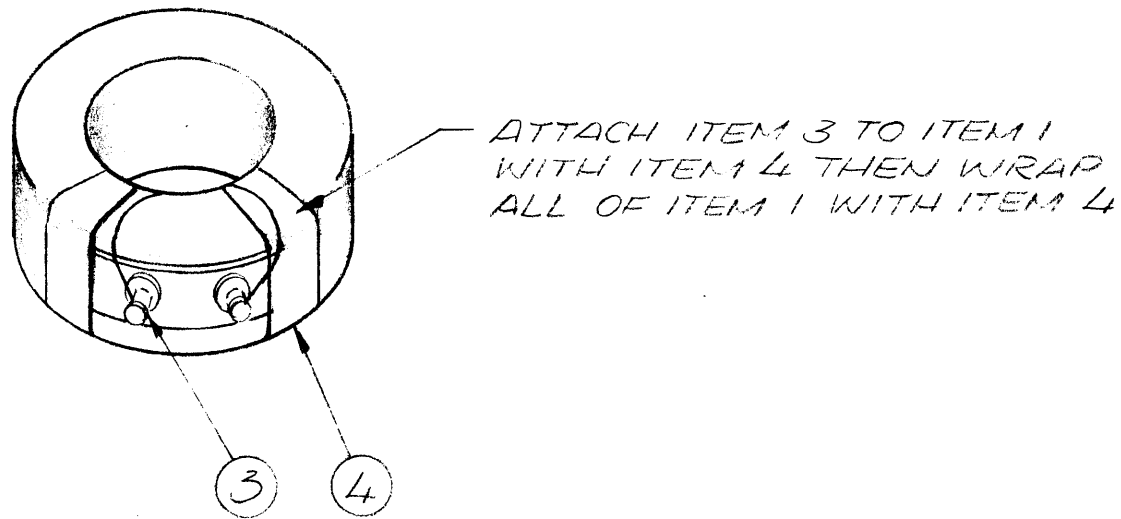
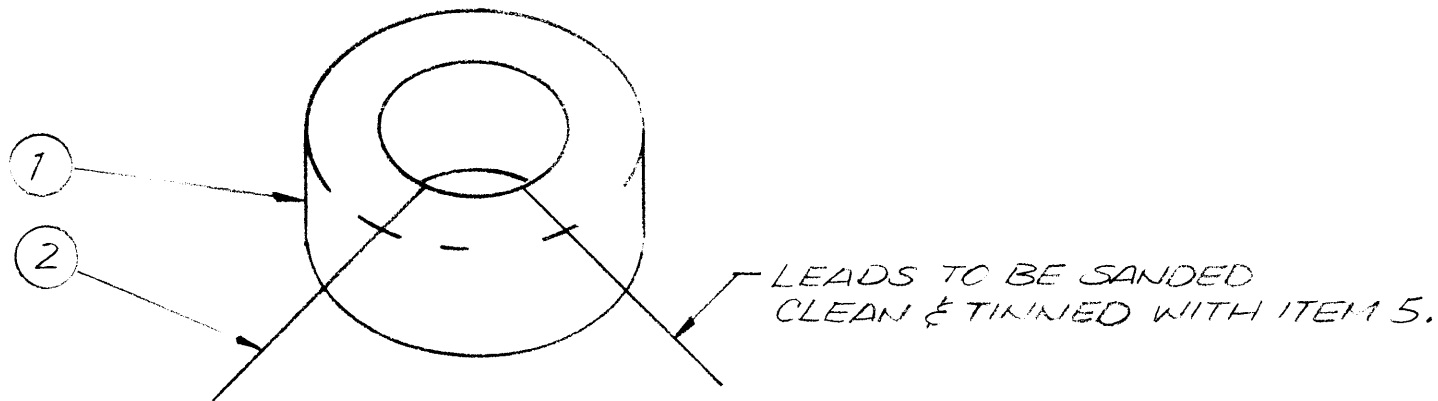


COIL NO	WIRESIZE	TURNS	QMTR. TEST FREQ	Lmhy	REQ
CL-481	WI-141-24-9	400	1KHz	28±10%	3

REVISIONS							
E.M.N. NO.	DRAFT	CHKD	ZONE	LTR	DESCRIPTION	DATE	APPROVED
		CL		Ø	ORIGINAL RELEASE FOR PROD.	1/26/73	



— NOTES —

1. REFER TO TMC SPEC. S-1311.
2. AFTER MATCHING COIL WITH CAPACITOR ASSEMBLE AS SHOWN.
3. STOCK FINISHED INDUCTOR AND CAPACITOR TOGETHER.

REQ'D	ITEM	PART NUMBER	DESCRIPTION	SYM.
	1	7	CN127A-1R0	CAP. POLYCARBONATE
X	6	GL-110	COMPOUND, POTTING	
X	5	BS100	SOLDER TIN ALLOY	
X	4	TA108-2	TAPE THERMOSETTING	
1	3	A-450	TERM. STRIP ASSY.	
X	2	WI-141-24-9	WIRE ELEC.	
1	1	CI103-19	CORE	

POSE		LIST OF MATERIAL			
FINAL APPROVAL	DATE	THE TECHNICAL MATERIEL CORP. MAMARONECK, NEW YORK TOROID ASSY.			
MECH. DES.	DATE				
ELECT. DES.	DATE				
CHECKED	DATE				
DRAWN	DATE	SIZE	CODE IDENT. NO.	DWG NO.	ISSUE
GE	1-17-73	B	82679	CL481	1
SCALE		SHEET OF			

RSU-1		
QTY / UNIT	MODEL USED ON	ASS'Y NO.
APPLICATION		
CODE		
NOTICE TO PERSONS RECEIVING THIS DRAWING THE TECHNICAL MATERIEL CORPORATION claims proprietary right in the material disclosed hereon. This drawing is issued in confidence for engineering information only and may not be reproduced or used to manufacture anything shown hereon without permission from THE TECHNICAL MATERIEL CORPORATION to the user. This drawing is loaned for mutual assistance and is subject to recall at any time.		
FINISH		

UNLESS OTHERWISE SPECIFIED DIMENSIONS ARE IN INCHES AND INCLUDE CHEMICALLY APPLIED OR PLATED FINISHES	
DECIMALS	FRACTIONS
.X ± .05	1/64
.XX ± .01	TOLS. ANGLES
.XXX ± .005	0° - 30'