

5

4

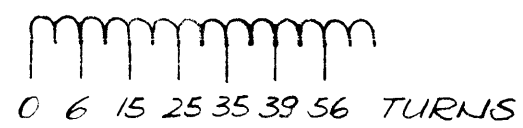
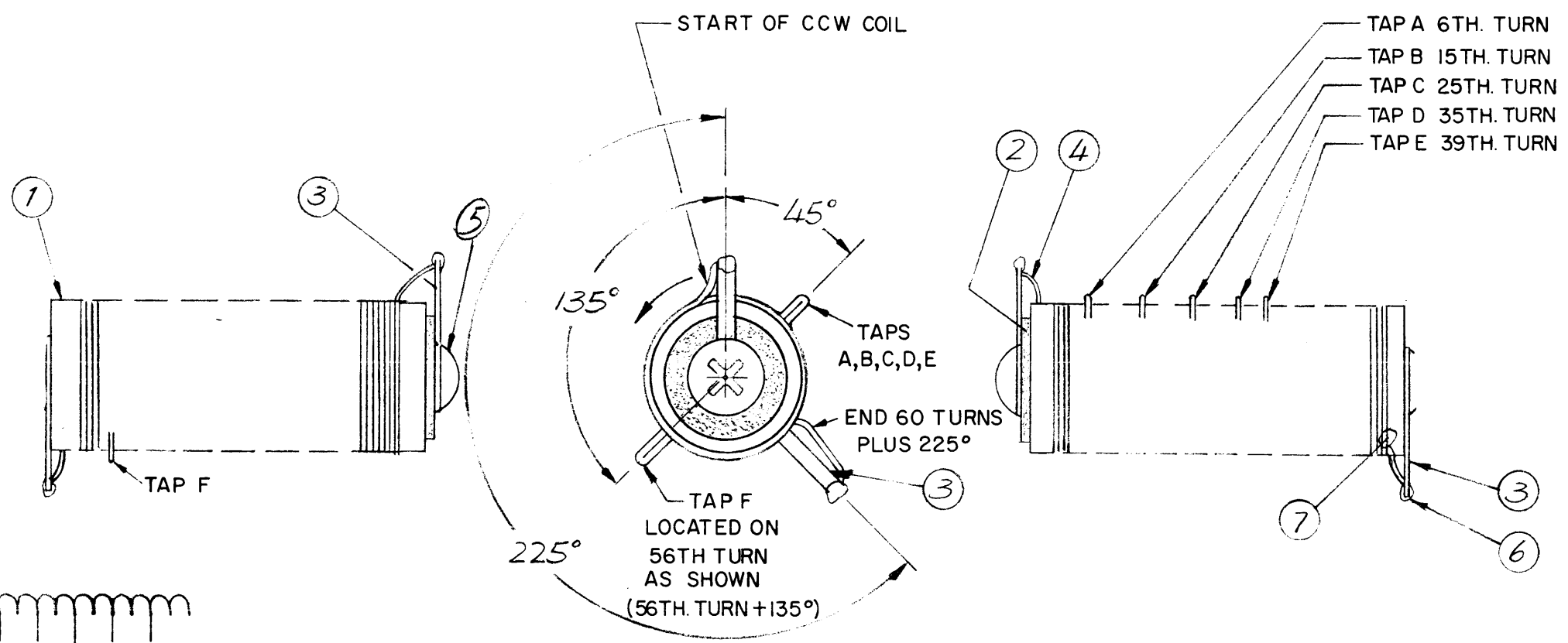
3

2

1

REVISIONS						
E.M.N. NO.	DRAFT	CHKD	ZONE	LTR	DESCRIPTION	DATE
	EL			Ø	ORIGINAL REVISION FOR PRODUCTION	10/20/72

A, B, C, D & E TAPS LOCATED ON TURNS AS SHOWN



WINDING - COUNTER CLOCKWISE CLOSE WOUND
FABRICATION - WIND FULL LENGTH AND TAP AT TURNS DESIGNATED. SOLDER ENDS OF COIL TO ITEM 3 WITH ITEM 6.

NOTE: 1. POSITION ITEMS 3 AS SHOWN.
 2. EXTEND LENGTH OF TAPS 1/4"
 3. SECURE WIRE TO FORM WITH EPOXY (ENDS)

REQ'D	ITEM	PART NUMBER	DESCRIPTION	SYM.
X	7	GL125	CEMENT EPOXY	
X	6	BS100	SOLDER TIN ALLOY	
1	5	50BP2520BN8	SCREW, MACHINE	
X	4	WI123-20	WIRE	
2	3	TE111-1	TERMINAL LUG	
1	2	WA109-55	WASHER, FIBER	
1	1	NS3W0420	INS. STANDOFF	

F.B. LIST OF MATERIAL

FINAL APPROVED	DATE	THE TECHNICAL MATERIEL CORP. MAMARONECK, NEW YORK LOADING COIL
MECH. DES.	DATE	
ELECT. DES.	DATE	
CHECKED	DATE	
DRAWN	DATE	SIZE B CODE IDENT. NO. 82679 DWG NO. CL478 ISSU
SCALE		SHEET OF

1	TMA 350	
QTY / UNIT	MODEL USED ON	ASS'Y NO.
APPLICATION		
CODE		
NOTICE TO PERSONS RECEIVING THIS DRAWING THE TECHNICAL MATERIEL CORPORATION claims proprietary right in the material disclosed hereon. This drawing is issued in confidence for engineering information only and may not be reproduced or used to manufacture anything shown hereon without permission from THE TECHNICAL MATERIEL CORPORATION to the user. This drawing is loaned for mutual assistance and is subject to recall at any time.		
FINISH		

UNLESS OTHERWISE SPECIFIED DIMENSIONS ARE IN INCHES AND INCLUDE CHEMICALLY APPLIED OR PLATED FINISHES

DECIMALS: .X ± .05, .XX ± .01, .XXX ± .005
 FRACTIONS: 1/64
 TOLS. ANGLES: 0° .30'