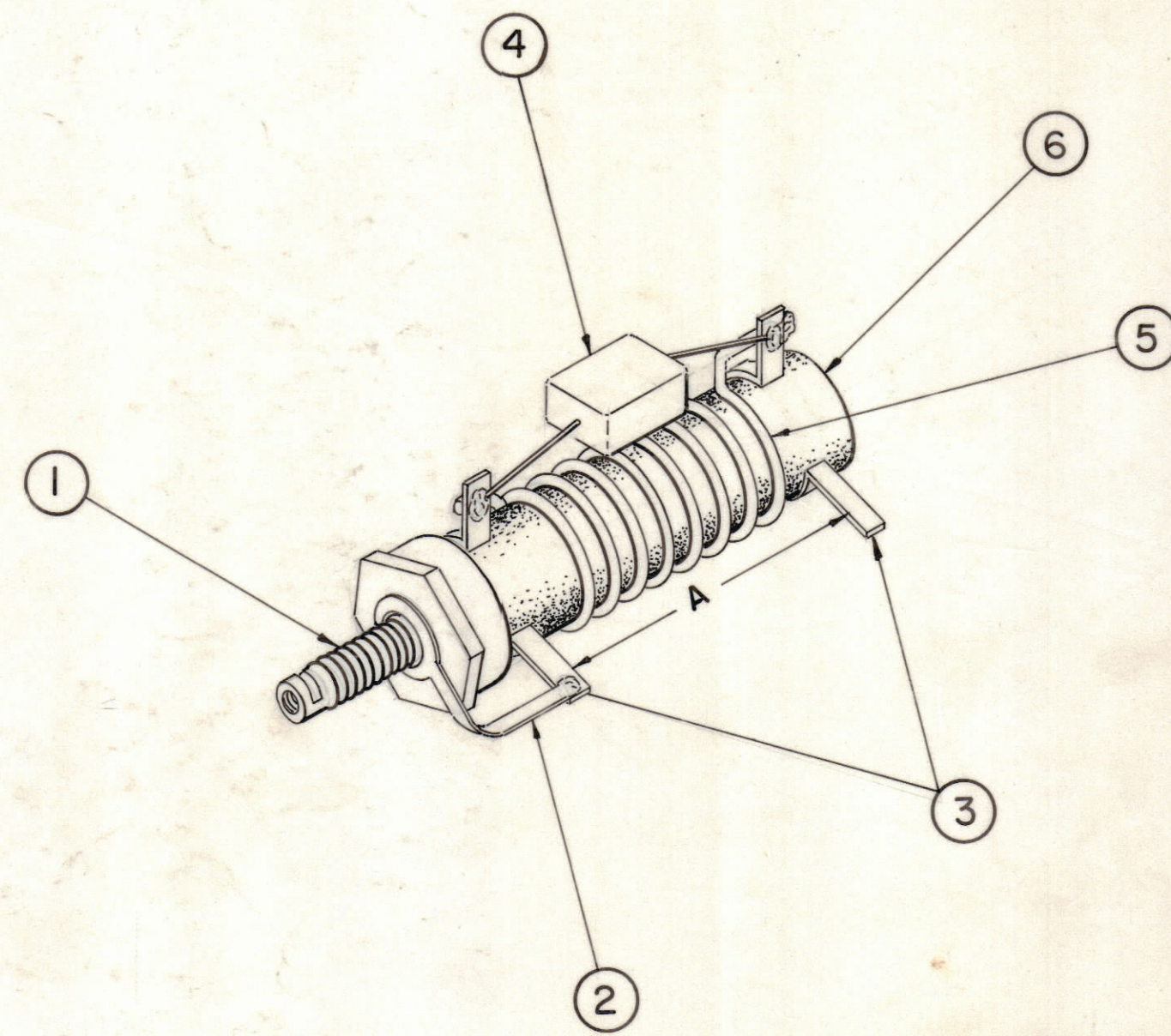


TMC P/N	NO. OF TURNS	WIRE	INDUCTANCE +- 10%	CAPACITOR	A DIM.	FREQ RANGE	CORE
CL -1	100	WI141-29	80 uh	CM 20B 39I	1.5/16	1.6 MC 1.75 MC	CI 109-12
-2	100	WI141-29	80 uh	CM 20B 30I	1.5/16	1.75 MC 2.0 MC	CI 109-12
-3	100	WI141-29	50 uh	CM 20B 18I	1.5/16	2.0 MC 2.5 MC	NONE
-4	75	WI141-29	30 uh	CM 20B 15I	1.5/16	2.5 MC 3.0 MC	NONE
-5	75	WI141-29	30 uh		1.5/16	3.0 MC 5.0 MC	NONE
-6	50	WI123-25	13 uh		1.5/16	5.0 MC 7.0 MC	NONE
-7	23	WI123-25	5 uh		1"	7.0 MC 12.0 MC	NONE
-8	18	WI123-16	1.7 uh		1-1/8	12.0 MC 18.0 MC	NONE
-9	10	WI123-14	.8 uh		1"	18.0 MC 26.0 MC	NONE
-10	28	WI123-22	5.2 uh		1-1/8	7.9 Mc	CI 109-12
-11	18	WI123-20	2.7 uh		1-1/8	7.9 MC	CI 109-12
-12	11	WI123-18	1.15 uh		1-1/8	7.9 MC	CI 109-12

REVISIONS							
E.M.N.NO	DRAFT	CHKD	ZONE	LTR	DESCRIPTION	DATE	APPROVED
	CL				ORIGINAL RELEASE FOR PRODUCTION	3-28-73	
21430	GDL	JFB		A	ADD CL475-10, -11 & -12 TO TMC P/N	6-30-76	*



**MFG ASSY INSTRUCTIONS**

1. PLACE ITEM 3 ON ITEM 1 AT LOCATION 'A' AS SHOWN.
2. WIND ITEM 5 ON ITEM 1 AS SHOWN AND SOLDER TO ITEM 3 ALONG WITH ITEM 2 AND ITEM 4 ACCORDING TO CHART.
3. COAT ITEM 6 WITH ITEM 7, AND POSITION IN CENTER OF COIL. (CL 475-18 & 2 ONLY)
4. COAT COIL WITH ITEM 8 AND BAKE IN OVEN 1/2 HOUR AT 215°F
5. TEST FOR INDUCTANCE ON Q METER AS SHOWN ON CHART.

QTY. REQ.	ITEM	PART NO.	DESCRIPTION	SYMBOL
	8	GL 104-2	INS. VARNISH ELEC.	
	7	GL 103-	ADHESIVE, NITRO CELLULOSE BASE	
	6	CI 109-12	CORE TUNING	
	5	WIRE	(SEE CHT.)	
	4	CAPACITOR	(SEE CHT.)	
	3	TE 153-3	COLLAR, LUG	
	2	TE III-1	LUG, SOLDER	
	1	CF 114-3	FORM, COIL	

QTY. REQ.	ITEM	PART NO.	DESCRIPTION	SYMBOL		
O.P. LIST OF MATERIAL						
FINAL APPROVAL		DATE	<b>THE TECHNICAL MATERIEL CORP.</b> MAMARONECK, NEW YORK  <b>COIL, RF, FIXED</b>			
MECH. DES.		DATE				
ELECT. DES.		DATE				
CHECKED		DATE				
DRAWN		DATE	SIZE	CODE IDENT NO.	DWG NO.	ISSUE
EVANGELIST		9/13/71	C	82679	CL475	A
SCALE			SHEET		OF	

QTY / UNIT	MODEL USED ON	ASS'Y NO.
	TM 125	
APPLICATION		
CODE		
NOTICE TO PERSONS RECEIVING THIS DRAWING		
<small>THE TECHNICAL MATERIEL CORPORATION claims proprietary right in the material disclosed hereon. This drawing is issued in confidence for engineering information only and may not be reproduced or used to manufacture anything shown hereon without permission from THE TECHNICAL MATERIEL CORPORATION to the user. This drawing is loaned for mutual assistance and is subject to recall at any time.</small>		

UNLESS OTHERWISE SPECIFIED DIMENSIONS ARE IN INCHES AND INCLUDE CHEMICALLY APPLIED OR PLATED FINISHES

TOLERANCES ON  
DECIMALS .X ± .05  
.FRACTIONS ± 1/64  
.ANGLES ± 0° -30'

MATERIAL

FINISH

D

C

B

A

D

C

B

A

4

3

2

1