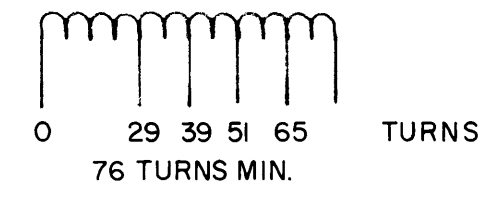
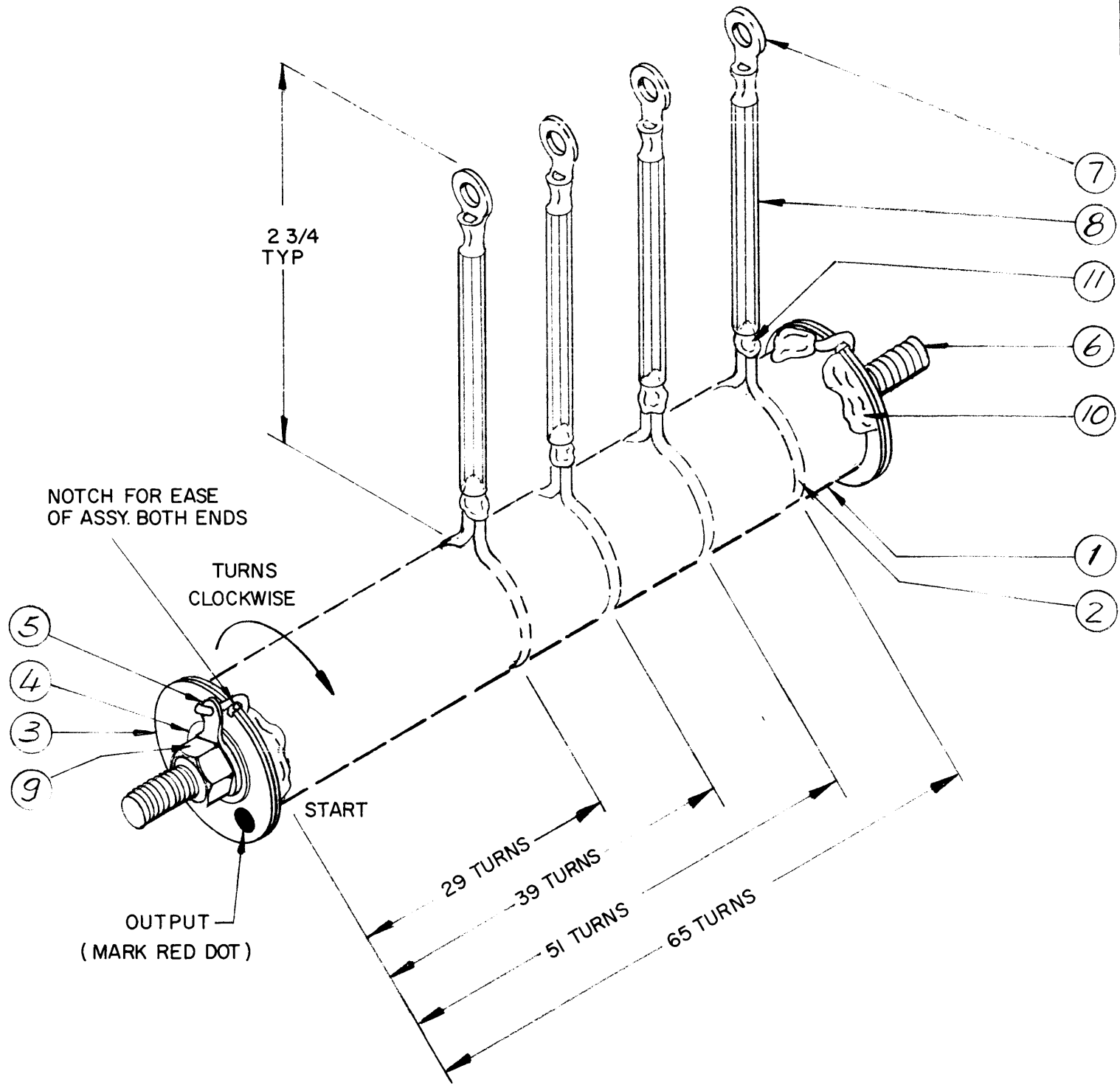


REVISIONS						DATE	APPROVED
E.M.N. NO.	DRAFT	CHKD	ZONE	LTR	DESCRIPTION	DATE	APPROVED
20909	GE	J		B	REVISE COMPLETELY & REDRAWN	10/25/72	EJ



WINDING- CLOCKWISE TURNS CLOSE WOUND FABRICATION

1. ASSEMBLE ITEMS 1, 3, 4, 5, 6, & 9
2. WIND FULL LENGTH AND TAP AS SHOWN AT 29, 39, 51, & 65 TURNS.
3. STAKE ENDS WITH EPOXY & SOLDER TO LUGS
4. FABRICATE TAPS BY INSERTING LEADS APPROX. 2 3/4" LONG, STRIP ENDS, COVER WITH TEFLON & SOLDER ON LUGS.

REQ'D	ITEM	PART NUMBER	DESCRIPTION	SYM.
X	11	BS100	SOLDER TIN ALLOY	
X	10	GL125	CEMENT EPOXY	
2	9	NTH2520BN14	NUT, HEX	
X	8	PX370-10-7	INS. SLVG. TEF.	
4	7	TE141-1	TERM LUG	
2	6	SM2520BN1250	ROD THD.	
2	5	TE104-5	TERM. LUG.	
2	4	FW25 HBN	WASHER, FLAT	
4	3	WA110-2	WASHER, FIBER	
X	2	WI139-2	WIRE	
1	1	NS3W0440	INS. STANDOFF	

F.B. LIST OF MATERIAL			
FINAL APPROVAL	BN	DATE	14 JAN 71
MECH. DES.	BN	DATE	14 JAN 71
ELECT. DES.	BN	DATE	14 JAN 71
CHECKED		DATE	
DRAWN	BN	DATE	12 JAN 71
SIZE	B	CODE IDENT. NO.	82679
		DWG NO.	CL467
SCALE		SHEET	OF

QTY / UNIT	MODEL USED ON	ASS'Y NO.
1	TLAM-1K	AS147
APPLICATION		
	CODE	

**NOTICE TO PERSONS RECEIVING THIS DRAWING**  
 THE TECHNICAL MATERIEL CORPORATION claims proprietary right in the material disclosed hereon. This drawing is issued in confidence for engineering information only and may not be reproduced or used to manufacture anything shown hereon without permission from THE TECHNICAL MATERIEL CORPORATION to the user. This drawing is loaned for mutual assistance and is subject to recall at any time.

UNLESS OTHERWISE SPECIFIED DIMENSIONS ARE IN INCHES AND INCLUDE CHEMICALLY APPLIED OR PLATED FINISHES

DECIMALS	FRACTIONS
.X ± .05	1/64
.XX ± .01	TOLS. ANGLES
.XXX ± .005	0° - 30'

MATERIAL

FINISH

THE TECHNICAL MATERIEL CORP.  
 MAMARONECK, NEW YORK

COIL, LOAD