

CL415 A

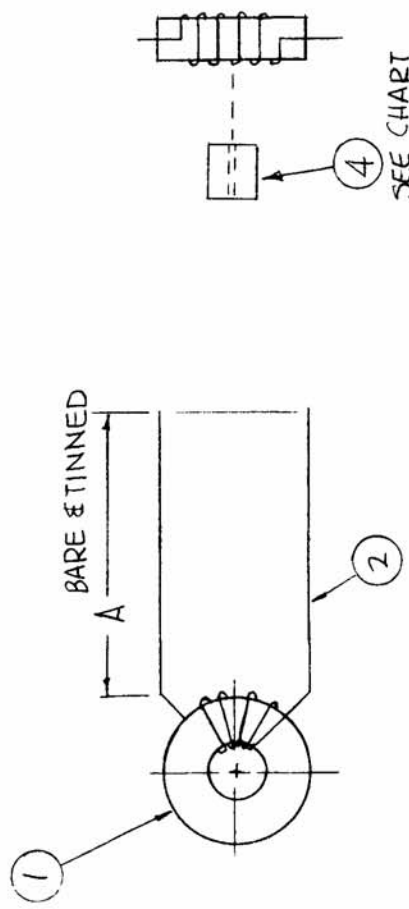
REQ. PER UNIT	1
MODEL	TLAA-2-SK
ASBY. NO.	AS498
DATE	10-3-66

SPECS:

CL 415-1 ~ Q=30 MIN. } ±10%
L=4.05 μH

CL 415-2 ~ Q=50 MIN. } ±10%
L=1.96 μH

MEASURED ON BOONTON
260 B Ω METER, 7.9 MZ



SEE CHART

TMC P/N	A	TURNS	SYMBOL	ITEM 4
CL415-1	3	6	T2000	YES
CL415-2	1-1/2	4		NO

SYM	DESCRIPTION	DATE	CH. NO.	DRAFTS	CHECKER	ENG. APP.
A	DELE. SYM. T2000; REAR PER UNIT WAS 1 ea.	3-2-67	17886	HLA	WAD	
X2	ORIGINAL RELEASE FOR PRODUCTION	12-1-66		WAD		
X1	IT. 4 REVERSED, Q WAS 40, 65	11-30-66				
X	ADC. IT. 5	11/28/66		Jc		
X	EXP. RELEASE	10-3-66	X			

REQ. ITEM	PART NO.	DESCRIPTION	SYMBOL
X 5	BS100	SOLDER, TIN ALLOY	
1 4	TE117-80	SPACER	
X 3	GL104-2	INSULEX, U85	
X 2	WI122-25	WIRE, ELEC. MAGNET	
1 1	CI128-1	CORE, TOROID	
		F. BUDETTI	
		THE TECHNICAL MATERIEL CORP. MAMARONECK, NEW YORK	
		COIL, RF, TOROID	
		MATERIAL	
		TYPE & TEMPER	
		HEAT TREAT. SPEC.	
		FINISH & SPEC. NO.	
		ELEC. DES. APP.	
		MECH. DES. APP.	
		FINAL APPROVAL	