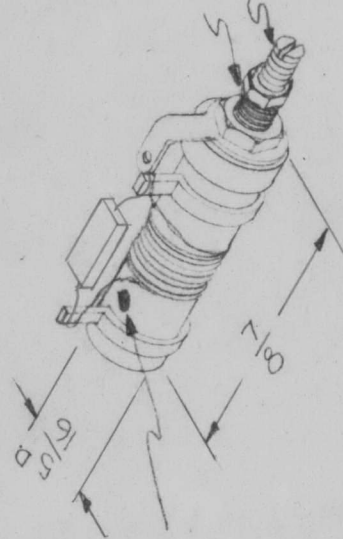


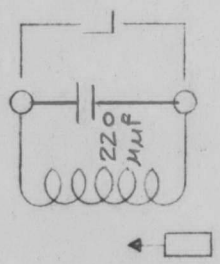
REQ. PER. UNIT	MODEL	USED ON
	AO-101	ASSY. NO. A0-102
		DATE
		CL-207 B

ELECT. SPECS.
 Total Ind - .95 - 1.01 mhy
 Q at test Freq - 90 or Greater
 Freq. (Test) - 25 mc
 MECH. SPECS.
 Wire - #30 Magnet Wire
 Core - Powdered Iron
 Form - Phenolic



Color Code Dot
 (Orange)

8-32 threaded Mtg. Bushing x 1/4 Lg.
 8-32 threaded tuning slug.

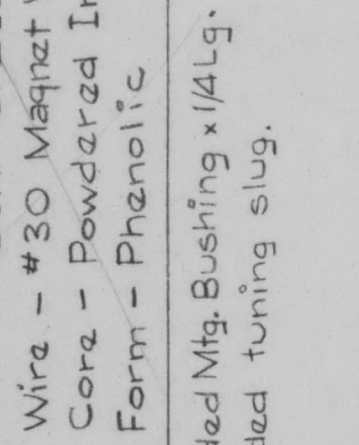


Hardware Supplied -
 One ea. 3-48 Hex Locking Nut } Brass,
 One ea. 8-32 Hex Mtg. Nut } Nickel
 One ea. #8 Internal Lockwasher } Platz

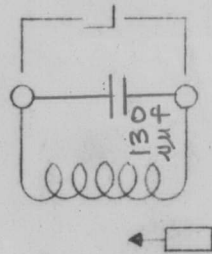
REQ. ITEM	PART NO.	DESCRIPTION	SYMBOL
B		THE TECHNICAL MATERIEL CORP. MAMARONECK, NEW YORK	
A		COIL, RF, TUNED, 8 MC	
ISSUE ITEM	CHANGED FROM		
	Q WAS 100		
	Q WAS 115		
TOLERANCES			
DEC. DIM. ±			
FRAC. DIM. ±			
ANGULAR DIM. ±			
DATE	CH. NO.	DRAFTS	CHKR
7-22-66	16619	RNE	[Signature]
4-6-64	11159	A.M.	[Signature]
SCALE:		NO. NPL	2A-1445-4
MAXIMUM ALLOWABLE TOLERANCES HAVE BEEN DETERMINED AND ANY DEVIATIONS WILL BE CAUSE FOR REJECTION. REMOVE ALL BURRS AND SHARP EDGES			
TYPE & TEMPER	HEAT TREAT. SPEC.	DRAWN	CHECKED
FINISH & SPEC. NO.			ELEC. DES. APP. MECH. DES. APP.
FINAL APPROVAL			
CL-207			B

REQ. PER UNIT	1	USED ON	CL-208 B
MODEL	AO-101	ASSY. NO.	AO-1DZ
DATE			

ELECT. SPECS.
 Total Ind - .95 - 1.01 μ hy
 Q at test freq - 90 or Greater
 Freq. (Test) - 25 mc
 MECH. SPECS.
 Wire - #30 Magnet Wire
 Core - Powdered Iron
 Form - Phenolic



Color Code Dot
(Yellow)



Hardware Supplied -
 One ea. 3-48 Hex Locking Nut } Brass,
 One ea. 8-32 Hex Mtg. Nut } Nickel
 One ea. #8 Internal Lockwasher } Plate

REQ. ITEM	PART NO.	DESCRIPTION	SYMBOL
B	Q WAS 100	THE TECHNICAL MATERIEL CORP. MAMARONECK, NEW YORK	
A	Q WAS 115	COIL, RF, TUNED, 10 MC	
ISSUE ITEM	CHANGED FROM		
TOLERANCES			
DEC. DIM. \pm			
FRAC. DIM. \pm			
ANGULAR DIM. \pm			
DATE	CH. NO.	DRAFTS	CHECKER
7-22-66	16619	RME	g.c.b.
4-6-64	11159	A.M.	C.I.B.
SCALE:	NPL	2A-1445-5	ENG. APP.
MAXIMUM ALLOWABLE TOLERANCES HAVE BEEN DETERMINED AND ANY DEVIATIONS WILL BE CAUSE FOR REJECTION. REMOVE ALL BURRS AND SHARP EDGES			
TYPE & TEMPER	HEAT TREAT. SPEC.	DRAWN	CHECKED
		h	
FINISH & SPEC. NO.			FINAL APPROVAL
			CL-208 B

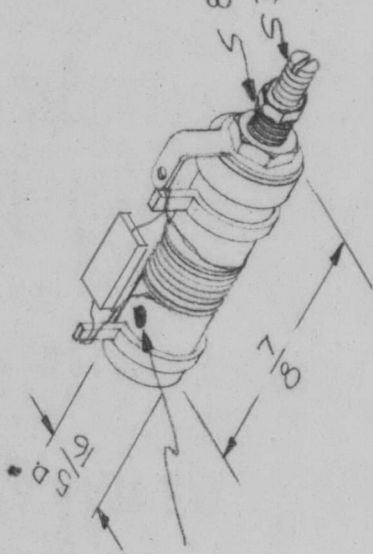
CL-209 B

REQ. PER. UNIT	MODEL	USED ON	DATE
1	AO-101	ASSY. NO. AO-102	

ELECT. SPECS.

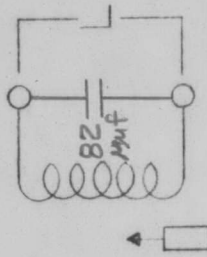
Total Ind - .95 - 1.01 uhy
 Q at test freq - 90 or Greater
 Freq. (Test) - 25 mc
 MECH. SPECS.

Wire - #30 Magnet Wire
 Core - Powdered Iron
 Form - Phenolic



Color Code Dot
 (Green)

8-32 threaded Mtg. Bushing x 1/4 Lg.
 3-48 threaded tuning slug.



Hardware Supplied -

- One ea. 3-48 Hex Locking Nut } Brass,
- One ea. 8-32 Hex Mtg. Nut } Nickel
- One ea. #8 Internal Lockwasher } Plate

REQ. ITEM	PART NO.	DESCRIPTION	SYMBOL
		THE TECHNICAL MATERIEL CORP. MAMARONECK, NEW YORK	
		COIL, RF, TUNED, 12 MC	
B	Q WAS 100		
A	Q WAS 115		
ISSUE ITEM	CHANGED FROM		
TOLERANCES			
DEC. DIM. ±			
FRAC. DIM. ±			
ANGULAR DIM. ±			
DATE	CH. NO.	DRAFTS	CHECKER
7-22-66	16619	RME	[Signature]
4-6-64	11159	A.M.	[Signature]
DATE	CH. NO.	DRAFTS	CHECKER
		NPL	2A-1445-6
SCALE:			
MAXIMUM ALLOWABLE TOLERANCES HAVE BEEN DETERMINED AND ANY DEVIATIONS WILL BE CAUSE FOR REJECTION. REMOVE ALL BURRS AND SHARP EDGES			
TYPE & TEMPER	HEAT TREAT. SPEC.	DRAWN	CHECKED
		[Signature]	[Signature]
FINISH & SPEC. NO.			FINAL APPROVAL
			CL-209 B

REQ. PER UNIT	MODEL	USED ON ASSY. NO.	DATE
	AO-101	AO-102	

CL-212

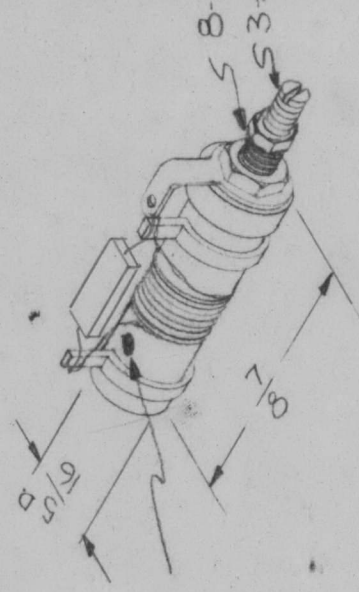
BA

ELECT. SPECS.

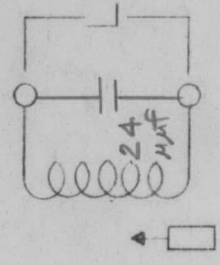
Total Ind - .95 - 1.01 μ hy
 Q at test Freq - 90 or Greater
 Freq. (Test) - 25 mc

MECH. SPECS.

Wire - #30 Magnet Wire
 Core - Powdered Iron
 Form - Phenolic



Color Code Dot
(Grey)



Hardware Supplied -

- One ea. 3-48 Hex Locking Nut } Brass,
- One ea. 8-32 Hex Mtg. Nut } Nickel
- One ea. #8 Internal Lockwasher } Plate

REQ. ITEM	PART NO.	DESCRIPTION	SYMBOL
B	Q WAS 100	THE TECHNICAL MATERIEL CORP. MAMARONECK, NEW YORK	
A	Q WAS 115	COIL, RF, TUNED, 18 mc	
ISSUE ITEM	CHANGED FROM		
TOLERANCES			
DEC. DIM. \pm			
FRAC. DIM. \pm			
ANGULAR DIM. \pm			
DATE	CH. NO.	DRAFTS CHECKER	ENG. APP.
7-22-66	16619	RME	[Signature]
4-6-64	11159	AM.	[Signature]
SCALE:	6-32	NPL	2A-1445-9
MAXIMUM ALLOWABLE TOLERANCES HAVE BEEN DETERMINED AND ANY DEVIATIONS WILL BE CAUSE FOR REJECTION. REMOVE ALL BURRS AND SHARP EDGES			
TYPE & TEMPER	HEATTREAT. SPEC.	DRAWN	CHECKED
FINISH & SPEC. NO.			FINAL APPROVAL
			CL-212
			B

CL-213 B

USED ON

MODEL AO-101 ASSY. NO. A0-102 DATE

REQ. PER UNIT

ELECT. SPECS.

Total Ind - .95 - 1.01 wh

Q at test Freq - 90 or Greater

Freq. (Test) - 25 mc

MECH. SPECS.

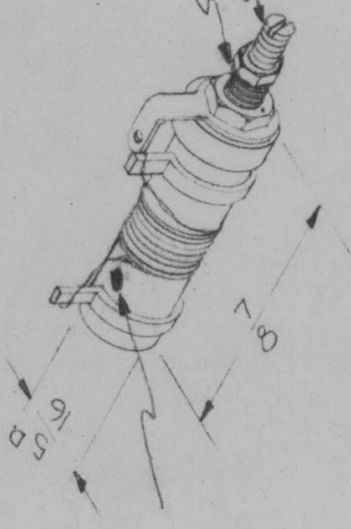
Wire - #30 Magnet Wire

Core - Powdered Iron

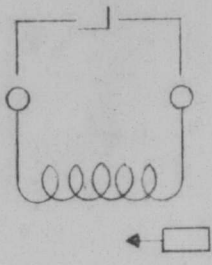
Form - Phenolic

8-32 threaded Mtg. Bushing x 1/4 Lg.

3-48 threaded tuning slug.



Color Code Dot (white)



Hardware Supplied -

- One ea. 3-48 Hex Locking Nut } Brass,
- One ea. 8-32 Hex Mtg. Nut } Nickel
- One ea. #8 Internal Lockwasher } Plate

REQ. ITEM	PART NO.	DESCRIPTION	SYMBOL
		THE TECHNICAL MATERIEL CORP. MAMARONECK, NEW YORK	
		COIL, RF, TUNED, 20 MC	
B			
A			
ISSUE ITEM	CHANGED FROM	DRAWN	CHECKED
		DATE	TYPE & TEMPER
		SCALE	HEAT TREAT. SPEC.
		DRAFTS	FINISH & SPEC. NO.
		CHECKER	ELEC. DES. APP.
		ENG. APP.	MECH. DES. APP.
TOLERANCES			
DEC. DIM. ±			
FRAC. DIM. ±			
ANGULAR DIM. ±			
MAXIMUM ALLOWABLE TOLERANCES HAVE BEEN DETERMINED AND ANY DEVIATIONS WILL BE CAUSE FOR REJECTION. REMOVE ALL BURRS AND SHARP EDGES			
2A-1445-10		FINAL APPROVAL	
CL-213		B	

REQ. PER UNIT	MODEL	USED ON	SYMBOL
	AO-101	ASSY. NO. AO-10Z	CL-214 B
		DATE	

ELECT. SPECS.

Total Ind - .77 - .83 μ hy
 Q at test Freq - 90 or Greater

Freq. (Test) - 25 mc

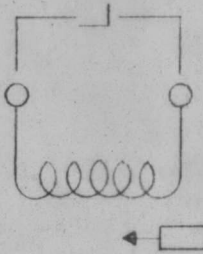
MECH. SPECS.

Wire - #30 Magnet Wire
 Core - Powdered Iron
 Form - Phenolic

8-32 threaded Mtg. Bushing x 1/4 Lg.
 3-48 threaded tuning slug.



Color Code Dot
 (Wh/Bk)



Hardware Supplied -

- One ea. 3-48 Hex Locking Nut } Brass,
- One ea. 8-32 Hex Mtg. Nut } Nickel
- One ea. #8 Internal Lockwasher } Plate

REQ. ITEM	PART NO.	DESCRIPTION	SYMBOL
B	Q WAS 100	THE TECHNICAL MATERIEL CORP. MAMARONECK, NEW YORK	
A 11	Q WAS 115	COIL, RF, TUNED, 22 MC	
ISSUE ITEM	CHANGED FROM		
TOLERANCES			
DEC. DIM. \pm			
FRAC. DIM. \pm			
ANGULAR DIM. \pm			
DATE	CH. NO.	DRAFTS	CHECKER
7-22-66	16619	RME	gcb
4-6-64	11159	A.M.	J.D. G.F.B.
SCALE:	NPL	2A-1445-11	ENG. APP.
MAXIMUM ALLOWABLE TOLERANCES HAVE BEEN DETERMINED AND ANY DEVIATIONS WILL BE CAUSE FOR REJECTION. REMOVE ALL BURRS AND SHARP EDGES			
TYPE & TEMPER	HEAT TREAT. SPEC.	DRAWN	CHECKED
FINISH & SPEC. NO.			FINAL APPROVAL
			CL-214 B

REQ. PER UNIT	MODEL	USED ON
	AO-101	ASSY. NO. AO-102
		DATE

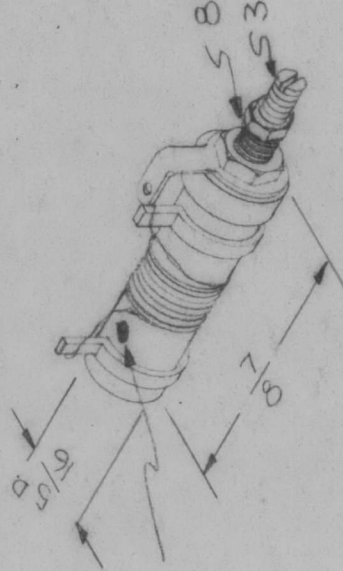
CL-215 B

ELECT. SPECS.

Total Ind - .67 - .73 mhy
 Q at test freq - 90 or Greater
 Freq. (Test) - 25 mc

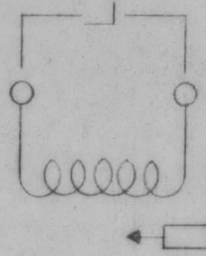
MECH. SPECS.

Wire - #30 Magnet Wire
 Core - Powdered Iron
 Form - Phenolic



Color Code Dot
 (wh/red)

8-32 threaded Mtg. Bushing x 1/4 Lg.
 3-48 threaded tuning slug.



Hardware Supplied -

- One ea. 3-48 Hex Locking Nut } Brass,
- One ea. 8-32 Hex Mtg. Nut } Nickel
- One ea. #8 Internal Lockwasher } Plate

REQ. ITEM	PART NO.	DESCRIPTION	SYMBOL
B	Q WAS 100	THE TECHNICAL MATERIEL CORP. MAMARONECK, NEW YORK	
A 12	Q WAS 115	COIL, RF, TUNED, 24 MHz	
ISSUE ITEM	CHANGED FROM		
TOLERANCES			
DEC. DIM. ±			
FRAC. DIM. ±			
ANGULAR DIM. ±			
	TYPE & TEMPER	HEAT TREAT. SPEC.	CHECKED
	FINISH & SPEC. NO.		
			FINAL APPROVAL

REQ. PER UNIT	MODEL	USED ON	SYMBOL
	AO-101	ASSY. NO. A0-102	CL-216 B
		DATE	

ELECT. SPECS.

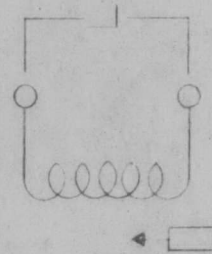
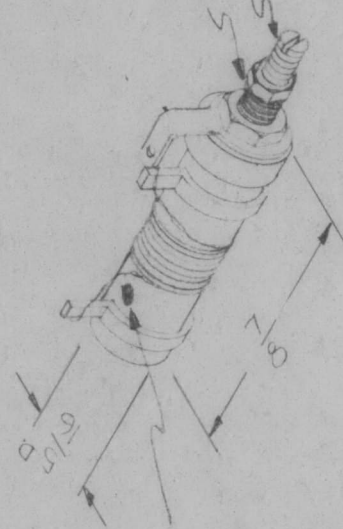
Total Ind - .58 - .64 wh
 Q at test Freq - 90 or Greater

Freq. (Test) - 25 mc

MECH. SPECS.

Wire - #30 Magnet Wire
 Core - Powdered Iron
 Form - Phenolic

Color Code Dot
 (wh/or)



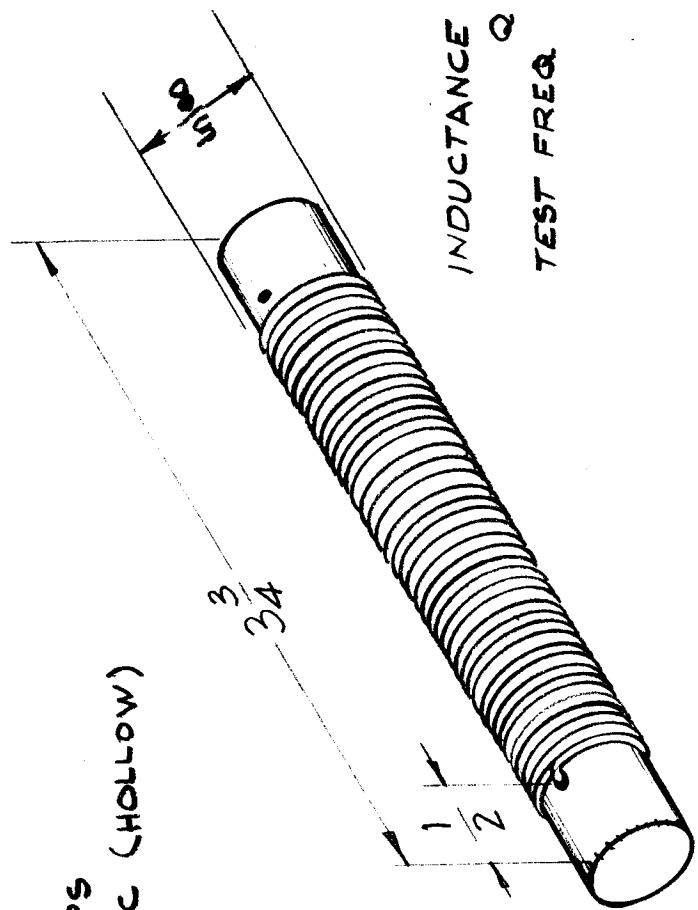
Hardware Supplied -

- One ea. 3-48 Hex Locking Nut } Brass,
- One ea. 8-32 Hex Mtg. Nut } Nickel
- One ea. #8 Internal Lockwasher } Plate

ISSUE ITEM	CHANGED FROM	DATE	CH. NO.	DRAFTS	CHECKER	ENG. APP.	REQ. ITEM	PART NO.	DESCRIPTION	SYMBOL	
B	Q WAS 100	7-22-66	16619	RME	gfb				THE TECHNICAL MATERIEL CORP. MAMARONECK, NEW YORK		
A 13	Q WAS 115	4-6-64	11159	A.M.	J.D.				COIL, RF, TUNED, 26 MC		
TOLERANCES											
DEC. DIM. ±											
FRAC. DIM. ±											
ANGULAR DIM. ±											
MAXIMUM ALLOWABLE TOLERANCES HAVE BEEN DETERMINED AND ANY DEVIATIONS WILL BE CAUSE FOR REJECTION. REMOVE ALL BURRS AND SHARP EDGES											
SCALE											
NO NPL											
DATE											
2A-1445-13											
MATERIAL											
HEAT TREAT. SPEC.											
TYPE & TEMPER											
DRAWN											
CHECKED											
ELEC. DES. APP											
MECH. DES. APP											
FINISH & SPEC. NO.											
FINAL APPROVAL											
CL-216 B											

REQ. PART UNIT	USED ON	MODEL	ASSY. NO.	DATE
8	GPT-40X	AP-102	3-4-60	CL-222

WIRE SIZE 16 AWG
 WINDING - SINGLE LAYER
 NO. OF TURNS 50
 INSULATION - ENAMEL
 CURRENT RATING 15 AMPS
 FORM - 1/2 QD. PHENOLIC (HOLLOW)
 CORE - FERRAMIC



INDUCTANCE - 30.5 MICROHENRIES ± 10%
 Q - 15 ± 10%
 TEST FREQ. - 2.5 MC

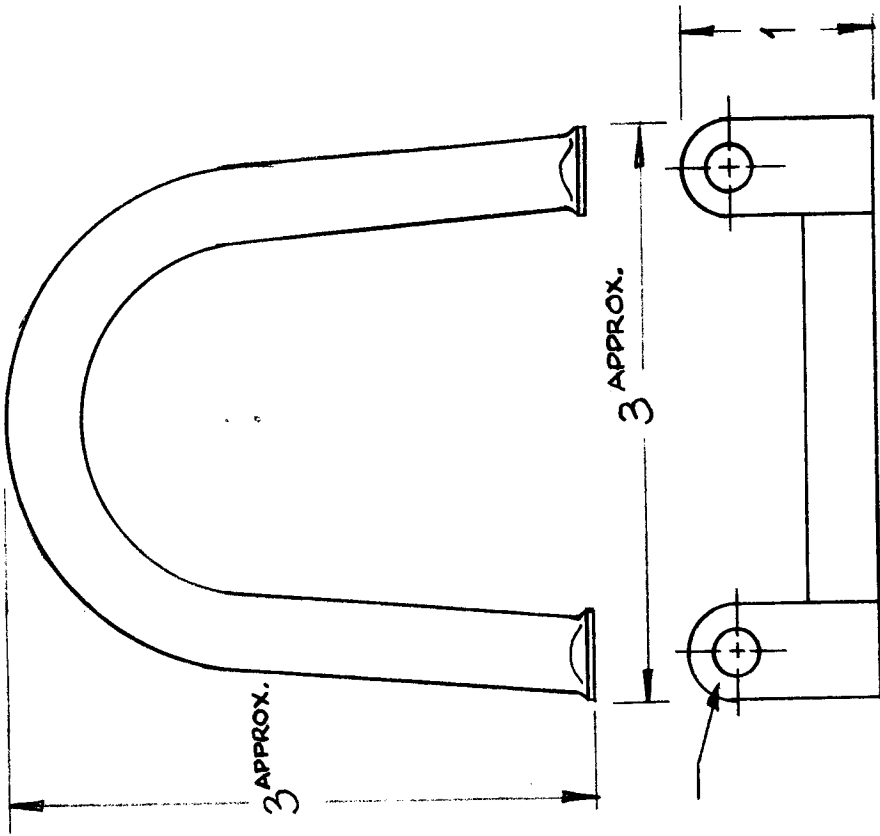
ISSUE	ITEM	CHANGED FR M	DATE	CH. NO.	DRAFTS	CHECKER	EN . APP.	REQ. ITEM	PART NO.	DESCRIPTION	SYMBOL
D		ADDED ± 10% INDUCTANCE Q-WAS .35 OR GREATER	1-16-67	17676	L.A.M.	JCB	JCB			THE TECHNICAL MATERIEL CORP. MAMARONECK, NEW YORK	
C		± 10% ADDED TO IND Q VALUE WAS .35	11/14/64	17273	LHD	JCB	JCB			COIL, RF, FIXED, INTERCONNECT	
B	1	COIL INFORMATION NOTES ADDED	5-19-60	2273	AD	JCB	JCB			FILTER	
A	2	30.5 ± 10% INDUCTANCE	4-5-60	1998	MB	JCB	JCB				
ISSUE	ITEM	CHANGED FR M	DATE	CH. NO.	DRAFTS	CHECKER	EN . APP.	REQ. ITEM	PART NO.	DESCRIPTION	SYMBOL
TOLERANCES								MATERIAL		DRAWN	
DEC. DIM. ±								TYPE & TEMPER		CHECKED	
FRAC. DIM. ±								HEAT TREAT. SPEC.		FINAL APPROVAL	
ANGULAR DIM. ±								FINISH & SPEC. NO.		ELEC. DES. APP. MECH. DES. APP.	
SCALE: 2A-1838								DRAWN		JCB	
MAXIMUM ALLOWABLE TOLERANCES HAVE BEEN DETERMINED AND ANY DEVIATIONS WILL BE CAUSE FOR REJECTION. REMOVE ALL BURRS AND SHARP EDGES								CHECKED		JCB	
								HEAT TREAT. SPEC.		CL-222	
								FINISH & SPEC. NO.		D	

CL-223 B

OPER. FREQ.	REQ. PER UNIT	M DEL	ASSTY. NO.	USED ON	DATE
19-24 Mc	1	GPT-40K	AX-209		4-6-60
19-24 Mc	1	GPT-40K () 3 AS-120	AX-294		12-23-63
24-28 Mc	1	GPT-40K () 4 AS-125	AX-459		12-23-63

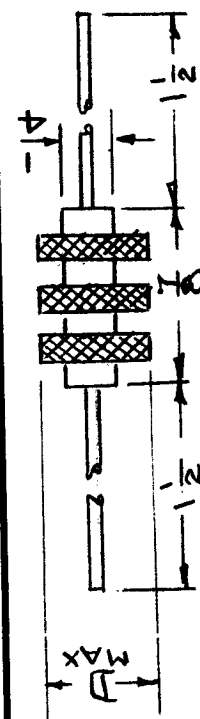
INDUCTANCE - .15 μ hy
 OPER FREQ. - SEE CHART

MATERIAL - 3/8 OD COPPER
 FINISH - SILVER PLATE



15/64 D. - 2 Req'd

SYMB L	DESCRIPTION	PART NO.	REQ. ITEM	CH. NO.	DRAFTS	CHECKER	ENG. APP.	SCALE:	TOLERANCES	DEC. DIM. \pm	FRAC. DIM. \pm	ANGULAR DIM. \pm
	THE TECHNICAL MATERIEL CORP. MAMARONECK, NEW YORK								MAXIMUM ALLOWABLE TOLERANCES HAVE BEEN DETERMINED AND ANY DEVIATIONS WILL BE CAUSE FOR REJECTION. REMOVE ALL BURRS AND SHARP EDGES			
	COIL, RF.			10642	1/11/63	Whe		1/P175				
	"L" SECTION			8064	1-23-63	Whe						
	DRAWN											
	CHECKED											
	HEAT TREAT. SPEC.											
	TYPE & TEMPER											
	FINISH & SPEC. NO.											
	STOCK SIZE											
	MATERIAL											
	FINAL APPROVAL											
	CL-223											



REQ. PER UNIT	MODEL	USED ON	CL 226
1	CHL-1	ASSY. NO.	
	CLL-1		
	RTMU-1	A 3639	
			DATE
			10/2/64

TMC P/N	MFG. P/N	IND. MH AT 1KCS ±5%	Q MINIMUM Q	FREQ KHZ	RESISTANCE (OHMS) MAX	SELF RESONANT FREQ. MHZ ±20%	CURRENT MA MAXIMUM	TOTAL PI	DIM D MAX.	CORE MATERIAL
CL-226-1	6302	2.50	106	250	9	1.3	160	3	.469	FERRITE
CL-226-2	6304	5.00	91	250	14	1.0	160	3	.531	FERRITE
CL-226-3	6306	10.00	108	79	31	.71	100	3	.531	FERRITE
CL-226-4	6308	25.0	102	79	82	.47	65	3	.531	FERRITE
CL-226-5	6310	50.0	113	79	127	.33	65	3	.625	FERRITE
CL-226-6	4662	1.0	83	250	8.6	2.6	160	3	.469	IRON

NOTE: DIM. ARE REF. UNLESS OTHERWISE INDICATED

REQ. ITEM	PART NO.	DESCRIPTION	SYMBOL
		STOCK SIZE	
		MATERIAL	
		COIL, RF	
		THE TECHNICAL MATERIEL CORP. MAMARONECK. NEW YORK	
		W.F. JAD	O.P.
		DRAWN	FINAL APPROVAL
		T.G.	CL 226
		ELEC. DES. APP. MECH. DES. APP.	
		FINISH & SPEC. NO.	

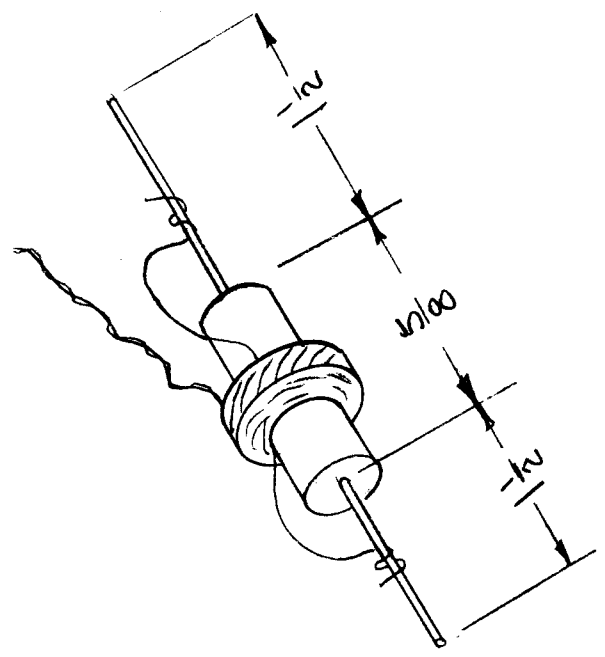
SYM	DESCRIPTION	DATE	CH. NO.	DRAFTS	CHECKER	ENG. APP.
G	REVISED & REDRAWN	7/13/66	1670	CV		
	UNLESS OTHERWISE SPECIFIED DIMENSIONS ARE IN INCHES AND INCLUDE CHEMICALLY APPLIED OR PLATED FINISHES	SCALE				
	TOLERANCES	FRACTIONS				
	.X ±.05	± 1/64				
	.XX ±.01	ANGLES				
	.XXX ±.005	± 0° 30'				
	CODE					
	SAC1-7					

CL-227 A

USED ON	
REQ. PER UNIT	DATE
2	4/18/60
MODEL	
CMO	

ELECTRICAL SPECS.
 L-500 μ H \pm 5%
 Q-90 OR GREATER
 F-790 KC

MECHANICAL SPEC.
 CORE - POWDERED IRON
 WINDING - 190 TURNS OF
 #36 AWG DSB



REQ. ITEM		PART NO.		DESCRIPTION		SYMBOL	
A				THE TECHNICAL MATERIEL CORP.			
				MAMARONECK, NEW YORK			
				COIL, RF, FIXED, 500 μ H			
				MATERIAL			
				STOCK SIZE			
				TYPE & TEMPER		CHECKED	
				HEAT TREAT. SPEC.		EUMEL APPROVAL	
				FINISH & SPEC. NO.		CL-227 A	
ISSUE ITEM		DATE	CH. NO.	DRAFTS	CHECKER	ENG. APP.	
A		5-36	4797	RU	gob		
CHANGED FROM		SCALE: 1A-1871					
TOLERANCES		MAXIMUM ALLOWABLE TOLERANCES HAVE BEEN DETERMINED AND ANY DEVIATIONS WILL BE CAUSE FOR REJECTION. REMOVE ALL BURRS AND SHARP EDGES					
DEC. DIM. \pm		FRAC. DIM. \pm 1/64					
ANGULAR DIM. \pm							

CL-228 A

USED ON
ASPT. NO. 4-18-60 DATE

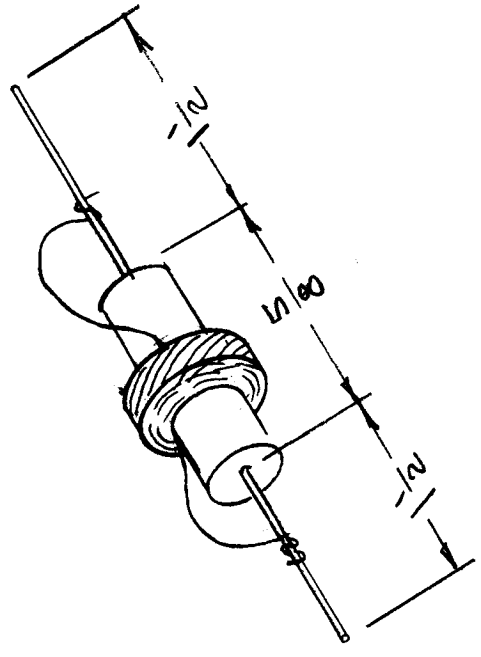
REQ. PER UNIT 1
MODEL CMO

ELECTRICAL SPECS.

L-32 μ H \pm 5 μ H
Q-60 OR GREATER
F-(TEST)-2.5 MC

MECHANICAL SPEC.

CORE - POWDERED IRON
WINDING 45 TURNS OF
#36 WIRE, DSB



DEC. DIM. \pm	
FRAC. DIM. \pm	V64
ANGULAR DIM. \pm	

TOLERANCES
MAXIMUM ALLOWABLE TOLERANCES HAVE BEEN DETERMINED AND ANY DEVIATIONS WILL BE CAUSE FOR REJECTION. REMOVE ALL BURRS AND SHARP EDGES

ISSUE/ITEM	CHANGED FROM	DATE	CH. NO.	DRAFTS	CHECKER	ENG. APP.
A 1	On Elec. Spec. \pm 5 μ H Added to "L"	6-1-61	4984	RA	JLB	af
SCALE: 1A-1872						

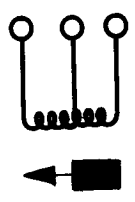
TYPE & TEMPER	HEAT TREAT. SPEC.
DRAWN	CHECKED
A.R.F.	[Signature]
ELEC. DES. APP.	MECH. DES. APP.
	CL-228 A

REQ. ITEM	PART NO.	DESCRIPTION	SYMBOL
		THE TECHNICAL MATERIEL CORP. MAMARONECK, NEW YORK	
	STOCK SIZE	COIL, RF, FIXED, 32 μ H	
	MATERIAL		
	FINISH & SPEC. NO.		

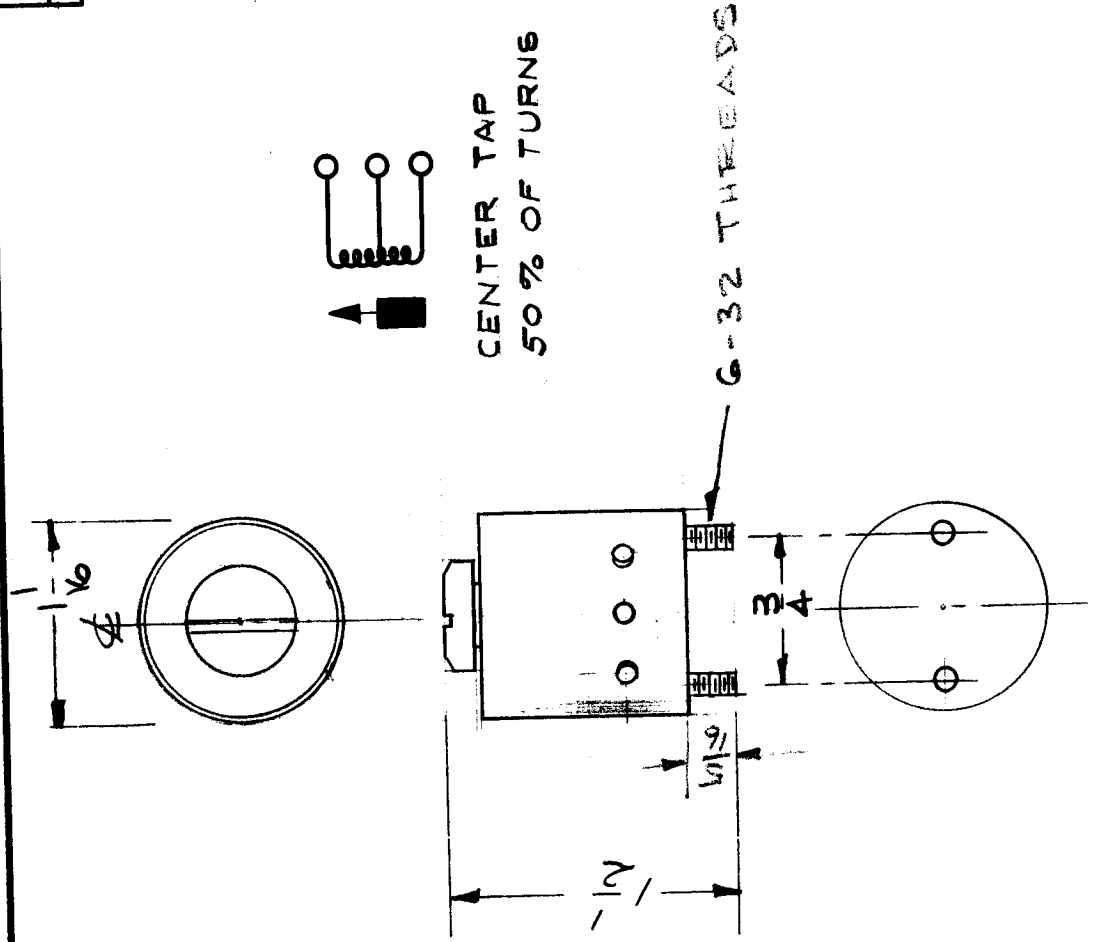
REQ. PER UNIT	M DEL	USED ON ASSY. NO.	DATE
1	CLL		

CL-229

NOMINAL INDUCTANCE : 10.05 MH
 Q = AT 18 KCS GREATER THEN 100
 STYLE : AT 6
 SCREW ADJ. : -10% OF NOM - IND.



CENTER TAP
 50% OF TURNS



REQ. ITEM	PART NO.	DESCRIPTION	SYMBOL
		THE TECHNICAL MATERIEL CORP. MAMARONECK, NEW YORK	
		TOROID, VARIABLE	
		MATERIAL	
		TYPE & TEMPER	
		HEAT TREAT. SPEC.	
		DRAWN	
		CHECKED	
		FINAL APPR VAL	
		ELEC. DES. APPR. MECH. DES. APP	
		FINISH & SPEC. NO.	
		SCALE: 5-401-95 ()	
		MAXIMUM ALLOWABLE TOLERANCES HAVE BEEN DETERMINED AND ANY DEVIATIONS WILL BE CAUSE FOR REJECTION. REMOVE ALL BURRS AND SHARP EDGES	
ISSUE ITEM	CHANGED FROM	TOLERANCES	
		DEC. DIM. ±	
		FRAC. DIM. ±	
		ANGULAR DIM. ±	

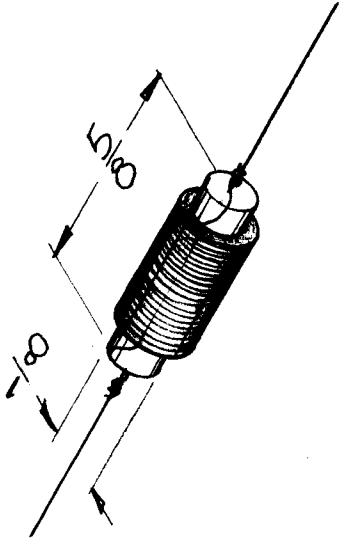
CL-229

REQ. PER UNIT	USED ON	CL-230
M DEL	ASSY. NO.	
	DATE	5-6-60

MODEL	QUANTITY	FUNCTION	SYMBOL
GPR-90RXD	1	BFO Plate Coil	L37

— SPECIFICATIONS —

INDUCTANCE ~ 370 MICROHENRIES.
 Q ~ 70 or GREATER.
 FREQ. (TEST) ~ 790 KC.
 CORE ~ POWDERED IRON.
 WIRE ~ #36 DOUBLE SILK LITZ.

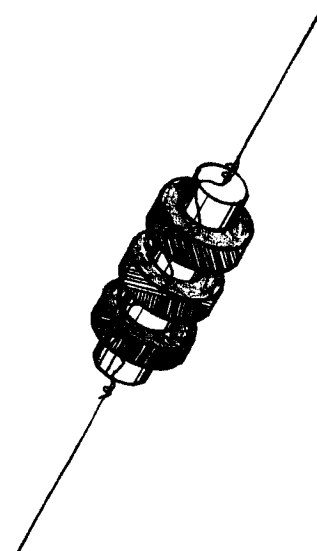


REG. ITEM	ITEM	PART NO.	DESCRIPTION	SYMBOL
			THE TECHNICAL MATERIEL CORP. MAMARONECK, NEW YORK	
			COIL, RF, FIXED, 370 μ hy.	
ISSUE	ITEM	CHANGED FROM	DRAWN <i>W. N. ...</i> CHECKED <i>[Signature]</i> FINAL APPROVAL <i>[Signature]</i>	
TOLERANCES				
SCALE: 2A-1839				
MAXIMUM ALLOWABLE TOLERANCES HAVE BEEN DETERMINED AND ANY DEVIATIONS WILL BE CAUSE FOR REJECTION. REMOVE ALL BURRS AND SHARP EDGES				
DEC. DIM. \pm				
FRAC. DIM. \pm				
ANGULAR DIM. \pm				
	FINISH & SPEC. NO.		ELEC. DES. APP. MECH. DES. APP.	
			CL-230	

REQ. PER UNIT		USED ON	
M DEL	ASSY. NO.	DATE	CL-231
		5-6-60	

USED ON MODEL	QUANTITY	FUNCTION	SYMBOL
GPR-90RxD	1	BFO Output Coil	L38

L - 585 μ hy (575-600)
 Q - 780
 FREQ - 790 KC
 CORE - POWDERED IRON
 WIRE - DOUBLE SILK, #36



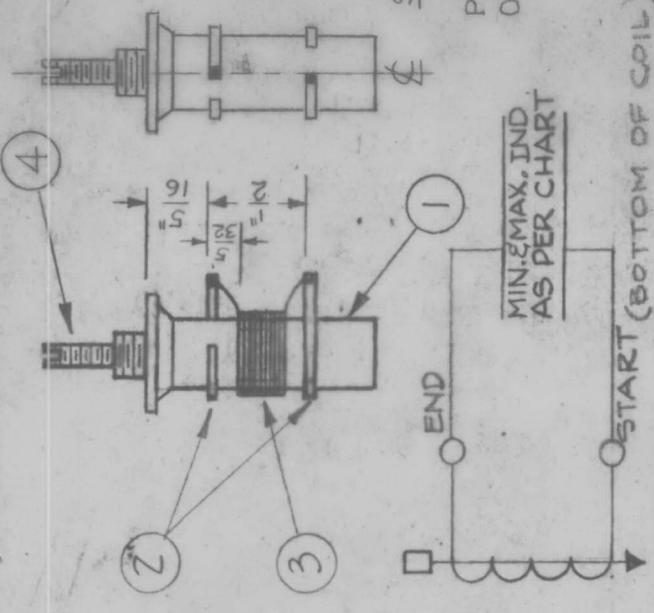
REQ. ITEM	PART NO.	DESCRIPTION	SYMBOL
		THE TECHNICAL MATERIEL CORP.	
		MAMARONECK, NEW YORK	
		COIL, RF, FIXED, 585 μ hy	
ISSUE ITEM	CHANGED FROM		
TOLERANCES			
SCALE: 1-A-1840			
DATE			
CH. NO.	DRAFTS	CHECKER	ENG. APP.
MAXIMUM ALLOWABLE TOLERANCES HAVE BEEN DETERMINED AND ANY DEVIATIONS WILL BE CAUSE FOR REJECTION. REMOVE ALL BURRS AND SHARP EDGES			
DEC. DIM. \pm			
FRAC. DIM. \pm			
ANGULAR DIM. \pm			
		D. M. A. [Signature]	
		CHECKED	FINAL APPROVAL
			CL-231
			ELEC. DES. APP. MECH. DES. APP.

PROCEDURE

- 1~ SECURE TERMINALS (ITEM 2) TO COIL FORM WITH INSULEX (ITEM 5).
- 2~ WIND 14 TURNS OF ITEM 3 (WIRE) ON COIL FORM, SINGLE LAYER, CLOSE WOUND.
- 3~ STAKE WIRE ENDS TO COIL FORM WITH Q-MAX, (ITEM 4).
- 4~ SOLDER LEADS TO TERMINALS.
- 5~ BAKE FOR 1/2 HR. AT 210°F.
- 6~ PAINT COIL WITH INSULEX (ITEM 5).
- 7~ BAKE FOR 1/2 HR. AT 210°F.
- 8~ TEST UNIT AS PER CHART AND SCHEMATIC WITH CORE. MIN. MAX INDUCTANCE, ACCOMPLISHED BY ADJUSTING TUNING SLUG.

(Use Boonton Q Meter Model 160A or Equiv.)

MAX. IND. must be less than 4.5 wh.
 MIN. IND. must be more than 1.5 wh.
 Q at 7.9 mc must be more than 40.
 OPERATING FREQ. - 510 KC.



SIDE VIEW
 NOTE
 POSITION
 OF LUGS

REQ. ITEM	PART NO.	DESCRIPTION	SYMBOL
X 6	BS-100	SOLDER, SOFT	
X 5	GL-104-Z	INSULEX-U-85	
1	CI-109-16	COIL SLUG	Yellow
X 3	WT-123-Z8	WIRE	
2	TE-153-2	TERMINAL	
1	CF-114-Z	COIL FORM	

THE TECHNICAL MATERIEL CORP.
 MAMARONECK, NEW YORK
 ASSEMBLY

TYPE & TEMPER	HEAT TREAT. SPEC.	DRAWN	CHECKED	FINAL APPROVAL
		<i>P.A.</i>	<i>[Signature]</i>	CL234 A

FINISH & SPEC. NO.
 ELEC. DES. APP. MECH. DES. APP.

ISSUE ITEM	CHANGED FROM	DATE	CH. NO.	DRAFTS	CHECKER	ENG. APP.
A	REV & REDWN FR 1" SIZE	7-20-67	18345	WHO	<i>[Signature]</i>	<i>[Signature]</i>

TOLERANCES
 DEC. DIM. ±
 FRAC. DIM. ±
 ANGULAR DIM. ±

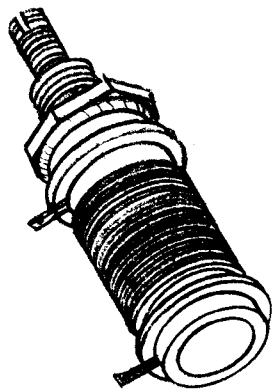
SCALE:
 MAXIMUM ALLOWABLE TOLERANCES HAVE BEEN DETERMINED AND ANY DEVIATIONS WILL BE CAUSE FOR REJECTION. REMOVE ALL BURRS AND SHARP EDGES

FORM 108-A

QTY. PER UNIT	MODEL	USED ON	DATE
1	CLL-1	ASST. NO.	6-2-60
			CL-235

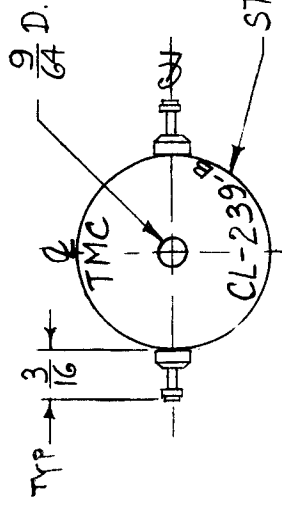
— SPECIFICATIONS —

MAX. IND. - must be less than 55 wh.
 MIN. IND. - must be more than 25 wh.
 QAT 2.5 mc must be more than 75
 OPERATING FREQ - 510 KC.



REQ. ITEM	ITEM	PART NO.	DESCRIPTION	SYMBOL		
			THE TECHNICAL MATERIEL CORP.			
			MAMARONECK, NEW YORK			
			COIL, RF. VARIABLE			
ISSUE ITEM	CHANGED FROM	DATE	CH. NO.	DRAFTS	CHECKER	ENG. APP.
				1A-191D		
TOLERANCES						
DEC. DIM. ±						
FRAC. DIM. ±						
ANGULAR DIM. ±						
SCALE: 1A-191D						
MAXIMUM ALLOWABLE TOLERANCES HAVE BEEN DETERMINED AND ANY DEVIATIONS WILL BE CAUSE FOR REJECTION. REMOVE ALL BURRS AND SHARP EDGES						
TYPE & TEMPER		HEAT TREAT. SPEC.	DRAWN			
P.A.			P.A.			
FINISH & SPEC. NO.			ELEC. DES. APP. MECH. DES. APP.			
			CHECKED			
			FINAL APPROVAL			
			CL-235			

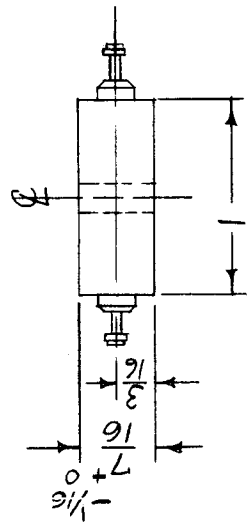
REQ. PER UNIT	1
MODEL	CHG-1
USED ON	ASST. NO.
DATE	9-1-60
CL-239	
B	



STAMP TMC PART # AS SHOWN

ELECTRICAL SPECIFICATION
 INDUCTANCE: 2.5 μ h 5%
 Q: 200 OR GREATER AT 16MC
 OPERATING RANGE: 9 - 16 MC.

ENCAPSULATED IN BLACK EPOXY



STANDARD DRAWING

REG. ITEM	PART NO.	DESCRIPTION	SYMBOL
B 1	Q WAS 250 OR GREATER 7/16 WAS 3/8	THE TECHNICAL MATERIEL CORP. MAMARONECK, NEW YORK	
A 1	ON ELECTRICAL SPEC. CHART "Q" WAS 250 AT 16MC OPERATING RANGE WAS 9-20MC	COIL, R.F.	
ISSUE ITEM	CHANGED FROM		
TOLERANCES			
DEC. DIM. \pm			
FRAC. DIM. \pm 1/64			
ANGULAR DIM. \pm			
DATE	CH. NO.	DRAFTS	CHECKER
6/16/64	11587	A.M.	Y
7-14-61	5257	G.P.L.	J.M.S.
DATE	CH. NO.	DRAFTS	CHECKER
SCALE: 5401-115 (6415)	MAXIMUM ALLOWABLE TOLERANCES HAVE BEEN DETERMINED AND ANY DEVIATIONS WILL BE CAUSE FOR REJECTION. REMOVE ALL BURRS AND SHARP EDGES		
TYPE & TEMPER	HEAT TREAT. SPEC.	DRAWN	CHECKED
		BY	BY
FINISH & SPEC. NO.		ELEC. DES. APP. MECH. DES. APP.	
		CL-239	
		B	

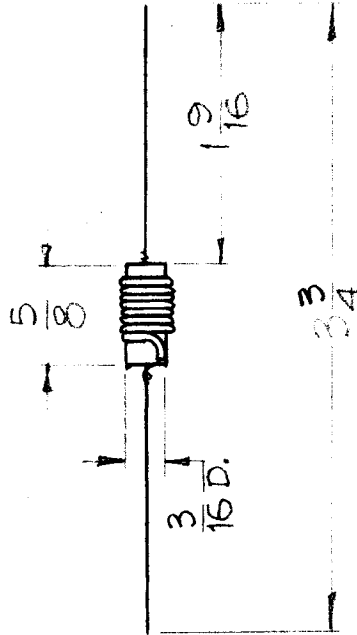
REQ. PER. UNIT	USED ON	
	MODEL	ASSY. NO.
2	CHG-1	MF/RF
		DATE
		9-21-60

CL-241

SPECIFICATIONS

L = .9 why ± .05 why
 Q = 110
 FREQ. = 25 Mcs

Solenoid Winding, Close Wound.



REQ. ITEM	PART NO.	DESCRIPTION	SYMBOL
		THE TECHNICAL MATERIEL CORP. MAMARONECK, NEW YORK	
		COIL, RF, FIXED, .9 why	
		DRAWN: JWC	
		CHECKED: JWC	
		FINAL APPROVAL: JWC	
		ELEC. DES. APP: JWC	
		MECH. DES. APP: JWC	
		FINISH & SPEC. NO.	CL-241

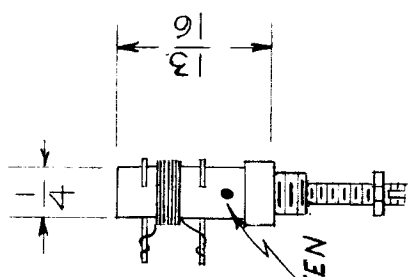
SCALE: 1A-1972

MAXIMUM ALLOWABLE TOLERANCES HAVE BEEN DETERMINED AND ANY DEVIATIONS WILL BE CAUSE FOR REJECTION. REMOVE ALL BURRS AND SHARP EDGES

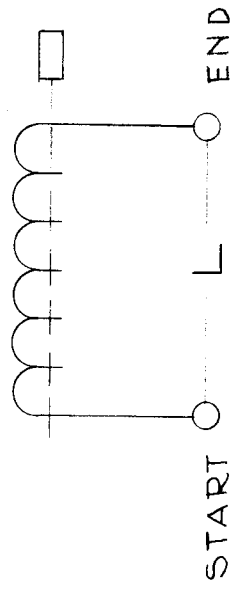
DEC. DIM. ±
 FRAC. DIM. ±
 ANGULAR DIM. ±

REQ. PER UNIT	1
MODEL	CHG-1
USED ON	ASSY. NO.
	DATE
	9-27-1960

CL-243 A



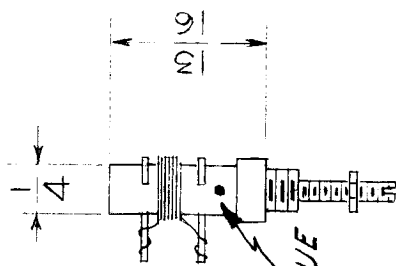
COLOR CODE GREEN



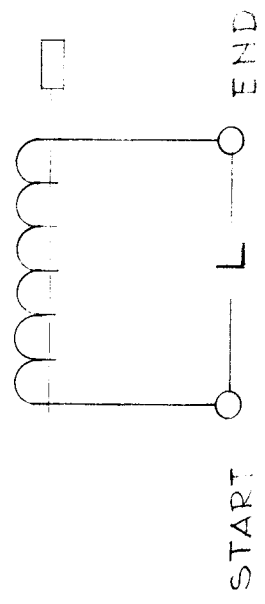
MODEL	REQ	FUNCTION	OPER FREQ MCS	SYM	TEST FREQ	Q. AT TEST FREQ MUST BE GREATER THAN	NOMINAL IND (why) W/O CORE
CHG-1	1	MULTIPLIER	10	L1118	7.9 MC	50	3.35

REQ. ITEM	PART NO.	DESCRIPTION	SYMBOL
		THE TECHNICAL MATERIEL CORP. MAMARONECK, NEW YORK	
		COIL, R.F. TUNED (BAND 6)	
		G. DE LUCIA	
		CHECKED	FINAL APPROVAL
		DRAWN	
		G.R.J.	
		ELEC. DES. APP. MECH. DES. APP.	CL-243 A
		FINISH & SPEC. NO.	
		STOCK SIZE	
		MATERIAL	
		HEAT TREAT. SPEC.	
		TYPE & TEMPER	
		CHECKER	
		DRAFTS	
		DATE	
		CH. NO.	
		12-20-60	
		3787	
		M.A.S.	
		SCALE: 2A-1979-1	
		MAXIMUM ALLOWABLE TOLERANCES HAVE BEEN DETERMINED AND ANY DEVIATIONS WILL BE CAUSE FOR REJECTION. REMOVE ALL BURRS AND SHARP EDGES	
		TOLERANCES	
		CHANGED FROM	
		DEC. DIM. ±	
		FRAC. DIM. ±	
		ANGULAR DIM. ±	

REQ. PER UNIT	MODEL	USED ON	DATE
1	CHG-1	ASST. N.	9-28-1960
			CL-244
			A



COLOR CODE BLUE



MODEL	REQ.	FUNCTION	OPER. FREQ. MCS.	SYM	TEST FREQ.	Q. AT TEST FREQ. MUST BE GREATER THAN	NOMINAL IND (why) W/D CORE
CHG-1	1	MULTIPLIER	12	L1117	7.9MC	50	2.45

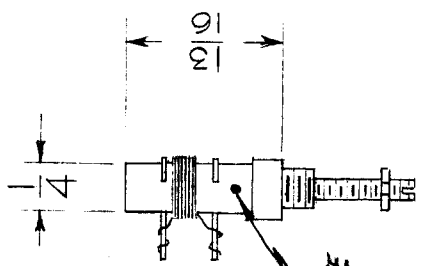
REQ. ITEM	PART NO.	DESCRIPTION	SYMBOL
		THE TECHNICAL MATERIEL CORP. MAMARONECK, NEW YORK	
		COIL, R.F., TUNED (BAND. 7)	
		<i>Q. drawings</i>	
		DRAWN <i>AKF</i>	
		CHECKED <i>AKF</i>	
		FINAL APPROVAL <i>[Signature]</i>	
		ELEC. DES. APP. MECH. DES. APP.	CL-244
		FINISH & SPEC. NO.	A

DATE 12-20-60
 CH. NO. 3787
 DRAFTS *MAF*
 CHECKER *AKF*
 ENG. APP. *[Signature]*

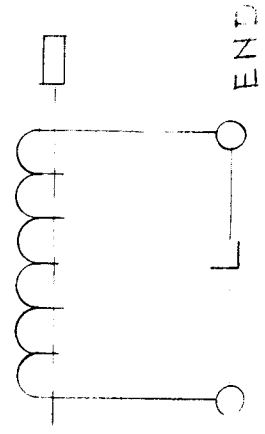
SCALE: 2A-1979-2
 MAXIMUM ALLOWABLE TOLERANCES HAVE BEEN DETERMINED AND ANY DEVIATIONS WILL BE CAUSE FOR REJECTION. REMOVE ALL BURRS AND SHARP EDGES

TOLERANCES
 DEC. DIM. ±
 FRAC. DIM. ±
 ANGULAR DIM. ±

REQ. PER UNIT	1	MODEL	CHG-1	USED ON	CL-245	DATE	9-28-1960
		ASSY. NO.					



COLOR CODE WHITE



START

END

MODEL	CHG-1	REQ.	1	FUNCTION	MULTIPLIER	OPER. FREQ. MCS.	14	SYM.	L1116	TEST FREQ.	7.9MC	Q. AT TEST FREQ. MUST BE GREATER THAN	50	NOMINAL IND (W/O CORE)	1.7
-------	-------	------	---	----------	------------	------------------	----	------	-------	------------	-------	---------------------------------------	----	------------------------	-----

REQ. ITEM	PART NO.	DESCRIPTION	SYMBOL
		THE TECHNICAL MATERIEL CORP. MAMARONECK, NEW YORK	
		COIL, RF, TUNED (BANDS)	
		<i>g.b. head</i>	
		DRAWN	CHECKED
		<i>G.R.F.</i>	
		HEAT TREAT. SPEC.	FINISH APPROVAL
		FINISH & SPEC. NO.	CL-245
		ELEC. DES. APP. MECH. DES. APP.	A

ISSUE ITEM: A 1
 CHANGED FROM: COLOR CODE WHITE ADDED
 DATE: 12-20-60
 CH. NO.: 3787
 DRAFTS: *WDR*
 CHECKER: *JE*
 ENG. APP.:

TOLERANCES
 SCALE: 2A-1979-3

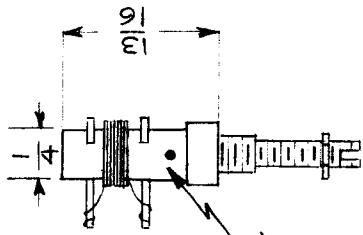
MAXIMUM ALLOWABLE TOLERANCES HAVE BEEN DETERMINED AND ANY DEVIATIONS WILL BE CAUSE FOR REJECTION. REMOVE ALL BURRS AND SHARP EDGES

DEC. DIM. ±
 FRAC. DIM. ±
 ANGULAR DIM. ±

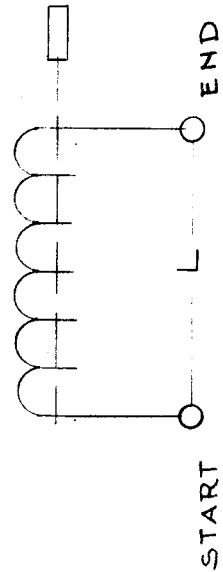
REQ. PER UNIT	USED ON	
	MODEL	DATE
1	CHG-1	9-27-1960

CL-246 A

MODEL	REQ.	FUNCTION	OPER. FREQ. MCS.	SYM.	TEST FREQ.	Q. AT TEST FREQ. MUST BE GREATER THAN	NOMINAL IND. (uhy) % CORE
CHG-1	1	MUET. BANDS 9	16	L1115	7.9 MC	65	1.23



COLOR CODE BLACK



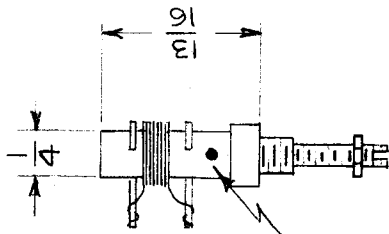
REQ. ITEM	PART NO.	DESCRIPTION	SYMBOL
		THE TECHNICAL MATERIEL CORP.	
		MAMARONECK. NEW YORK	
		COIL, RF, TUNED	
		BAND 9	
		<i>J. de Lenc</i>	
		DRAWN	CHECKED
		<i>G.R.F.</i>	
		FLEC. DES. APP	MECH. DES. APP
		FINISH & SPEC. NO.	
		CL-246	A

ISSUE ITEM: A 1
 CHANGED FROM: 12-20-60 3787
 DATE: 12-20-60
 CH. NO.: 3787
 DRAFTS: *W.A.F.*
 CHECKER: *W.A.F.*
 ENG. APP.:

TOLERANCES

SCALE: 2A-1981-1
 MAXIMUM ALLOWABLE TOLERANCES HAVE BEEN DETERMINED AND ANY DEVIATIONS WILL BE CAUSE FOR REJECTION. REMOVE ALL BURRS AND SHARP EDGES

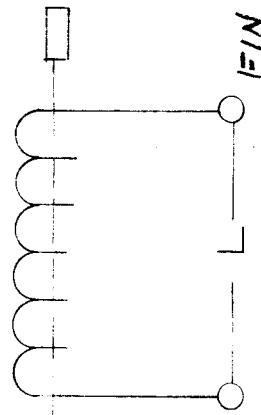
REQ. PER UNIT	USED ON	CL-249	A
MODEL	ABSY. N.	DATE	
CHG-1		9-26-1960	



COLOR CODE RED

OPER FREQ. MCS	CHG-1 SYM.	TEST FREQ.	Q. AT TEST FREQ. MUST BE GREATER THAN	NOMINAL IND. (WWS) W/ CORE
22	L1121			
22	L1109	25 MC	90	0.63
24	L1110			
24	L1120			

A REQUIRED IN CHG-1

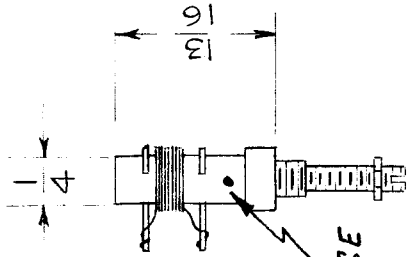


START

FIN

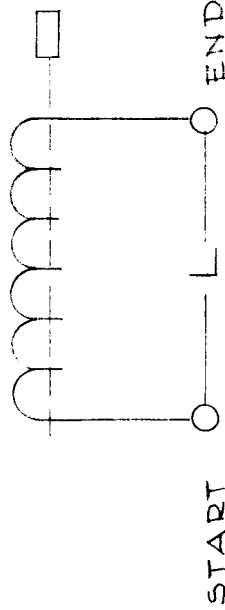
REQ. ITEM	PART NO.	DESCRIPTION	SYMBOL
		THE TECHNICAL MATERIEL CORP.	
		MAMARONECK, NEW YORK	
		COIL, RF, TUNED	
		HF AMPLIFIER	
		Q. DE LUCCIA	
		DRAWN	FINAL APPROVAL
		Q.R.V.	CL-249
		ELEC. DES. APP	MECH. DES. APP
FINISH & SPEC. NO.			
TOLERANCES			
SCALE: 2A-1981-4			
MAXIMUM ALLOWABLE TOLERANCES HAVE BEEN DETERMINED AND ANY DEVIATIONS WILL BE CAUSE FOR REJECTION. REMOVE ALL BURRS AND SHARP EDGES			
DEC. DIM. ±			
FRAC. DIM. ±			
ANGULAR DIM. ±			
ISSUE ITEM	CHANGED FROM	DATE	CH. NO.
A	2	12-20-60	2786
	1		
DRAFTS CHECKER ENG. APP.			
DATE			
CHART NO. REQ. WAS 2			
COLOR CODE RED ADDED			

REQ. PER. UNIT	USED ON	CL-251	A
MODEL	ASSY. NO.	CHG-1	
	DATE	9-26-1960	



COLOR CODE ORANGE

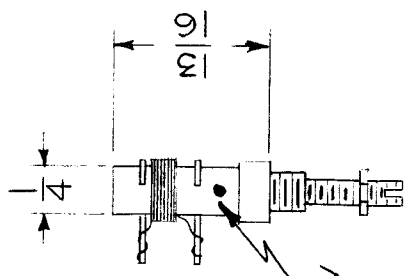
OPER FREQ. MCS.	SYM.	TEST FREQ.	Q. AT TEST FREQ. MUST BE GREATER THAN	NOMINAL IND. (why) % CORE
26	L1119	25MC	85	0.45
26	L1111	25MC	85	0.45
28	L1112	25MC	85	0.45



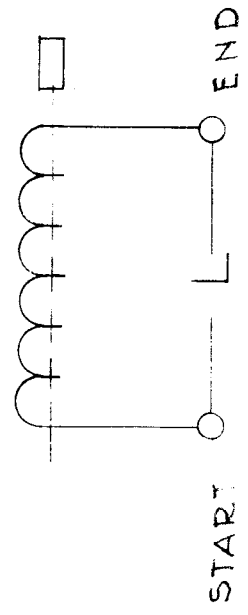
REQ. ITEM	PART NO.	DESCRIPTION	SYMBOL
		THE TECHNICAL MATERIEL CORP.	
		MAMARONECK, NEW YORK	
		COIL, RF, TUNED	
		G. DE LUCA	
		DRAWN	FINAL APPROVAL
		A.R.F.	CL-251
		ELEC. DES. APP.	MECH. DES. APP.
<p>SCALE: 2A-1981-6</p> <p>MAXIMUM ALLOWABLE TOLERANCES HAVE BEEN DETERMINED AND ANY DEVIATIONS WILL BE CAUSE FOR REJECTION. REMOVE ALL BURRS AND SHARP EDGES</p>			
ISSUE ITEM	CHANGED FROM	DATE	CH. NO.
A	2 CHART WAS 2 REQ. PER UNIT	12-20-60	3786
1	COLOR CODE ORANGE ADDED		
<p>TOLERANCES</p> <p>DEC. DIM. ±</p> <p>FRAC. DIM. ±</p> <p>ANGULAR DIM. ±</p>			

REQ. PER. UNIT	USED ON	
	MODEL	DATE
1	CHG-1	9-27-1960

CL-253 A



COLOR CODE YELLOW



MODEL	REQ.	FUNCTION	OPER. FREQ. MCS.	SYM.	TEST FREQ.	Q. AT TEST FREQ. MUST BE GREATER THAN	NOMINAL IND (uhy) W/O CORE
CHG-1	1	MULTIPLIER	30	L1113	25MC	80	0.36

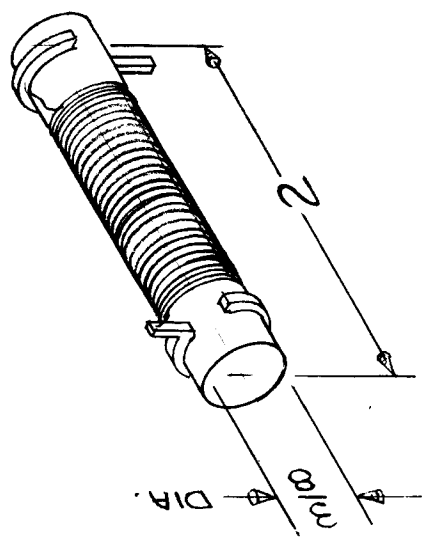
REQ. ITEM	PART NO.	DESCRIPTION	SYMBOL
		THE TECHNICAL MATERIEL CORP. MAMARONECK, NEW YORK	
	STOCK SIZE	COIL, RF, TUNED (BAND 16)	
	MATERIAL	G. DELUCIA	
	TYPE & TEMPER	DRAWN	CHECKED
	HEAT TREAT. SPEC.	G.R.F.	
	FINISH & SPEC. NO.	ELEC. DES. APP. MECH. DES. APP.	
ISSUE ITEM	CHANGED FROM	TOLERANCES	
A 1	COLOR CODE YELLOW ADDED	MAXIMUM ALLOWABLE TOLERANCES HAVE BEEN DETERMINED AND ANY DEVIATIONS WILL BE CAUSE FOR REJECTION. REMOVE ALL BURRS AND SHARP EDGES	
DATE	CH. NO.	DRAFTS	CHECKER
12-20-60	3787	M.F.	J.F.
SCALE: 2A-1981-8			
DEC. DIM. ±			
FRAC. DIM. ±			
ANGULAR DIM. ±			

CL-253 A

REQ. PER. UNIT 2	USED ON		DATE 9-30-60
	MODEL ATS-CU-2	ASSY. NO.	
			CL-254

ELECT. SPECS.
 L - 185 UHY ± 15 UHY
 Q - 50 OR GREATER
 F - (TEST) - 790 KC

MECH. SPECS.
 CORE - FERRITE
 WINDING - 69 TURNS * 26 MAGNET WIRE



REQ. ITEM	PART NO.	DESCRIPTION	SYMBOL
		THE TECHNICAL MATERIEL CORP.	
		MAMARONECK, NEW YORK	
		COIL, RF, FIXED, 185 UHY	
MATERIAL			
STOCK SIZE			
TYPE & TEMPER			
HEAT TREAT. SPEC.			
FINISH & SPEC. NO.			
ELEC. DES. APP.			
MECH. DES. APP.			
CHECKED			
DRAWN			
FINAL APPROVAL			
			CL-254

SCALE: 2A-1544
 MAXIMUM ALLOWABLE TOLERANCES HAVE BEEN DETERMINED AND ANY DEVIATIONS WILL BE CAUSE FOR REJECTION.
 REMOVE ALL BURRS AND SHARP EDGES

ISSUE ITEM
 CHANGED FROM
 TOLERANCES
 DEC. DIM. ± DIM.
 FRAC. DIM. ± FOR REF.
 ANGULAR DIM. ± REF.

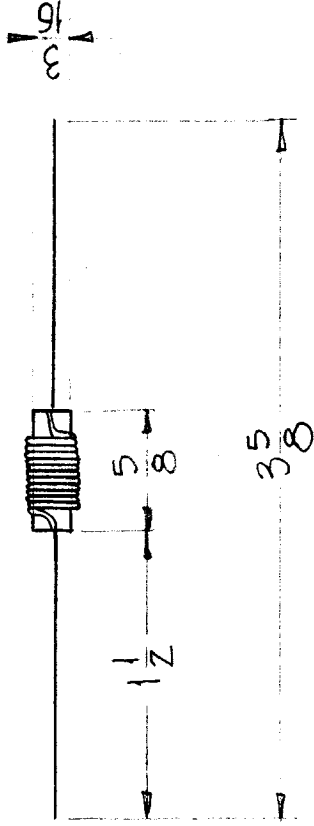
REQ. PER. UNIT	1	USED ON	CL-255
MODEL	CHG-1	ASSY. NO.	IF. SECT
		DATE	10-17-60

SPECIFICATIONS

$L = 2.5 \mu\text{hy} (\pm 5\%)$

$Q = 100$ or Greater

FREQ = 7.9 MCS



REQ. ITEM	CHANGED FROM	DATE	CH. NO.	DRAFTS	CHECKER	ENG. APP.	REQ. ITEM	PART NO.	DESCRIPTION	SYMBOL	
									THE TECHNICAL MATERIEL CORP. MAMARONECK, NEW YORK		
									COIL, RF TUNED		
									18 MCS TRAP COIL		
ISSUE ITEM									<i>Draft</i>	<i>BP</i>	
									<i>AKJ</i>	FINAL APPROVAL	
										CL-255	
TOLERANCES							FINISH & SPEC. NO.				
DEC. DIM. \pm							ELEC. DES. APP				
FRAC. DIM. \pm							MECH. DES. APP				
ANGULAR DIM. \pm											

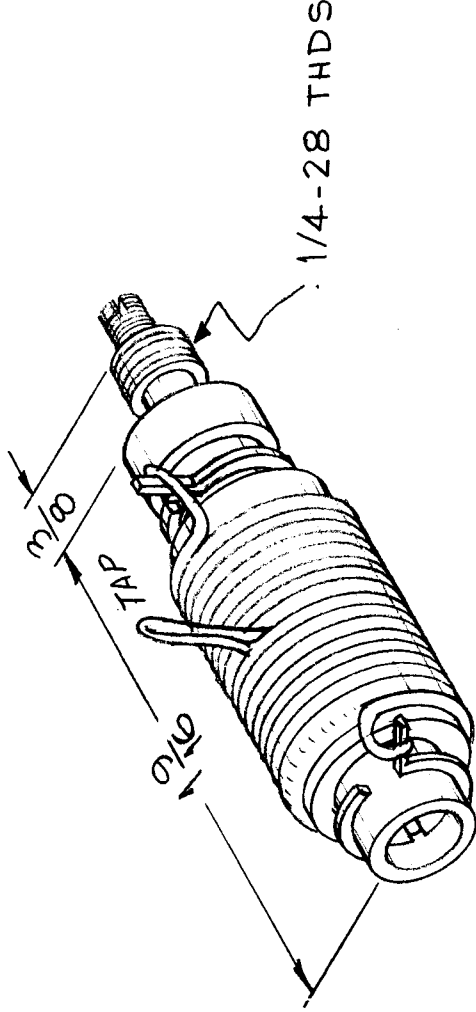
SCALE: 1A-2000
 MAXIMUM ALLOWABLE TOLERANCES HAVE BEEN DETERMINED AND ANY DEVIATIONS WILL BE CAUSE FOR REJECTION. REMOVE ALL BURRS AND SHARP EDGES

SPECIFICATIONS

TMC PART NO.	L MAX	L MIN	"Q"	F	RANGE
CL 256	4.7uh	3.7uh	140@4.6uh	7.9 MC	4-8 MC
CL 256-2	7.7uh	5.95uh	163@6.1uh	7.9 MC	3.3-6.4 MC

REQ. PER. UNIT	1
MODEL	RFD-1
ASSY. NO.	
DATE	10-24-60

CL-256 C



ISSUE ITEM	CHGD PART NO., REPOSITION, TERM. RING, CL 256 WAS 145 @ 4.1uh	DATE	CH. NO.	DRAFTS	CHECKER	ENG. APP.	REQ. ITEM	PART NO.	DESCRIPTION	SYMBOL	
C	7-19-66	16568	RME	gfb	gfb				THE TECHNICAL MATERIEL CORP. MAMARONECK, NEW YORK		
B	7-5-66			gfb	gfb				COIL, R.F. TUNED		
A	6/11/64	11546	A.M.	@	gfb						
TOLERANCES							DRAWN: <i>D. J. ...</i>				
DEC. DIM. ±							CHECKED: <i>F. ...</i>				
FRAC. DIM. ±							ELEC. DES. APP. MECH. DES. APP.				
ANGULAR DIM. ±							FINISH & SPEC. NO.				
SCALE: 1A-2002							MATERIAL				
MAXIMUM ALLOWABLE TOLERANCES HAVE BEEN DETERMINED AND ANY DEVIATIONS WILL BE CAUSE FOR REJECTION. REMOVE ALL BURRS AND SHARP EDGES							TYPE & TEMPER				
							HEAT TREAT. SPEC.				
							FINISH & SPEC. NO.				
							ELEC. DES. APP. MECH. DES. APP.				

REQ. PER UNIT	U ED ON	MODEL	ASSY. NO.	DATE
1		RFD-1	PALIK, SBT:IK	10-25-60

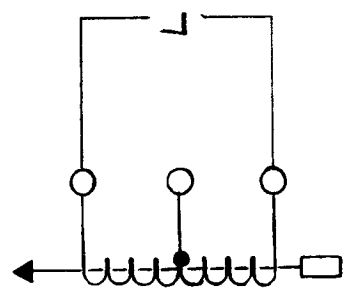
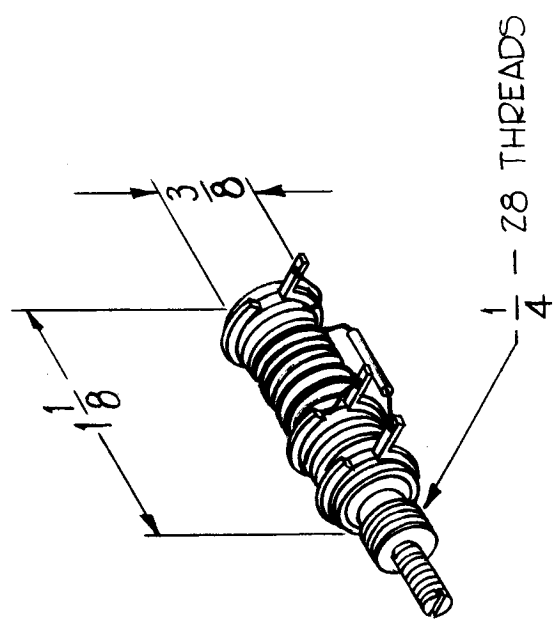
CL-257

ELECTRICAL SPECIFICATIONS

Operating Frequency Range 22-32 mc
 L - minimum inductance less than .20 uhy
 L - maximum inductance greater than .28 uhy
 Q - greater than 135
 F - 25 mc

MECHANICAL SPECIFICATIONS

Phenolic coil form
 Powdered iron tuning slug
 Bushing mounted
 4 turns
 AWG #20 Buss wire



REQ. ITEM	PART NO.	DESCRIPTION	SYMBOL
		THE TECHNICAL MATERIEL CORP. MAMARONECK, NEW YORK	
		COIL, R.F. TUNED (22-32 MC)	
		J.C. Biele	ALB
		DRAWN	FINAL APPROVAL
		HEAT TREAT. SPEC.	CL-257
		FINISH & SPEC. NO.	

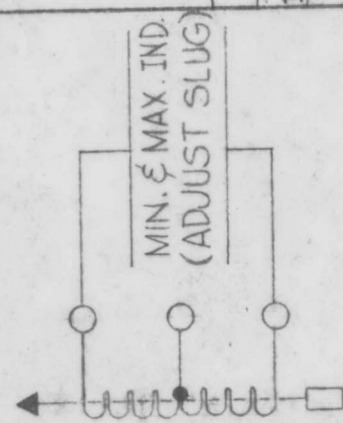
SCALE: Full, Do Not Scale 1A-2003
 MAXIMUM ALLOWABLE TOLERANCES HAVE BEEN DETERMINED AND ANY DEVIATIONS WILL BE CAUSE FOR REJECTION. REMOVE ALL BURRS AND SHARP EDGES

DEC. DIM. ±
 FRAC. DIM. ± 1/64
 ANGULAR DIM. ±

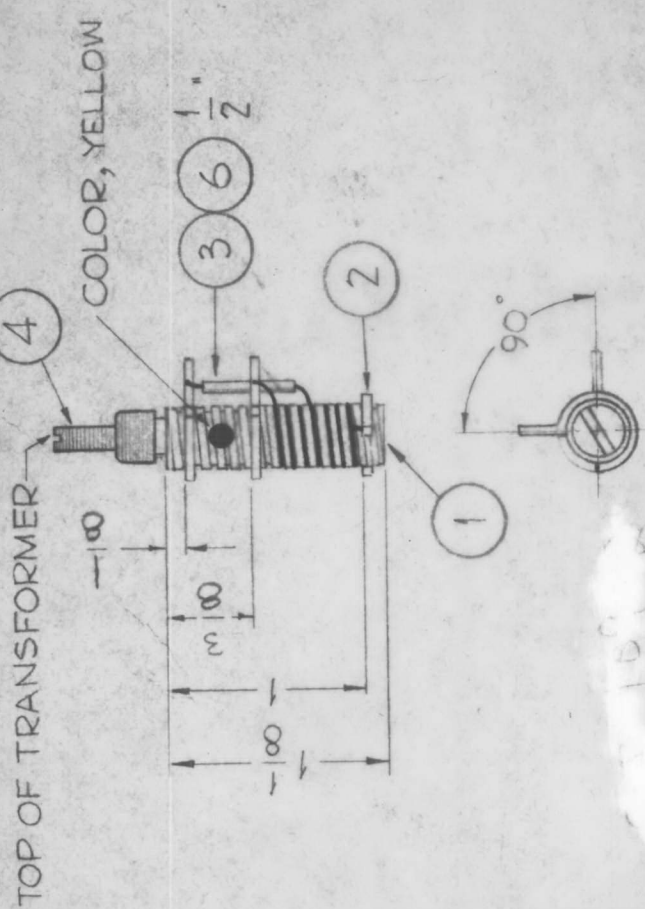
CL258 B

USED ON
 REQ. PER UNIT: 1
 MODEL: RFD-1
 ASSY. NO.: 10-25-6C
 DATE: 10-25-6C

- PROCEDURE**
- Force fit bushing (item 4) into form (item 1).
 - Secure terminals (item 2) to form with Insulex (item 6).
 - Wind 8-1/4 turns of wire (item 3) on form. Bring out tap at 4 turns from top. Slip Sleaving (item 7) over tap. Solder wire ends to proper terminals.
 - Paint winding with Insulex.
 - Bake for 1/2 hour at 250° F.
 - Insert core (item 5).
 - Test as shown below. Use Boonton Q - Meter Model 160A or Equivalent.



Minimum inductance must be less than - .50 uhy.
 Maximum inductance must be more than - .80 uhy.
 Q at 25 mc must be more than 130.
 Test frequency - 25 mc
 Operating frequency - 16-22 mc



REQ. ITEM	PART NO.	DESCRIPTION	SYMBOL
X 7	BS-100	Solder, Soft	
1/2"	PX-100-1-034	Insulation, Sleaving (Size 20)	Blk
X 5	GL-104-2	Insulex, U-85	
1 4	CI109-2	Core Tuning, Red	
X 3	WL-100-6	Wire, Buss (Size 20)	
3 2	TE-153-2	Terminal, Ring Type	
1 1	CF-128-2	Coil Form, Grooved	

THE TECHNICAL MATERIEL CORP.
 MAMARONECK, NEW YORK

CL-258 ASS'Y

(LZ10) R.F. COIL, TUNED, 16-22 MC

J.C. Biele *JCB*

TYPE & TEMPER: DRAWN: *JCB* CHECKED: *JCB* FINAL APPROVAL: *JCB*

FINISH & SPEC. NO.: CL258 B

MIN-MAX CHI REV. 2-7-69 19250 G.E. *H.G.* *F.B.*

REVISED & REDRAWN 8-22-67 18448 H.G. *H.G.* *F.B.*

ISSUE ITEM: CHANGED FROM: DATE: CH. NO.: DRAFTS: CHECKER: ENG. APP.

TOLERANCES: SCALE: Full, Do Not Scale

MAXIMUM ALLOWABLE TOLERANCES HAVE BEEN DETERMINED AND ANY DEVIATIONS WILL BE CAUSE FOR REJECTION. REMOVE ALL BURRS AND SHARP EDGES

DEC. DIM. ± 1/64
 FRAC. DIM. ± 1/64
 ANGULAR DIM. ±

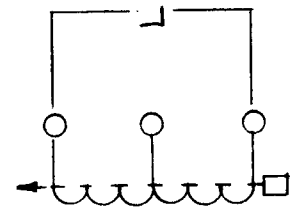
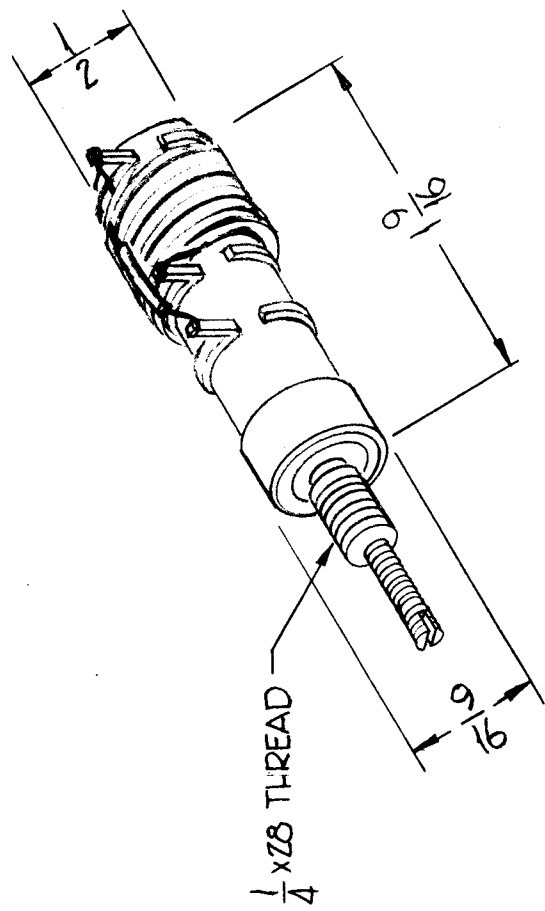
REQ. PER. UNIT	1	USED ON	CL-259 C
MODEL	RFD-1	ASBY. NO.	PAIK, SBT-1K
		DATE	10-31-60

ELECTRICAL SPECIFICATIONS

OPERATING FREQUENCY RANGE 16-ZZ MC.
 L - MINIMUM LESS THAN .50 μ hy \pm 5%
 L - MAXIMUM GREATER THAN .65 μ hy \pm 5%
 Q - GREATER THAN 130
 F - 75 MC

MECHANICAL SPECIFICATIONS

PHENOLIC COIL FORM
 POWDERED IRON TUNING SLUG
 STUD MOUNTED
 5 TURNS
 AWG #18 BUSS WIRE

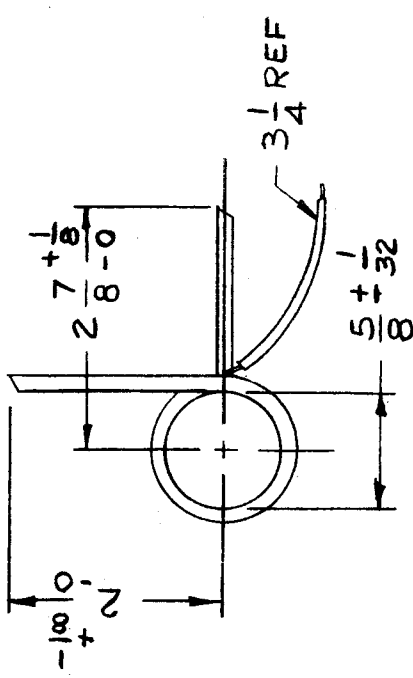
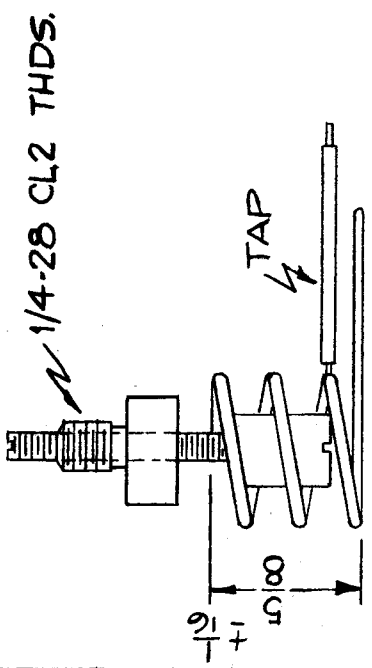


REQ. ITEM	PART NO.	DESCRIPTION	SYMBOL
C		THE TECHNICAL MATERIEL CORP. MAMARONECK, NEW YORK	
B		COIL, RF, TUNED, 16-ZZ MC (L224)	
A			
ISSUE ITEM	CHANGED FROM		
<p>TERM. RINGS RELOCATED 7-5-66 16495 <i>gdy</i></p> <p>.50 μhy \pm 5% WAS .55 μhy 11-21-63 10431 <i>gdy</i></p> <p>.65 μhy \pm 5% WAS .85 μhy 11-23-60 3569 <i>WT</i></p> <p>L-.55, L-.85, Q-130 11-23-60 <i>gdy</i></p> <p>SCALE: A-2005</p> <p>TOLERANCES</p> <p>DEC. DIM. \pm</p> <p>FRAC. DIM. \pm</p> <p>ANGULAR DIM. \pm</p>			
TYPE & TEMPER	HEAT TREAT. SPEC.	CHECKER	ENG. APP.
		<i>gdy</i>	<i>gdy</i>
MATERIAL	FINISH & SPEC. NO.	DRAWN	CHECKED
		<i>gdy</i>	<i>gdy</i>
FINISH & SPEC. NO.		FINAL APPROVAL	
		CL-259 C	

UNIT	MODEL	ASST. NO.	DATE
1	RFD-1	PA-1K, SBT-1K	11-10-60
1	RFD-2		6-11-64

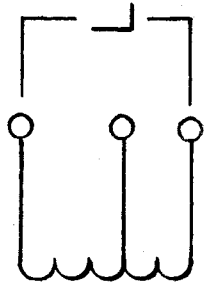
CL-260 D

USED ON MODEL	QUAN. PER UNIT	FUNCTION	OPER. FREQ.	SCHEMATIC SYMBOL	TMC PART NO	CORE COLOR
RFD-1A	1	DRIVER PLATE TANK COIL	22-32MC	L225	CL260-1	RED
RFD-2	1	DRIVER PLATE TANK COIL	19.5-32MC	L225	CL260-2	WHITE



SPECIFICATIONS (W/O CORE)

L = LESS THAN .190 μ hy
 Q (at Test Freq.) = 120
 TEST FREQ. = 25MC



ISSUE ITEM	CHANGED FROM	DATE	CH. NO.	DRAFTS	CHECKER	ENG. APP.	SCALE:	TOLERANCES	DEC. DIM. \pm	FRAC. DIM. \pm	ANGULAR DIM. \pm
D	LESS THAN ADDED TO 'L'	11-10-67	18594	NR.	FRB	FRB	(1A-2006)	MAXIMUM ALLOWABLE TOLERANCES HAVE BEEN DETERMINED AND ANY DEVIATIONS WILL BE CAUSE FOR REJECTION. REMOVE ALL BURRS AND SHARP EDGES			
C	'L' WAS .156 UHY	9-26-64	16903	RME	FRB	FRB					
B	REVISED DIMS.	6/3/66	16328	C.H.	FRB	FRB					
A	TMC PART NO. 8 RFD-2 ADDED TO CHART, ON TITLE BLOCK 22-32MC DELETED	6/11/64	1546	A.M.	@	FRB					
TOLERANCES DEC. DIM. \pm FRAC. DIM. \pm ANGULAR DIM. \pm								TYPE & TEMPER HEAT TREAT. SPEC. DRAWN CHECKED FINISH & SPEC. NO. ELEC. DES. APP. MECH. DES. APP.			
THE TECHNICAL MATERIEL CORP. MAMARONECK, NEW YORK COIL, R.F., TUNED								SYMBOL DESCRIPTION STOCK SIZE MATERIAL PART NO.			

* MEASURED AT 1VOLT, 1KC, ODC

REQ. PER UNIT
1

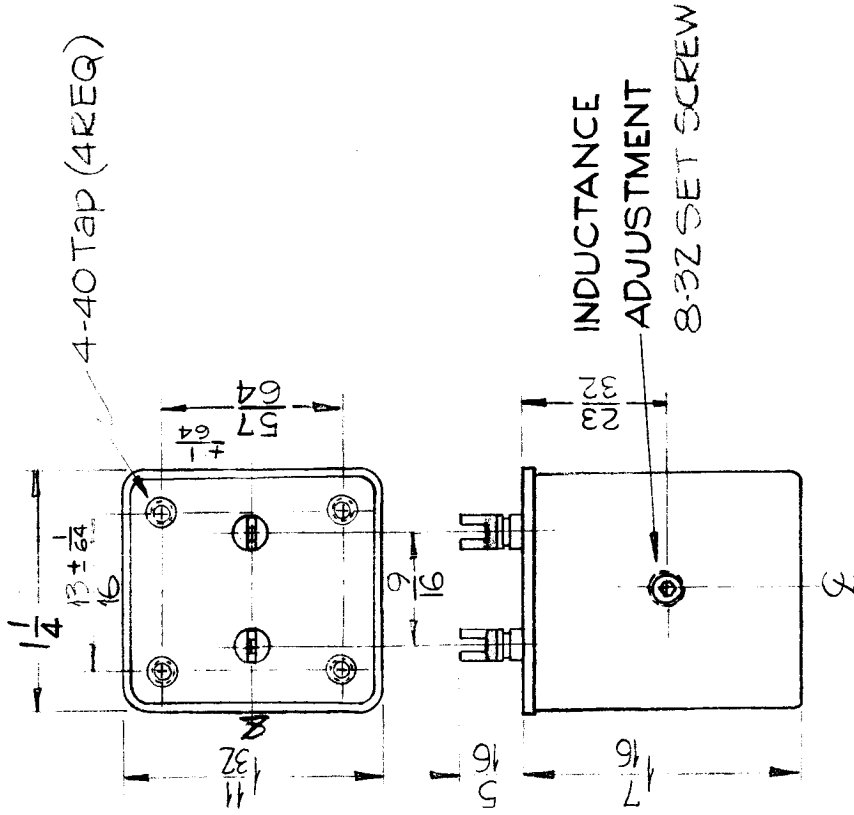
MODEL
TIS-3

CL-761

B

USED ON
DATE
10-25-60

IMC PART N?	MEAN HYS.	DC MA (MAX)
CL-761-1	.541*	15



NOTE ~ INDUCTANCE VALUE MAY BE ADJUSTED FROM -45% TO +85% FROM MEAN VALUE BY ADJUSTING SET SCREW, RANGE IS COVERED IN 600° ROTATION.

CASE - STEEL (DIE CAST)
FINISH - GREY ENAMEL

REWORKING

REQ. ITEM	PART NO.	DESCRIPTION	SYMBOL
B 1	CLERICAL CHANGE 11.4.64	THE TECHNICAL MATERIEL CORP. MAMARONECK, NEW YORK	
A 3	1/32 Tol. Added. Meas. during Note Added	REACTOR VARIABLE	
2	9/16 Dim. Was 19/32; 5/64 Dim. Was 29/32		
1	11/16 Dim Deleted 23/32 Dim. Added		
ISSUE ITEM	CHANGED FROM	MATERIAL	
		TYPE & TEMPER	HEAT TREAT. SPEC.
		DRAWN	CHECKED
		ELEC. DES. APP	MECH. DES. APP
DEC. DIM. ±			FINAL APPROVAL
FRAC. DIM. ± 1/32			CL-761
ANGULAR DIM. ±			B

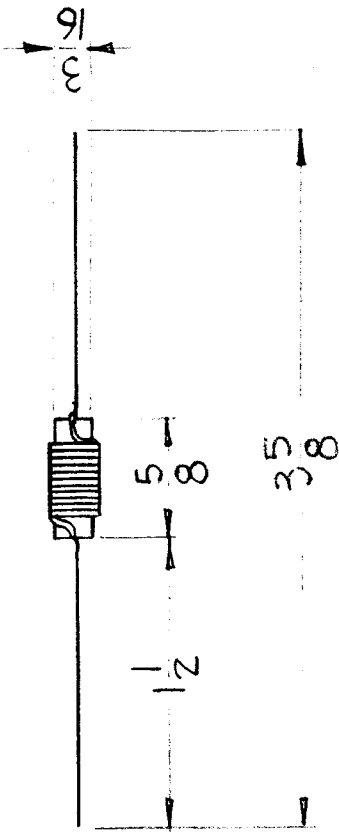
REQ. PER. UNIT	USED ON	CL-262
2	MODEL	
	ASSY. N.	
	R.F. SECT	11-4-60
	DATE	

SPECIFICATIONS

L = 2 why ($\pm 5\%$)

Q = 100 or Greater

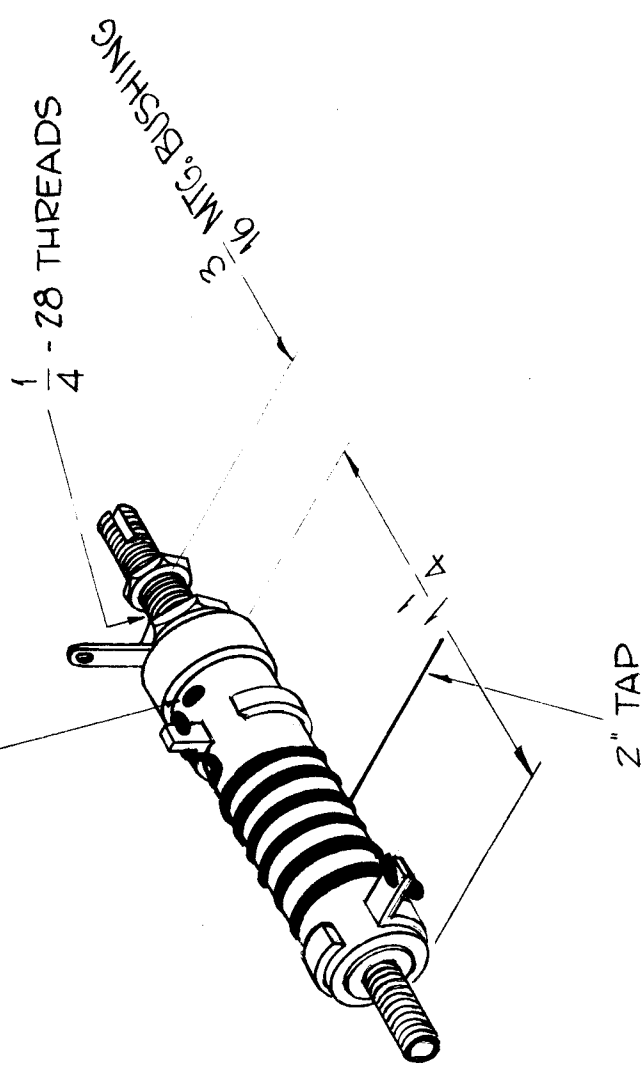
FREQ = 7.9 mcs



REQ. ITEM	REQ. ITEM	PART NO.	DESCRIPTION	SYMBOL
			THE TECHNICAL MATERIEL CORP.	
			MAMARONECK, NEW YORK	
			COIL, RF CHOKE	
ISSUE ITEM	CHANGED FROM		D.R. 2074	
	TOLERANCES		CHECKED	
DEC. DIM. \pm			DRAWN	
FRAC. DIM. \pm				
ANGULAR DIM. \pm				
	DATE	CH. NO.	DRAFTS	CHECKER
				ENG. APP.
	SCALE:	1A-2016		
	MAXIMUM ALLOWABLE TOLERANCES HAVE BEEN DETERMINED AND ANY DEVIATIONS WILL BE CAUSE FOR REJECTION. REMOVE ALL BURRS AND SHARP EDGES			
	TYPE & TEMPER	HEATTREAT. SPEC.	ELEC. DES. APP. MECH. DES. APP.	
			FINISH & SPEC. NO.	
			CL-262	

MODEL	REQ.	FUNCTION	OPER. FREQ.	SYMBOL	REQ. PER UNIT	MODEL	USED ON
CHG-1	1	2 ND R.F. Plate Transformer	15.75 - 33.75 MC	T1109	1	CHG-1	ASSY. NO. DATE
							R.F. SECT. 11-7-60
							CL-264 A

BLUE DOT (COLOR CODE)

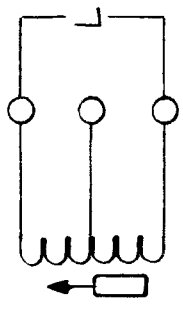


ELECTRICAL SPECIFICATIONS

L - .40 (.39 - .41) Microhenries
Q - 170 or greater
FRFQ. (Test) - 25 Mcs
OPER. FREQ. - 15.75 - 33.75 mc

MECHANICAL SPECIFICATIONS

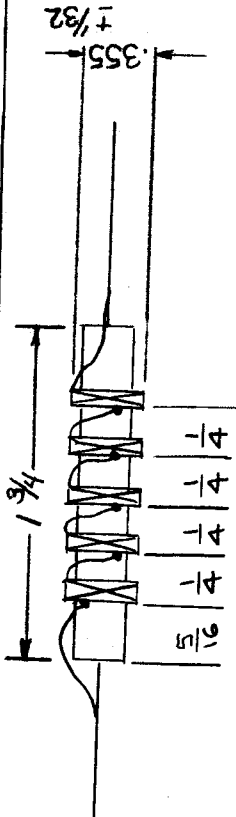
TOTAL TURNS - 6-1/2
TAP - 3 turns
WIRE - No. 16 Buss
TUNING SLUG - Powdered Iron
FORM - Phenolic



REQ. ITEM	REQ. ITEM	PART NO.	DESCRIPTION	SYMBOL
			THE TECHNICAL MATERIEL CORP.	
			MAMARONECK, NEW YORK	
			TRANSFORMER, R.F.	
			15.75 - 33.75 MC (T1109)	
ISSUE ITEM	CHANGED FROM	SCALE:	J.C. Biele	FINAL APPROVAL
A	RELOCATED TERM. RINGS	6/10/66/16370	1/2	
		DATE	NO	
		CH. NO.	NPL	
		DRAFTS	ZA-1519-3	
		CHECKER		
		ENG. APP.		
TOLERANCES				
MAXIMUM ALLOWABLE TOLERANCES HAVE BEEN DETERMINED AND ANY DEVIATIONS WILL BE CAUSE FOR REJECTION. REMOVE ALL BURRS AND SHARP EDGES				
DEC. DIM. ±				
FRAC. DIM. ±				
ANGULAR DIM. ±				
FINISH & SPEC. NO.				
ELEC. DES. APP. MECH. DES. APP.				
CL-264 A				

IF IT IS FOUND DESIRABLE TO CHANGE ANY TOLERANCE OR OTHER DETAIL SPECIFIED ON THIS DRAWING NOTIFY THE PURCHASER PROMPTLY.

MAXIMUM ALLOWABLE TOLERANCES HAVE BEEN DETERMINED AND DEVIATIONS WILL BE CAUSE FOR REJECTION. REMOVE ALL BURRS AND SHARP EDGES



Coil Form- H. L. Crowley Pigtail.
Coil Form #3334. 1/4 Diam. X 1-3/4 Long.
(TMC Part CI-102-1)

WINDING:

- First four pies-40 turns each.) Counter must not .
- Fifth pi -33 turns.) be reset.
- Total number of Turns-193.) Peel turns from last coil to trim to ind. above.

UNIVERSAL WINDING:
Gears (Driver-81
(Cam-86

Cam Width- 1/8
Wire- #34 D.S.C. WI-107-15

NOTES:

- 1. Us spotting cement where necessary.
- 2. Bake coil out for 30 minutes at 100° C.
- 3. Paint coil with insul-X-U-85 and bake 1 hour at 100° C.

ISSUE	ITEM	CHANGED FROM	DATE	CN. NO.	DRAFTS	CHECKER	ENG. APP.
A		REVISED + UPDATED	10/27/60	20051	CU		

TOLERANCES

ALL OTHERS
DEC. DIM. ±
FRAC. DIM. ±
ANGULAR DIM. ±

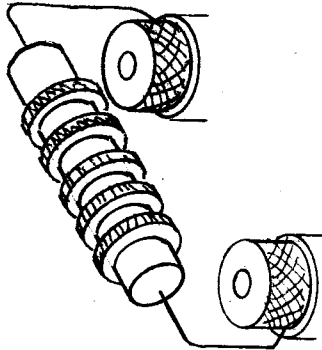
SCALE

DRILL, PUNCH, COMMERCIAL STOCK
SIZES AND MANUFACTURERS
TOLERANCES ARE NOT INCLUDED.

CL265 A

USED ON

QTY	UNIT	MODEL	PROJECT NO.	ASSY. NO.	DATE
2		XFK		A-620	11/10/53
2		TIS-3			11-15-60



NOTE:

Lead length between coil and Q meter terminals shall be 1" and coil shall be elevated directly over terminals.

Inductance must be calibrated against the suppli d standard +1.5µh at 790 Kc.

Q must be greater than 100.

Nominal Inductance: 250µh.

WI107-15 WIRE, D.S.C
CI102-1 FORM. COIL

REQ.	ITEM	PART NO.	DESCRIPTION	SYMBOL
X	2	WI107-15	WIRE, D.S.C.	
1	1	CI102-1	FORM. COIL	

THE TECHNICAL MATERIEL CORP.

MAMARONECK, NEW YORK

200 KC OSC.

Coils LI-L2 Inductor Fixed

DRAWN: *A.J.J.*

ELEC. DES. APP.

CHECKED: *A.J.J.*

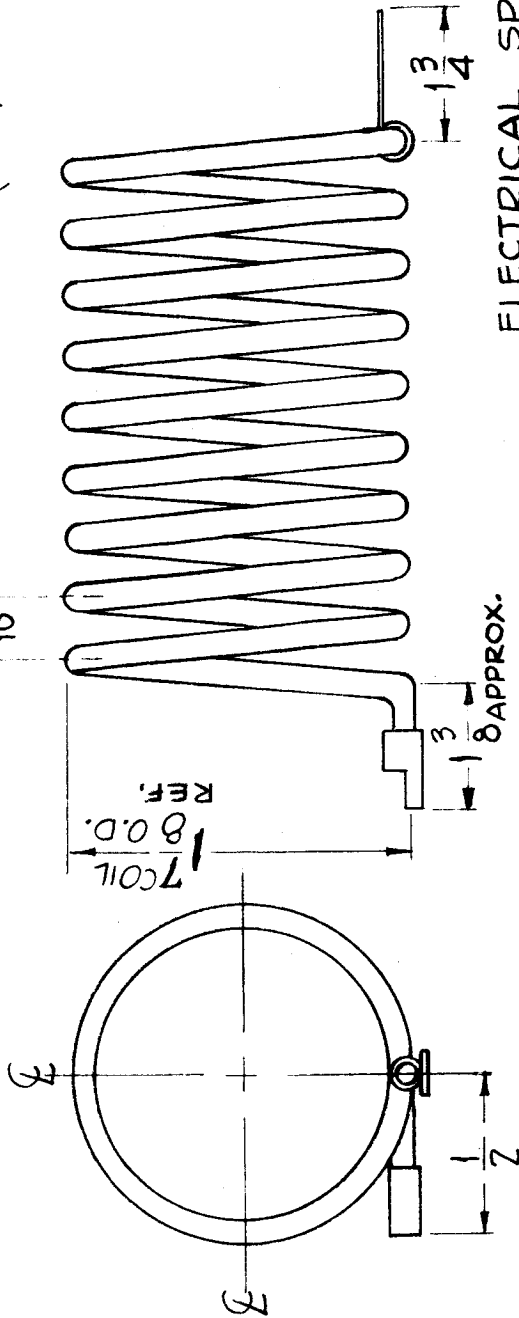
FINAL APPROVAL

MECH. DES. APP.

CL-265 A

REQ. PER UNIT	1	USED ON	CL-268
MODEL	TER-3500-300	ASST. NO.	
		DATE	3-2-61

APPROX. SPACING (TYR)



ELECTRICAL SPECIFICATIONS

2.85 μ h \pm 10%

Q = 350

FREQ = 7.5 Mc

MECHANICAL SPECIFICATIONS

9 TURNS WOUND ON 1/2"

DIA. FORM.

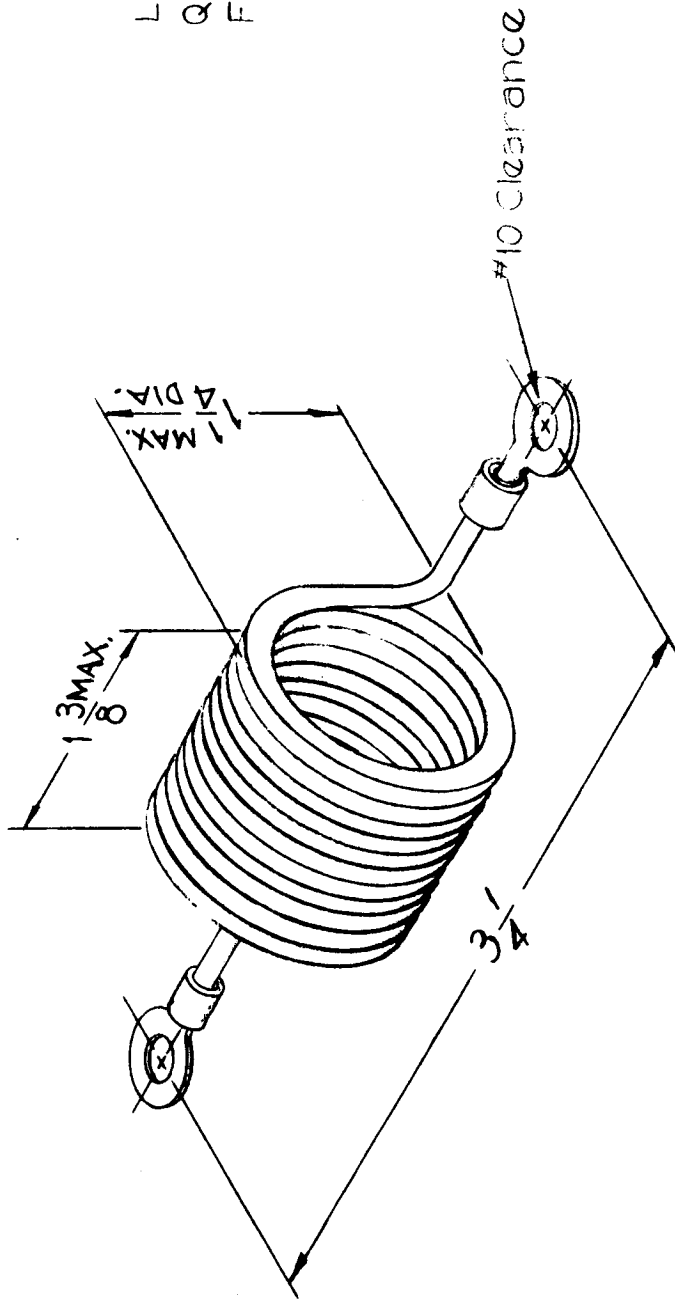
FINISH: SILVER PLATE .0003 THK.

REQ. ITEM	ITEM	PART NO.	DESCRIPTION	SYMBOL		
			THE TECHNICAL MATERIEL CORP. MAMARONECK, NEW YORK			
			COIL, COMPENSATING			
			2.85 μ h			
ISSUE ITEM	CHANGED FROM	DATE	CH. NO.	DRAFTS	CHECKER	ENG. APP.
TOLERANCES						
SCALE: 1A-2055						
MAXIMUM ALLOWABLE TOLERANCES HAVE BEEN DETERMINED AND ANY DEVIATIONS WILL BE CAUSE FOR REJECTION. REMOVE ALL BURRS AND SHARP EDGES						
DEC. DIM. \pm						
FRAC. DIM. \pm						
ANGULAR DIM. \pm						
DRAWN	D.P. Moran					
CHECKED						
ELEC. DES. APP. MECH. DES. APP.			FINAL APPROVAL			
CL-268						

CL-269

REQ. PER UNIT	USED ON
2	ASSTY. NO.
2	DATE
	3-15-61
	3-15-61

L = 2 why ± .1 why
 Q = 200 or Greater
 F = 7.9 MC



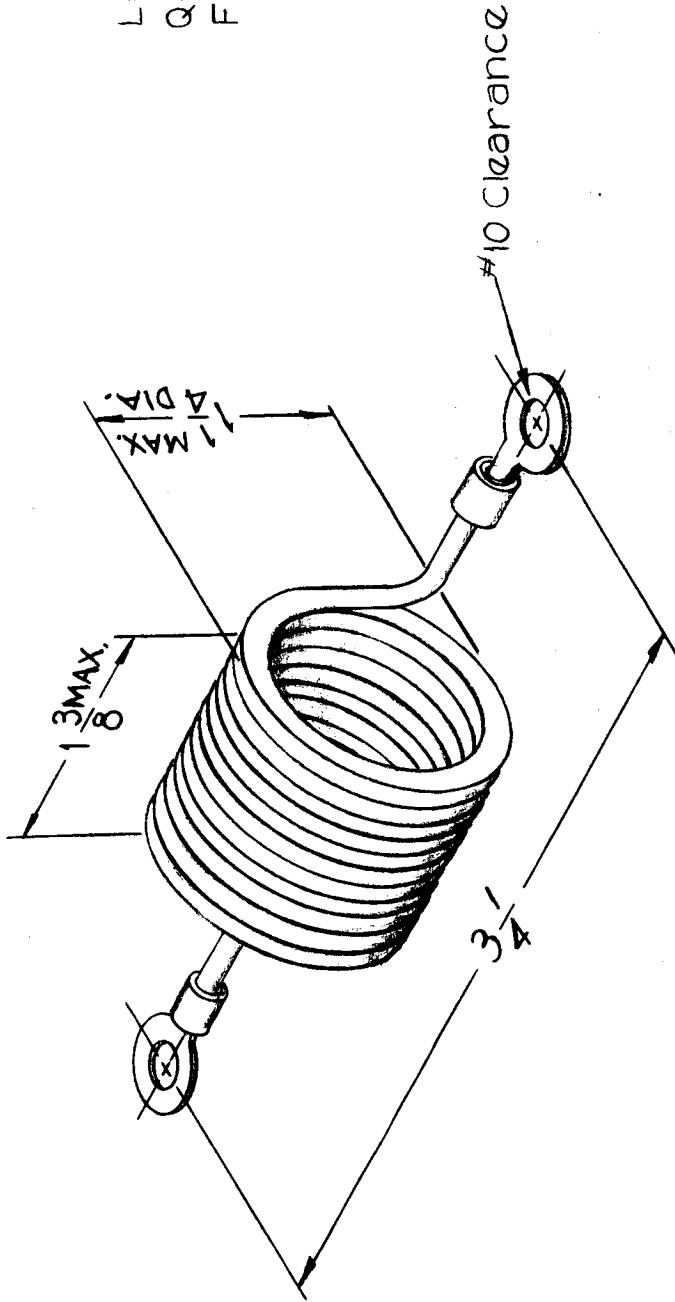
THIS DOCUMENT HAS BEEN PURCHASED BY THE
 GOVERNMENT AND MAY BE REPRODUCED AND USED
 IN CONNECTION WITH ANY GOVERNMENT PROCUR
 MENT OR MAINTENANCE OPERATION. 82679

REQ. ITEM	PART NO.	DESCRIPTION	SYMBOL
		THE TECHNICAL MATERIEL CORP.	
		MAMARONECK, NEW YORK	
		COIL, RADIO FREQ.	
ISSUE ITEM	CHANGED FROM	DRAWN	CHECKED
		<i>D.D. Mason</i>	<i>Car Kkl</i>
		TYPE & TEMPER	HEAT TREAT. SPEC.
		FINISH & SPEC. NO.	ELEC. DES. APP. MECH. DES. APP.
		SCALE: 1A-2076	FINAL APPROVAL
		MAXIMUM ALLOWABLE TOLERANCES HAVE BEEN DETERMINED AND ANY DEVIATIONS WILL BE CAUSE FOR REJECTION. REMOVE ALL BURRS AND SHARP EDGES	CL-269

CL-269

REQ. PER. UNIT	MODEL	USED ON
2	APP-4	ASBY. NO.
2	APP-5	DATE
		3-15-61
		3-15-61

L = 2 why ±.1 why
 Q = 200 or Greater
 F = 7.9 MC



SYMBOL		DESCRIPTION	
		THE TECHNICAL MATERIEL CORP. MAMARONECK, NEW YORK	
		COIL, RADIO FREQ.	
REQ. ITEM	PART NO.	DRAWN	CHECKED
		DR	AK
MATERIAL		FINAL APPROVAL	
		CL-269	
TYPE & TEMPER	HEAT TREAT. SPEC.	ELEC. DES. APP. MECH. DES. APP.	
FINISH & SPEC. NO.			
DATE	CH. NO.	DRAFTS	CHECKER
SCALE:		1A-2076	
MAXIMUM ALLOWABLE TOLERANCES HAVE BEEN DETERMINED AND ANY DEVIATIONS WILL BE CAUSE FOR REJECTION. REMOVE ALL BURRS AND SHARP EDGES			
ISSUE ITEM	CHANGED FROM	TOLERANCES	
DEC. DIM. ±			
FRAC. DIM. ±			
ANGULAR DIM. ±			

THE CONTENTS OF THIS DRAWING ARE THE EXCLUSIVE PROPERTY OF THE TECHNICAL MATERIEL CORP. ITS UNAUTHORIZED USE OR REPRODUCTION IN WHOLE OR IN PART IS STRICTLY FORBIDDEN.

REQ. PER UNIT
1

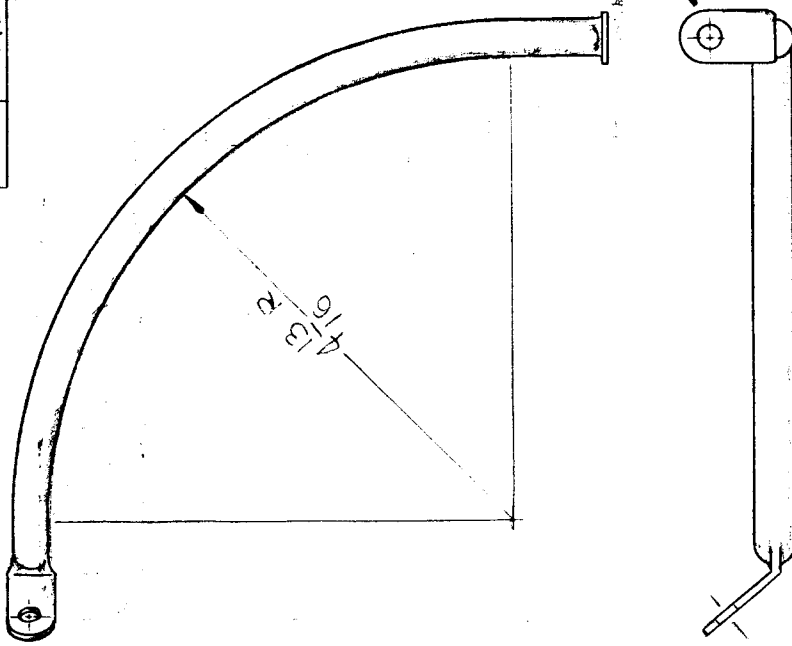
MODEL
GPT-40K

USED ON ASSY. NO.
AS-120

CL-278

DATE	11-22-61
DATE	12-23-63
DATE	12-23-63

NOTES:
 INDUCTANCE - 1.4μH APPROX
 OPER. FREQ. - 24-28 MC
 MATERIAL - 3/8 O.D. COPPER
 FINISH - SILVER PLATE



SYMBOL	DESCRIPTION	PART NO.	REQ. ITEM	STOCK SIZE	MATERIAL	FINISH & SPEC. NO.
	THE TECHNICAL MATERIEL CORP. MAMARONECK, NEW YORK					
	COIL, RF, 24-28 MC					
	J.D.					
	DRAWN					
	CHECKED					
	FINAL APPROVAL					
	CL-278					

DATE	12-21-61	CH. NO.	6066	DRAFTS	J.H.	CHECKER	J.H.	ENG. APP.	ZFP-191
SCALE:	MAXIMUM ALLOWABLE TOLERANCES HAVE BEEN DETERMINED AND ANY DEVIATIONS WILL BE CAUSE FOR REJECTION. REMOVE ALL BURRS AND SHARP EDGES								

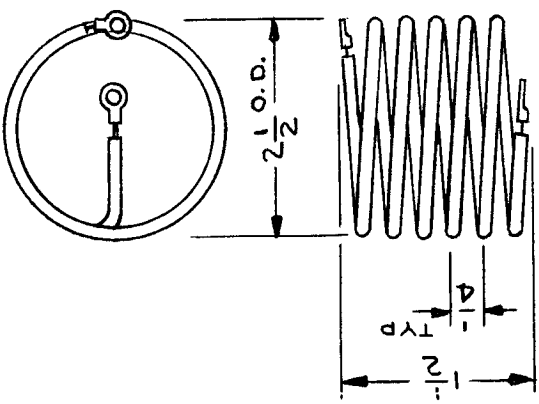
UNLESS OTHERWISE SPECIFIED:
 DIMENSIONS ARE IN INCHES
 TOLERANCES ON
 FRAC. ± 1/64 DEC. ± .005 ANGLES ± 1/2°

REQ. PER UNIT
1

MODEL
TER 250/300J

USED ON
ASSY. NO.
DATE
3/14/66

CL280 \emptyset



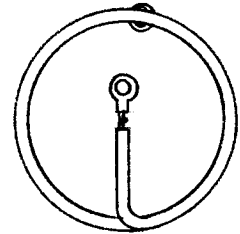
-ELECTRICAL SPECIFICATIONS-

Winding Data
Type- Single Layer
No. of Turns- 5 1/2

Inductance- $1.6 \mu h \pm .1 \mu h @ 7.9 MC$

D.C. Resistance- Not Rated

Current Rating- 8 A



5 1/2 T

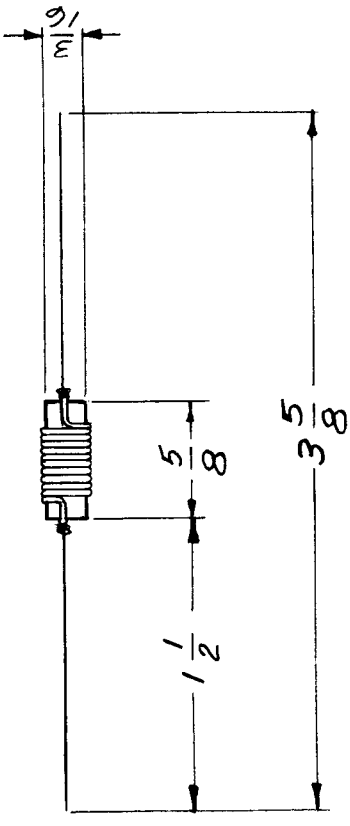
SCHEMATIC

REQ. ITEM	PART NO.	DESCRIPTION	SYMBOL
		THE TECHNICAL MATERIEL CORP. MAMARONECK. NEW YORK	
		COIL, RF, FIXED	
		RESISTOR EQUALIZER	
		JL	
		DRAWN	
		CHECKED	
		DATE	
		3-15-66	
		SCALE	
		1A2238	
		DATE	
		3-15-66	
		CHECKER	
		Jc	
		DRAFTS	
		ENG. APP.	
		FINISH & SPEC. NO.	
		CL280	
		ELEC. DES. APP.	
		MECH. DES. APP.	
		FINAL APPROVAL	
		ML 3 7/15/66	

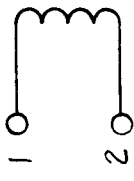
THE CONTENTS OF THIS DRAWING ARE THE EXCLUSIVE PROPERTY OF THE TECHNICAL MATERIEL CORP. ITS UNAUTHORIZED USE OR REPRODUCTION IN WHOLE OR IN PART IS STRICTLY FORBIDDEN.		USED ON		CL-281	
		REQ. PER UNIT	MODEL	ASSY. NO.	DATE
1	AFC-2	H. F. Osc.	12/18/61		

SPECIFICATIONS

L= 17.5 uhy (+ 1%)
 Q= 90 or greater
 FREQ.= 2.5 mcs



SCHEMATIC



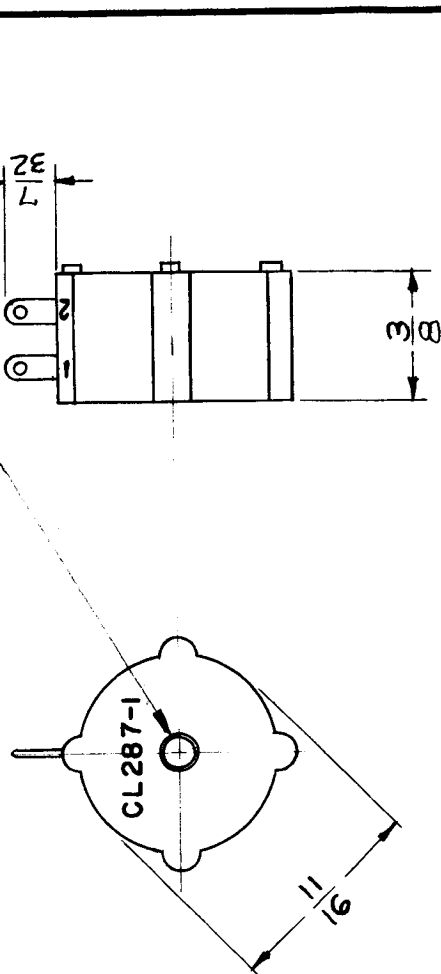
REQ. ITEM	PART NO.	DESCRIPTION	SYMBOL
		THE TECHNICAL MATERIEL CORP. MAMARONECK, NEW YORK	
		COIL, RF TUNED	
		H.F. OSC.	
		W.S.	
		CHECKED	
		DRAWN	
		HEAT TREAT. SPEC.	
		FINISH & SPEC. NO.	
		ELEC. DES. APP.	
		MECH. DES. APP.	
		CL-281	

SCALE: 1 A - 2270
 MAXIMUM ALLOWABLE TOLERANCES HAVE BEEN DETERMINED AND ANY DEVIATIONS WILL BE CAUSE FOR REJECTION.
 REMOVE ALL BURRS AND SHARP EDGES

UNLESS OTHERWISE SPECIFIED:
 DIMENSIONS ARE IN INCHES
 TOLERANCES ON
 FRAC. ± 1/64 DEC. ± .005 ANGLES ± 1/2°

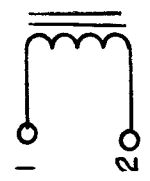
USED ON
 MODEL ASSY. NO. DATE
 HFS-1 8-17-62 CL-287 B

TMC PART NO.	IND.	TEST FREQ.	UNLOADED Q		TEST FREQ.
			MIN.	MAX.	
CL-287-1	14.2 μ h $\pm 5\%$	2.5 MC	160	230	4.25 MC
			170	230	3.25 MC



TMC PART NO. (TO BE STAMPED AS PER CHART).
 LETTERING TO BE 3/32 HIGH GOTHIC.

SCHMATIC DIAGRAM



MECHANICAL SPEC.
 EPOXY FILLED BAKELITE CASE.

REQ. ITEM	PART NO.	DESCRIPTION	SYMBOL
		J. STRUMMER	
		THE TECHNICAL MATERIEL CORP.	
		MAMARONECK, NEW YORK	
		COIL, RF	
		W.S.	
		CHECKED	
		DRAWN	
		FINAL APPROVAL	
		CL-287	B

UNLESS OTHERWISE SPECIFIED:
 DIMENSIONS ARE IN INCHES
 TOLERANCES ON
 FRAC. $\pm 1/64$ DEC. $\pm .03$ ANGLES $\pm 1/2^\circ$

SCALE: 5401-151

MAXIMUM ALLOWABLE TOLERANCES HAVE BEEN DETERMINED AND ANY DEVIATIONS WILL BE CAUSE FOR REJECTION.
 REMOVE ALL BURRS AND SHARP EDGES

THE CONTENTS OF THIS DRAWING ARE THE EXCLUSIVE PROPERTY OF THE TECHNICAL MATERIEL CORP. ITS UNAUTHORIZED USE OR REPRODUCTION IN WHOLE OR IN PART IS STRICTLY FORBIDDEN.

REQ. PART UNIT
2

MODEL
HFA-1

USED ON
ASSY. NO.

DATE
7-26-62

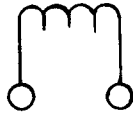
CL-289

B

ELECTRICAL SPECIFICATIONS

L = 342 MH $\pm 2\%$ AT 1KC.
Q = 80 AT 250KC

SCHEMATIC

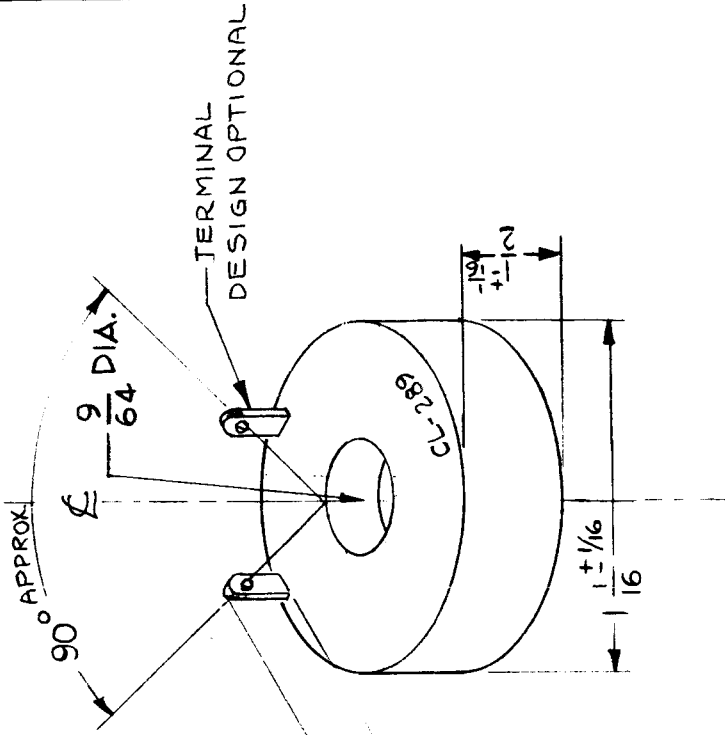


Q = 1 or GREATER AT 1KC
DC RES. = 1.28 Ω APPROX.

CURRENT RATING = 10 MA

MECHANICAL SPECIFICATIONS

TOTAL TURNS - 205 APPROX.
WIRE - AWG# 29



REQ. ITEM	PART NO.	DESCRIPTION	SYMBOL
		THE TECHNICAL MATERIEL CORP. MAMARONECK, NEW YORK	
B		COIL, RF, FIXED, BFO	
A			
SYM			
UNLESS OTHERWISE SPECIFIED:			
DIMENSIONS ARE IN INCHES			
TOLERANCES ON			
FRAC. $\pm 1/64$ DEC. $\pm .005$ ANGLES $\pm 1/20$			
DATE	CH. NO.	DRAFTS	CHECKER
7.14.64	11707	ATB	WLB
12/2/63	10546	WLB	WLB
SCALE:	2 A-2416		
MAXIMUM ALLOWABLE TOLERANCES HAVE BEEN DETERMINED AND ANY DEVIATIONS WILL BE CAUSE FOR REJECTION. REMOVE ALL BURRS AND SHARP EDGES			
TYPE & TEMPER	HEAT TREAT. SPEC.	DRAWN	CHECKED
		WLB	WLB
FINISH & SPEC. NO.		FINAL APPROVAL	
		CL-289	

THE CONTENTS OF THIS DRAWING ARE THE EXCLUSIVE PROPERTY OF THE TECHNICAL MATERIEL CORP. ITS UNAUTHORIZED USE OR REPRODUCTION IN WHOLE OR IN PART IS STRICTLY FORBIDDEN.		REQ. PER UNIT	MODEL	USED ON	DATE	CL 291	C
		2	HFR-1		4-10-62		

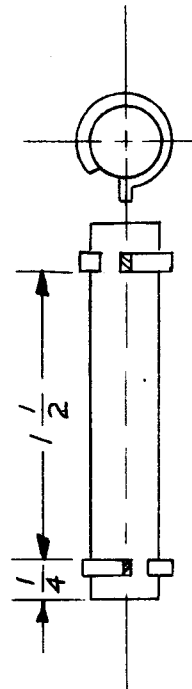
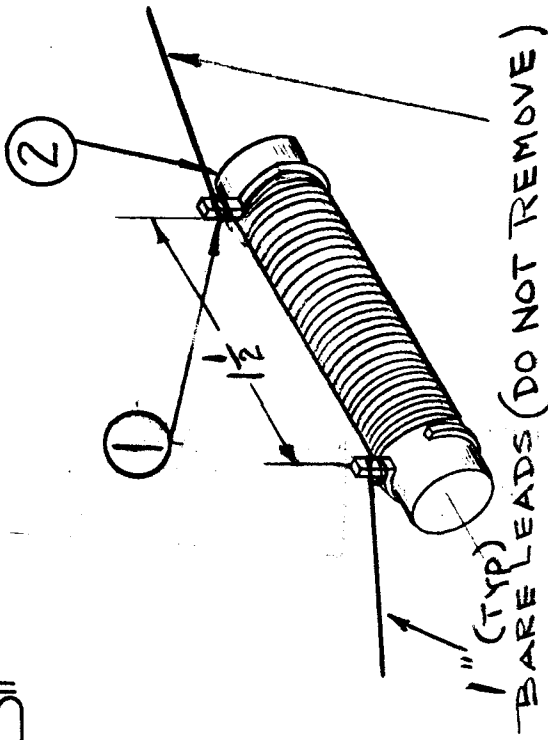
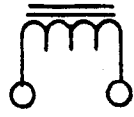
CORE & TERMINAL RING ASSEMBLY:

1. Assemble Terminal Rings (Item 1) to Framic Cor (Item 2), Maintaining 1-1/2" Between Rings, As Shown.
2. Apply GL-104-2 (Item 3) Around Terminal Rings (Item 1)
3. Bake for One-Half Hour at 215°F.

WINDING DATA:

1. Starting Close to Terminal Ring as Shown, Solenoid Wind 53 Turns of WI-123-22 (Item 4) Onto Core Sub-Assembly, Leaving Approximately 1" Bare Lead Lengths. (Do Not Remove.)
2. Stake Leads to Terminal Rings with BS-100 (Item 5).
3. Check Inductance.
4. Saturate Coil Assembly with GL-104-2 (Item 3).
5. Bake for One-Half Hour at 215°F.

SCHEMATIC



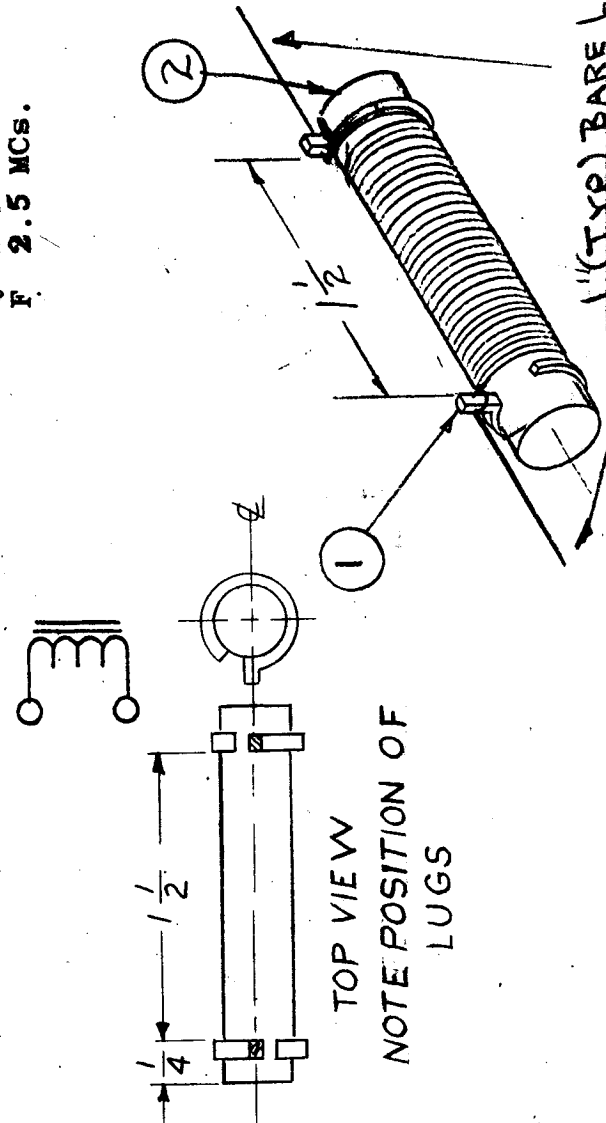
X	5	BS-100	SOLDER, SOFT	SYMBOL
X	4	WI-123-22	WIRE, ELECTRICAL, MAGNET, SZ22	
X	3	GL-104-2	INSULATING VARNISH, ELECTRICAL	
1	2	CI-11291-2R0F	CORE, FINED, ROD	
2	1	TE-153-2	TERMINAL, LUG, RING	

REQ. ITEM	PART NO.	GELLMAN DESCRIPTION	SYMBOL
		THE TECHNICAL MATERIEL CORP.	
		MAMARONECK, NEW YORK	
		CL-291 ASSEMBLY	
		STOCK SIZE	
		MATERIAL	
		TYPE & TEMPER	
		HEAT TREAT. SPEC.	
		DRAWN	CHECKED
		FINISH & SPEC. NO.	FINAL APPROVAL
			CL 291
			C

SYM	DESCRIPTION	DATE	CH. NO.	DRAFTS	CHECKER	ENG. APP.
C	REDRAWN & UPDATED	8/1/64	20215	CV	CV	CCB
UNLESS OTHERWISE SPECIFIED: DIMENSIONS ARE IN INCHES TOLERANCES ON FRAC. ± 1/64 DEC. ± .005 ANGLES ± 1/2°						
MAXIMUM ALLOWABLE TOLERANCES HAVE BEEN DETERMINED AND ANY DEVIATIONS WILL BE CAUSE FOR REJECTION. REMOVE ALL BURRS AND SHARP EDGES						

TEST DATA:
 L 30-40 uh
 Q 40. MIN
 F 2.5 MCs.

SCHEMATIC



TOP VIEW
 NOTE POSITION OF LUGS

CORE AND TERMINAL RING ASSEMBLY:

1. Assemble Terminal Rings (Item 1) to Ferramic Core (Item 2), Maintaining 1-1/2" between Rings As Shown.
2. Apply GL-104-2 Around Terminal Rings (Item 1).
3. Bake for One-Half Hour at 215°F.

WINDING DATA:

1. Starting Close to Terminal Ring as Shown, Solenoid Wind 32 Turns of WI-123-18 (Item 4) onto Core Sub-Assembly Leaving Approximately 1" Bare Lead Lengths (Do Not Remove).
2. Stake Leads to Terminal Rings With BS-100 (Item 5).
3. Check Inductance.
4. Saturate Coil Assembly with GL-104-2 (Item 3).
5. Bake for One-Half Hour at 215°F.

1" (TYP) BARE LEADS
 DO NOT REMOVE

REQ. ITEM	PART NO.	GELLMAN DESCRIPTION	SYMBOL
X 5	BS-100	SOLDER, SOFT	
X 4	WI-123-18	MAGNET WIRE, HEAVY	
X 3	GL-104-2	RESIN, SYNTHETIC	
1	CI112GI-2 R OF	CORE, FERRAMIC	
2	TE-153-2	TERMINAL, RING CLIP	
STOCK SIZE		THE TECHNICAL MATERIEL CORP. MAMARONECK, NEW YORK	
MATERIAL		CL-292 ASSEMBLY	
TYPE & TEMPER		TYPE	
HEAT TREAT. SPEC.		DRAWN	
FINISH & SPEC. NO.		ELEC. DES. APP. MECH. DES. APP.	
DATE		CH. NO.	DRAFTS
DESCRIPTION		2/15/71	20215
UNLESS OTHERWISE SPECIFIED:		CV	CV
DIMENSIONS ARE IN INCHES		MAXIMUM ALLOWABLE TOLERANCES HAVE BEEN DETERMINED AND ANY DEVIATIONS WILL BE CAUSE FOR REJECTION.	
TOLERANCES ON		REMOVE ALL BURRS AND SHARP EDGES	
FRAC. ± 1/64		DEC. ± .005 ANGLES ± 1/2°	
SCALE:		SCALE:	
FINAL APPROVAL		CL 292 B	

THE CONTENTS OF THIS DRAWING ARE THE EXCLUSIVE PROPERTY OF THE TECHNICAL MATERIEL CORP. ITS UNAUTHORIZED USE OR REPRODUCTION IN WHOLE OR IN PART IS STRICTLY FORBIDDEN.

REQ. PER UNIT
3

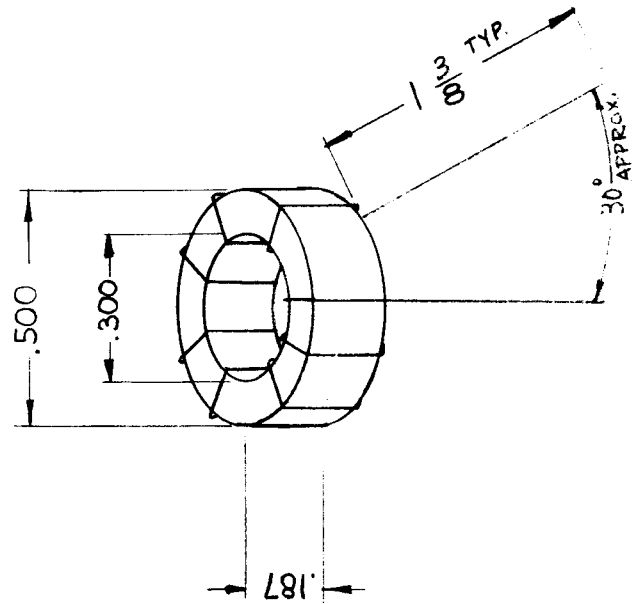
MODEL
HFS-1

USED ON ASSY. NO.
3500

DATE
8-15-62

CL-293
C

ELECTRICAL SPEC. ~
L ~ .47 ± .02 μh
Q ~ 190 OR GREATER
TEST FREQ ~ 25 MC.

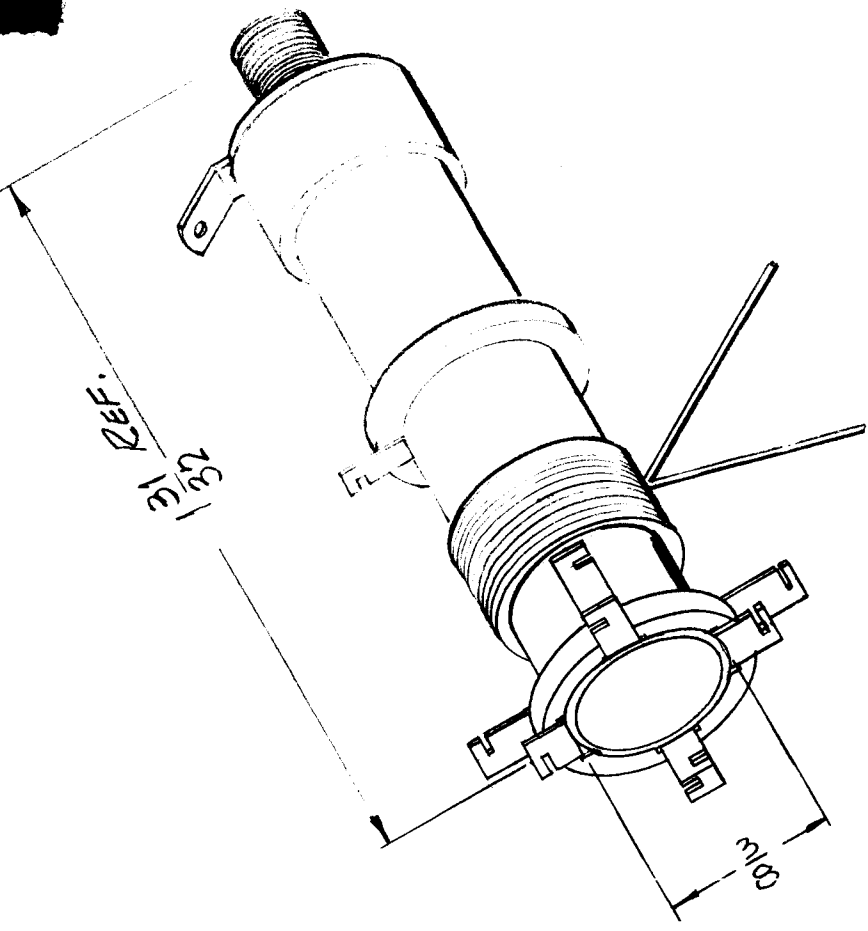


REQ. ITEM	PART NO.	J. STRUMER	DESCRIPTION	SYMBOL
			THE TECHNICAL MATERIEL CORP. MAMARONECK, NEW YORK	
			COIL, RF	
			40.5 MC	
		M. J. F.	CHECKED	FINAL APPROVAL
		JMA	DRAWN	
		JMA	MECH. DES. APP.	CL-293
			MECH. DES. APP.	C
			FINISH & SPEC. NO.	
			TYPE & TEMPER	
			HEAT TREAT. SPEC.	
			CHECKER	
			ENG. APP.	
			DATE	
			CH. NO.	
			DRAFTS	
			WHD	
			9965	
			9965	
			7677	
			DATE	
			CH. NO.	
			DRAFTS	
			CHECKER	
			ENG. APP.	
			SCALE: Do Not Scale (1A-2441)	
			UNLESS OTHERWISE SPECIFIED: DIMENSIONS ARE IN INCHES TOLERANCES ON FRAC. ± 1/64 DEC. ± .005 ANGLES ± 1/2°	
			MAXIMUM ALLOWABLE TOLERANCES HAVE BEEN DETERMINED AND ANY DEVIATIONS WILL BE CAUSE FOR REJECTION. REMOVE ALL BURRS AND SHARP EDGES	
			DESCRIPTION	
			"L" SPEC WAS .30-.40 μh "Q" SPEC WAS 160	
			ON SPECS "L" WAS .45-.65 μh	
			SPECS CLARIFIED	
			WINDING CLARIFIED	

THE CONTENTS OF THIS DRAWING ARE THE EXCLUSIVE PROPERTY OF THE TECHNICAL MATERIEL CORP. ITS UNAUTHORIZED USE OR REPRODUCTION IN WHOLE OR IN PART IS STRICTLY FORBIDDEN.

USED ON
 MODEL HFS-1
 ASSY. NO.
 DATE 8-15-62

CL 295 B



~ SCHEMATIC ~

WINDING

WINDING
 .65 μh ± 10%
 Q MIN = 125 @ 25 MC

MODEL	REQ.	FUNCTION	OPER FREQ.	SYMBOL
HFS	1	IF AMPL SUPPLY TANK	44 MC	

REQ. ITEM	PART NO.	STRAKER	DESCRIPTION	SYMBOL
			THE TECHNICAL MATERIEL CORP. MAMARONECK, NEW YORK	
			COIL, TANK (44 MC IF AMPL)	
B	1 3/8 WAS 1 7/8			
A	TE-170-4 ADDED TO BOTTOM			
SYM	DESCRIPTION	DATE	CH. NO.	DRAFTS
		3-21-66	15985	HLA
		8-26-63	9824	AK
				CHKR
				ENG. APP.
				(2A-2450)
UNLESS OTHERWISE SPECIFIED:				
DIMENSIONS ARE IN INCHES				
TOLERANCES ON				
FRAC. ± 1/64 DEC. ± .005 ANGLES ± 1/20				
SCALE: (2A-2450)				
MAXIMUM ALLOWABLE TOLERANCES HAVE BEEN DETERMINED AND ANY DEVIATIONS WILL BE CAUSE FOR REJECTION. REMOVE ALL BURRS AND SHARP EDGES				
TYPE & TEMPER	HEAT TREAT. SPEC.	DRAWN	CHECKED	FINAL APPROVAL
		JMA	JMA	
FINISH & SPEC. NO.				CL 295 B

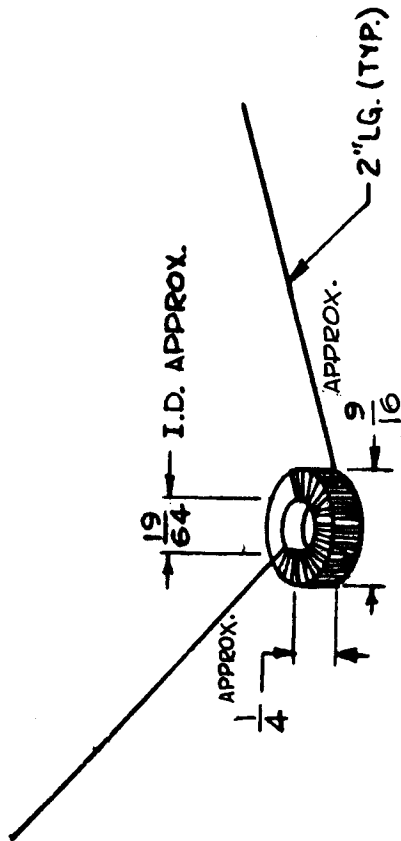
THE CONTENTS OF THIS DRAWING ARE THE EXCLUSIVE PROPERTY OF THE TECHNICAL MATERIEL CORP. ITS UNAUTHORIZED USE OR REPRODUCTION IN WHOLE OR IN PART IS STRICTLY FORBIDDEN.

REQ. PER UNIT
3

MODEL
HFR-1/T

USED ON
ASSY. NO.
A-2485

DATE
6-8-62



SCHEMATIC



MODEL	REQ	FUNCTION	FREQ (MC)	SYMBOL
HFR-1/T	3	BAND - 1 RF STAGE - 2-3-4	2 - 3 MC	L1004, 6, 8

— ELECTRICAL SPECIFICATIONS —
L - 21.2 μh ± 0.5 μh
UNIVERSAL WINDING
CORE - POWDERED IRON

REG. ITEM	PART NO.	ANG. E. E.	DESCRIPTION	SYMBOL		
			THE TECHNICAL MATERIEL CORP. MAMARONECK, NEW YORK			
			COIL, RF, TOROID			
			RUZZO	BP		
			DRAWN	'FINAL APPROVAL		
			V. ANGER 16 ^{1/29} /63	CL-296		
			ELEC. DES. APP. MECH. DES. APP.			
SYM	DESCRIPTION	DATE	CH. NO.	DRAFTS	CHECKER	ENG. APP.
			A-2485			
	UNLESS OTHERWISE SPECIFIED: DIMENSIONS ARE IN INCHES TOLERANCES ON FRAC. ± 1/4 DEC. ± .008 ANGLES ± 1/2°	SCALE: A-2485				
	MAXIMUM ALLOWABLE TOLERANCES HAVE BEEN DETERMINED AND ANY DEVIATIONS WILL BE CAUSE FOR REJECTION. REMOVE ALL BURRS AND SHARP EDGES					

THE CONTENTS OF THIS DRAWING ARE THE EXCLUSIVE PROPERTY OF THE TECHNICAL MATERIEL CORP. ITS UNAUTHORIZED USE OR REPRODUCTION IN WHOLE OR IN PART IS STRICTLY FORBIDDEN.

RTO. PER UNIT 3

MODEL HFR-1/T

USED ON ASS'Y. NO. A-2486

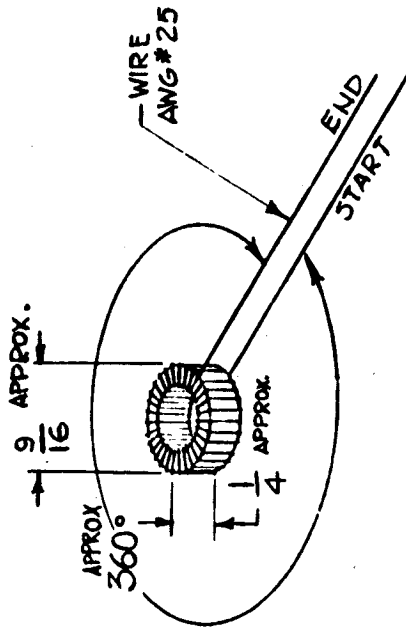
DATE 6-6-62

CL-297

MODEL	REQ	FUNCTION	FREQ.(MC)	SYMBOL
HFR-1/T	3	BAND 2-2,3,4 RF	3 - 4	L1016, L1020 L1018

— ELECTRICAL SPECIFICATIONS—

L = 7.8 μ h \pm 0.15 μ h
Q = 200 MIN. AT 3.5 MC.



BOTH LEADS 2" LONG



— SCHEMATIC —

REQ. ITEM	PART NO.	ANGLER	DESCRIPTION	SYMBOL
			THE TECHNICAL MATERIEL CORP. MAMARONECK. NEW YORK	
			COIL, RF, TOROID	
			BAND 2, 3, 4 RF	
		G.D.L.	TFH	6-3-63
			CHECKED	FINAL APPROVAL
		J. ANGLER	DRAWN	
			ELEC. DES. APP.	MECH. DES. APP.
			FINISH & SPEC. NO.	CL-297

SCALE: 1A - 2486

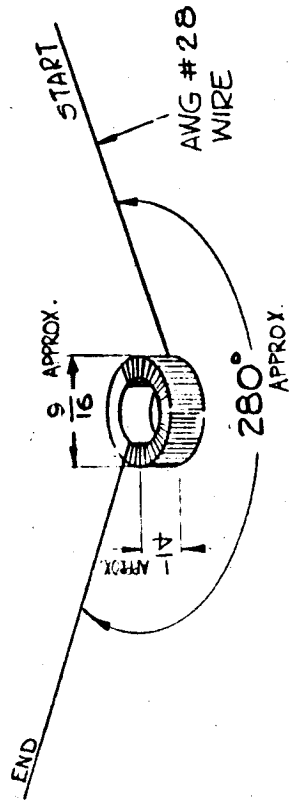
UNLESS OTHERWISE SPECIFIED:
DIMENSIONS ARE IN INCHES
TOLERANCES ON
FRAC. \pm 1/64 DEC. \pm .008 ANGLES \pm 1/2°

THE CONTENTS OF THIS DRAWING ARE THE EXCLUSIVE PROPERTY OF THE TECHNICAL MATERIEL CORP. ITS UNAUTHORIZED USE OR REPRODUCTION IN WHOLE OR IN PART IS STRICTLY FORBIDDEN.


REQ. PER UNIT: 1
 MODEL: HFR-17
 USED ON: ASSY. NO. A-2487 DATE: 6-6-62

CL-298

MODEL	REQ.	FUNCTION	FREQ. (MC)	SYMBOL
HFR-17	1	BAND 1 OSC.	3.75 - 4.75	L1012



~ELECTRICAL SPECIFICATIONS~
 L = 10.65 μ h \pm 0.2 μ h.
 Q = 200 MIN @ 4.25 MC
 C DIST. = 1.3 μ mf (FOR REF.)

START  BOTH LEADS 2" LONG

~SCHEMATIC~

REQ. ITEM	PART NO.	DESCRIPTION	SYMBOL
		THE TECHNICAL MATERIEL CORP. MAMARONECK, NEW YORK	
		COIL RF TOROID	
		BAND 1 OSC.	
		MATERIAL	
		STOCK SIZE	
		HEAT TREAT. SPEC.	
		CHECKS	
		DRAWN	
		FINISH & SPEC. NO.	
		ELEC. DES. APP.	
		MECH. DES. APP.	
		FINAL APPROVAL	
		CL-298	

UNLESS OTHERWISE SPECIFIED:
 DIMENSIONS ARE IN INCHES
 TOLERANCES ON
 FRAC. \pm 1/64 DEC. \pm .005 ANGLES \pm 1/2°

SCALE: 1:1 @ (1A-2487)

MAXIMUM ALLOWABLE TOLERANCES HAVE BEEN DETERMINED AND ANY DEVIATIONS WILL BE CAUSE FOR REJECTION. REMOVE ALL BURRS AND SHARP EDGES

DATE: 6-6-62

CH. NO. 11

DRAFTER

CHECKER

ENG. APP.

THE CONTENTS OF THIS DRAWING ARE THE EXCLUSIVE PROPERTY OF THE TECHNICAL MATERIEL CORP. ITS UNAUTHORIZED USE OR REPRODUCTION IN WHOLE OR IN PART IS STRICTLY FORBIDDEN.

REQ. PER UNIT
1

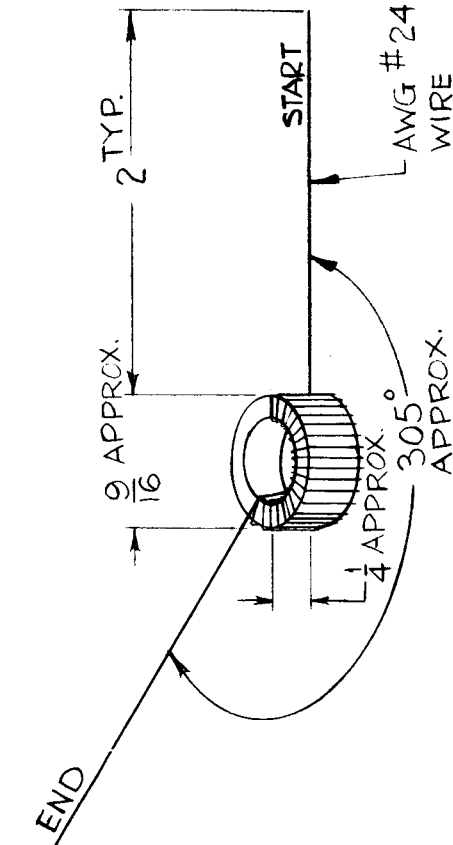
MODEL
HFR-1/T

USED ON
ASSY. NO.

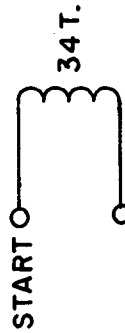
DATE

6-7-62

CL-299



SCHEMATIC



— ELECTRICAL SPECIFICATIONS —

 $L = 4.5 \mu h \pm 0.1 \mu h$
 $Q = 220 \text{ MIN @ } 5.25 \text{ MC}$

MODEL	REQ.	FUNCTION	FREQ.(MC)	SYMBOL
HFR-1/T	1	BAND#2, OSC	4.75 - 5.75	L-1022

REQ. ITEM	PART NO.	DESCRIPTION	SYMBOL
		ANGER	
		THE TECHNICAL MATERIEL CORP. MAMARONECK, NEW YORK	
		COIL, RE, TOROID	
		BAND 2 - OSC	
		V.R.R.	
		DRAWN	
		V. ANGER	
		ELEC. DES. APP.	
		MECH. DES. APP.	
		FINISH & SPEC. NO.	
		HEAT TREAT. SPEC.	
		CHECKER	
		DATE	
		CH. NO.	
		DRAFTS	
		CHECKER	
		ENG. APP.	
		SCALE: 1A-2488	
		UNLESS OTHERWISE SPECIFIED: DIMENSIONS ARE IN INCHES TOLERANCES ON FRAC. $\pm 1/64$ DEC. $\pm .005$ ANGLES $\pm 1/20$	
		MAXIMUM ALLOWABLE TOLERANCES HAVE BEEN DETERMINED AND ANY DEVIATIONS WILL BE CAUSE FOR REJECTION. REMOVE ALL BURRS AND SHARP EDGES	
			FINAL APPROVAL
			CL-299