

CL-213 B

USED ON

ASSY. NO.

AO-101

A 0-102

MODEL

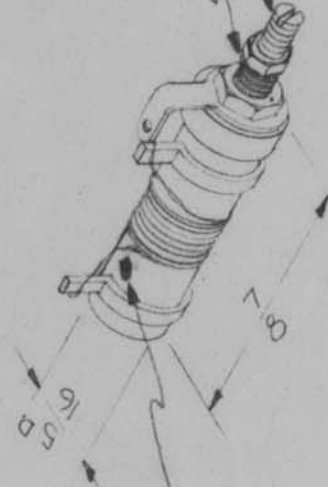
AO-101

REQ. PER UNIT

DATE

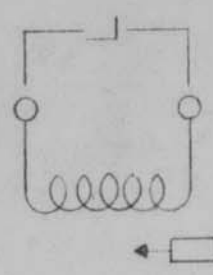
ELECT. SPECS.

Total Ind - .95 - 1.01 why  
Q at test Freq. - 90 or Greater  
Freq. (Test) - 25 mc  
MECH. SPECS.  
Wire - #30 Magnet Wire  
Core - Powdered Iron  
Form - Phenolic



Color Code Dot  
(white)

8-32 threaded Mtg. Bushing x 1/4 Lg.  
3-48 threaded tuning slug.



Hardware Supplied -  
One ea. 3-48 Hex Locking Nut } Brass  
One ea. 8-32 Hex Mtg. Nut } Nickel  
One ea. #8 Internal Lockwasher } Plate

REQ. ITEM	PART NO.	DESCRIPTION	SYMBOL
		THE TECHNICAL MATERIEL CORP. MAMARONECK, NEW YORK	
		COIL, RF, TUNED, 20 MC	
B	Q WAS 100		
A	Q WAS 115		
ISSUE ITEM	CHANGED FROM	DRAWN	CHECKED
		16	16
		FINISH & SPEC. NO.	ELEC. DES. APP. MECH. DES. APP.
			CL-213
			B

SCALE: 2A-1445-10  
MAXIMUM ALLOWABLE TOLERANCES HAVE BEEN DETERMINED AND ANY DEVIATIONS WILL BE CAUSE FOR REJECTION. REMOVE ALL BURRS AND SHARP EDGES