

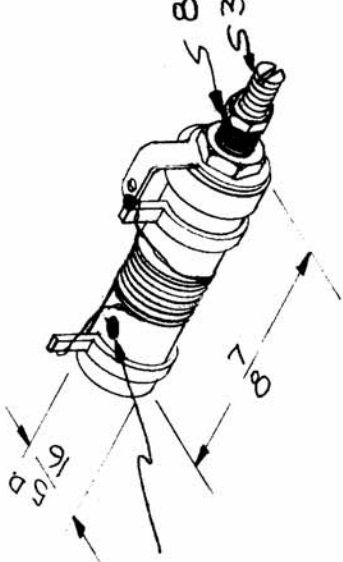
CL-204

REQ. UNIT	1
MODEL	AO-101
ASSY. NO.	A0-102
DATE	

ELECT. SPECS.

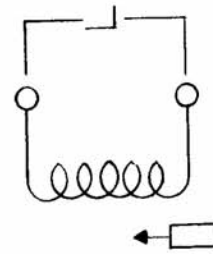
Total Ind - .40 - .45 wh
 Q at test Freq - 90 or Greater
 Freq. (Test) - 25 mc
 MECH. SPECS.

Wire - #30 Magnet Wire
 Core - Powdered Iron
 Form - Phenolic



Color Code Dot
 (Black)

8-32 threaded Mtg. Bushing x 1/4 Lg.
 3-48 threaded tuning slug.



Hardware Supplied -

- One ea. 3-48 Hex Locking Nut } Brass,
- One ea. 8-32 Hex Mtg. Nut } Nickel
- One ea. #8 Internal Lockwasher } Plate

REQ. ITEM	DESCRIPTION	SYMBOL
B	Q WAS 100	THE TECHNICAL MATERIEL CORP. MAMARONECK, NEW YORK
A	Q WAS 115	
ISSUE ITEM	CHANGED FROM	COIL, RF, TUNED, 30 MC
	TOLERANCES	16
	DATE	30 MC
	CH. NO.	16
	DRAFTS	16
	RME	16
	AM.	16
	DATE	16
	SCALE:	16
	NO	16
	NPL	16
	2A-1445-1	16
	CHECKER	16
	ENG. APP.	16
	MAXIMUM ALLOWABLE TOLERANCES HAVE BEEN DETERMINED AND ANY DEVIATIONS WILL BE CAUSE FOR REJECTION. REMOVE ALL BURRS AND SHARP EDGES	16
	TYPE & TEMPER	16
	HEAT TREAT. SPEC.	16
	FINISH & SPEC. NO.	16
	DRAWN	16
	CHECKED	16
	ELEC. DES. APP	16
	MECH. DES. APP	16
	FINAL APPROVAL	16
	CL-204	B