

| | | | | | | | | | |
|---------|---|-----|-----|-------|-----|-------|----------|---------------|-------------|
| 5 | A | B | C | D | E | F | ITEM 1 | ITEM 2 | ITEM 6 |
| CL166 | 5 | 5/8 | 3/8 | 1-1/4 | 3/8 | 1-1/4 | NS3W0440 | SM2520BNI.250 | NTH2520BNI4 |
| CL166-2 | 4 | 1/8 | N/A | N/A | N/A | N/A | NS3W0432 | SCBP2520BNI4 | N/A |

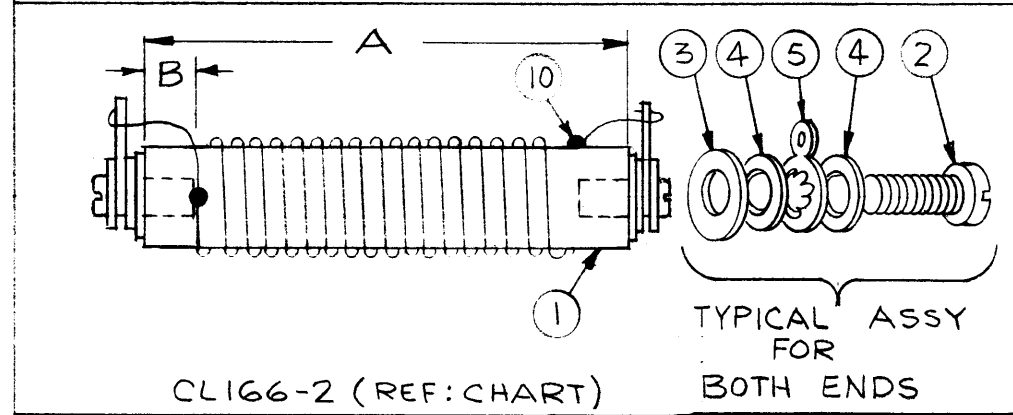
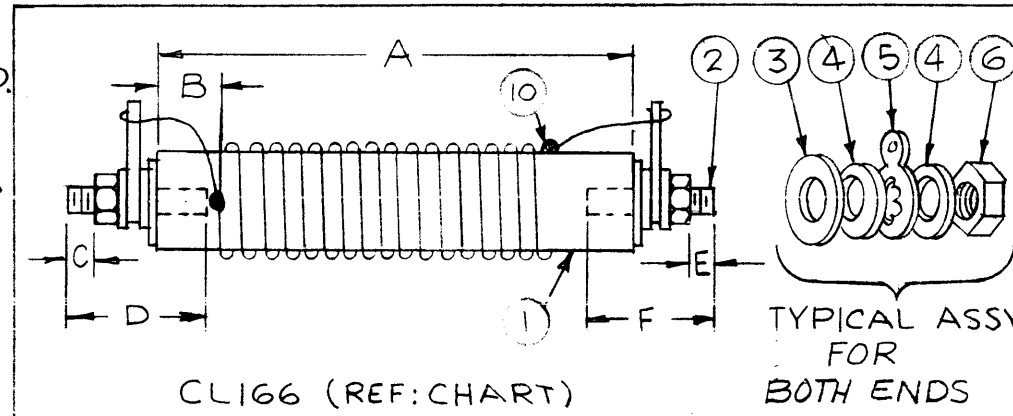
| REVISIONS | | | | | | |
|-----------|-----|--|--------|----------|--------------------|-----------------------|
| ZONE | LTR | DESCRIPTION | DATE | E.M.N.NO | DRAFT | CHKD APPD |
| | A | COMPLETELY REV. & REDRAWN CL166-2 ADDED | 6/4/68 | 18923 | <i>[Signature]</i> | <i>[Signature]</i> FB |

WINDING ~

70 TURNS CLOSE WOUND OF (ITEM 7) WI125-2

FABRICATION ~

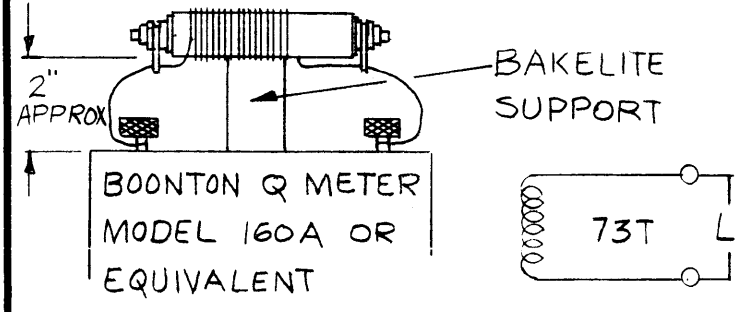
- 1-ASSEMBLE ITEM 2 INTO INSULATOR (ITEM 1)
- 2-ASSEMBLE ITEM 3,4,5,4 IN ORDER, AS SHOWN, AND SECURE TIGHTLY.
- 3-WIND 70 TURNS OF WIRE (ITEM 7) ON INSULATOR (ITEM 1), START "B" FROM END.
- 4-STAKE WIRE TO INSULATOR BODY WITH (ITEM 10) AND SOLDER ENDS TO (ITEM 5).
- 5-COAT WINDING WITH (ITEM 9) INSULEX
- 6-BAKE FOR 1 HR AT 250°F
- 7-ALLOW UNIT TO COOL
- 8-TEST AS SHOWN



| X | 10 | GL125 | CEMENT, EPOXY | |
|-------|------|-------------|------------------------------|------|
| X | 9 | GL104-2 | INSULEX, U-85 | |
| X | 8 | BS100 | SOLDER, SOFT | |
| X | 7 | WI125-2 | WIRE, MAGNET, CEROC "T" | |
| 2 | 6 | SEE CHART | NUT, HEXAGON, DOUBLE CHAMFER | |
| 2 | 5 | TE104-5 | TERMINAL, LOCKING | |
| 4 | 4 | FW25HBN | WASHER, FLAT | |
| 2 | 3 | WA109-55 | WASHER, FIBRE | |
| 2 | 2 | SEE CHART | ROD, THREADED | |
| 1 | 1 | SEE CHART | INSULATOR, PILLAR ROUND | |
| REQ'D | ITEM | PART NUMBER | DESCRIPTION | SYM. |

TEST DATA

L - 35 μ hy \pm 3 μ hy
 Q - 180 OR GREATER
 F - 2.5 mc



| 1 | GPT-10K | ANT. TUNER |
|-------------|---------------|------------|
| QTY / UNIT | MODEL USED ON | ASS'Y NO. |
| APPLICATION | | |
| | CODE | |

NOTICE TO PERSONS RECEIVING THIS DRAWING
 THE TECHNICAL MATERIEL CORPORATION claims proprietary right in the material disclosed hereon. This drawing is issued in confidence for engineering information only and may not be reproduced or used to manufacture anything shown hereon without permission from THE TECHNICAL MATERIEL CORPORATION to the user. This drawing is loaned for mutual assistance and is subject to recall at any time.

| | | | |
|---|--|----------------------------|-----------------|
| UNLESS OTHERWISE SPECIFIED DIMENSIONS ARE IN INCHES AND INCLUDE CHEMICALLY APPLIED OR PLATED FINISHES | | FINAL APPROVAL ARB. | DATE |
| DECIMALS .X \pm .05 .XX \pm .01 .XXX \pm .005 | | MECH. DES. | DATE |
| FRACTIONS 1/64 ANGLES 0° - 30' | | ELECT. DES. J.G. | DATE |
| MATERIAL | | CHECKED J.D.E. | DATE |
| FINISH | | DRAWN J.C.BIELE | DATE 4.28.59 |

| LIST OF MATERIAL | | | |
|---|-----------------|----------|-------|
| THE TECHNICAL MATERIEL CORP. MAMARONECK, NEW YORK | | | |
| STATIC CHOKE, ASSEMBLY | | | |
| SIZE | CODE IDENT. NO. | DWG NO. | ISSUE |
| B | 82679 | CL166 | A |
| SCALE | | SHEET OF | |