

IF IT IS FOUND DESIRABLE TO CHANGE ANY TOLERANCE OR OTHER DETAIL SPECIFIED ON THIS DRAWING NOTIFY THE PURCHASER PROMPTLY.

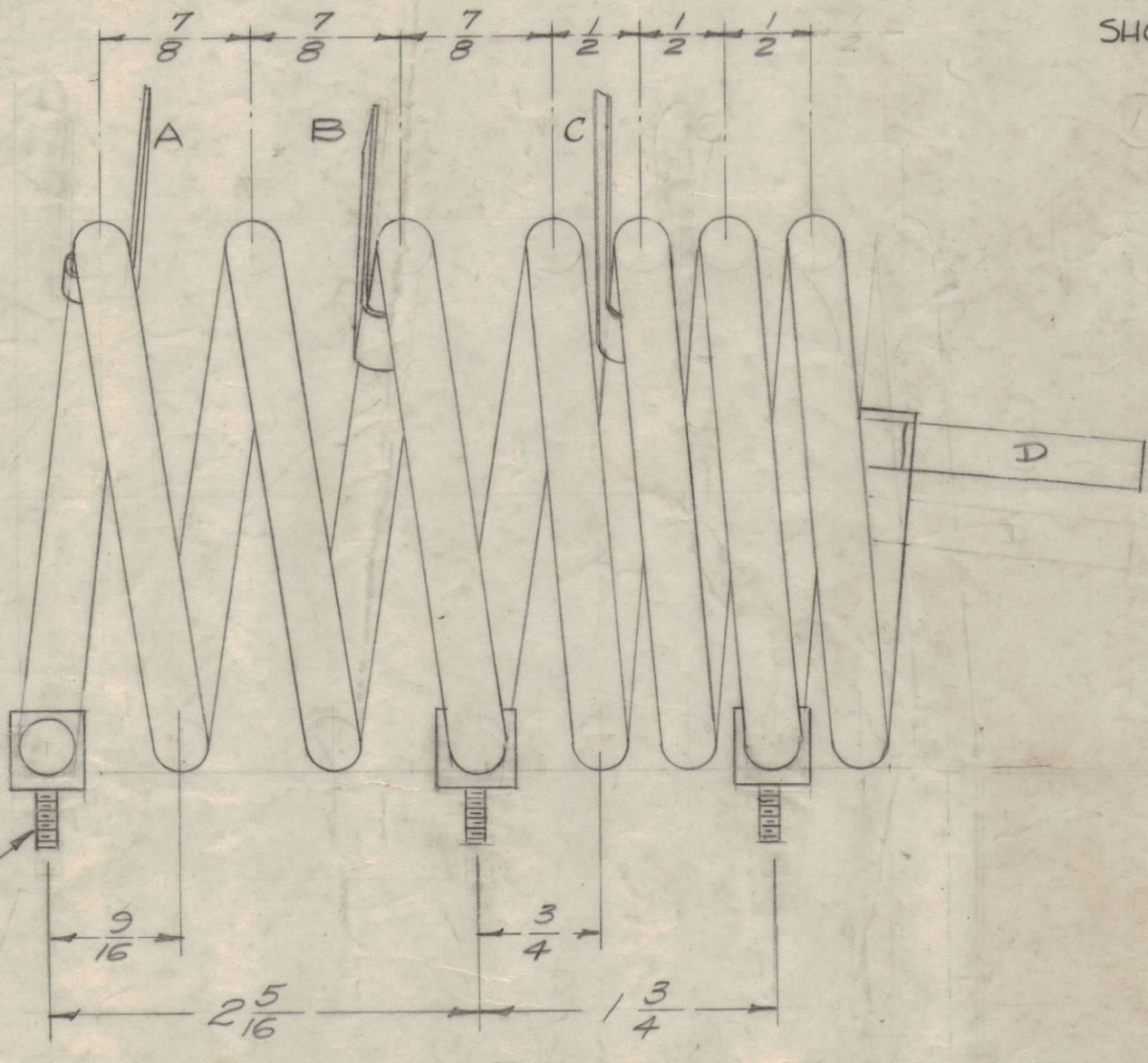
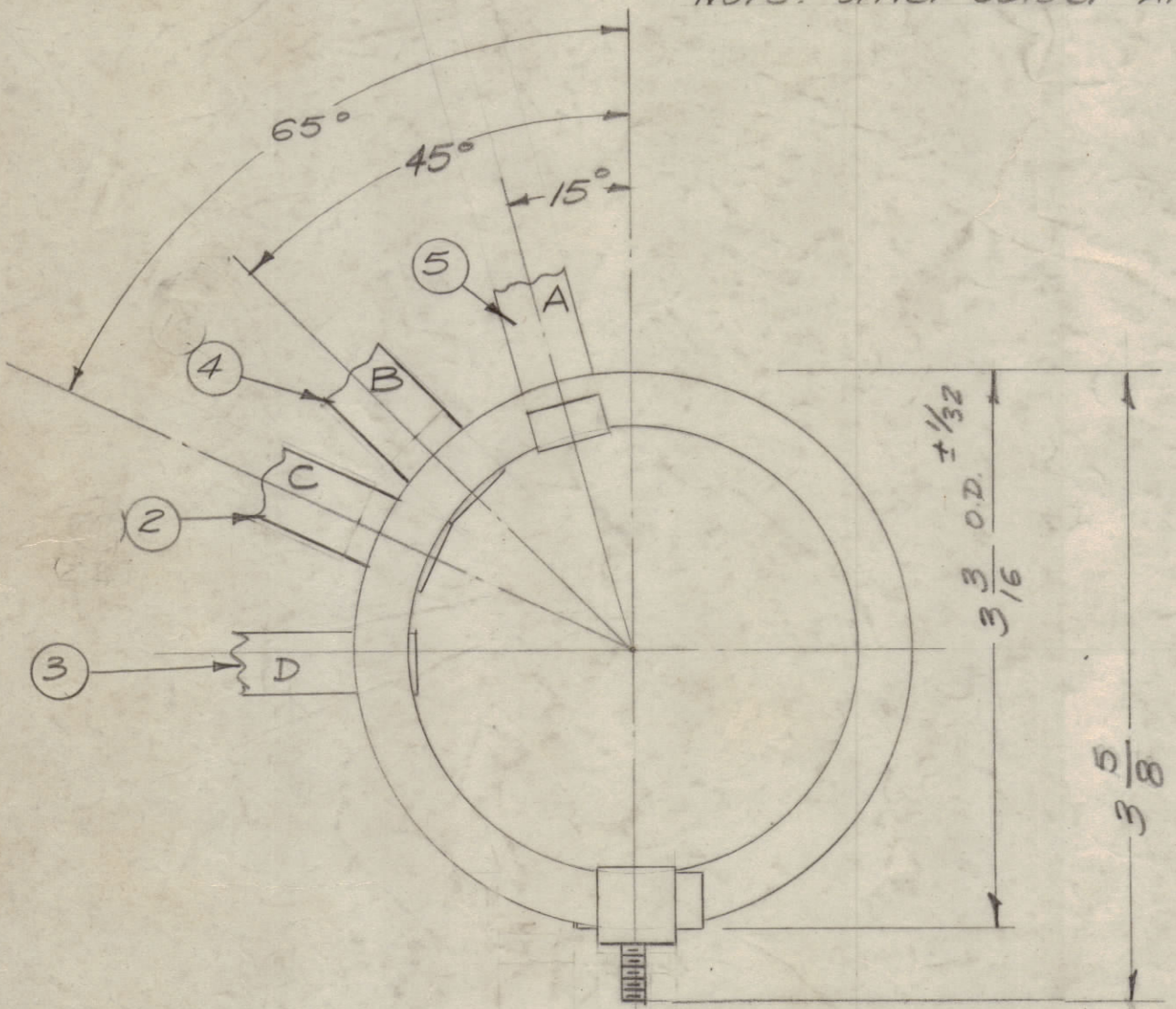
MAXIMUM ALLOWABLE TOLERANCES HAVE BEEN DETERMINED AND DEVIATIONS WILL BE CAUSE FOR REJECTION. REMOVE ALL BURRS AND SHARP EDGES.

NOTICE TO PERSONS RECEIVING THIS DRAWING

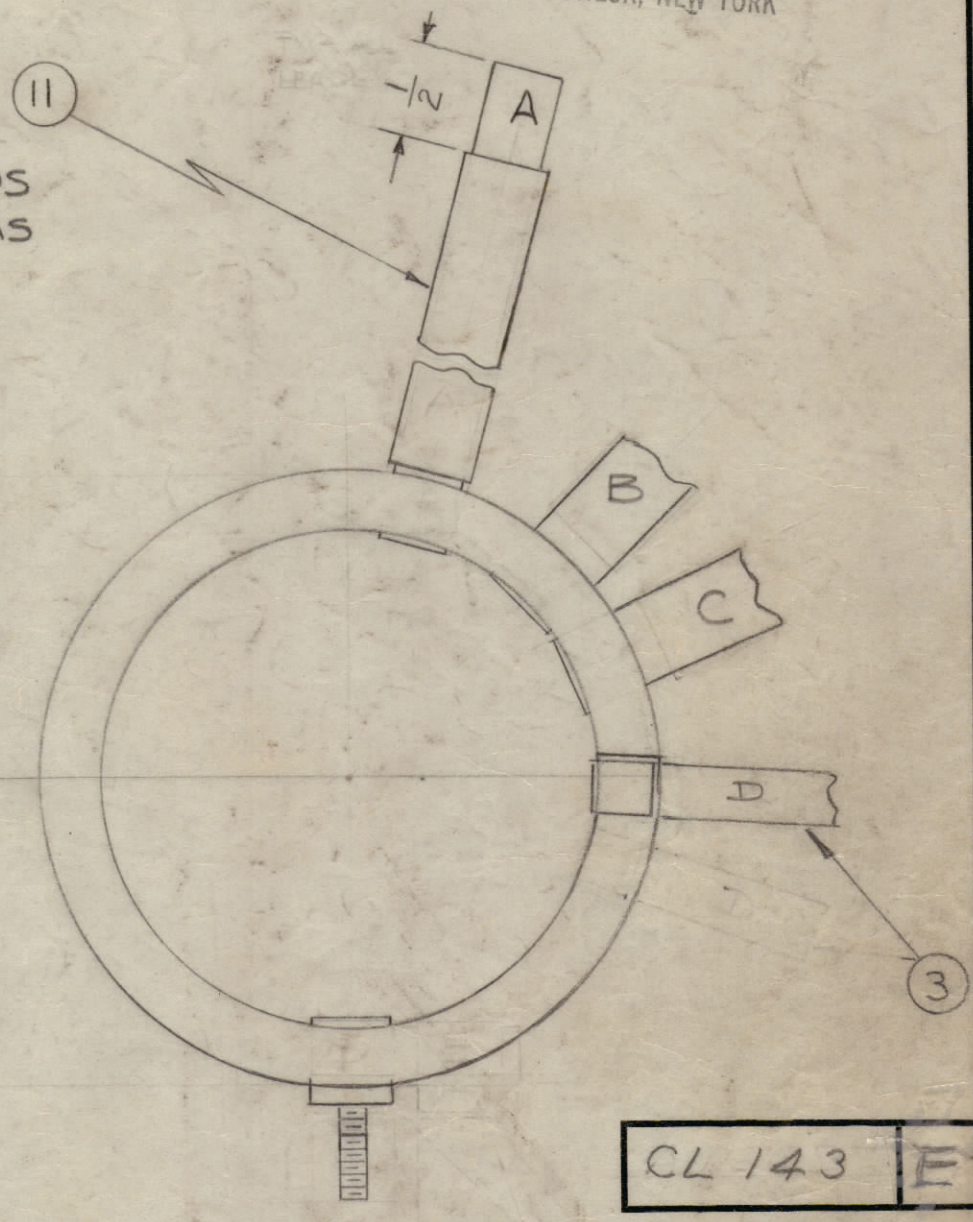
THE TECHNICAL MATERIEL CORPORATION claims proprietary right in the material disclosed hereon. This drawing is issued in confidence and engineering information only and may not be reproduced or used to manufacture anything shown hereon without permission from THE TECHNICAL MATERIEL CORPORATION to the user. This drawing is loaned for mutual assistance and is subject to recall at any time.

Property of:
THE TECHNICAL MATERIEL CORPORATION
MAMARONECK, NEW YORK

Note: Silver Solder All Straps to Tubing



SLEEVING TYP. FOR ALL LEADS CUT 1/2" BACK AS SHOWN



Winding Direction - CW
No. of Turns - 7 1/4

- NOTES:
- ELECTRICAL SPECIFICATIONS:
L = 1.75 ± 0.2 MICRO H_Z
Q = 350 OR GREATER AT TEST FREQUENCY OF 79 MH_Z
 - SAND BLAST PRIOR TO PLATING

20"	11	PX-370-37-7	Insulation, sleeving teflon	
3	10	PM-561	STUD, COIL MOUNTING	
X	9	BS-101-1	Solder, Silver	
	8		DELETED (WAS NTH1032BN10)	
	7		DELETED (WAS SCBS1032BN8)	
	6		DELETED (WAS MS-202-1-1.56)	
1	5	MS-202-1-7.00	Lead, Connecting, 7/16 wide	7"lg
1	4	MS-202-1-6.00	Lead, Connecting, 7/16 wide	6"lg
1	3	MS-202-1-5.00	Lead, Connecting, 7/16 wide	5"lg
1	2	MS-202-1-4.00	Lead, Connecting, 7/16 wide	4"lg
X	1	TU-100-5N	Tubing, Copper (5/16 O.D. x .248 I.D.)	

REQ. ITEM	PART NO.	DESCRIPTION	SYMBOL
THE TECHNICAL MATERIEL CORP. MAMARONECK, NEW YORK			
STOCK SIZE		IPA H.F. TANK COIL ASS'Y.	
MATERIAL	WEIGHT PER PC.	12-28 MC	
TYPE & TEMPER		16/12/18/58	
HEAT TREAT. SPEC.		CHECKED	FINAL APPROVAL
FINISH & SPEC. NO.		5245 Silver Plate .0005	

E	REVISED & REDRAWN	2-24-71	20220	R7	W	PSA	
ISSUE	ITEM	CHANGED FROM	DATE	CH. NO.	DRAFTS	CHECKER	ENG. APP.
TOLERANCES		SCALE: 1" = 1"					
ALL OTHERS	DEC. DIM. ±	DRILL, PUNCH, COMMERCIAL STOCK SIZES AND MANUFACTURERS TOLERANCES ARE NOT INCLUDED.					
	FRAC. DIM. ±	V64					
	ANGULAR DIM. ±						

1	GPT10000	AFC-1		12/18/58
REQ. PER UNIT	MODEL	PROJECT NO.	ASSY. NO.	DATE
USED ON				

CL 143 E

CL

CL 143 E