

CL-132

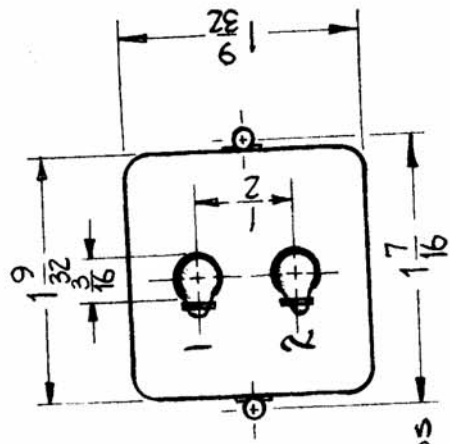
USED ON
ASBY. NO. DATE
6-9-60

MODEL
A-1504

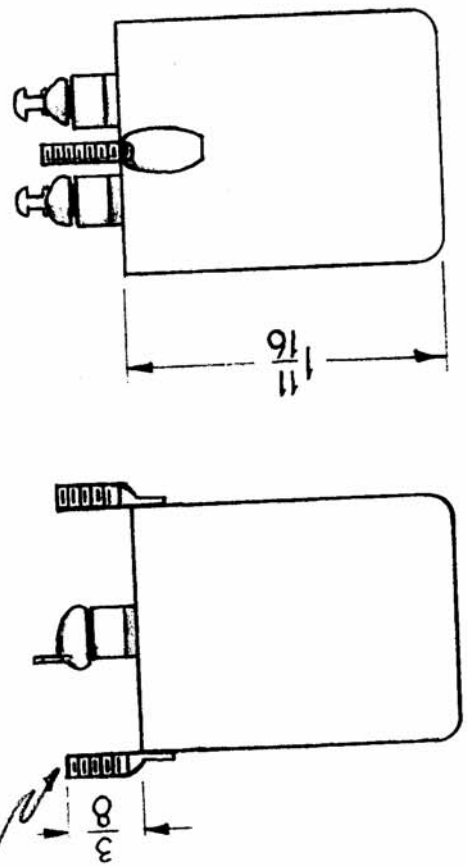
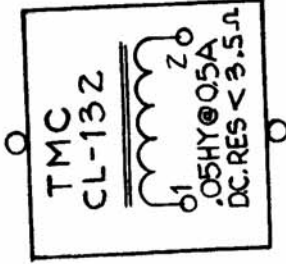
ISSUE
PART
UNIT
1

ELECTRICAL SPECIFICATIONS

INDUCTANCE - .05 HY
 D.C. CURRENT - 0.5 A
 D.C. RESISTANCE - Less than 3.5 ohms
 INSULATION - Winding insulated for 1000 V.



STAMPING DETAIL



6-32 STUDS

ISSUE ITEM	CHANGED FROM	DATE	CH. NO	DRAFTS	CHECKER	ENG. APP.	REQ. ITEM	PART NO.	DESCRIPTION	SYMBOL
A	2 ON STAMPING 3.5Ω WAS 3Ω	5-8-61	4838	W/4	W/4	W/4			THE TECHNICAL MATERIEL CORP. MAMARONECK, NEW YORK	
	1 ON ELEC. SPEC 3.5Ω WAS 3Ω								REACTOR, FILTER	
TOLERANCES										
SCALE:										
MAXIMUM ALLOWABLE TOLERANCES HAVE BEEN DETERMINED AND ANY DEVIATIONS WILL BE CAUSE FOR REJECTION. REMOVE ALL BURRS AND SHARP EDGES										
DRAWN										
CHECKED										
FINAL APPROVAL										
ELEC. DES. APP. MECH. DES. APP.										
FINISH & SPEC. NO.										
DEC. DIM. ±										
FRAC. DIM. ±										
ANGULAR DIM. ±										

CL-132

A